



# GOOSENECK HITCHES

## TESTING THE LIMITS

CURT gooseneck hitches are engineered and tested to keep up with your hardworking customers. New for 2018, we have added an OEM-style hitch made specifically for Ford Super Duty trucks. This hitch features a one-person install, a limited lifetime warranty and is made in the USA. We also continue to offer OEM puck system kits for Ford, GM, Nissan and Ram, and our easy-to-install, easy-to-operate Double Lock EZr™. See page 274 for a helpful hitch selection guide.

# FEATURED PRODUCTS



## OEM puck system kits

Equip your customers to tow gooseneck trailers instantly with an OEM puck system kit, available for Ford, GM, Nissan and Ram.



## OEM-style hitches

With a custom-fit design, OEM-style hitches are fast and easy to install on your customer's truck. They are available for Ford and Ram.



## Double Lock EZr™

Boasting a one-person, no-measure install and easy operation, the EZr™ is the gooseneck hitch of choice for both you and your customers.

# PRODUCT INDEX

**A B C**



**276**  
OEM Puck System Kits



**278**  
Double Lock EZr™ Hitches



**280**  
OEM-Style Hitches



**281**  
X5 Gooseneck Adapter Plates



**282**  
Original Double Lock Hitches



**286**  
Quick Goose II Hitches



**288**  
Over-Bed Hitches



**290**  
5th Wheel Rail Hitches



**291**  
Gooseneck Electrical



# SELECTING A GOOSENECK HITCH

There are three basic methods for installing a gooseneck hitch in your customer's pickup truck:



**A** Using an OEM puck system, if equipped



**B** Using brackets and a gooseneck head



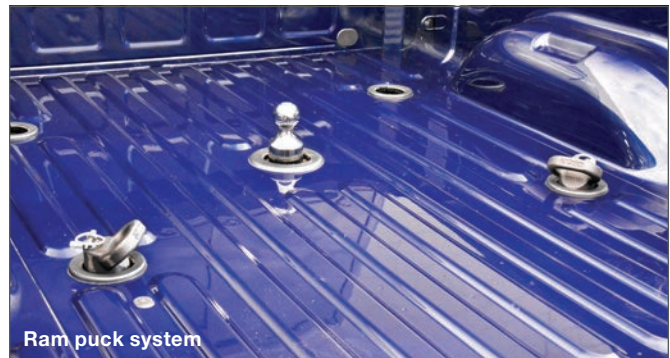
**C** Using pre-existing 5th wheel base rails

## **A** | INSTALLING WITH AN OEM PUCK SYSTEM

Many pickups today, specifically models from Ford, GM, Nissan and Ram, are factory equipped with a truck bed puck system. A puck system provides attachment points for both gooseneck and 5th wheel towing.

For trucks with a puck system, an OEM puck system gooseneck kit is the easiest way to tow a gooseneck trailer. The components can be installed or removed quickly when necessary.

See page 276 to select one of these kits.



Ram puck system

### Quarter-turn anchoring system



**Step 1** - Lift and twist latch to release the retention balls



**Step 2** - Drop the ball into OEM puck system hole



**Step 3** - Return latch to lock the ball in place for towing



Large safety chain openings accept heavy-duty hooks

## B | INSTALLING WITH CUSTOM BRACKETS

For trucks without a puck system, the traditional method for installing a gooseneck hitch is vehicle-specific brackets. The brackets bolt onto the frame of the truck to permanently mount the gooseneck hitch.

For the easiest installation available, we recommend our Double Lock EZr™. This hitch is uniquely designed for one-person installation, with no measuring required. It also has a flip-and-store trailer ball to not obstruct the truck bed.

To learn more about the Double Lock EZr™ and its one-person installation, see page 278.

The Double Lock EZr™ is not available for certain Ram and Ford trucks.

Refer to the table on page 280 for our available OEM-style gooseneck hitches.

CURT also offers a variety of other gooseneck hitches, such as our original Double Lock and Quick Goose II, providing coverage for a wide range of vehicles, including many older trucks.

See the rest of our gooseneck line, starting on page 282.

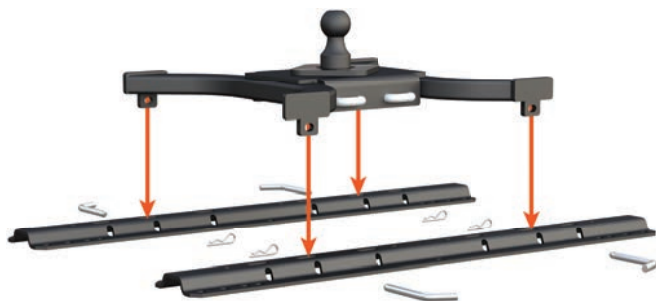


## C | INSTALLING WITH EXISTING 5TH WHEEL BASE RAILS

For trucks with 5th wheel rails already installed, CURT offers 5th wheel rail gooseneck hitches. These 5th-wheel-to-gooseneck adapters feature a four-point mounting system to easily drop into any set of industry-standard 5th wheel base rails.

A 5th wheel rail gooseneck hitch provides a ball ready for towing a gooseneck trailer, and the hitch can easily be removed from the base rails whenever necessary to allow for 5th wheel towing.

See page 290 to select a 5th wheel rail gooseneck hitch.



# USING AN OEM PUCK SYSTEM

30k

GTW

## OEM PUCK SYSTEM GOOSENECK KITS

These kits utilize the truck bed puck system built into certain models of Ford, GM, Nissan and Ram pickups. The ball and anchors easily drop into the pucks, lock into place and are immediately ready to couple to a gooseneck trailer.

See page 274 for a helpful gooseneck hitch selection guide.

### Each kit includes:

- Gooseneck ball
- Two safety chain anchors
- Rubber hole cover
- Durable storage case



60692

### Quarter-turn anchoring system



**Step 1** - Lift and twist latch to release the retention balls



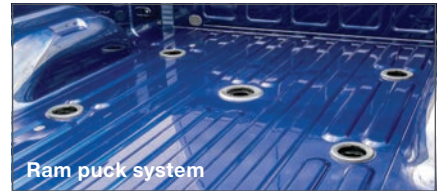
**Step 2** - Drop the ball into OEM puck system hole



**Step 3** - Return latch to lock the ball in place for towing



Large safety chain openings accept heavy-duty hooks



Installation of these products requires an OEM truck bed puck system (example above)

## Product Details

### Gooseneck ball

- Up to 30,000 lbs. GTW and 7,500 lbs. vertical load
- Weight ratings are limited to vehicle manufacturer's stated capacities
- Installs easily with quarter-turn latch locking system
- 2 5/16" ball couples to most gooseneck trailers
- Retention balls keep shank fully locked into the hitch
- Constructed from strong, machine-forged steel alloy
- Protected by a polished chrome-plated mirror finish
- Tested for safety to U.S. VESC V-19 specifications
- Patent# 8,955,866
- Limited lifetime warranty

### Safety chain anchors

- Provides a reliable connection for gooseneck trailer safety chains
- Simple, drop-in install eliminates the need for tools
- Wide openings accept large safety chain hooks
- Constructed from heavy-duty, forged steel
- Durable carbide black powder coat finish
- Patent pending
- Limited lifetime warranty



**30k**  
GTW

# OEM PUCK SYSTEM GOOSENECK KITS



OEM puck system gooseneck components are easy to install whenever needed

Pkg#	Make	Ball GTW / Vertical Load	Ball Size	Ball Finish	Anchor Finish
60618	Ram	30,000 / 7,500 lbs.	2 5/16"	Chrome-plated	Carbide
60692	Chevrolet / GMC, Ford and Nissan	30,000 / 7,500 lbs.	2 5/16"	Chrome-plated	Carbide

## OEM PUCK SYSTEM GOOSENECK KIT REPLACEMENT PARTS



Part#	Make	Ball Size	Description	Finish
60617	Ram	--	Two safety chain anchors	Carbide
60691	Chevrolet / GMC, Ford and Nissan	--	Two safety chain anchors	Carbide
60601	Ram	2 5/16"	OEM-style gooseneck ball	Chrome-plated
60629	Chevrolet / GMC, Ford and Nissan	2 5/16"	OEM-style gooseneck ball	Chrome-plated
66155	--	--	Replacement rubber hole cover	Black rubber



# USING CUSTOM BRACKETS

30K  
GTW

## DOUBLE LOCK EZr™ GOOSENECK HITCH SYSTEM

Scan to see our  
features video or visit  
our YouTube channel



60611

## What makes the EZr™ different?

### One-person installation



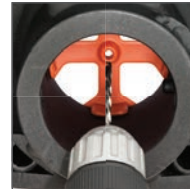
Easy-to-install clips eliminate the need for a second person to hold up the center section

- Retainer clips secure the bolts supporting the center section while attaching the installation kit
- Uses carriage bolts when possible for one-wrench tightening
- No need to lower exhaust on Ford, GM and most Dodge / Ram models
- No need to relocate cable hanger and ground wire on Dodge / Ram models

### No measuring required



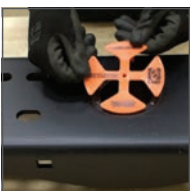
Exclusive Center Locator saves time



Simply drill up from under the bed

- Exclusive Center Locator eliminates the need to measure where the ball hole should be
- Safety chain loop holes are drilled from the underside of the truck bed
- No welding or truck bed removal required
- Center Locator covered by patent# D685,299 S

## How is the EZr™ installed without measuring?



**Step 1** - Place the Center Locator into the gooseneck hitch ball hole



**Step 2** - Bolt the installation brackets and hitch to the vehicle frame



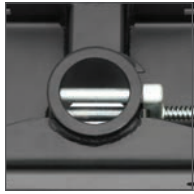
**Step 3** - Drill a pilot hole up from under the bed, using the Center Locator



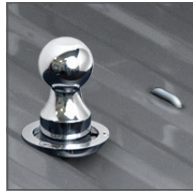
**Step 4** - Use the pilot hole to drill down with no measuring required

## Product Details & Operation

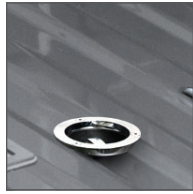
- Up to 30,000 lbs. GTW and 7,500 lbs. vertical load
- Weight ratings are limited to vehicle manufacturer's stated capacities
- Includes 2 5/16" ball, 5/8" safety chain loops and grade 8 hardware
- Protected by a durable carbide powder coat finish
- Tested for safety in accordance with SAE J2638
- Informative, full-color retail packaging
- Limited lifetime warranty



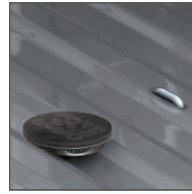
Engage the double locking pins for superior pin strength



Retract the sturdy 3/8" handle and drop the ball into the hole



After towing, flip the ball over to eliminate obstructions



Install the hole cover to protect the ball from the elements



66165  
Replacement rubber hole cover available



60616  
Replacement gooseneck ball available

If a particular application is not listed in the table below, see the original Double Lock gooseneck hitch application guide on page 284

Make / Model	Style	Years	EZr™ Kit#	Notes	Bracket#	EZr™ Hitch#
<b>Chevrolet</b>						
Silverado 2500 HD / 3500 HD	High Country	15 - 18	60680	●, 1	60624	60611
	LT	11 - 18	60680	●, 1	60624	60611
	LTZ	11 - 18	60680	●, 1	60624	60611
	WT	11 - 18	60680	●, 1	60624	60611
	--	01 - 10	60681	●	60648	60619
<b>Dodge</b>						
Ram 2500 / 3500	--	03 - 10	60682 <b>NEW</b>	●, 1, 6, 7	60660	60619
<b>Ford</b>						
F-250 / F-350 Super Duty	--	11 - 16	60683 <b>NEW</b>	●	60645	60619
		99 - 10	60685 <b>NEW</b>	●	60647	60619
		17 - 17	See page 280 for OEM-style gooseneck hitch			
<b>GMC</b>						
Silverado 2500 HD / 3500 HD	Base	15 - 18	60680	●, 1	60624	60611
	Denali	11 - 18	60680	●, 1	60624	60611
	SLE	11 - 18	60680	●, 1	60624	60611
	SLT	11 - 18	60680	●, 1	60624	60611
	WT	11 - 14	60680	●	60624	60611
	--	01 - 10	60681	●	60648	60619
<b>Ram</b>						
2500	--	11 - 13	60682 <b>NEW</b>	●, 1, 6, 7	60660	60619
		14 - 17	See page 280 for OEM-style gooseneck hitch			
3500	--	11 - 12	60682 <b>NEW</b>	●, 1, 6, 7	60660	60619
		13 - 17	See page 280 for OEM-style gooseneck hitch			

1. Passenger-side wheel well flange must be bent for frame rail access
  6. Check inverted ball clearance with heavy loads on two-wheel drive
  7. Exhaust may have to be permanently lowered on power wagon and Mega Cab applications
- = No frame drilling required





30k  
GTW

# OEM-STYLE GOOSENECK HITCHES

OEM-style gooseneck hitches are designed for a unique, vehicle-specific fit. They quickly and securely bolt onto the vehicle's frame with no drilling or installation brackets required.

## Product Details

- Up to 30,000 lbs. GTW and 7,500 lbs. vertical load
- Weight ratings are limited to vehicle manufacturer's stated capacities
- Quickly bolts on underneath the truck bed in 45 minutes or less (#60614, #60626)
- Easy, one-person installation requires no lowering of exhaust or spare tire (#60700)
- Requires no additional hardware or installation brackets
- No drilling necessary except the truck bed holes
- Installation also requires no welding, bed flange trimming or bed removal
- Included patented 2 5/16" ball eliminates the need for a side handle
- Heavy-duty 5/8" safety chain loops for a reliable connection
- Tested for safety in accordance with SAE J2638
- Not compatible with X5 adapters
- Protected by a highly durable, rust-resistant, liquid A-coat
- Limited lifetime warranty



NEW

60626



60614



NEW

60700

## Quarter-turn gooseneck ball



60601 factory-style gooseneck ball operates with a simple, 1/4-turn latch-locking system

66155 replacement

Part#	Make / Model	Description	Years	Ball Size	Finish	GTW / Vertical Load
60626 <b>NEW</b>	Ram 3500	Gooseneck hitch	13 - 17	2 5/16"	A-coat	30,000 / 7,500 lbs.
60614	Ram 2500	Gooseneck hitch	14 - 17	2 5/16"	A-coat	30,000 / 7,500 lbs.
60700 <b>NEW</b>	Ford	Gooseneck hitch	17 - 17	2 5/16"	A-coat	30,000 / 7,500 lbs.
60601	Ford and Ram	Replacement OEM-style ball	--	2 5/16"	Chrome-plated	30,000 / 7,500 lbs.
66155	--	Replacement rubber hole cover	--	--	Black rubber	--

20k  
GTW

# X5 GOOSENECK TO 5TH WHEEL ADAPTER PLATES

The X5 adapter plate allows a gooseneck hitch to become a mounting platform for a 5th wheel hitch. The X5 shank simply drops into the gooseneck ball hole and instantly provides a set of industry-standard 5th wheel base rails. See the table below for gooseneck hitch compatibility.

For more information about selecting a 5th wheel hitch, see page 294.

## Product Details

- Converts a gooseneck hitch into a set of standard 5th wheel base rails
- Simple, secure design allows for fast installation and removal as needed
- For use with CURT and competitive 5th wheels up to 20,000 lbs.
- Capacity limited to lowest-rated towing component
- Accepts any standard CURT 5th wheel legs or roller (excludes OEM puck system)
- Protected by a durable carbide powder coat finish
- Co-cured in a rust-resistant liquid Bonderite® coating
- **Not compatible with OEM-style gooseneck hitches**
- **Not compatible with Sidewinder™ pin boxes**  
(Trademark of Cequent Consumer Products™)



16210 - Fits CURT original Double Lock



16220 - Fits CURT Double Lock EZr™



16310 - Fits B&W Turnoverball®

Part#	Fits	Capacity	Shank Style
16210	CURT Double Lock 60607, 60615, 60620, 60625	20,000 lbs.	Round shank
16220	CURT Double Lock EZr™ 60611 and 60619	20,000 lbs.	Round shank
16310	B&W Turnoverball® gooseneck hitch (does not work with shallow models)	20,000 lbs.	Square shank



# USING CUSTOM BRACKETS

30K

GTW

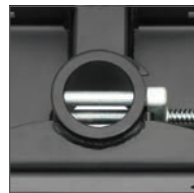
## ORIGINAL DOUBLE LOCK GOOSENECK HITCHES

- Double locking pins for superior trailer and trailer ball security
- Flip-and store ball keeps truck bed free of obstructions
- Installation requires no welding or truck bed removal
- Heavy-duty handle can be positioned on either side of the vehicle
- Rubber hole cover helps prevent corrosion in trailer ball hole
- Includes spring-loaded safety chain loops and grade 8 hardware
- Protected by a durable carbide powder coat finish
- Limited lifetime warranty

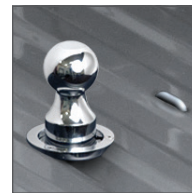
Installation brackets required.  
See guide on page 284



60607



Engage the double locking pins for superior pin strength



Retract the sturdy 3/8" handle and drop the ball into the hole



Chrome trim ring for a clean, professional finish

Part#	Make / Model	Style	Years	Ball Size	Finish	GTW / Vertical Load
60607*	See page 284 for full list of applications	--	--	2 5/16"	Carbide	30,000 / 7,500 lbs.
60615	Chevrolet Silverado / Sierra 1500 / 2500LD	New body	07 - 17	2 5/16"	Carbide	30,000 / 7,500 lbs.
60620	Nissan Titan	--	04 - 15	2 5/16"	Carbide	30,000 / 7,500 lbs.
60625	Toyota Tundra	--	00 - 06	2 5/16"	Carbide	30,000 / 7,500 lbs.

Installation brackets required for these products. See guide on page 284

\* Informative, full-color retail packaging

## ORIGINAL DOUBLE LOCK GOOSENECK HITCH ACCESSORIES

- Trailer balls fit all original Double Lock gooseneck hitches



60616



60602



60603



60606



66165

Bulk#	Pkg#	Description	Ball Size	Ball Rise	Ball Offset	GTW / Vertical Load
60616	--	Replacement ball for original Double Lock and EZr™ hitches	2 5/16"	--	--	30,000 / 7,500 lbs.
--	60602	Moves pivot point rearward for added cab clearance	2 5/16"	--	4"	20,000 / 5,000 lbs.
--	60603	Adds clearance for trucks with plastic or rubber bed liners	2 5/16"	1"	--	30,000 / 7,500 lbs.
60606	--	Supports gooseneck hitch for one-person installation	--	--	--	--
66165	--	Replacement rubber hole cover	--	--	--	--



See page 284 for original  
Double Lock application guide





On two-wheel drive trucks, a clearance check must be performed when truck is loaded and unloaded to verify the inverted ball will not interfere with the top of the differential. See footnote 6 for more details.

**30k**  
GTW

# ORIGINAL DOUBLE LOCK KITS & APPLICATION GUIDE

Make / Model	Style	Years	Double Lock Kit#	Foot Notes	Double Lock Hitch#	Bracket#	
<b>Chevrolet</b>							
Silverado 1500	--	07 - 18	60711	●	60615	60632	
	Classic body	99 - 07	60712	●	60607	60652	
Silverado 1500 Classic	--	07 - 07	60712	●	60607	60652	
Silverado 1500 HD Classic	--	07 - 07	60712	●	60607	60652	
Silverado 2500	--	99 - 04	60712	●	60607	60652	
Silverado 2500 HD	High Country	15 - 18	60710	●	60607	60604	
	LT	11 - 18	60710	●	60607	60604	
	LTZ	11 - 18	60710	●	60607	60604	
	WT	11 - 18	60710	●	60607	60604	
	--	01 - 10	60712	●, 4	60607	60652	
Silverado 3500 HD	High Country	15 - 18	60710	●	60607	60604	
	LT	11 - 18	60710	●	60607	60604	
	LTZ	11 - 18	60710	●	60607	60604	
	WT	11 - 18	60710	●	60607	60604	
	--	01 - 10	60712	●, 4	60607	60652	
	Old body	99 - 00	60713	●	60607	60631	
Full Size Pickups	Excluding 34" frame (O.D.)	88 - 98	60713	●	60607	60631	
<b>Dodge</b>							
Ram 1500	Excluding factory air suspension	09 - 10	60730	●	60607	60657	
	--	02 - 08	60733	1, 2	60607	60659	
		94 - 01	60734	●	60607	60635	
Ram 2500	--	03 - 10	60732	●, 1, 2, 6	60607	60661	
		94 - 02	60734	●, 6	60607	60635	
Ram 3500	--	03 - 10	60732	●, 1, 2, 6	60607	60661	
		94 - 02	60734	●, 6	60607	60635	
<b>Ford</b>							
F-150	King Ranch	15 - 18	60724	●	60607	60649	
	Lariat	15 - 18	60724	●	60607	60649	
	Limited	16 - 18	60724	●	60607	60649	
	Platinum	15 - 18	60724	●	60607	60649	
	Raptor	17 - 18	60724	●	60607	60649	
	SSV	16 - 18	60724	●	60607	60649	
	XL	15 - 18	60724	●	60607	60649	
	XLT	15 - 18	60724	●	60607	60649	
	--		04 - 14	60721	●	60607	60641
			97 - 03	60722	●	60607	60637
			80 - 96	60723	●, 1	60607	60636
	Heritage Edition	04 - 04	60722	●	60607	60637	
F-250	New body	97 - 03	60722	●	60607	60637	
	Old body	80 - 98	60723	--	60607	60636	

All models: Brake, fuel and electrical lines may need to be loosened or repositioned. Heat shield requires modification or removal.

- |  |   |
|--|---|
| 1. Passenger-side wheel well must be notched for frame rail access     | 4. Vacuum canister requires relocation (kit included)                         |
| 2. Parking brake cable bracket may require relocation                  | 5. Ball cannot be turned over. Brake lines must be cable-tied (ties included) |
| 3. Exhaust may have to be permanently lowered on 2005 and newer models | 6. Do not invert ball with heavy loads on 2 wheel drive models                |
|  | ● = No frame drilling required  |

Make / Model	Style	Years	Double Lock Kit#	Foot Notes	Double Lock Hitch#	Bracket#
<b>Ford (continued)</b>						
F-250 & F-350 Super Duty	--	11 - 16	60720	●, 3	60607	60644
		99 - 10	60720	●, 3	60607	60644
F-350	Excluding overload springs	80 - 98	60723	●	60607	60636
	--	80 - 98	60723	--	60607	60636
F-450 Super Duty	Excluding cab & chassis	08 - 12	60720	●, 3	60607	60644
<b>GMC</b>						
Sierra 1500	--	07 - 18	60711	●	60615	60632
	Classic body	99 - 07	60712	●	60607	60652
Sierra 1500 Classic	--	07 - 07	60712	●	60607	60652
Sierra 1500 HD Classic	--	07 - 07	60712	●	60607	60652
Sierra 2500	--	99 - 04	60712	●	60607	60652
Sierra 2500 HD	Base	15 - 18	60710	●	60607	60604
	Denali	11 - 18	60710	●	60607	60604
	SLE and SLT	11 - 18	60710	●	60607	60604
	WT	11 - 14	60710	●	60607	60604
	--	01 - 10	60712	●, 4	60607	60652
Sierra 3500 HD	Base	15 - 18	60710	●	60607	60604
	Denali	11 - 18	60710	●	60607	60604
	SLE	11 - 18	60710	●	60607	60604
	SLT	11 - 18	60710	●	60607	60604
	WT	11 - 14	60710	●	60607	60604
	--	01 - 10	60712	●, 4	60607	60652
	Old body	99 - 00	60713	●	60607	60631
Full Size Pickups	Excluding 34" frame (O.D.)	88 - 98	60713	●	60607	60631
<b>Nissan</b>						
Titan	--	17 - 17	60740	●, 1	60620	60664
		04 - 15	60740	●, 1	60620	60664
<b>Ram</b>						
1500	Air suspension	13 - 16	60731	●	60607	60658
	Excluding factory air suspension	11 - 17	60730	●	60607	60657
2500	--	11 - 13	60732	●, 1, 2, 6	60607	60661
3500	--	11 - 12	60732	●, 1, 2, 6	60607	60661
<b>Toyota</b>						
Tundra	Base, 6.5' bed	07 - 13	60751	●, 5	60607	60667
	Limited, 6.5' bed	07 - 18	60751	●, 5	60607	60667
	SR, 6.5' bed	14 - 18	60751	●, 5	60607	60667
	SR5, 6.5' bed	14 - 18	60751	●, 5	60607	60667
	SR5, 6.5' bed	07 - 11	60751	●, 5	60607	60667
	TRD Pro, 6.5' bed	15 - 17	60751	●, 5	60607	60667
	--	00 - 06	60750	●, 6	60625	60665

All models: Brake, fuel and electrical lines may need to be loosened or repositioned. Heat shield requires modification or removal.

- |  |   |
|--|---|
| 1. Passenger-side wheel well must be notched for frame rail access     | 4. Vacuum canister requires relocation (kit included)                         |
| 2. Parking brake cable bracket may require relocation                  | 5. Ball cannot be turned over. Brake lines must be cable-tied (ties included) |
| 3. Exhaust may have to be permanently lowered on 2005 and newer models | 6. Do not invert ball with heavy loads on 2 wheel drive models                |
|  | ● = No frame drilling required  |



**30k**

GTW

# UNDER-BED QUICK GOOSE II GOOSENECK HITCHES

- Two-handle operation for raising and lowering the gooseneck ball
- Dual handles eliminate the need to climb in and out of the truck bed
- Drop-ball storage keeps the truck bed free of obstruction
- Installation requires no welding or truck bed removal
- Heavy-duty handles can be positioned on either side of the vehicle
- Chrome-plated trim ring provides a finished look
- Rubber hole cover #66145 helps prevent corrosion in trailer ball hole
- Includes spring-loaded safety chain loops and grade 8 hardware
- Protected by a durable carbide powder coat finish
- Informative, full-color retail packaging
- Limited lifetime warranty

Installation brackets required.  
See guide on page 287



60630



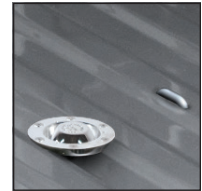
66145



Raise / lower the trailer ball without climbing in truck bed



Ball up, ready for coupling



Ball stored, without included rubber cover

Bulk#	Pkg#	Description	Make	Ball Size	Finish	GTW / Vertical Load
--	60630	Quick Goose II gooseneck hitch	Chevrolet / GMC and Ford	2 5/16"	Carbide	30,000 / 7,500 lbs.
--	60640	Quick Goose II gooseneck hitch	Dodge / Ram and Ford	2 5/16"	Carbide	30,000 / 7,500 lbs.
66145	--	Replacement rubber hole cover	--	--	Black rubber	--

**30k**

GTW

# UNDER-BED FOLDING BALL GOOSENECK HITCH

- Folding ball design keeps truck bed free of obstructions
- Permanently attached gooseneck ball cannot be loosened or stolen
- Chrome-plated 2 5/16" trailer ball fits all standard gooseneck trailers
- Includes spring-loaded safety chain loops and grade 8 hardware
- Protected by a highly durable carbide powder coat finish
- Patent# D656,437 and D664,076
- Informative, full-color retail packaging
- Limited lifetime warranty

Installation brackets required.  
See guide on page 287



61652



Pull ball pin, raise cover



Lower ball, close cover



Ball stored

Pkg#	Ball Size	Finish	GTW / Vertical Load
61652	2 5/16"	Carbide	30,000 / 7,500 lbs.



On two-wheel drive trucks, a clearance check must be performed when truck is loaded and unloaded to verify the inverted ball will not interfere with the top of the differential. See footnote 6 for more details.

# QUICK GOOSE II & FOLDING BALL APPLICATION GUIDE

- Weight ratings are limited to vehicle manufacturer's stated capacities
- Vehicle-specific design optimizes strength and installation time
- Protected by a rust-resistant liquid Bonderite® coating
- Includes grade 8 mounting hardware



60667

Make / Model	Style	Years	Bracket#	Quick-Goose II Hitch#	Folding Ball Hitch#	Foot Notes
<b>Chevrolet / GMC</b>						
Silverado / Sierra 1500	Classic body	99 - 07	60652	60630	61652	●
Silverado / Sierra 2500	--	99 - 04	60652	60630	61652	●
Silverado / Sierra 2500HD / 3500	--	01 - 10	60652	60630	61652	●, 4
Silverado / Sierra 2500 / 3500	Old body	01 - 10	60652	60630	61652	●, 4
		99 - 00	60631	60630	61652	●
Full-size pickup trucks	Excluding 34" frame (O.D.)	88 - 98	60631	60630	61652	●
<b>Dodge</b>						
Ram 1500	--	02 - 08	60659	60640	--	1, 2
		94 - 01	60635	60640	--	●
Ram 2500	--	03 - 10	60661	--	61652	●, 1, 2, 6
		94 - 02	60635	60640	--	●, 6
Ram 3500	--	03 - 10	60661	--	61652	●, 1, 2, 6
		94 - 02	60635	60640	--	●, 6
<b>Ford</b>						
F-150	--	04 - 14	60641	60630	61652	●
		97 - 03	60637	60630	61652	●
		80 - 96	60636	60630	61652	●, 1
F-250	Heritage Edition	04 - 04	60637	60630	61652	●
	New body	97 - 03	60637	60630	61652	●
F-250 / F-350 Super Duty	Old body	80 - 98	60636	60630	61652	--
		--	11 - 16	60644	60630	61652
F-350	Excluding overload springs	99 - 10	60644	60640	--	●, 3
		--	80 - 98	60636	60630	61652
F-450 Super Duty	Excluding cab & chassis	80 - 98	60636	60630	61652	--
		08 - 12	60644	60640	--	●, 3
<b>Ram</b>						
2500	--	11 - 13	60661	--	61652	●, 1, 2, 6
3500	--	11 - 12	60661	--	61652	●, 1, 2, 6

All models: Brake, fuel and electrical lines may need to be loosened or repositioned. Heat shield requires modification or removal.

- |  |   |
|--|---|
| 1. Passenger-side wheel well must be notched for frame rail access     | 4. Vacuum canister requires relocation (kit included)                         |
| 2. Parking brake cable bracket may require relocation                  | 5. Ball cannot be turned over. Brake lines must be cable-tied (ties included) |
| 3. Exhaust may have to be permanently lowered on 2005 and newer models | 6. Do not invert ball with heavy loads on 2 wheel drive models                |
|  | ● = No frame drilling required  |

**30k**

GTW

## OVER-BED FOLDING BALL GOOSENECK HITCH

- Folding ball design keeps truck bed free of obstructions
- Stainless steel safety pin and pivot spring prevent binding
- Permanently attached gooseneck ball cannot be loosened or stolen
- Chrome-plated 2 5/16" trailer ball fits all standard gooseneck trailers
- Includes spring-loaded safety chain loops and grade 8 hardware
- Protected by a highly durable carbide powder coat finish
- Patent#: 5,571,270; 5,755,452; 5,435,585
- Informative, full-color retail packaging
- Limited lifetime warranty

Installation brackets required.  
See guide on page 289



61052

Pkg#	Plate Size	Ball Size	Finish	GTW / Vertical Load
61052	12" x 14"	2 5/16"	Carbide	30,000 / 7,500 lbs.

**30k**

GTW

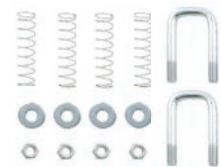
## OVER-BED FIXED BALL GOOSENECK HITCH

- Reinforcement required to reach max gross trailer weight rating
- Safety chain hook-ups sold separately
- Protected by a highly durable carbide powder coat finish

Installation brackets required.  
See guide on page 289



61100



66113

Part#	Description	Plate Size	Ball Size	Finish	GTW / Vertical Load
61100	Flat plate with fixed trailer ball	12" x 12"	2 5/16"	Carbide	30,000 / 7,500 lbs.
66113	Safety chain U-bolt kit	--	--	--	--

**30k**

GTW

## OVER-BED FLAT PLATE GOOSENECK HITCH

- Reinforcement required to reach max gross trailer weight rating
- Flat plate with fixed trailer ball and two 1/2" forged D-rings
- Protected by a highly durable carbide powder coat finish

Installation brackets required.  
See guide on page 289



65500

Part#	Plate Size	Ball Size	Finish	GTW / Vertical Load
65500	13" x 48"	2 5/16"	Carbide	30,000 / 7,500 lbs.



**30k**  
GTW

# OVER-BED GOOSENECK APPLICATION GUIDE

- Up to 30,000 lbs. GTW (limited to vehicle capacities)
- Vehicle-specific design optimizes strength and installation time
- Constructed from high-strength, laser-cut steel for a precise fit
- Protected by a rust-resistant liquid Bonderite® coating
- Includes grade 8 mounting hardware



61301

Make / Model	Style	Years	Bracket#	Foot Notes
<b>Chevrolet / GMC</b>				
C/K Series 1500	Long bed	88 - 98	61503	--
	Short bed	88 - 98	61504	--
Silverado / Sierra 1500	--	07 - 18	61331	--
	Classic body	99 - 07	61341	●
Silverado / Sierra 1500 / 1500 HD Classic	--	07 - 07	61331	--
C/K Series 2500 / 3500	Long bed, old body	88 - 00	61503	--
	Short bed, old body	88 - 00	61504	--
Silverado / Sierra 2500 HD / 3500	--	11 - 18	61301	●
	--	01 - 10	61341	●
Silverado / Sierra 2500 LD	Classic body	99 - 07	61341	●
<b>Dodge</b>				
Ram 1500	--	02 - 08	61319	●
	--	94 - 01	61509	--
Ram 2500 / 3500	--	03 - 10	61529	--
	--	94 - 02	61509	--
<b>Ford</b>				
F-150	--	04 - 13	61321	●
	--	97 - 03	61506	--
	--	80 - 96	61505	--
	Heritage Edition	04 - 04	61506	--
F-250	Old body	97 - 98	61505	--
	--	80 - 96	61505	--
F-350	--	97 - 98	61505	--
	--	80 - 96	61505	--
F-250 / F-350 Super Duty	--	99 - 16	61332	●
F-450 Super Duty	Excluding cab & chassis	08 - 11	61332	●
<b>Ram</b>				
2500 / 3500	--	11 - 12	61529	--
<b>Universal</b>				
Universal rail kit	Raw finish	--	61502	--

● = No frame drilling required

## WELD-ON GOOSENECK BALL

- Constructed from high-strength, ready-to-weld steel alloy
- Heat-treated for optimum strength and durability
- Tested for safety to meet U.S. VESC V-5 specifications



40094

Part#	Ball Size	GTW	Fits
40094	2 5/16"	30,000 lbs	2 5/16" gooseneck couplers

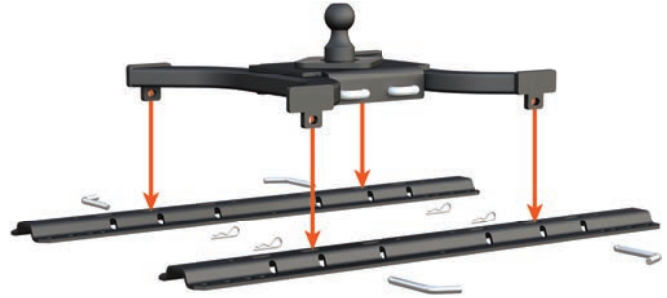
# USING EXISTING 5TH WHEEL RAILS

25k

GTW

## 5TH WHEEL RAIL GOOSENECK HITCHES

- Allows pickup trucks equipped with 5th wheel rails to tow gooseneck trailers
- Mounts to all industry-standard 5th wheel rails
- Four-pin installation and removal for easy truck bed access
- Features a welded 2 5/16" trailer ball
- #16055 can be positioned over the axle or flipped to provide a 3" rearward offset
- Includes safety chain hookups, pins & clips
- Protected by a durable carbide powder coat finish
- Tested for safety in accordance with SAE J2638
- Informative, full-color retail packaging



Pkg#	Description	Ball Size	Finish	GTW
16085	Spyder gooseneck hitch	2 5/16"	Carbide	25,000 lbs.
16055	Bent plate gooseneck hitch with 3" offset	2 5/16"	Carbide	25,000 lbs.
16902	Replacement rail pins & clips	--	Yellow zinc	--

## CUSTOM 5TH WHEEL BRACKETS

See page 302 to select custom brackets

CURT custom brackets are designed to bolt onto the vehicle's frame and provide a set of permanent base rails in the truck bed to mount a 5th wheel hitch. Each set of brackets is designed to fit a specific vehicle application.

- Provides a solid mounting point for 5th wheel base rails and a 5th wheel hitch
- Brackets designed to be used in combination with CURT base rails #16104 or #16204
- Vehicle-specific application reduces or eliminates drilling to cut installation time in half
- Protected by a rust-resistant liquid Bonderite® coating
- Includes mounting hardware



# GOOSENECK ELECTRICAL



## CUSTOM WIRING HARNESS EXTENSIONS

- Routes a 7-way RV blade socket into truck bed while retaining use of rear socket
- Simple plug-and-play design eliminates the need for cutting or splicing
- Neoprene well nuts isolate steel bolts from aluminum surfaces (#57007)
- See page 250 for more information



Right-angle plug for easy installation



## 7-WAY RV BLADE EXTENSION

- Routes existing 7-way RV blade socket into full-size pickup truck bed (7' length)
- Universal size fits any 7-way RV blade socket
- Allows for easy connection of 5th wheel or gooseneck wiring
- See page 251 for more information



## REPLACEMENT 7-WAY RV BLADE HARNESSES

- Replaces the trailer-end plug of any 7-way harness
- Wires protected by heavy-duty, weather-resistant cable
- Cold-weather harnesses feature soft thermoplastic elastomer casing to remain flexible in cold temperatures (temperature rating from -40°F up to 221°F)
- See page 251 for more information



## BRAKE CONTROLS

- Equipped with quick plugs for fast, easy installation
- Easily calibrated for all towing needs
- See page 238 for our complete brake control line

NEW



51170

NEW



51160

Name	Retail Pkg#	Six-Pack#	Repl. Bracket#	Axles / Brakes	Activation Method	Display	Vertical Mount Angle	Level Adjust	Warranty
Spectrum™	51170 <b>NEW</b>	--	--	1 - 4 / 2 - 8	Tri-axis inertia	Tri-color LED	Any	Auto	Limited Lifetime
Assure™	51160 <b>NEW</b>	--	--	1 - 4 / 2 - 8	Tri-axis inertia	Dot matrix	Any	Auto	Limited Lifetime
TriFlex™	51140	51142	51144	1 - 4 / 2 - 8	Tri-axis inertia	Digital	-20° to +70°	Auto	Limited Lifetime
Relfex™	51130	51132	--	1 - 4 / 2 - 8	Dual-axis inertia	Digital	Any	Auto	Limited Lifetime
Venturer™	51120	51122	51124	1 - 4 / 2 - 8	Time-based	Digital	Any	Auto	Limited Lifetime
Discovery™	51110	--	51114	1 - 3 / 2 - 6	Time-based	LED	Any	Auto	Limited Lifetime