



Canadian Immigration: Starting your journey in 2024

Riley Cohen
CEO, CanadaVisa Media

with Guest Speaker WES

November 28, 2024



Agenda

1 Provincial Nominee Programs (PNPs)

2 Express Entry Overview

3 Category-Based Draws

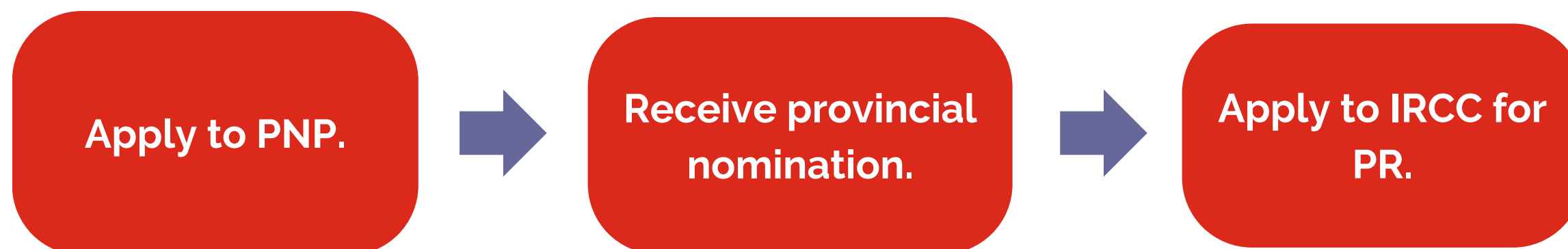
4 Recent Immigration Changes

Provincial Nominee Programs (PNPs)

Pool-based PNP Stream



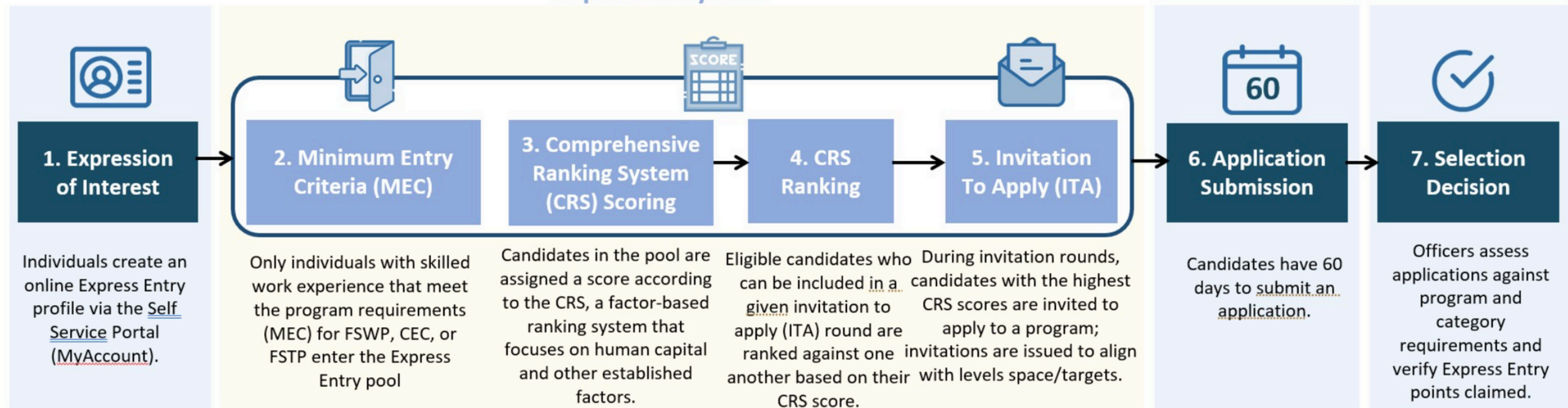
Direct Application PNP Stream



Express Entry

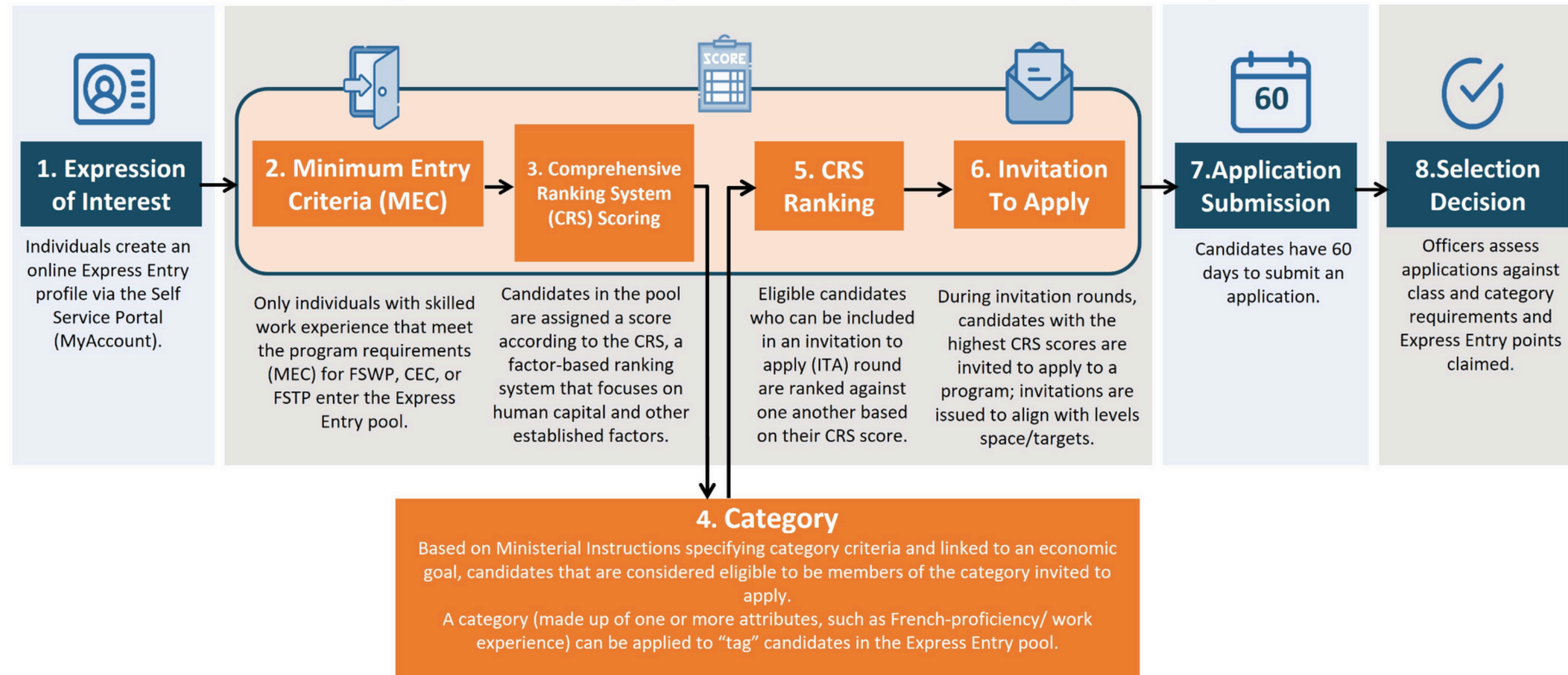
Figure 1: How Express Entry works

Express Entry Pool



Category-Based Draws

Figure 2: How category-based selection works in Express Entry



Lowered PR and PNP Targets

Year	Latest PR admissions target	Previous PR admissions target
2025	395,000	500,000
2026	380,000	500,000
2027	365,000	N/A

Year	PNP PR target	Previous PNP PR target
2025	55,000	110,000
2026	55,000	120,000
2027	55,000	N/A

Increase in Federal High Skilled (FHS)

Year	In-Canada Focus + Federal Economic Priorities	Previous FHS Target
2025	124,680	117,500
2026	123,230	117,500
2027	118,730	N/A

Year	In-Canada Focus	Federal Economic Priorities
2025	82,980	41,700

Where to Get Started

CanadaVisa+

PNP Finder



Select one or more filters to narrow down your results:

Province / Territory:

Category / Stream:

Program Status: ☐ Active ☐ Closed ☒ Show all

Express Entry-Linked: ☐ Yes ☐ No ☒ I don't know

Job Offer Required: ☐ Yes ☐ No ☒ I don't know

Which PNPs are currently open and issuing invitations?

Province	Category / Stream	Program Status	Express Entry-Linked	Job Required	Draw History
Alberta	Accelerated Tech Pathway	Accepting applications	Yes	Yes	See history
Alberta	Rural Entrepreneur	Coming soon	No	No	See history
Alberta	Rural Renewal	Coming soon	No	Yes	See history
Alberta	Express Entry	Passive	Yes	No	See history

CanadaVisa+ Your free and complete Canadian immigration assessment

Check how successful you would be in the Express Entry Pool (40+ immigration programs). More Canadian Immigration programs coming soon!

Get started

Learn more →

CRS Calculator

CRS Calculator (Comprehensive) Express Entry Eligibility Evaluator

Welcome to CanadaVisa's free Express Entry Eligibility Evaluator. Complete the questions below. You will then be notified instantly of your estimated CRS score.

How old are you?*

What is your highest level of completed education?

Have you studied in Canada? ☐ Yes ☐ No

English proficiency:

French proficiency:

Skilled Work Experience

Skilled Worker Experience is defined by the Training, education, experience and responsibilities (TEER) system: Management occupations (TEER 0), Occupations that usually require a university degree (TEER 1), Occupations that usually require a college diploma, apprenticeship training of 2 or more years, or supervisory occupations (TEER 2), Occupations that usually require a college diploma, apprenticeship training of less than 2 years, or more than 6 months of on-the-job training (TEER 3). If you need help identifying if your work experience is considered skilled, you can use the [CanadaVisa Skilled Occupation Classifier](#)

How many years of full-time (30 hours per week or equivalent part-time) Skilled Work experience have you obtained **OUTSIDE OF CANADA** within the last 10 years?

How many years of full-time (30 hours per week or equivalent part-time) continuous Skilled Work experience have you obtained **INSIDE CANADA** within the last 10 years?

Are you Married or in a Common-Law Partnership? ☐ Yes ☐ No

Do you or your spouse/common-law partner have a sibling (brother or sister) who is a Canadian citizen or permanent resident, who is currently living in Canada and is 18 years of age or older? ☐ Yes ☐ No

Thank you

Please ask any questions in the chat



World Education Services

Empowering Immigrant Success: Navigating Canada's Job Market and Higher Education with WES Credential Evaluations

Nov 2024

Presenters



Abhinav Jana

Head, Digital Marketing



Kevin Kamal

Director, Business Development



Founded in 1974, WES is a non-profit social enterprise that supports the educational, economic, and social inclusion of immigrants, refugees, and international students. From evaluating academic credentials to shaping policy, designing programs, and providing philanthropic funding, we partner with a diverse set of organizations, leaders, and networks to uplift individuals and drive systems change.





Our Vision

Everyone is able to put their education, experience, and skills to work **anywhere** in the world.



Our Mission

We help people **learn, work, and thrive** in new places. We help society **recognize the value** of people's education and experience.



What is a credential evaluation?

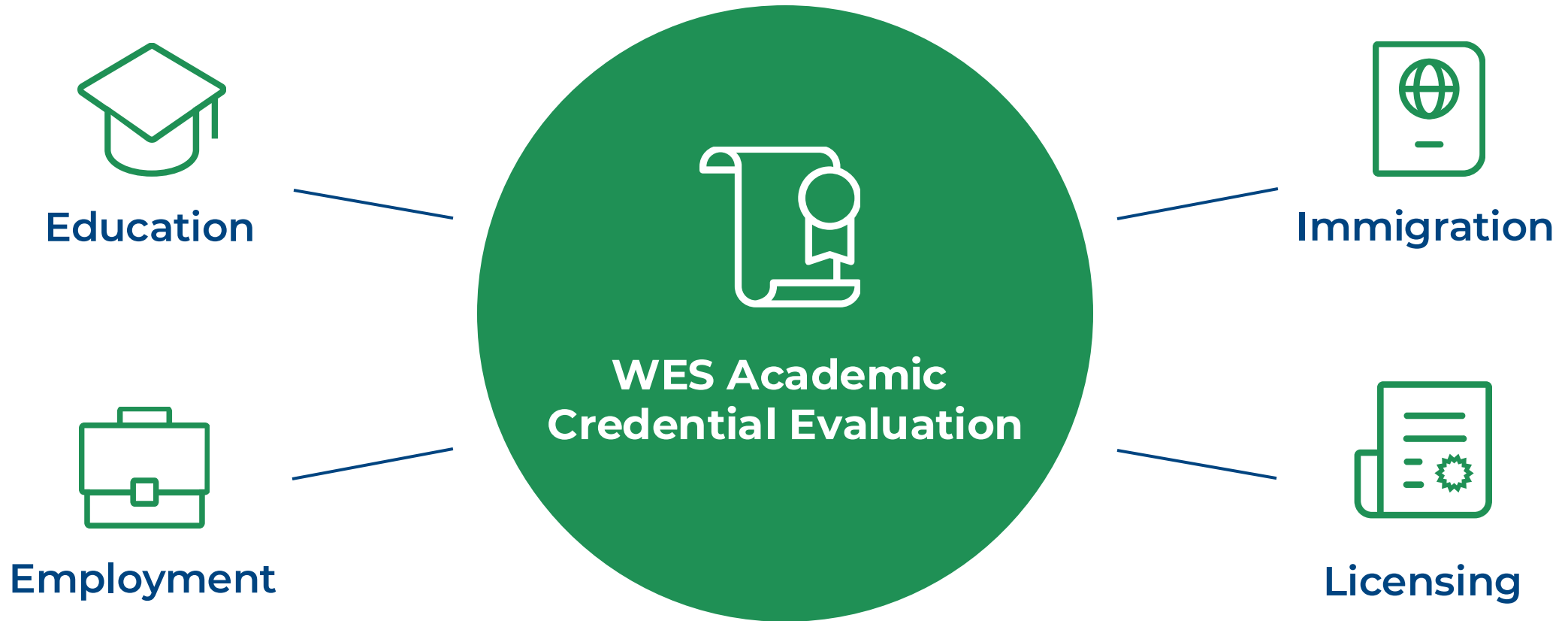
A credential evaluation is a comparison of one's academic accomplishments to standards in the U.S. or Canada. The evaluation report helps institutions like schools, employers, licensing boards, or immigration authorities better understand an individual's educational background.

A report from WES:

- Identifies and describes the academic study
- Verifies that the institution is a legitimate teaching authority
- May include a grade point average (GPA) equivalency
- Confirms the authenticity of the academic documents

Utility of a Credential Evaluation

A WES credential evaluation is widely accepted across industries



How can I use my report to support my job search?

Beyond being a requirement for some job applications, a credential evaluation report can be a useful tool in your job search in at least four ways:

- **Identify suitable jobs:** Use your degree equivalency to determine which jobs match your qualifications. For example, if your degree is equivalent to a bachelor's, you might skip jobs requiring only a high school diploma.
- **Enhance your résumé and cover letter:** Include your evaluation result in your résumé and cover letter, indicating that your international education has been verified and meets the job's requirements.
- **Boost your interview confidence:** Bring a copy of your evaluation report to show the interviewer. And remember to highlight your language skills and international experience.
- **Negotiate your salary:** If you receive a job offer, you can suggest having your official evaluation report sent directly by the credential evaluation agency to the employer. This is a good step to help ensure that you are compensated appropriately for your skills and education.

Options for WES Credential Evaluations

Document-by-Document (DxD)

- Based on authenticated documents
- Identifies and describes each credential—such as a degree or diploma—that an applicant submits to WES
- Provides the equivalent credential in terms of U.S. education
- Is appropriate for immigration and employment purposes, and for entering a college or university program as a first-year student
- Starting at \$111 USD | \$126 CAD

Course-by-Course (CxC)

- Based on authenticated documents
- Includes all features in a DxD report
- Also includes a detailed analysis of each course listed on the transcript
 - Includes semester credits and grades converted and a calculated GPA
- A CxC evaluation report usually meets the requirements of licensing boards and higher education graduate programs.
- Starting at \$176 USD | \$230 CAD

Educational Credential Assessment (ECA)

- Based on authenticated documents
- Verifies your education background for Canadian immigration purposes.
- This report Highlights the equivalency of your credentials in terms of Canadian education.
- Starting at C\$248

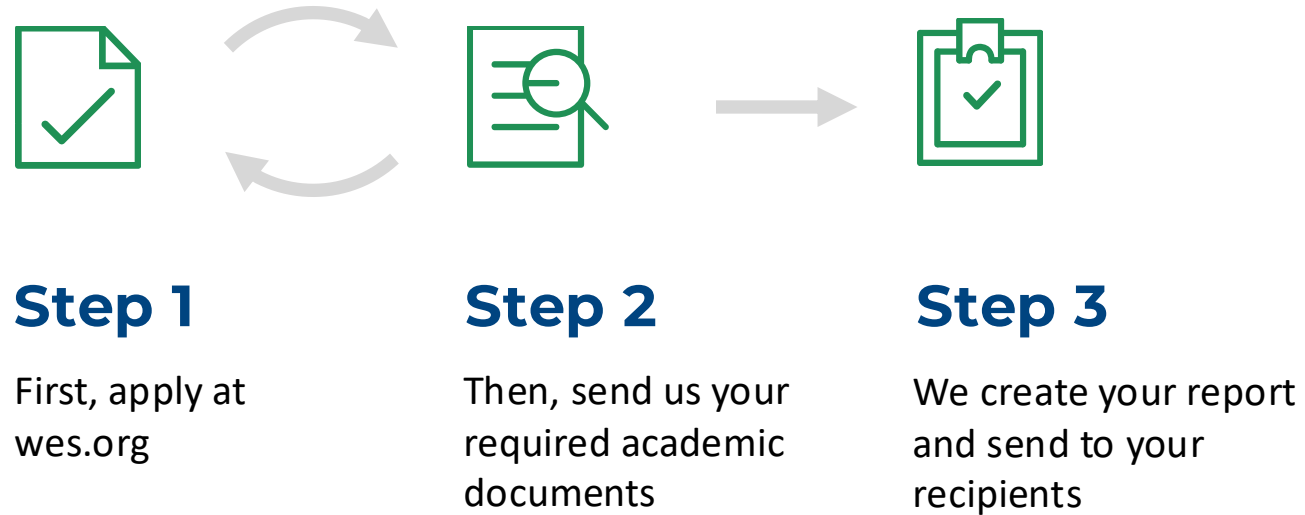
How to get started:

- Submit your application and receive your WES reference number
- Review the document requirements and send in your documents. Remember to include your WES reference number. Normally the academic transcript must arrive WES directly from the issuing institution/authority
- We review your credentials, evaluate your study, create your evaluation report, and deliver it to you and any recipients you have identified.

What documents to submit and how:

- **Applicant documents:** You may upload copies of certain documents (for example, copies of diplomas, degree certificates, English translations of any documents not issued in English).
- **Arrange for your official transcript to be sent to WES:** Official documents can be sent to WES digitally or through postal mail. Over 7,500 institutions now send WES official records digitally. Your documents should be official marksheets issued by the University or Autonomous colleges.
- **Official documents from universities:** When WES receives your official documents, they will be matched to your account, scanned in, and reviewed – you will then receive an email update advising you of the current status (what documents we have and if any are missing).

Credential Evaluation Process



Processing Times

Applicant

Complete your application

Place your order in your WES Account.

Make payment

Payment is made through a secured platform after you have completed your application.

Submit your documents

Submit the required documents to get your evaluation started. Learn what documents you need, [here](#).

WES

All required documents received, reviewed and accepted

WES receives your documents from your *issuing institution or examination board*. After all documents are received, our team reviews and verifies their authenticity. *This is an essential step in our process*. Once approved, your order moves to the next step.

Typically 2 weeks (up to 4-6 weeks)

Evaluation begins

Your evaluation begins immediately after your documents have been accepted.

Up to 2 Weeks DxD and ECA, 4 Weeks CxC

Evaluation complete!





The WES Advantage

Unmatched value, expertise, and impact

Benefits for Applicants

- ✓ Fast, accurate, and reliable service
- ✓ Expert staff, network, and resources
- ✓ Lifetime value and competitively priced.
- ✓ Excellent customer and client services
- ✓ Embracing technology; fast and secure report delivery
- ✓ Social Impact Programs

Questions and Comments



Thank you

Need more information?

Visit wes.org