

CERLAT

MOSAIC

Catálogo
General
2019



CERLAT


CERLAT | CATÁLOGO GENERAL 2019

- 02 SIMBOLOGÍA
- 03 ÍNDICE ALFABÉTICO
- 04 PORCELÁNICO (Pavimento/Revestimiento)
- 06 22,5x22,5 · 8^{55/64}"x8^{55/64}"
- 72 22,5x25,9 · 8^{55/64}"x10^{13/64}"
- 94 CARACTERÍSTICAS TÉCNICAS / MODELO
- 96 CARACTERÍSTICAS TÉCNICAS GENERALES
- 98 PACKING
- 99 RECOMENDACIONES DE COLOCACIÓN





SIMBOLOGÍA


 **Ortogonalidad.**
Rectangularity / Rechwinkligkeit / Angularite.


 **Longitud y anchura.**
Sides / Seiten / Cotes.


 **Grosor.**
Thickness / Dicke / Epaisseur.

 **Curvatura.**
Curvature / Kurvung / Courbure.


 **Absorción de agua.**
Water absorption / Wasseraufnahme / Absorption d'eau.

 **Resistencia a la flexión.**
Flexion resistance / Bigefestigkeit / Résistance á la rupture.


 **Carga de rotura.**
Breaking strength / Bruchfestigkeit / Résistance á la rupture.


 **Coefficiente de la dilatación térmica lineal.**
Thermal expansion coefficient / Linearer Wärmeausdehnungskoeffizient / Coefficient de dilatation thermique lineaire


 **Brillo.**
Glossy / Glänzend / Brillant.


 **Mate.**
Matt / Matt / Mat.


 **Mate-Brillo.**
Matt-Glossy / Matt-Glänzend / Mat-Brillant.

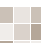
 **Resistencia al choque térmico.**
Resistance to thermal shock / Temperaturewechselbeständigkeit / Résistance aux écarts de temperature.

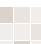
 **Resistencia al hielo.**
Frost resistance / Frostbeständigkeit / Résistance au gel.


 **Resistencia a la abrasión.**
Resistance to abrasion / Abriebfestigkeit / Résistance à la abrasion.


 **Dureza de la superficie Mohs.**
Mohs surface hardness / Ritzhärte nach Mohs / Résistance de la surface Mohs.


 **Destonificado alto.**
Variety of shade : high / Grad unterschiedlecher Farbnuancen : hoch / Niveau de variation de tons : élevé


 **Destonificado medio.**
Variety of shade : medium / Grad unterschiedlecher Farbnuancen : mittel / Niveau de variation de tons : moyen


 **Destonificado suave.**
Variety of shade : low / Grad unterschiedlecher Farbnuancen : gering / Niveau de variation de tons : faible


 **Resistencia al cuarteo.**
Creazing resistance / Haarriss-Bestaendigkeit / Résistance aux craquelures.


 **Pasta Coloreada.**
Coloured Body / Gefärbter Scherben / Pâte colorée


 **Resistencia al deslizamiento.**
Slip resistance / Bestimmung der rutschmme eigenschaft / Résistance au glissement.


 **Resistencia al deslizamiento.**
Slip resistance / Bestimmung der rutschmme eigenschaft / Résistance au glissement.

 **CLASE DIN 51097 ANTISLIP**
DIN 51097: Ramp. Pavimento para zonas húmedas de andar descalzo.
Wet-loaded barefoot areas / Bodenfliesen für Nassbelastee Barfußbereiche / Revêtement de sol pour les zones humides de la marche pieds nus .

 **Resistencia a las manchas.**
Resistance to stainings / Bestaendigkeit gegen fleckenbilder / Résistance aux taches.

 **Resist. a bajas concentraciones de ácidos y alcalis.**
Low concentration of acids and alkalies / Nledrige koncentration con sären und laugen / Faible concentration d'acides et bases.

 **Resist. a altas concentraciones de ácidos y alcalis.**
High concentration of acids and alkalies / Hohe koncentration con sären und laugen / Haute concentration d'acides et bases.

 **Resist. a productos domésticos de limpieza.**
Household chemical resistance / Widerstanfähigkeit gegenüber Chemichen Haushalts Produkten / Résistance aux produits chimiques á usage domestique.

ÍNDICE | Alfabético

A		F		P	
Andria 22 (22,5x22,5 · 8 ^{55/64} ”x8 ^{55/64} ”)	06	Fidensa 22 (22,5x22,5 · 8 ^{55/64} ”x8 ^{55/64} ”)	34	Palermo 22 (22,5x22,5 · 8 ^{55/64} ”x8 ^{55/64} ”)	54
Aprica 22 (22,5x22,5 · 8 ^{55/64} ”x8 ^{55/64} ”)	08			Pavia 22 (22,5x22,5 · 8 ^{55/64} ”x8 ^{55/64} ”)	56
Arezzo 22 (22,5x22,5 · 8 ^{55/64} ”x8 ^{55/64} ”)	10	G		R	
Arosa Hex (22,5x25,9 · 8 ^{55/64} ”x10 ^{13/64} ”)	74	Génova 22 (22,5x22,5 · 8 ^{55/64} ”x8 ^{55/64} ”)	36	Rávena 22 (22,5x22,5 · 8 ^{55/64} ”x8 ^{55/64} ”)	58
B		Ginebra Hex (22,5x25,9 · 8 ^{55/64} ”x10 ^{13/64} ”)	80	Rímíni 22 (22,5x22,5 · 8 ^{55/64} ”x8 ^{55/64} ”)	60
Blanco Vintage 22 (22,5x22,5 · 8 ^{55/64} ”x8 ^{55/64} ”)	12	Goya 22 (22,5x22,5 · 8 ^{55/64} ”x8 ^{55/64} ”)	38	RóterdamHex (22,5x25,9 · 8 ^{55/64} ”x10 ^{13/64} ”)	92
Bolonia 22 (22,5x22,5 · 8 ^{55/64} ”x8 ^{55/64} ”)	14	L		S	
Botticelli 22 (22,5x22,5 · 8 ^{55/64} ”x8 ^{55/64} ”)	16	Lieja Hex (22,5x25,9 · 8 ^{55/64} ”x10 ^{13/64} ”)	82	Split Hex (22,5x25,9 · 8 ^{55/64} ”x10 ^{13/64} ”)	94
Brescia 22 (22,5x22,5 · 8 ^{55/64} ”x8 ^{55/64} ”)	28	Livorno 22 (22,5x22,5 · 8 ^{55/64} ”x8 ^{55/64} ”)	40	T	
Brianza 22 (22,5x22,5 · 8 ^{55/64} ”x8 ^{55/64} ”)	20	Lugano Hex (22,5x25,9 · 8 ^{55/64} ”x10 ^{13/64} ”)	84	Trani 22 (22,5x22,5 · 8 ^{55/64} ”x8 ^{55/64} ”)	62
Brindisi 22 (22,5x22,5 · 8 ^{55/64} ”x8 ^{55/64} ”)	22	M		Trento 22 (22,5x22,5 · 8 ^{55/64} ”x8 ^{55/64} ”)	64
C		Malinas Hex (22,5x25,9 · 8 ^{55/64} ”x10 ^{13/64} ”)	74	U	
Cagliari 22 (22,5x22,5 · 8 ^{55/64} ”x8 ^{55/64} ”)	24	Mesina 22 (22,5x22,5 · 8 ^{55/64} ”x8 ^{55/64} ”)	42	Udine 22 (22,5x22,5 · 8 ^{55/64} ”x8 ^{55/64} ”)	66
Calabria 22 (22,5x22,5 · 8 ^{55/64} ”x8 ^{55/64} ”)	26	Milán 22 (22,5x22,5 · 8 ^{55/64} ”x8 ^{55/64} ”)	44	Urbino 22 (22,5x22,5 · 8 ^{55/64} ”x8 ^{55/64} ”)	68
Calabria 153 (14,8x29,5 · 5 ^{53/64} ”x11 ^{39/64} ”)	26	Monocolores 22 (22,5x22,5 · 8 ^{55/64} ”x8 ^{55/64} ”)	46	V	
Carpi 22 (22,5x22,5 · 8 ^{55/64} ”x8 ^{55/64} ”)	28	Monocolores Hex (22,5x25,9 · 8 ^{55/64} ”x10 ^{13/64} ”)	74	Varese 22 (22,5x22,5 · 8 ^{55/64} ”x8 ^{55/64} ”)	70
Caserta 22 (22,5x22,5 · 8 ^{55/64} ”x8 ^{55/64} ”)	30	Monza 22 (22,5x22,5 · 8 ^{55/64} ”x8 ^{55/64} ”)	58	Vicenza 22 (22,5x22,5 · 8 ^{55/64} ”x8 ^{55/64} ”)	72
Cosenza 22 (22,5x22,5 · 8 ^{55/64} ”x8 ^{55/64} ”)	32	N			
D		Novara 22 (22,5x22,5 · 8 ^{55/64} ”x8 ^{55/64} ”)	50		
Dortmund Hex (22,5x25,9 · 8 ^{55/64} ”x10 ^{13/64} ”)	76	O			
E		Odesa Hex (22,5x25,9 · 8 ^{55/64} ”x10 ^{13/64} ”)	90		
Essen Hex (22,5x25,9 · 8 ^{55/64} ”x10 ^{13/64} ”)	78	Orión 22 (22,5x22,5 · 8 ^{55/64} ”x8 ^{55/64} ”)	52		



MILÁN 22 BLANCO



BLANCO 22, GRIS 22, PERLA 22 & NEGRO 22



ANDRIA 22 GRIS & TRANI 22 GRIS



AROSA HEX GRIS

PORCELÁNICO (Pavimento/Revestimiento)

22,5x22,5cm · 8^{55/64}"x8^{55/64}"		GOYA 22	38	VICENZA 22	72
ANDRIA 22	06	LIVORNO 22	40		
APRICA 22	08	MESINA 22	42	HEXÁGONO // 22,5x25,9cm · 8^{55/64}"x10^{13/64}"	
AREZZO 22	10	MILÁN 22	44	AROSA HEX	74
BLANCO VINTAGE 22	12	MONOCOLORES 22	46	DORTMUND HEX	76
BOLONIA 22	14	MONZA 22	48	ESSEN HEX	78
BOTTICELLI 22	16	NOVARA 22	50	GINEBRA HEX	80
BRESCIA 22	18	ORIÓN 22	52	LIEJA HEX	82
BRIANZA 22	20	PALERMO 22	54	LUGANO HEX	84
BRINDISI 22	22	PAVIA 22	56	MALINAS HEX	86
CAGLIARI 22	24	RÁVENA 22	58	MONOCOLORES HEX	88
CALABRIA 22	26	RÍMINI 22	60	ODESA HEX	90
CARPI 22	28	TRANI 22	62	RÓTERDAM HEX	92
CASERTA 22	30	TRENTO 22	64	SPLIT HEX	94
COSENZA 22	32	UDINE 22	66		
FIDENSA 22	34	URBINO 22	68	14,8x29,5cm · 5^{53/64}"x11^{39/64}"	
GÉNOVA 22	36	VARESE 22	70	CALABRIA 153	28

Serie ANDRIA 22,5 x 22,5 cm



CERLAT

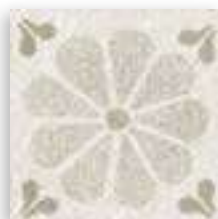
Porcelánico Esmaltado / Glazed Porcelain / Grès Cérame Émaillé Bla
 18 Piezas diferentes / 18 Different pieces / 18 Pièces différents



Andria 22 Beige



9mm PEI IV



Andria 22 Ceniza



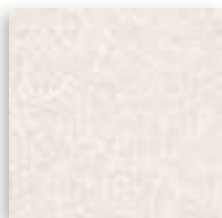
9mm PEI IV



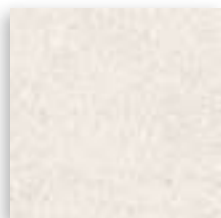
Andria 22 Gris



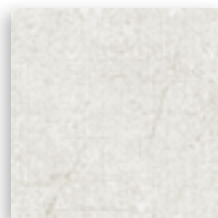
9mm PEI IV



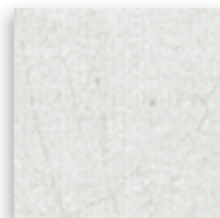
Trani 22 Beige



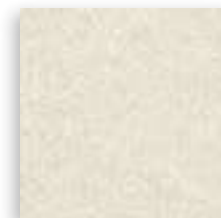
9mm PEI IV



Trani 22 Ceniza



9mm PEI IV



Trani 22 Gris



9mm PEI IV



ANDRIA 22 GRIS & TRANI 22 GRIS

Packing				CAJAS BOXES / BOITES			PALLETES PALLETS / PALETTE		
FAMILIA FAMILY	FORMATO FORMAT	PZAS PCS	PESO (KG) WEIGHT / POIDS	m2 SQM	CAJAS BOXES / BOITES	PESO (KG) WEIGHT / POIDS	m2 SQM		
PV.PC.	22,5 x 22,5	20	20,20	1,01	72	1.471	72,72		



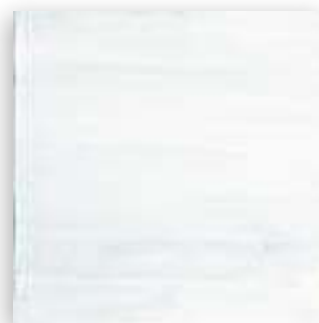
Serie APRICA 22,5 x 22,5 cm

Porcelánico Esmaltado / Glazed Porcelain / Grès Cérame Émaillé Bla

CERLAT



Aprica 22 Azul  



Aprica 22 Blanco  



Aprica 22 Acuarela
22 Piezas diferentes / 22 Different pieces / 22 Pièces différents

Packing		CAJAS BOXES / BOITES			PALLETES PALLETS / PALETTE		
FAMILIA FAMILY	FORMATO FORMAT	PZAS PCS	PESO (KG) WEIGHT / POIDS	m2 SQM	CAJAS BOXES / BOITES	PESO (KG) WEIGHT / POIDS	m2 SQM
PV.PC.	22,5 x 22,5	20	20,20	1,01	72	1.471	72,72



Serie AREZZO 22,5 x 22,5 cm



CERLAT

Porcelánico Esmaltado / Glazed Porcelain / Grès Cérame Émaillé Bla
 36 Piezas diferentes / 36 Different pieces / 36 Pièces différents



Arezzo 22 Beige 9mm PEI IV



Arezzo 22 Perla 9mm PEI IV



Arezzo 22 Taupe 9mm PEI IV



Arezzo 22 Gris 9mm PEI IV



AREZZO 22 GRIS

Packing		CAJAS BOXES / BOITES			PALLETES PALLETS / PALETTE		
FAMILIA FAMILY	FORMATO FORMAT	PZAS PCS	PESO (KG) WEIGHT / POIDS	m2 SQM	CAJAS BOXES / BOITES	PESO (KG) WEIGHT / POIDS	m2 SQM
PV.PC.	22,5 x 22,5	20	20,20	1,01	72	1.471	72,72



Serie BLANCO VINTAGE 22,5 x 22,5 cm



CERLAT

Porcelánico Esmaltado / Glazed Porcelain / Grès Cérame Émaillé Bla



Blanco 22 Vintage



9mm PEI IV

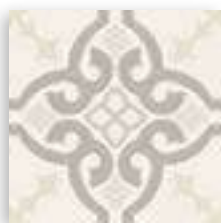
Packing				CAJAS BOXES / BOITES			PALLETES PALLETS / PALETTE		
FAMILIA FAMILY	FORMATO FORMAT	PZAS PCS	PESO (KG) WEIGHT / POIDS	m2 SQM	CAJAS BOXES / BOITES	PESO (KG) WEIGHT / POIDS	m2 SQM		
PV.PC.	22,5 x 22,5	20	20,20	1,01	72	1.471	72,72		



Serie BOLONIA 22,5 x 22,5 cm

Porcelánico Esmaltado / Glazed Porcelain / Grès Cérame Émaillé Bla

CERLAT



Bolonia 22 Beige
9mm PEI IV



Bolonia 22 Beige Cenefa
9mm PEI IV



Bolonia 22 Beige Esquina
9mm PEI IV



Bolonia 22 Gris
9mm PEI IV



Bolonia 22 Gris Cenefa
9mm PEI IV



Bolonia 22 Gris Esquina
9mm PEI IV



Bolonia 22 Azul
9mm PEI IV



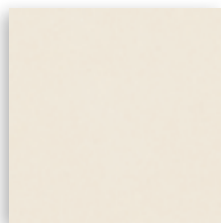
Bolonia 22 Azul Cenefa
9mm PEI IV



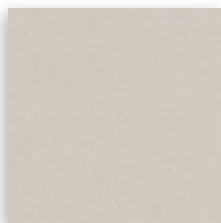
Bolonia 22 Azul Esquina
9mm PEI IV



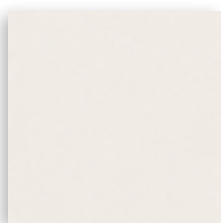
BOLONIA 22 GRIS, NOVARA 22 GRIS & NOVARA 22 PERLA



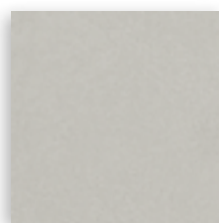
Novara 22 Beige
9mm PEI IV



Novara 22 Taupe
9mm PEI IV



Novara 22 Perla
9mm PEI IV



Novara 22 Gris
9mm PEI IV

Pavimento Coordinado / Matching Floor Tiles / Dalle de Sol Coordiné

Brescia 22 Esquina · 22,5x22,5 cm

Página 18

Brescia 22 Cenefa · 22,5x22,5 cm

Página 18

Packing

FAMILIA FAMILY	FORMATO FORMAT	CAJAS BOXES / BOITES	PESO (KG) WEIGHT / POIDS	m2 SQM	PALLETES PALLETS / PALETTE	PESO (KG) WEIGHT / POIDS	m2 SQM
PV.PC.	22,5 x 22,5	PZAS PCS 20	20,20	1,01	CAJAS BOXES / BOITES 72	1.471	72,72



Serie BOTTICELLI 22,5 x 22,5 cm



CERLAT

Porcelánico Esmaltado / Glazed Porcelain / Grès Cérame Émaillé Bla
 30 Piezas diferentes / 30 Different pieces / 30 Pièces différents



Botticelli 22

9mm PEIV



BOTTICELLI 22 & RENNES GRIS

Packing				CAJAS BOXES / BOITES			PALLETES PALLETS / PALETTE		
FAMILIA FAMILY	FORMATO FORMAT	PZAS PCS	PESO (KG) WEIGHT / POIDS	m2 SQM	CAJAS BOXES / BOITES	PESO (KG) WEIGHT / POIDS	m2 SQM		
PV.PC.	22,5 x 22,5	20	20,20	1,01	72	1.471	72,72		



Serie BRESCIA 22,5 x 22,5 cm

Porcelánico Esmaltado / Glazed Porcelain / Grès Cérame Émaillé Bla

CERLAT



Brescia 22 Beige
9mm PEI IV



Brescia 22 Beige Cenefa
9mm PEI IV



Brescia 22 Beige Esquina
9mm PEI IV



Brescia 22 Gris
9mm PEI IV



Brescia 22 Gris Cenefa
9mm PEI IV



Brescia 22 Gris Esquina
9mm PEI IV



Brescia 22 Azul
9mm PEI IV



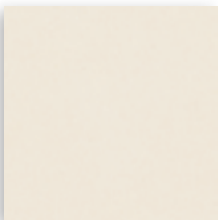
Brescia 22 Azul Cenefa
9mm PEI IV



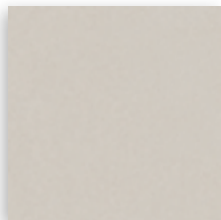
Brescia 22 Azul Esquina
9mm PEI IV



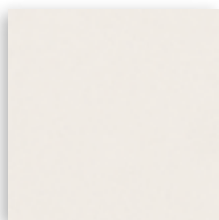
BRESCIA 22 BEIGE, NOVARA 22 BEIGE & NOVARA 22 TAUPE



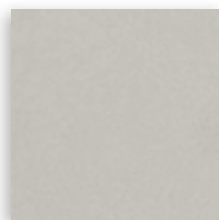
Novara 22 Beige
9mm PEI IV



Novara 22 Taupe
9mm PEI IV



Novara 22 Perla
9mm PEI IV



Novara 22 Gris
9mm PEI IV

Pavimento Coordinado / Matching Floor Tiles / Dalle de Sol Coordiné

Bolonia 22 Esquina · 22,5x22,5 cm

Página 14

Bolonia 22 Cenefa · 22,5x22,5 cm

Página 14

Packing		CAJAS BOXES / BOITES			PALLETES PALLETS / PALETTE		
FAMILIA FAMILY	FORMATO FORMAT	PZAS PCS	PESO (KG) WEIGHT / POIDS	m2 SQM	CAJAS BOXES / BOITES	PESO (KG) WEIGHT / POIDS	m2 SQM
PV.PC.	22,5 x 22,5	20	20,20	1,01	72	1.471	72,72



Serie BRIANZA 22,5 x 22,5 cm



CERLAT

Porcelánico Esmaltado / Glazed Porcelain / Grès Cérame Émaillé Bla
 8 Piezas diferentes / 8 Different pieces / 8 Pièces différents






Brianza 22 Mix  9mm PELV



BRIANZA 22 MIX & MONZA 22 MIX

Packing	FAMILIA FAMILY		FORMATO FORMAT		CAJAS BOXES / BOITES			PALLETS PALLETS / PALETTE		
	IPV.PC.	22,5 x 22,5	PZAS PCS	20	PESO (KG) WEIGHT / POIDS	m2 SQM	1,01	CAJAS BOXES / BOITES	PESO (KG) WEIGHT / POIDS	m2 SQM
								72	1.471	72,72



Serie **BRINDISI** 22,5 x 22,5 cm   

CERLAT

Porcelánico Esmaltado / Glazed Porcelain / Grès Cérame Émaillé Bla



Brindisi 22 Azul

 9mm PEI V



Brindisi 22 Gris

 9mm PEI V

Packing				CAJAS BOXES / BOITES			PALLETS PALLETS / PALETTE		
FAMILIA FAMILY	FORMATO FORMAT	PZAS PCS	PESO (KG) WEIGHT / POIDS	m2 SQM	CAJAS BOXES / BOITES	PESO (KG) WEIGHT / POIDS	m2 SQM		
PV.PC.	22,5 x 22,5	20	20,20	1,01	72	1.471	72,72		



Serie **CAGLIARI** 22,5 x 22,5 cm



CERLAT

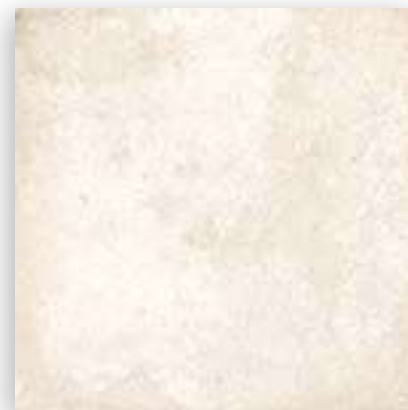
Porcelánico Esmaltado / Glazed Porcelain / Grès Cérame Émaillé Bla



Cagliari 22 Gris



Cagliari 22 Azul



Urbino 22 Natural



Packing				CAJAS BOXES / BOITES			PALLETES PALLETS / PALETTE		
FAMILIA FAMILY	FORMATO FORMAT	PZAS PCS	PESO (KG) WEIGHT / POIDS	m2 SQM	CAJAS BOXES / BOITES	PESO (KG) WEIGHT / POIDS	m2 SQM		
PV.PC.	22,5 x 22,5	20	20,20	1,01	72	1.471	72,72		



Serie CALABRIA 22,5 x 22,5 cm

Porcelánico Esmaltado / Glazed Porcelain / Grès Cérame Émaillé Bla



CERLAT



Calabria 22 Beige
9mm PEIV



Calabria 22 Taupe
9mm PEIV



Calabria 22 Gris
9mm PEIV

Serie CALABRIA 14,8 x 29,5 cm

Porcelánico Esmaltado / Glazed Porcelain / Grès Cérame Émaillé Bla



Calabria 153 Beige
3,7mm PEIV



Calabria 153 Taupe
3,7mm PEIV







Calabria 153 Gris
3,7mm PEIV



CALABRIA 22 BEIGE & CALABRIA 153 BEIGE

Packing	FAMILIA FAMILY		FORMATO FORMAT		CAJAS BOXES / BOITES			PALLETES PALLETS / PALETTE		
	PV.PC.	FV.PC.	22,5 x 22,5	14,8 x 29,5	PZAS PCS	PESO (KG) WEIGHT / POIDS	m2 SQM	CAJAS BOXES / BOITES	PESO (KG) WEIGHT / POIDS	m2 SQM
					20	20,20	1,01	72	1.471	72,72
					20	17,40	0,87	80	1.409	69,60



Serie **CARPI** 22,5 x 22,5 cm    

CERLAT

Porcelánico Esmaltado / Glazed Porcelain / Grès Cérame Émaillé Bla



Carpi 22 Perla

 9mm PEI IV



Carpi 22 Gris

 9mm PEI IV

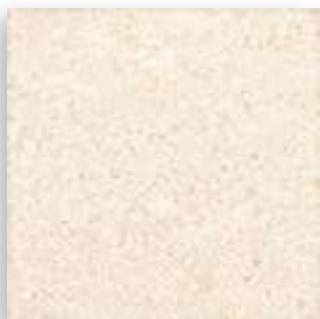
Packing				CAJAS BOXES / BOITES			PALLETS PALLETS / PALETTE		
FAMILIA FAMILY	FORMATO FORMAT	PZAS PCS	PESO (KG) WEIGHT / POIDS	m2 SQM	CAJAS BOXES / BOITES	PESO (KG) WEIGHT / POIDS	m2 SQM		
PV.PC.	22,5 x 22,5	20	20,20	1,01	72	1.471	72,72		



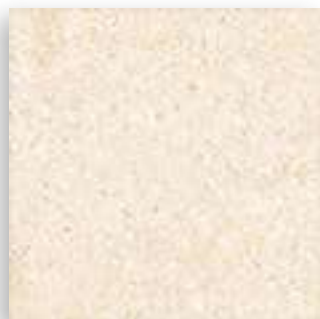
Serie CASERTA 22,5 x 22,5 cm

Porcelánico Esmaltado / Glazed Porcelain / Grès Cérame Émaillé Bla

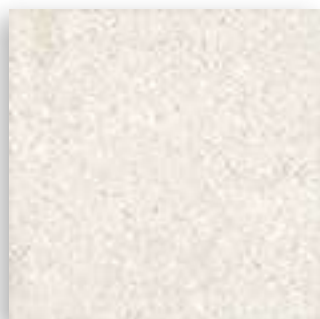
CERLAT



Caserta 22 Beige 



Caserta 22 Gris 



CASERTA 22 GRIS & UDINE 22 GRIS

Packing		CAJAS BOXES / BOITES			PALLETES PALLETS / PALETTE		
FAMILIA FAMILY	FORMATO FORMAT	PZAS PCS	PESO (KG) WEIGHT / POIDS	m2 SQM	CAJAS BOXES / BOITES	PESO (KG) WEIGHT / POIDS	m2 SQM
PV.PC.	22,5 x 22,5	20	20,20	1,01	72	1.471	72,72



Serie COSENZA 22,5 x 22,5 cm

Porcelánico Esmaltado / Glazed Porcelain / Grès Cérame Émaillé Bla

CERLAT



Cosenza 22 Azul BN 



Cosenza 22 Gris BN 



COSENZA 22 GRIS & BURDEOS ROBLE

Packing				CAJAS BOXES / BOITES			PALLETES PALLETS / PALETTE		
FAMILIA FAMILY	FORMATO FORMAT	PZAS PCS	PESO (KG) WEIGHT / POIDS	m2 SQM	CAJAS BOXES / BOITES	PESO (KG) WEIGHT / POIDS	m2 SQM		
PV.PC.	22,5 x 22,5	20	20,20	1,01	72	1.471	72,72		



Serie FIDENSA 22,5 x 22,5 cm



CERLAT

Porcelánico Esmaltado / Glazed Porcelain / Grès Cérame Émaillé Bla



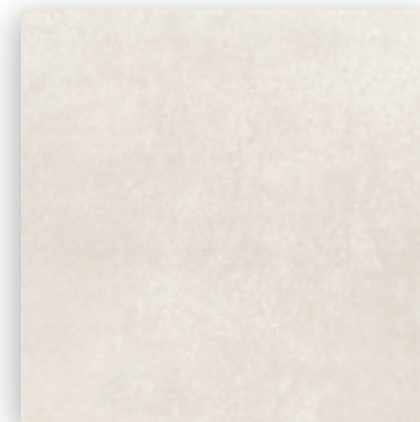
Fidensa 22 Azul



Fidensa 22 Gris



Carpi 22 Gris



Carpi 22 Perla



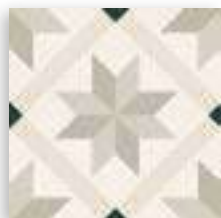
Packing				CAJAS BOXES / BOITES			PALLETES PALLETS / PALETTE		
FAMILIA FAMILY	FORMATO FORMAT	PZAS PCS	PESO (KG) WEIGHT / POIDS	m2 SQM	CAJAS BOXES / BOITES	PESO (KG) WEIGHT / POIDS	m2 SQM		
PV.PC.	22,5 x 22,5	20	20,20	1,01	72	1.471	72,72		



Serie GÉNOVA 22,5 x 22,5 cm

Porcelánico Esmaltado / Glazed Porcelain / Grès Cérame Émaillé Bla

CERLAT



Génova 22 Beige

9mm PEI IV



Génova 22 Cobalto

9mm PEI IV



Génova 22 Gris

9mm PEI IV



Génova 22 Bea

9mm PEI IV



Génova 22 Azul

9mm PEI IV

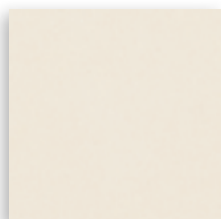


Génova 22 Marrón

9mm PEI IV

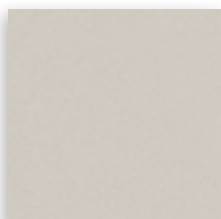


GÉNOVA 22 BEIGE, NOVARA 22 BEIGE & NOVARA 22 TAUPE



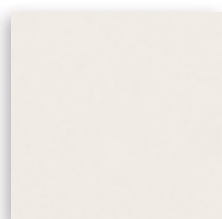
Novara 22 Beige

9mm PEI IV



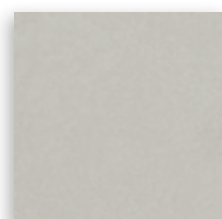
Novara 22 Taupe

9mm PEI IV



Novara 22 Perla

9mm PEI IV



Novara 22 Gris

9mm PEI IV

Pavimento Coordinado / Matching Floor Tiles / Dalle de Sol Coordiné

Bolonia 22 Esquina · 22,5x22,5 cm Página 14


Bolonia 22 Cenefa · 22,5x22,5 cm Página 14

Brescia 22 Esquina · 22,5x22,5 cm Página 18

Brescia 22 Cenefa · 22,5x22,5 cm Página 18

Packing		CAJAS BOXES / BOITES			PALLETES PALLETS / PALETTE		
FAMILIA FAMILY	FORMATO FORMAT	PZAS PCS	PESO (KG) WEIGHT / POIDS	m2 SQM	CAJAS BOXES / BOITES	PESO (KG) WEIGHT / POIDS	m2 SQM
PV.PC.	22,5 x 22,5	20	20,20	1,01	72	1.471	72,72



Serie GOYA 22,5 x 22,5 cm 

CERLAT

Porcelánico Esmaltado / Glazed Porcelain / Grès Cérame Émaillé Bla
 34 Piezas difeentes / 34 Different pieces / 34 Pièces différents



GOYA 22 & ATENAS 364 GRIS

Goya 22

 9mm PEI IV

Packing				CAJAS BOXES / BOITES			PALLETES PALLETS / PALETTE		
FAMILIA FAMILY	FORMATO FORMAT	PZAS PCS	PESO (KG) WEIGHT / POIDS	m2 SQM	CAJAS BOXES / BOITES	PESO (KG) WEIGHT / POIDS	m2 SQM		
PV.PC.	22,5 x 22,5	20	20,20	1,01	72	1.471	72,72		



Serie LIVORNO 22,5 x 22,5 cm

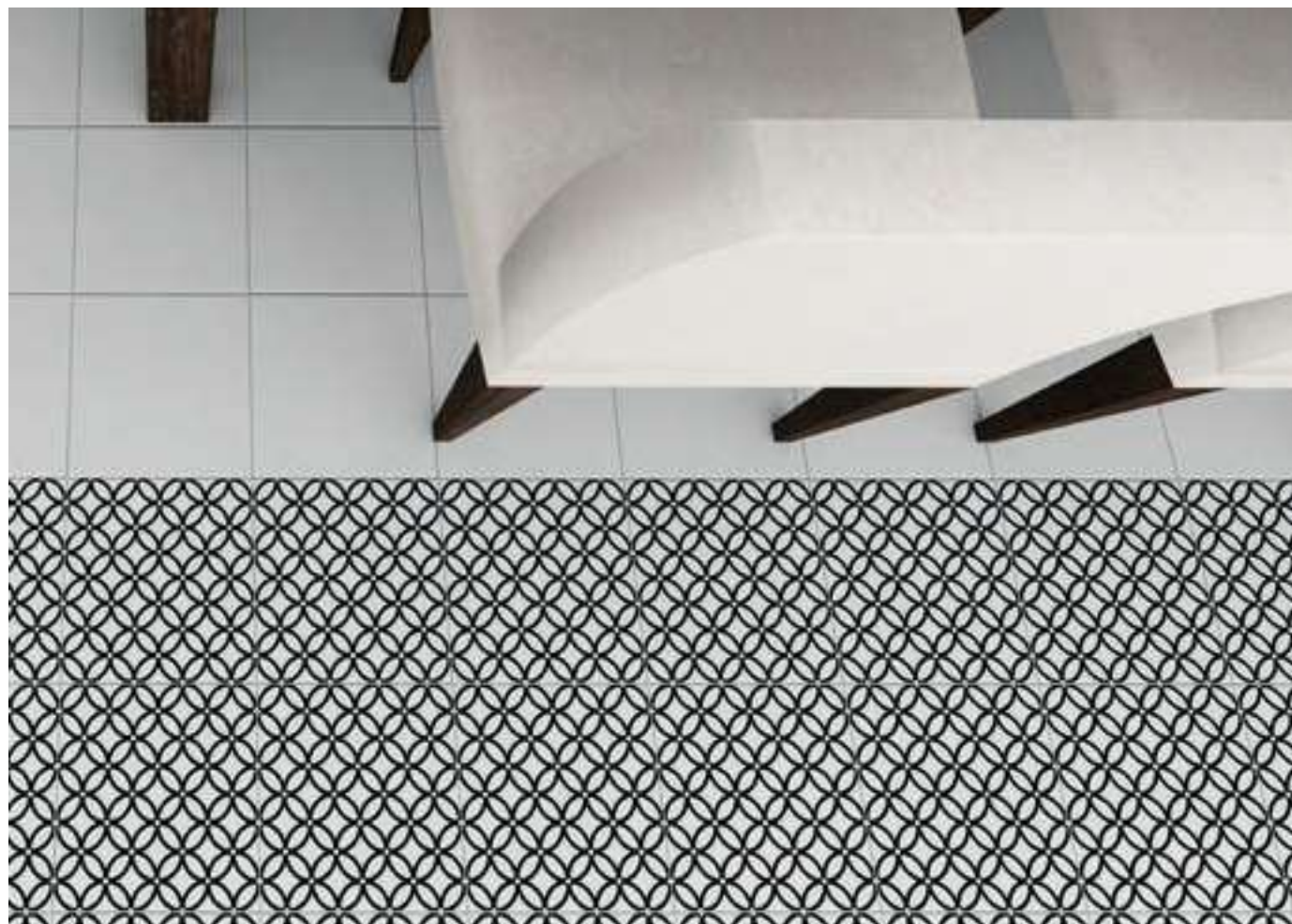
Porcelánico Esmaltado / Glazed Porcelain / Grès Cérame Émaillé Bla

CERLAT



Livorno 22

9mm PEI IV



LIVORNO 22 & NOVARA 22 PERLA

Packing				CAJAS BOXES / BOITES			PALLETES PALLETS / PALETTE		
FAMILIA FAMILY	FORMATO FORMAT	PZAS PCS	PESO (KG) WEIGHT / POIDS	m2 SQM	CAJAS BOXES / BOITES	PESO (KG) WEIGHT / POIDS	m2 SQM		
PV.PC.	22,5 x 22,5	20	20,20	1,01	72	1.471	72,72		



Serie **MESINA** 22,5 x 22,5 cm



Porcelánico Esmaltado / Glazed Porcelain / Grès Cérame Émaillé Bla

CERLAT



Mesina 22 Gris



Mesina 22 Azul



Urbino 22 Natural



Packing				CAJAS BOXES / BOITES			PALLETES PALLETS / PALETTE		
FAMILIA FAMILY	FORMATO FORMAT	PZAS PCS	PESO (KG) WEIGHT / POIDS	m2 SQM	CAJAS BOXES / BOITES	PESO (KG) WEIGHT / POIDS	m2 SQM		
PV.PC.	22,5 x 22,5	20	20,20	1,01	72	1.471	72,72		



Serie MILÁN 22,5 x 22,5 cm



CERLAT

Porcelánico Esmaltado / Glazed Porcelain / Grès Cérame Émaillé Bla
 34 Piezas difeentes / 34 Different pieces / 34 Pièces différents



Milán 22 Blanco



MILÁN 22 BLANCO

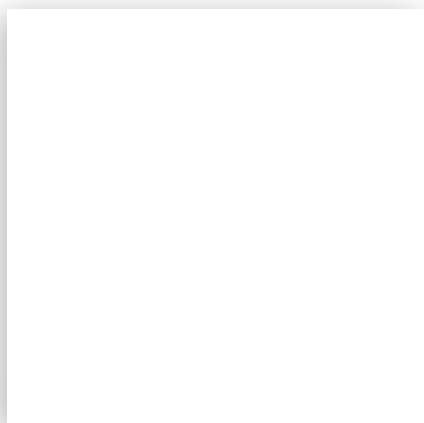
Packing		CAJAS BOXES / BOITES			PALLETES PALLETS / PALETTE		
FAMILIA FAMILY	FORMATO FORMAT	PZAS PCS	PESO (KG) WEIGHT / POIDS	m2 SQM	CAJAS BOXES / BOITES	PESO (KG) WEIGHT / POIDS	m2 SQM
PV.PC.	22,5 x 22,5	20	20,20	1,01	72	1.471	72,72



Serie MONOCOLORES 22,5 x 22,5 cm

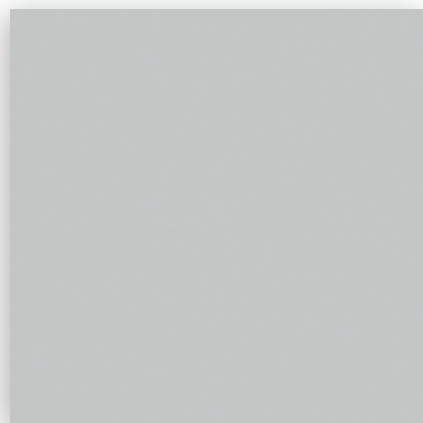
Porcelánico Esmaltado / Glazed Porcelain / Grès Cérame Émaillé Bla

CERLAT



Blanco 22

9mm PEIV



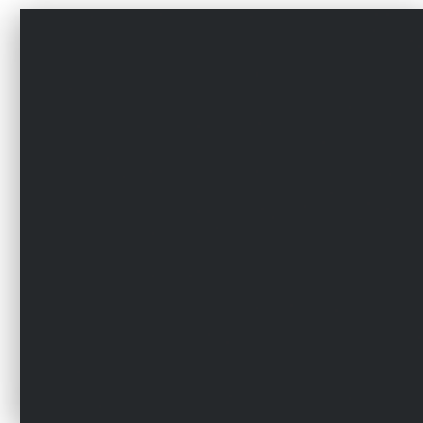
Perla 22

9mm PEIV



Gris 22

9mm PEIII



Negro 22

9mm PEIII

Packing		CAJAS BOXES / BOITES			PALLETS PALLETS / PALETTE		
FAMILIA FAMILY	FORMATO FORMAT	PZAS PCS	PESO (KG) WEIGHT / POIDS	m2 SQM	CAJAS BOXES / BOITES	PESO (KG) WEIGHT / POIDS	m2 SQM
PV.PC.	22,5 x 22,5	20	20,20	1,01	72	1.471	72,72

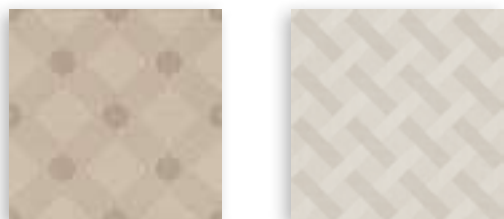
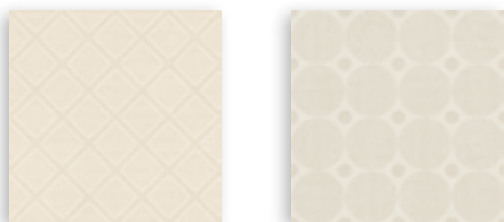


Serie MONZA 22,5 x 22,5 cm



CERLAT

Porcelánico Esmaltado / Glazed Porcelain / Grès Cérame Émaillé Bla
 72 Piezas diferentes / 72 Different pieces / 72 Pièces différents



Monza 22 Mix



Brianza 22 Mix



MONZA 22 MIX & BRIANZA 22 MIX

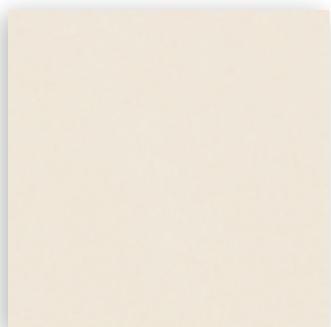
Packing				CAJAS BOXES / BOITES			PALLETES PALLETS / PALETTE		
FAMILIA FAMILY	FORMATO FORMAT	PZAS PCS	PESO (KG) WEIGHT / POIDS	m2 SQM	CAJAS BOXES / BOITES	PESO (KG) WEIGHT / POIDS	m2 SQM		
PV.PC.	22,5 x 22,5	20	20,20	1,01	72	1.471	72,72		



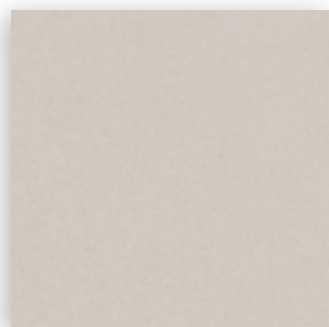
Serie NOVARA 22,5 x 22,5 cm

Porcelánico Esmaltado / Glazed Porcelain / Grès Cérame Émaillé Bla

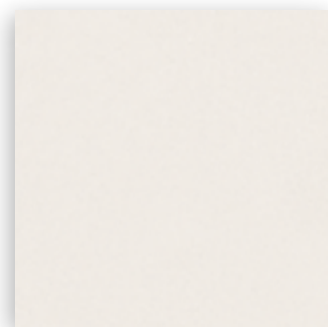
CERLAT



Novara 22 Beige 



Novara 22 Taupe 



Novara 22 Perla 



Novara 22 Gris 



GÉNOVA 22 BEIGE, NOVARA 22 BEIGE & NOVARA 22 TAUPE



BRESCIA 22 BEIGE & NOVARA 22 TAUPE

Packing				CAJAS BOXES / BOITES			PALLETES PALLETS / PALETTE		
FAMILIA FAMILY	FORMATO FORMAT	PZAS PCS	PESO (KG) WEIGHT / POIDS	m2 SQM	CAJAS BOXES / BOITES	PESO (KG) WEIGHT / POIDS	m2 SQM		
PV.PC.	22,5 x 22,5	20	20,20	1,01	72	1.471	72,72		



Serie ORION 22,5 x 22,5 cm

Porcelánico Esmaltado / Glazed Porcelain / Grès Cérame Émaillé Bla

CERLAT



Orion 22 Azul 



Orion 22 Granate 



Orion 22 Negro 



Orion 22 Verde 



Blanco 22 Vintage





Packing				CAJAS BOXES / BOITES			PALLETES PALLETS / PALETTE		
FAMILIA FAMILY	FORMATO FORMAT	PZAS PCS	PESO (KG) WEIGHT / POIDS	m2 SQM	CAJAS BOXES / BOITES	PESO (KG) WEIGHT / POIDS	m2 SQM		
PV.PC.	22,5 x 22,5	20	20,20	1,01	72	1.471	72,72		



Serie PALERMO 22,5 x 22,5 cm

Porcelánico Esmaltado / Glazed Porcelain / Grès Cérame Émaillé Bla

CERLAT



Palermo 22 Beige 9mm PEI IV



Palermo 22 Bea 9mm PEI IV



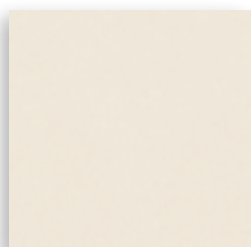
Palermo 22 Azul 9mm PEI IV



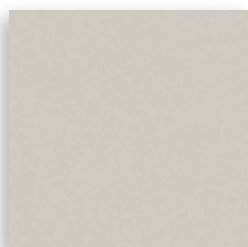
Palermo 22 Gris 9mm PEI IV



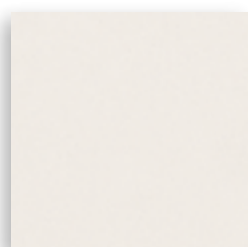
PALERMO 22 GRIS



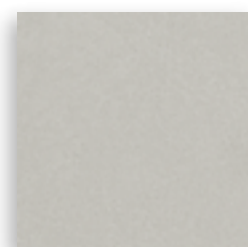
Novara 22 Beige 9mm PEI IV



Novara 22 Taupe 9mm PEI IV



Novara 22 Perla 9mm PEI IV



Novara 22 Gris 9mm PEI IV

Pavimento Coordinado / Matching Floor Tiles / Dalle de Sol Coordiné

- Bolonia 22 Esquina · 22,5x22,5 cm Página 14
- Bolonia 22 Cenefa · 22,5x22,5 cm Página 14
- Brescia 22 Esquina · 22,5x22,5 cm Página 18
- Brescia 22 Cenefa · 22,5x22,5 cm Página 18

Packing				CAJAS BOXES / BOITES			PALLETES PALLETS / PALETTE		
FAMILIA FAMILY	FORMATO FORMAT	PZAS PCS	PESO (KG) WEIGHT / POIDS	m2 SQM	CAJAS BOXES / BOITES	PESO (KG) WEIGHT / POIDS	m2 SQM		
PV.PC.	22,5 x 22,5	20	20,20	1,01	72	1.471	72,72		



Serie PAVIA 22,5 x 22,5 cm

Porcelánico Esmaltado / Glazed Porcelain / Grès Cérame Émaillé Bla

CERLAT



Pavia 22 Gris



3mm PEI V



PAVIA 22 GRIS & VICENZA 22 GRIS



PAVIA 22 GRIS, VICENZA 22 GRIS & SIRACUSA 60 GRIS

Packing				CAJAS BOXES / BOITES			PALLETES PALLETS / PALETTE		
FAMILIA FAMILY	FORMATO FORMAT	PZAS PCS	PESO (KG) WEIGHT / POIDS	m2 SQM	CAJAS BOXES / BOITES	PESO (KG) WEIGHT / POIDS	m2 SQM		
PV.PC.	22,5 x 22,5	20	20,20	1,01	72	1.471	72,72		



Serie RÁVENA 22,5 x 22,5 cm



CERLAT

Porcelánico Esmaltado / Glazed Porcelain / Grès Cérame Émaillé Bla



Rávena 22 Azul  



Rávena 22 Gris 



Rávena 22 Teja 



Urbino 22 Natural





Packing		CAJAS BOXES / BOITES			PALLETES PALLETS / PALETTE		
FAMILIA FAMILY	FORMATO FORMAT	PZAS PCS	PESO (KG) WEIGHT / POIDS	m2 SQM	CAJAS BOXES / BOITES	PESO (KG) WEIGHT / POIDS	m2 SQM
PV.PC.	22,5 x 22,5	20	20,20	1,01	72	1.471	72,72



Serie RÍMINI 22,5 x 22,5 cm

Porcelánico Esmaltado / Glazed Porcelain / Grès Cérame Émaillé Bla

CERLAT



Rímini 22 Perla 



Rímini 22 Gris 



Pavia 22 Gris 



RÍMINI 22 PERLA & PAVIA 22 GRIS

Packing				CAJAS BOXES / BOITES			PALLETS PALLETS / PALETTE		
FAMILIA FAMILY	FORMATO FORMAT	PZAS PCS	PESO (KG) WEIGHT / POIDS	m2 SQM	CAJAS BOXES / BOITES	PESO (KG) WEIGHT / POIDS	m2 SQM		
PV.PC.	22,5 x 22,5	20	20,20	1,01	72	1.471	72,72		

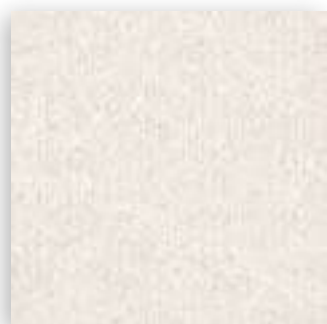


Serie **TRANI** 22,5 x 22,5 cm



CERLAT

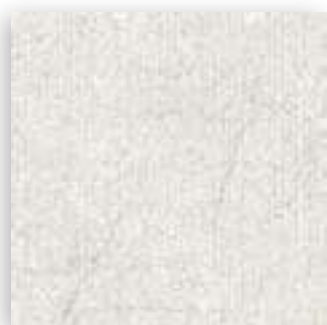
Porcelánico Esmaltado / Glazed Porcelain / Grès Cérame Émaillé Bla



Trani 22 Beige



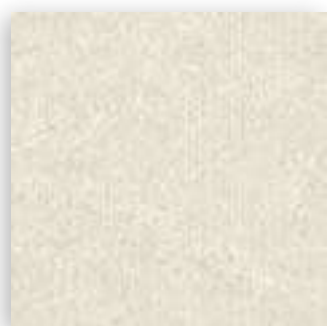
9mm PEIIV



Trani 22 Ceniza



9mm PEIIV



Trani 22 Gris



9mm PEIIV



TRANI 22 GRIS & ANDRIA 22 GRIS

Packing		CAJAS BOXES / BOITES			PALLETES PALLETS / PALETTE		
FAMILIA FAMILY	FORMATO FORMAT	PZAS PCS	PESO (KG) WEIGHT / POIDS	m2 SQM	CAJAS BOXES / BOITES	PESO (KG) WEIGHT / POIDS	m2 SQM
PV.PC.	22,5 x 22,5	20	20,20	1,01	72	1.471	72,72



Serie TRENTO 22,5 x 22,5 cm

Porcelánico Esmaltado / Glazed Porcelain / Grès Cérame Émaillé Bla

CERLAT



Trento 22 Geo Beige
20 Piezas diferentes / 20 Different pieces / 20 Pièces différents



Trento 22 Geo Gris
20 Piezas diferentes / 20 Different pieces / 20 Pièces différents



Trento 22 Bone 9mm PEI IV
SUAVE



Trento 22 Beige 9mm PEI IV
SUAVE



Trento 22 Perla 9mm PEI IV
SUAVE



Trento 22 Gris 9mm PEI IV
SUAVE

Packing				CAJAS BOXES / BOITES			PALLETES PALLETS / PALETTE		
FAMILIA FAMILY	FORMATO FORMAT	PZAS PCS	PESO (KG) WEIGHT / POIDS	m2 SQM	CAJAS BOXES / BOITES	PESO (KG) WEIGHT / POIDS	m2 SQM		
PV.PC.	22,5 x 22,5	20	20,20	1,01	72	1.471	72,72		

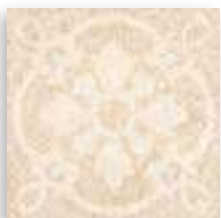


Serie UDINE 22,5 x 22,5 cm



CERLAT

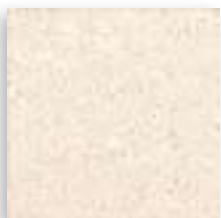
Porcelánico Esmaltado / Glazed Porcelain / Grès Cérame Émaillé Bla
 21 Piezas diferentes / 21 Different pieces / 21 Pièces différents



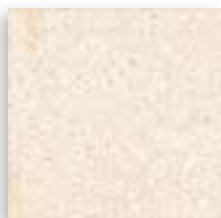
Udine 22 Beige



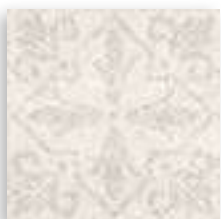
9mm PEI IV



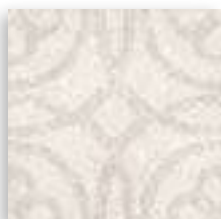
Caserta 22 Beige



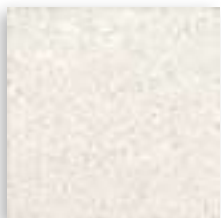
9mm PEI IV



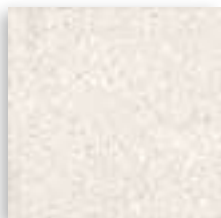
Udine 22 Gris



9mm PEI IV



Caserta 22 Gris



9mm PEI IV



UDINE 22 GRIS & CASERTA 22 GRIS

Packing		CAJAS BOXES / BOITES			PALLETES PALLETS / PALETTE		
FAMILIA FAMILY	FORMATO FORMAT	PZAS PCS	PESO (KG) WEIGHT / POIDS	m2 SQM	CAJAS BOXES / BOITES	PESO (KG) WEIGHT / POIDS	m2 SQM
PV.PC.	22,5 x 22,5	20	20,20	1,01	72	1.471	72,72



Serie URBINO 22,5 x 22,5 cm



CERLAT

Porcelánico Esmaltado / Glazed Porcelain / Grès Cérame Émaillé Bla



Urbino 22 Natural



3mm PEIV

Packing				CAJAS BOXES / BOITES			PALLETS PALLETS / PALETTE		
FAMILIA FAMILY	FORMATO FORMAT	PZAS PCS	PESO (KG) WEIGHT / POIDS	m2 SQM	CAJAS BOXES / BOITES	PESO (KG) WEIGHT / POIDS	m2 SQM		
PV.PC.	22,5 x 22,5	20	20,20	1,01	72	1.471	72,72		



Serie VARESE 22,5 x 22,5 cm



CERLAT

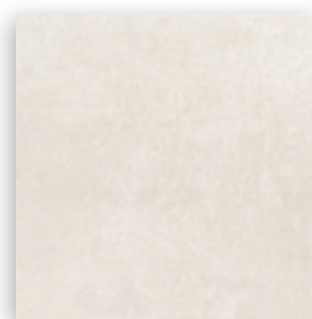
Porcelánico Esmaltado / Glazed Porcelain / Grès Cérame Émaillé Bla
 24 Piezas diferentes / 24 Different pieces / 24 Pièces différents



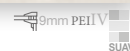
Varese 22 Azul



Varese 22 Gris



Carpi 22 Perla



Carpi 22 Gris



Packing				CAJAS BOXES / BOITES			PALLETES PALLETS / PALETTE		
FAMILIA FAMILY	FORMATO FORMAT	PZAS PCS	PESO (KG) WEIGHT / POIDS	m2 SQM	CAJAS BOXES / BOITES	PESO (KG) WEIGHT / POIDS	m2 SQM		
PV.PC.	22,5 x 22,5	20	20,20	1,01	72	1.471	72,72		



Serie VICENZA 22,5 x 22,5 cm



CERLAT

Porcelánico Esmaltado / Glazed Porcelain / Grès Cérame Émaillé Bla
 60 Piezas diferentes / 60 Different pieces / 60 Pièces différents



Vicenza 22 Gris



Pavia 22 Gris



PAVIA 22 GRIS & VICENZA 22 GRIS

Packing		CAJAS BOXES / BOITES			PALLETES PALLETS / PALETTE		
FAMILIA FAMILY	FORMATO FORMAT	PZAS PCS	PESO (KG) WEIGHT / POIDS	m2 SQM	CAJAS BOXES / BOITES	PESO (KG) WEIGHT / POIDS	m2 SQM
PV.PC.	22,5 x 22,5	20	20,20	1,01	72	1.471	72,72



Serie AROSA HEX 22,5 x 25,9 cm

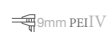
Porcelánico Esmaltado / Glazed Porcelain / Grès Cérame Émaillé Bla



CERLAT



Arosa Hex Beige



Arosa Hex Gris



Packing				CAJAS BOXES / BOITES			PALLETES PALLETS / PALETTE		
FAMILIA FAMILY	FORMATO FORMAT	PZAS PCS	PESO (KG) WEIGHT / POIDS	m2 SQM	CAJAS BOXES / BOITES	PESO (KG) WEIGHT / POIDS	m2 SQM		
PV.PC.	22,5 x 25,9	20	17,50	0,88	60	1.067	52,80		



Serie DORTMUND HEX 22,5 x 25,9 cm



CERLAT

Porcelánico Esmaltado / Glazed Porcelain / Grès Cérame Émaillé Bla
 14 Piezas diferentes / 14 Different pieces / 14 Pièces différents



Dortmund Hex 9mm PEI IV



Essen Hex 9mm PEI IV

Packing				CAJAS BOXES / BOITES			PALLETES PALLETS / PALETTE		
FAMILIA FAMILY	FORMATO FORMAT	PZAS PCS	PESO (KG) WEIGHT / POIDS	m2 SQM	CAJAS BOXES / BOITES	PESO (KG) WEIGHT / POIDS	m2 SQM		
PV.PC.	22,5 x 25,9	20	17,50	0,88	60	1.067	52,80		



Serie ESSEN HEX 22,5 x 25,9 cm



CERLAT

Porcelánico Esmaltado / Glazed Porcelain / Grès Cérame Émaillé Bla



Essen Hex 

Packing		CAJAS BOXES / BOITES			PALLETS PALLETS / PALETTE		
FAMILIA FAMILY	FORMATO FORMAT	PZAS PCS	PESO (KG) WEIGHT / POIDS	m2 SQM	CAJAS BOXES / BOITES	PESO (KG) WEIGHT / POIDS	m2 SQM
PV.PC.	22,5 x 25,9	20	17,50	0,88	60	1.067	52,80



Serie GINEBRA HEX 22,5 x 25,9 cm



CERLAT

Porcelánico Esmaltado / Glazed Porcelain / Grès Cérame Émaillé Bla
 27 Piezas diferentes / 27 Different pieces / 27 Pièces différents



Ginebra Hex Taupe  



Ginebra Hex Gris  



Róterdam Hex Taupe  



Róterdam Hex Gris  

Packing				CAJAS BOXES / BOITES			PALLETES PALLETS / PALETTE		
FAMILIA FAMILY	FORMATO FORMAT	PZAS PCS	PESO (KG) WEIGHT / POIDS	m2 SQM	CAJAS BOXES / BOITES	PESO (KG) WEIGHT / POIDS	m2 SQM		
PV.PC.	22,5 x 25,9	20	17,50	0,88	60	1.067	52,80		



Serie LIEJA HEX 22,5 x 25,9 cm



CERLAT

Porcelánico Esmaltado / Glazed Porcelain / Grès Cérame Émaillé Bla



Lieja Hex Bone 



Lieja Hex Taupe 



Lieja Hex Perla 



Lieja Hex Gris 

Packing				CAJAS BOXES / BOITES			PALLETES PALLETS / PALETTE		
FAMILIA FAMILY	FORMATO FORMAT	PZAS PCS	PESO (KG) WEIGHT / POIDS	m2 SQM	CAJAS BOXES / BOITES	PESO (KG) WEIGHT / POIDS	m2 SQM		
PV.PC.	22,5 x 25,9	20	17,50	0,88	60	1.067	52,80		



Serie LUGANO HEX 22,5 x 25,9 cm



CERLAT

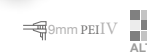
Porcelánico Esmaltado / Glazed Porcelain / Grès Cérame Émaillé Bla
 27 Piezas diferentes / 27 Different pieces / 27 Pièces différents



Lugano Hex Taupe



Lugano Hex Gris



Lieja Hex Bone



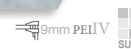
Lieja Hex Taupe



Lieja Hex Perla



Lieja Hex Gris



Packing

FAMILIA FAMILY	FORMATO FORMAT	CAJAS BOXES / BOITES	PESO (KG) WEIGHT / POIDS	m2 SQM	PALLETES PALLETS / PALETTE	PESO (KG) WEIGHT / POIDS	m2 SQM
PV.PC.	22,5 x 25,9	PZAS PCS 20	17,50	0,88	CAJAS BOXES / BOITES 60	1.067	52,80



Serie MALINAS HEX 22,5 x 25,9 cm

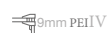
Porcelánico Esmaltado / Glazed Porcelain / Grès Cérame Émaillé Bla



CERLAT



Malinas Hex Beige



Malinas Hex Gris



Packing				CAJAS BOXES / BOITES			PALLETES PALLETS / PALETTE		
FAMILIA FAMILY	FORMATO FORMAT	PZAS PCS	PESO (KG) WEIGHT / POIDS	m2 SQM	CAJAS BOXES / BOITES	PESO (KG) WEIGHT / POIDS	m2 SQM		
PV.PC.	22,5 x 25,9	20	17,50	0,88	60	1.067	52,80		



Serie MONOCOLORES HEX 22,5 x 25,9 cm



CERLAT

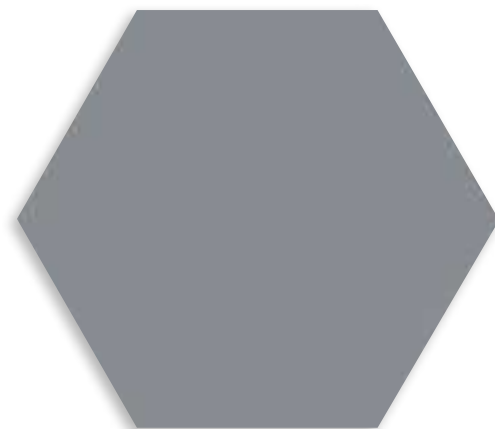
Porcelánico Esmaltado / Glazed Porcelain / Grès Cérame Émaillé Bla



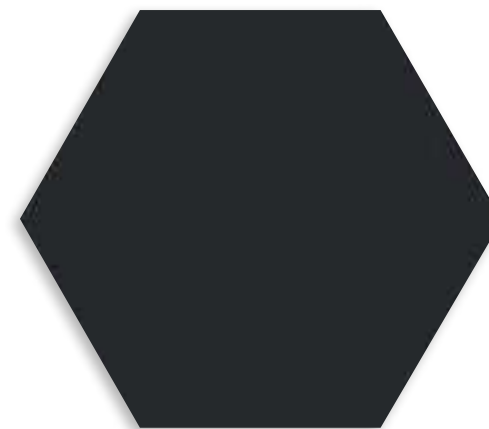
Blanco Hex 



Perla Hex 



Gris Hex 



Negro Hex 

Packing		CAJAS BOXES / BOITES			PALLETES PALLETS / PALETTE		
FAMILIA FAMILY	FORMATO FORMAT	PZAS PCS	PESO (KG) WEIGHT / POIDS	m2 SQM	CAJAS BOXES / BOITES	PESO (KG) WEIGHT / POIDS	m2 SQM
PV.PC.	22,5 x 25,9	20	17,50	0,88	60	1.067	52,80





Serie ODESA HEX 22,5 x 25,9 cm



CERLAT

Porcelánico Esmaltado / Glazed Porcelain / Grès Cérame Émaillé Bla
 26 Piezas diferentes / 26 Different pieces / 26 Pièces différents



Odesa Hex  



Lieja Hex Bone  

Packing	FAMILIA FAMILY		FORMATO FORMAT		CAJAS BOXES / BOITES			PALLETS PALLETS / PALETTE		
	PV.PC.	22,5 x 25,9	PZAS PCS	20	PESO (KG) WEIGHT / POIDS	m2 SQM	0,88	CAJAS BOXES / BOITES	PESO (KG) WEIGHT / POIDS	m2 SQM
								60	1.067	52,80



Serie ROTERDAM HEX 22,5 x 25,9 cm



CERLAT

Porcelánico Esmaltado / Glazed Porcelain / Grès Cérame Émaillé Bla



Róterdam Hex Taupe



Róterdam Hex Gris



Packing				CAJAS BOXES / BOITES			PALLETS PALLETS / PALETTE		
FAMILIA FAMILY	FORMATO FORMAT	PZAS PCS	PESO (KG) WEIGHT / POIDS	m2 SQM	CAJAS BOXES / BOITES	PESO (KG) WEIGHT / POIDS	m2 SQM		
PV.PC.	22,5 x 25,9	20	17,50	0,88	60	1.067	52,80		



Serie SPLIT HEX 22,5 x 25,9 cm



CERLAT

Porcelánico Esmaltado / Glazed Porcelain / Grès Cérame Émaillé Bla
 15 Piezas diferentes / 15 Different pieces / 15 Pièces différents



Split Hex Taupe



Split Hex Gris



Lieja Hex Bone



Lieja Hex Taupe



Lieja Hex Perla



Lieja Hex Gris



Packing

FAMILIA FAMILY	FORMATO FORMAT	CAJAS BOXES / BOITES	PESO (KG) WEIGHT / POIDS	m2 SQM	PALLETES PALLETS / PALETTE	PESO (KG) WEIGHT / POIDS	m2 SQM
PV.PC.	22,5 x 25,9	PZAS PCS 20	17,50	0,88	CAJAS BOXES / BOITES 60	1.067	52,80



CARACTERÍSTICAS TÉCNICAS
 TECHNICAL CHARACTERISTICS
 TECHNISCHE EIGENSCHAFTEN
 CARACTÉRISTIQUES TECHNIQUES

Bla PORCELÁNICO PAVIMENTOS - PORCELAIN FLOOR TILES																													
Descripción / Description / Beschreibung																													
SERIE Serie	REFERENCIA REFERENCE	Formato Format	UNE-EN ISO 10545-3 AA	UNE-EN ISO 10545-4 R	UNE-EN ISO 10545-4 S	UNE-EN ISO 10545-9 R-CH-T	UNE-EN ISO 10545-14 M	UNE-EN ISO 10545-13 AL	UNE-EN ISO 10545-13 L	UNE-EN ISO 10545-13 H	UNE 67-101	UNE-ENV 12633 Clase 0-3	DIN 51130 R9-R13	UNE-EN ISO 10545-7 PEI	SERIE Serie														
ANDRIA 22	Beige, Ceniza, Gris	22.5x22.5	Eb ≤ 0,5 %	≥ 35 N/mm2	>1300N	Resiste	5	GA	GLA	GHA	9	C2	R10	IV	ANDRIA 22														
APRICA 22	Acuarela, Azul, Blanco	22.5x22.5	Eb ≤ 0,5 %	≥ 35 N/mm2	>1300N	Resiste	5	GA	GLA	GHA	6	C1	R9	III	APRICA 22														
AREZZO 22	Beige, Gris, Perla, Taupé	22.5x22.5	Eb ≤ 0,5 %	≥ 35 N/mm2	>1300N	Resiste	5	GA	GLA	GHA	9	C2	R10	IV	AREZZO 22														
AROSA HEX	Beige, Gris	25.9x22.5	Eb ≤ 0,5 %	≥ 35 N/mm2	>1300N	Resiste	5	GA	GLA	GHA	9	C2	R10	IV	AROSA HEX														
BLANCO 22		22.5x22.5	Eb ≤ 0,5 %	≥ 35 N/mm2	>1300N	Resiste	5	GA	GLA	GHA	7	C2	R10	IV	BLANCO 22														
BLANCO 22 VINTAGE		22.5x22.5	Eb ≤ 0,5 %	≥ 35 N/mm2	>1300N	Resiste	5	GA	GLA	GHA	8	C2	R10	IV	BLANCO 22 VINTAGE														
BLANCO HEX		25.9x22.5	Eb ≤ 0,5 %	≥ 35 N/mm2	>1300N	Resiste	5	GA	GLA	GHA	7	C2	R10	IV	BLANCO HEX														
BOLONIA 22	Azul, Beige, Gris	22.5x22.5	Eb ≤ 0,5 %	≥ 35 N/mm2	>1300N	Resiste	5	GA	GLA	GHA	9	C2	R10	IV	BOLONIA 22														
BOLONIA 22 CENEFA	Azul, Beige, Gris	22.5x22.5	Eb ≤ 0,5 %	≥ 35 N/mm2	>1300N	Resiste	5	GA	GLA	GHA	8	C2	R10	IV	BOLONIA 22 CENEFA														
BOLONIA 22 ESQUINA	Azul, Beige, Gris	22.5x22.5	Eb ≤ 0,5 %	≥ 35 N/mm2	>1300N	Resiste	5	GA	GLA	GHA	8	C2	R10	IV	BOLONIA 22 ESQUINA														
BOTTICELLI 22		22.5x22.5	Eb ≤ 0,5 %	≥ 35 N/mm2	>1300N	Resiste	5	GA	GLA	GHA	8	C2	R10	IV	BOTTICELLI 22														
BRESCIA 22	Azul, Beige, Gris	22.5x22.5	Eb ≤ 0,5 %	≥ 35 N/mm2	>1300N	Resiste	5	GA	GLA	GHA	8	C2	R10	IV	BRESCIA 22														
BRESCIA 22 CENEFA	Azul, Beige, Gris	22.5x22.5	Eb ≤ 0,5 %	≥ 35 N/mm2	>1300N	Resiste	5	GA	GLA	GHA	9	C2	R10	IV	BRESCIA 22 CENEFA														
BRESCIA 22 ESQUINA	Azul, Beige, Gris	22.5x22.5	Eb ≤ 0,5 %	≥ 35 N/mm2	>1300N	Resiste	5	GA	GLA	GHA	9	C2	R10	IV	BRESCIA 22 ESQUINA														
BRIANZA 22	Mix	22.5x22.5	Eb ≤ 0,5 %	≥ 35 N/mm2	>1300N	Resiste	5	GA	GLA	GHA	9	C2	R10	IV	BRIANZA 22														
BRINDISI 22	Azul, Gris	22.5x22.5	Eb ≤ 0,5 %	≥ 35 N/mm2	>1300N	Resiste	5	GA	GLA	GHA	9	C2	R10	IV	BRINDISI 22														
CAGLIARI 22	Azul, Gris	22.5x22.5	Eb ≤ 0,5 %	≥ 35 N/mm2	>1300N	Resiste	5	GA	GLA	GHA	9	C2	R10	IV	CAGLIARI 22														
CALABRIA 153	Beige, Gris, Taupé	14.8x29.5	Eb ≤ 0,5 %	≥ 35 N/mm2	>1300N	Resiste	5	GA	GLA	GHA	9	C3	R12	IV	CALABRIA 153														
CALABRIA 22	Beige, Gris, Taupé	22.5x22.5	Eb ≤ 0,5 %	≥ 35 N/mm2	>1300N	Resiste	5	GA	GLA	GHA	9	C3	R12	IV	CALABRIA 22														
CARPI 22	Gris, Perla	22.5x22.5	Eb ≤ 0,5 %	≥ 35 N/mm2	>1300N	Resiste	5	GA	GLA	GHA	9	C2	R10	IV	CARPI 22														
CASERTA 22	Beige, Gris	22.5x22.5	Eb ≤ 0,5 %	≥ 35 N/mm2	>1300N	Resiste	5	GA	GLA	GHA	9	C2	R10	IV	CASERTA 22														
COSENZA 22 BN	Azul, Gris	22.5x22.5	Eb ≤ 0,5 %	≥ 35 N/mm2	>1300N	Resiste	5	GA	GLA	GHA	9	C2	R10	IV	COSENZA 22 BN														
DORTMUND HEX		25.9x22.5	Eb ≤ 0,5 %	≥ 35 N/mm2	>1300N	Resiste	5	GA	GLA	GHA	9	C2	R10	IV	DORTMUND HEX														
ESSEN HEX		25.9x22.5	Eb ≤ 0,5 %	≥ 35 N/mm2	>1300N	Resiste	5	GA	GLA	GHA	9	C2	R10	IV	ESSEN HEX														
FIDENSA 22	Azul, Gris	22.5x22.5	Eb ≤ 0,5 %	≥ 35 N/mm2	>1300N	Resiste	5	GA	GLA	GHA	9	C2	R10	IV	FIDENSA 22														
GENOVA 22	Azul, Bea, Beige, Cobalto, Gris, Marrón	22.5x22.5	Eb ≤ 0,5 %	≥ 35 N/mm2	>1300N	Resiste	5	GA	GLA	GHA	9	C2	R10	IV	GENOVA 22														
GINEBRA HEX	Gris, Taupé	25.9x22.5	Eb ≤ 0,5 %	≥ 35 N/mm2	>1300N	Resiste	5	GA	GLA	GHA	9	C2	R10	IV	GINEBRA HEX														
GOYA 22		22.5x22.5	Eb ≤ 0,5 %	≥ 35 N/mm2	>1300N	Resiste	5	GA	GLA	GHA	9	C2	R10	IV	GOYA 22														
GRIS 22		22.5x22.5	Eb ≤ 0,5 %	≥ 35 N/mm2	>1300N	Resiste	5	GA	GLA	GHA	7	C2	R10	III	GRIS 22														
GRIS HEX		25.9x22.5	Eb ≤ 0,5 %	≥ 35 N/mm2	>1300N	Resiste	5	GA	GLA	GHA	7	C2	R10	III	GRIS HEX														
LIEJA HEX	Bona, Gris, Perla, Taupé	25.9x22.5	Eb ≤ 0,5 %	≥ 35 N/mm2	>1300N	Resiste	5	GA	GLA	GHA	9	C2	R10	IV	LIEJA HEX														
LIVORNO 22		22.5x22.5	Eb ≤ 0,5 %	≥ 35 N/mm2	>1300N	Resiste	5	GA	GLA	GHA	8	C2	R10	IV	LIVORNO 22														
LUGANO HEX	Gris, Taupé	25.9x22.5	Eb ≤ 0,5 %	≥ 35 N/mm2	>1300N	Resiste	5	GA	GLA	GHA	9	C2	R10	IV	LUGANO HEX														
MALINAS HEX	Beige, Gris	25.9x22.5	Eb ≤ 0,5 %	≥ 35 N/mm2	>1300N	Resiste	5	GA	GLA	GHA	9	C2	R10	IV	MALINAS HEX														
MESINA 22	Azul, Gris	22.5x22.5	Eb ≤ 0,5 %	≥ 35 N/mm2	>1300N	Resiste	5	GA	GLA	GHA	9	C2	R10	IV	MESINA 22														
MILAN 22	Blanco	22.5x22.5	Eb ≤ 0,5 %	≥ 35 N/mm2	>1300N	Resiste	5	GA	GLA	GHA	6	C1	R9	III	MILAN 22														
MONZA 22	Mix	22.5x22.5	Eb ≤ 0,5 %	≥ 35 N/mm2	>1300N	Resiste	5	GA	GLA	GHA	9	C2	R10	IV	MONZA 22														
NEGRO 22		22.5x22.5	Eb ≤ 0,5 %	≥ 35 N/mm2	>1300N	Resiste	5	GA	GLA	GHA	7	C2	R10	III	NEGRO 22														
NEGRO HEX		25.9x22.5	Eb ≤ 0,5 %	≥ 35 N/mm2	>1300N	Resiste	5	GA	GLA	GHA	7	C2	R10	III	NEGRO HEX														
NOVARA 22	Beige, Gris, Perla, Taupé	22.5x22.5	Eb ≤ 0,5 %	≥ 35 N/mm2	>1300N	Resiste	5	GA	GLA	GHA	9	C2	R10	IV	NOVARA 22														
ODESA HEX		25.9x22.5	Eb ≤ 0,5 %	≥ 35 N/mm2	>1300N	Resiste	5	GA	GLA	GHA	9	C2	R10	IV	ODESA HEX														
ORION 22	Azul, Granate, Negro, Verde	22.5x22.5	Eb ≤ 0,5 %	≥ 35 N/mm2	>1300N	Resiste	5	GA	GLA	GHA	8	C2	R10	IV	ORION 22														
PALERMO 22	Azul, Bea, Beige, Gris	22.5x22.5	Eb ≤ 0,5 %	≥ 35 N/mm2	>1300N	Resiste	5	GA	GLA	GHA	9	C2	R10	IV	PALERMO 22														
PAVIA 22	Gris	22.5x22.5	Eb ≤ 0,5 %	≥ 35 N/mm2	>1300N	Resiste	5	GA	GLA	GHA	9	C2	R10	IV	PAVIA 22														
PERLA 22		22.5x22.5	Eb ≤ 0,5 %	≥ 35 N/mm2	>1300N	Resiste	5	GA	GLA	GHA	7	C2	R10	IV	PERLA 22														
PERLA HEX		25.9x22.5	Eb ≤ 0,5 %	≥ 35 N/mm2	>1300N	Resiste	5	GA	GLA	GHA	7	C2	R10	IV	PERLA HEX														
RAVENA 22	Azul, Gris, Teja	22.5x22.5	Eb ≤ 0,5 %	≥ 35 N/mm2	>1300N	Resiste	5	GA	GLA	GHA	9	C2	R10	IV	RAVENA 22														
RIMINI 22	Gris, Perla	22.5x22.5	Eb ≤ 0,5 %	≥ 35 N/mm2	>1300N	Resiste	5	GA	GLA	GHA	9	C2	R10	IV	RIMINI 22														
ROTTERDAM HEX	Gris, Taupé	25.9x22.5	Eb ≤ 0,5 %	≥ 35 N/mm2	>1300N	Resiste	5	GA	GLA	GHA	8	C2	R10	IV	ROTTERDAM HEX														
SPLIT HEX	Gris, Taupé	25.9x22.5	Eb ≤ 0,5 %	≥ 35 N/mm2	>1300N	Resiste	5	GA	GLA	GHA	9	C2	R10	IV	SPLIT HEX														
TRANI 22	Beige, Ceniza, Gris	22.5x22.5	Eb ≤ 0,5 %	≥ 35 N/mm2	>1300N	Resiste	5	GA	GLA	GHA	9	C2	R10	IV	TRANI 22														
TRENTO 22	Beige, Bona, Geo Beige, Geo Gris, Gris, Perla	22.5x22.5	Eb ≤ 0,5 %	≥ 35 N/mm2	>1300N	Resiste	5	GA	GLA	GHA	9	C2	R10	IV	TRENTO 22														
UDINE 22	Beige, Gris	22.5x22.5	Eb ≤ 0,5 %	≥ 35 N/mm2	>1300N	Resiste	5	GA	GLA	GHA	8	C2	R10	IV	UDINE 22														
URBINO 22	Natural	22.5x22.5	Eb ≤ 0,5 %	≥ 35 N/mm2	>1300N	Resiste	5	GA	GLA	GHA	8	C2	R10	IV	URBINO 22														
VARESE 22	Azul, Gris	22.5x22.5	Eb ≤ 0,5 %	≥ 35 N/mm2	>1300N	Resiste	5	GA	GLA	GHA	8	C2	R10	IV	VARESE 22														
VICENZA 22	Gris	22.5x22.5	Eb ≤ 0,5 %	≥ 35 N/mm2	>1300N	Resiste	5	GA	GLA	GHA	8	C2	R10	IV	VICENZA 22														

Bla CARACTERÍSTICAS TÉCNICAS

PORCELÁNICO ESMALTADO

TECHNICAL CHARACTERISTICS GLAZED PORCELAIN TILES

TECHNISCHE EIGENSCHAFTEN GLASIERTES FEINSTEINZEUG

CARACTÉRISTIQUES TECHNIQUES GRÉS CÈRAME ÉMAILLÉ

	ENSAYO/TEST	ENSAYO/ TEST	STANDARD	VALOR MEDIO AVERAGE VALUE
	Ortogonalidad Rectangularity / Rechwinkligkeit / Angularite	UNE-EN-ISO 10545-2	+/- 0,5 %	+/- 0,3 %
	Longitud y anchura Sides / Seiten / Cotes	UNE-EN-ISO 10545-2	+/- 0,6 %	+/- 0,3 %
	Grosor Thickness / Dicke / Epaisseur	UNE-EN-ISO 10545-2	+/- 5 %	+/- 5 %
	Curvatura Curvature / Krümmung / Courbure	UNE-EN-ISO 10545-2	+/- 0,5 %	+/- 0,3 %
	Resist. a productos domésticos de limpieza Household / Chemical / Widerstandfähigkeit gegenüber Chemischen/ Haushalts Produkten / Résistance aux produits chimiques à usage domestique	UNE-EN-ISO 10545-13	Min. Clase GA	Clase GA
	Resistencia a las Manchas Resistance to Stainings / Beständigkeit gegen Fleckenbilder / Résistance aux taches	UNE-EN-ISO 10545-14	Min. Clase 5	Min. Clase 5
	Resistencia a bajas concentraciones de ácidos y alcalis Low concentration of acids and alkalies Niedrige Konzentration von Säuren und Laugen Faible concentration d'acides et bases	UNE-EN-ISO 10545-13	Min. Clase GLA	Clase GLA
	Resistencia a altas concentraciones de ácidos y alcalis High concentration of acids and alkalies Hohe Konzentration von Säuren und Laugen Haute concentration d'acides et bases.	UNE-EN-ISO 10545-13	Min. Clase GHA	Clase GHA

	ENSAYO/TEST	ENSAYO/ TEST	STANDARD	VALOR MEDIO AVERAGE VALUE
	Absorción de agua Water Absorption / Wasseraufnahme / Absorption d'eau	UNE-EN-ISO 10545-3	Eb ≤ 0.5%	Eb ≤ 0.5%
	Resistencia a la Flexión Flexion Resistance / Biegefestigkeit / Résistance à la flexion	UNE-EN-ISO 10545-4	>35 N/mm ²	>35 N/mm ²
	Carga de Rotura Breakingstrength / Bruchfestigkeit / Résistance à la rupture	UNE-EN-ISO 10545-4	Mínimo 1300 N	Mínimo 1300 N
	Resistencia a la abrasión superficial Resistance to abrasion Abriebfestigkeit Résistance à la abrasion	UNE-EN-ISO 10545-6	Indicado por el fabricante	Según modelo
	Coefficiente de dilatación Térmica Lineal Lineal Thermal Expansion Coefficient / Linearer Wärme-ausdehnungs- koeffizient / Coefficient de dilatation thermique Lineaire	UNE-EN-ISO 10545-8	5.6 x 10-6/°C	5.6 x 10-6/°C
	Resistencia al choque Térmico Resistance to Thermal Shock / Temperaturwechselbeständigkeit / Résistance aux écarts de température	UNE-EN-ISO 10545-9	Exigida	Resiste
	Resistencia al Hielo Frost Resistance / Frostbeständigkeit / Résistance au gel	UNE-EN-ISO 10545-12	Exigida	Resiste
	Resistencia al deslizamiento Slip resistance/ Bestimmung der/ rutschemmende eigenschaft Résistance au glissement	DIN 51130 UNE-ENV 12633:2003	Indicado por el fabricante	Según modelo

DESCRIPCION

Description | Beschreibung

CAJAS

Boxes | Kartons

PALLETS

Pallets | Paletten

FAMILIA Family Familie	FORMATO Format Format	SERIE Serie Série	PZAS. Pcs. Anzahl Pièces	PESO (KG) Weight Gewicht Poid	M2 SQM	CAJAS Boxes Kartons Boîtes	PESO (KG) Weight Gewicht Poids	M2 SQM
PV.PC.	22.5X22.5 - 8 5564 x 8 5564	ANDRIA 22	20	20,20	1,01	72	1.471	72,72
	22.5X22.5 - 8 5564 x 8 5564	ÁPRICA 22	20	20,20	1,01	72	1.471	72,72
	22.5X22.5 - 8 5564 x 8 5564	AREZZO 22	20	20,20	1,01	72	1.471	72,72
	22.5X22.5 - 8 5564 x 8 5564	BLANCO 22	20	20,20	1,01	72	1.471	72,72
	22.5X22.5 - 8 5564 x 8 5564	BLANCO 22 VINTAGE	20	20,20	1,01	72	1.471	72,72
	22.5X22.5 - 8 5564 x 8 5564	BOLONIA 22	20	20,20	1,01	72	1.471	72,72
	22.5X22.5 - 8 5564 x 8 5564	BOLONIA 22 CENEFA	20	20,20	1,01	72	1.471	72,72
	22.5X22.5 - 8 5564 x 8 5564	BOLONIA 22 ESQUINA	20	20,20	1,01	72	1.471	72,72
	22.5X22.5 - 8 5564 x 8 5564	BOTTICELLI 22	20	20,20	1,01	72	1.471	72,72
	22.5X22.5 - 8 5564 x 8 5564	BRESCIA 22	20	20,20	1,01	72	1.471	72,72
	22.5X22.5 - 8 5564 x 8 5564	BRESCIA 22 CENEFA	20	20,20	1,01	72	1.471	72,72
	22.5X22.5 - 8 5564 x 8 5564	BRESCIA 22 ESQUINA	20	20,20	1,01	72	1.471	72,72
	22.5X22.5 - 8 5564 x 8 5564	BRIANZA 22	20	20,20	1,01	72	1.471	72,72
	22.5X22.5 - 8 5564 x 8 5564	BRINDISI 22	20	20,20	1,01	72	1.471	72,72
	22.5X22.5 - 8 5564 x 8 5564	CAGLIARI 22	20	20,20	1,01	72	1.471	72,72
	22.5X22.5 - 8 5564 x 8 5564	CALABRIA 22	20	20,20	1,01	72	1.471	72,72
	22.5X22.5 - 8 5564 x 8 5564	CARPI 22	20	20,20	1,01	72	1.471	72,72
	22.5X22.5 - 8 5564 x 8 5564	CASERTA 22	20	20,20	1,01	72	1.471	72,72
	22.5X22.5 - 8 5564 x 8 5564	COSENZA 22 BN	20	20,20	1,01	72	1.471	72,72
	22.5X22.5 - 8 5564 x 8 5564	FIDENSA 22	20	20,20	1,01	72	1.471	72,72
	22.5X22.5 - 8 5564 x 8 5564	GENOVA 22	20	20,20	1,01	72	1.471	72,72
	22.5X22.5 - 8 5564 x 8 5564	GOYA 22	20	20,20	1,01	72	1.471	72,72
	22.5X22.5 - 8 5564 x 8 5564	GRIS 22	20	20,20	1,01	72	1.471	72,72
	22.5X22.5 - 8 5564 x 8 5564	LIVORNO 22	20	20,20	1,01	72	1.471	72,72
	22.5X22.5 - 8 5564 x 8 5564	MESINA 22	20	20,20	1,01	72	1.471	72,72
	22.5X22.5 - 8 5564 x 8 5564	MONZA 22	20	20,20	1,01	72	1.471	72,72
	22.5X22.5 - 8 5564 x 8 5564	NEGRO 22	20	20,20	1,01	72	1.471	72,72
	22.5X22.5 - 8 5564 x 8 5564	NOVARA 22	20	20,20	1,01	72	1.471	72,72
	22.5X22.5 - 8 5564 x 8 5564	ORIÓN 22	20	20,20	1,01	72	1.471	72,72
	22.5X22.5 - 8 5564 x 8 5564	PALERMO 22	20	20,20	1,01	72	1.471	72,72
22.5X22.5 - 8 5564 x 8 5564	PAVIA 22	20	20,20	1,01	72	1.471	72,72	
22.5X22.5 - 8 5564 x 8 5564	PERLA 22	20	20,20	1,01	72	1.471	72,72	
22.5X22.5 - 8 5564 x 8 5564	RÁVENA 22	20	20,20	1,01	72	1.471	72,72	
22.5X22.5 - 8 5564 x 8 5564	RIMINI 22	20	20,20	1,01	72	1.471	72,72	
22.5X22.5 - 8 5564 x 8 5564	TRANI 22	20	20,20	1,01	72	1.471	72,72	
22.5X22.5 - 8 5564 x 8 5564	TRENTO 22	20	20,20	1,01	72	1.471	72,72	
22.5X22.5 - 8 5564 x 8 5564	UDINE 22	20	20,20	1,01	72	1.471	72,72	
22.5X22.5 - 8 5564 x 8 5564	URBINO 22	20	20,20	1,01	72	1.471	72,72	
22.5X22.5 - 8 5564 x 8 5564	VARESE 22	20	20,20	1,01	72	1.471	72,72	
22.5X22.5 - 8 5564 x 8 5564	VICENZA 22	20	20,20	1,01	72	1.471	72,72	
RV.PC.	22.5X22.5 - 8 5564 x 8 5564	MILAN 22	20	20,20	1,01	72	1.471	72,72
PV.PC.	14,8X29,5 - 5 5364 x 11 3364	CALABRIA 153	20	17,40	0,87	80	1.409	69,60
PV.PC.	22.5X25,9 - 8 5564 x 10 1364	AROSA HEX	20	17,50	0,88	60	1.067	52,80
	22.5X25,9 - 8 5564 x 10 1364	BLANCO HEX	20	17,50	0,88	60	1.067	52,80
	22.5X25,9 - 8 5564 x 10 1364	DORTMUND HEX	20	17,50	0,88	60	1.067	52,80
	22.5X25,9 - 8 5564 x 10 1364	ESSEN HEX	20	17,50	0,88	60	1.067	52,80
	22.5X25,9 - 8 5564 x 10 1364	GINEBRA HEX	20	17,50	0,88	60	1.067	52,80
	22.5X25,9 - 8 5564 x 10 1364	GRIS HEX	20	17,50	0,88	60	1.067	52,80
	22.5X25,9 - 8 5564 x 10 1364	LIEJA HEX	20	17,50	0,88	60	1.067	52,80
	22.5X25,9 - 8 5564 x 10 1364	LUGANO HEX	20	17,50	0,88	60	1.067	52,80
	22.5X25,9 - 8 5564 x 10 1364	MALINAS HEX	20	17,50	0,88	60	1.067	52,80
	22.5X25,9 - 8 5564 x 10 1364	NEGRO HEX	20	17,50	0,88	60	1.067	52,80
	22.5X25,9 - 8 5564 x 10 1364	ODESA HEX	20	17,50	0,88	60	1.067	52,80
	22.5X25,9 - 8 5564 x 10 1364	PERLA HEX	20	17,50	0,88	60	1.067	52,80
	22.5X25,9 - 8 5564 x 10 1364	RÓTERDAM HEX	20	17,50	0,88	60	1.067	52,80
	22.5X25,9 - 8 5564 x 10 1364	SPLIT HEX	20	17,50	0,88	60	1.067	52,80

RECOMENDACIONES DE COLOCACIÓN

INSTALLING INSTRUCTIONS

INSTRUCTIONS D'INSTALLATION ET D'USATGE

Recomendamos la colocación de todos nuestros productos con capa fina, doble encolado y con llana dentada dejando una junta mínima de 1.5 mm. En el caso de los productos Bla, Blla y Blb aconsejamos utilizar adhesivo de tipo C2 y para productos Blll aconsejamos utilizar adhesivo de tipo C1.

We recommend installing all our products with a thin layer of adhesive both sides (tile and surface) with a notched trowel. A minimum joint of 1.5 mm is required. Bla, Blla and Blb products should be installed with Adhesive C2. Blll products should be installed with adhesive C1.

L'installation de produits ceramics doit être fait avec une truelle dentée en appliquant une fine couche de colle adhesive. Un minimum de 1.5 mm entre pieces est conseillé. Les produits Bla, Blla y Blb doivent être installées avec la colle du type C2. La colle C1 est conseillé seulement pour les produits du type Blll.

CERLAT

CERLAT

Ctra. CV-191, km 3
12200 Onda (Castellón) Spain
tlf: (34) 964 776 570
fax: (34) 964 771 752

Email Nacional: ventas@cerlat.com
Email Exportación: export@cerlat.com

www.cerlat.com