
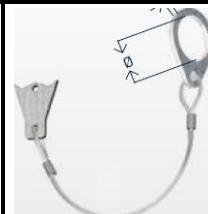
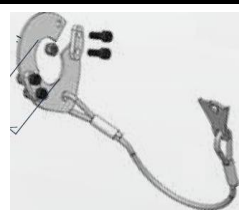



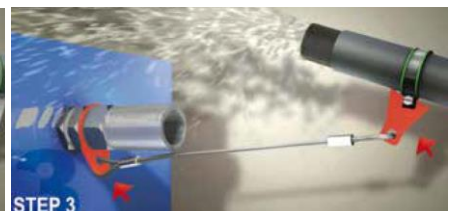


ABRAZADERA			
			
CODIGO	Ø MANG	MANG. ESTEHYNE	TARIFA
MTAPFSABR11115	11-11.5		7,2
MTAPFSABR12125	12-12.5		7,2
MTAPFSABR13135	13-13.5	(2SC 1/4)	7,2
MTAPFSABR1415	14-15	(XP 1/4) (2SC 5/16)	7,2
MTAPFSABR1617	16-17	XP 5/16) (1SC2SC 3/8	7,2
MTAPFSABR1718	17-18	(XP 3/8)	7,2
MTAPFSABR1819	18-19		7,2
MTAPFSABR2021	20-21	(4ST+ 3/8) (2SC 1/2)	7,2
MTAPFSABR2122	21-22	(XP 1/2)	7,2
MTAPFSABR2223	22-23	(4ST+ 1/2)	7,2
MTAPFSABR2425	24-25	(XP 5/8)	7,53
MTAPFSABR2526	25-26		7,53
MTAPFSABR2627	26-27	(4ST+ 5/8)	7,53
MTAPFSABR2728	27-28		7,89
MTAPFSABR2829	28-29	(XP 3/4)	7,89
MTAPFSABR3031	30-31	(4ST+ 3/4)	7,89
MTAPFSABR3233	32-33		7,89
MTAPFSABR3435	34-35		8,21
MTAPFSABR3637	36-37	(XP 1") (4ST+ 1")	8,21
MTAPFSABR3839	38-39		8,21
MTAPFSABR3940	39-40		8,21
MTAPFSABR4041	40-41		8,57
MTAPFSABR4243	42-43		8,57
MTAPFSABR4344	43-44		8,57
MTAPFSABR4445	44-45		8,57
MTAPFSABR4547	45-47	(4ST+ 1.1/4)	9,93
MTAPFSABR4850	48-50		9,91
MTAPFSABR5153	51-53	(4ST 1.1/2)	10,27
MTAPFSABR5354	53-54		10,27
MTAPFSABR5456	54-56		10,59
MTAPFSABR5759	57-59		10,59
MTAPFSABR6062	60-62		10,95
MTAPFSABR6365	63-65		10,95
MTAPFSABR6668	66-68	(4ST 2")	11,27
MTAPFSABR6971	69-71		11,27
MTAPFSABR7274	72-74		11,27
MTAPFSABR7577	75-77		11,27
MTAPFSABR7880	78-80		11,62
MTAPFSABR8183	81-83		11,62
MTAPFSABR8486	84-86		11,62
MTAPFSABR8789	87-89		11,95
MTAPFSABR9092	90-92		11,95
MTAPFSABR9395	93-95		12,31

PRESIONES DE TRABAJO MAXIMAS
ENTRE 350 Y 450 BAR

CABLE SEGURIDAD PARA RACOR			
			
CERRADAS		ABIERTAS	
RACOR	Ø INT	CODIGO	TARIFA
JIC 7/16	11.5	MTAPFSDIN115	20,26
JIC 1/2	13.2	MTAPFSDIN132	20,26
8L 1/4BSPP 9/16JIC	14.5	MTAPFSDIN145	21,23
9/16 JIC	14.8	MTAPFSDIN148	20,26
8S 10L 3/8BSPP	17	MTAPFSDIN170	21,23
10S 12L	18.5	MTAPFSDIN185	21,23
3/4 JIC	19.5	MTAPFSDIN195	20,26
12S	20.5	MTAPFSDIN205	21,23
14S 15L 1/2BSPP 7/8JIC	22.5	MTAPFSDIN225	21,53
7/8 JIC	22.8	MTAPFSDIN228	20,6
16S 5/8BSPP	24.5	MTAPFSDIN245	21,53
18L 3/4BSPP	26.5	MTAPFSDIN265	21,53
1.1/16 JIC	27.5	MTAPFSDIN275	21,23
20S 22L (1.3/16JIC)	30.5	MTAPFSDIN305	22,17
JIC 1.3/16	30.7	MTAPFSDIN307	25,21
BSP 1.5/16 JIC (L)	34	MTAPFSDIN340L	27,76
BSP 1.5/16 JIC (S)	34	MTAPFSDIN340S	22,8
(25S-28L)	36.5	MTAPFSDIN365	23,76
JIC 1.5/8 (L)	41.5	MTAPFSDIN415L	26,93
JIC 1.5/8 (S)	41.5	MTAPFSDIN415S	28,21
(30S-1.1/4")	42.5	MTAPFSDIN425	24,06
(35L)	45.5	MTAPFSDIN455	24,39
JIC 1.7/8 (L)	48	MTAPFSDIN480L	26,93
JIC 1.7/8 (S)	48	MTAPFSDIN480S	31,98
(BSP 1.1/2")	49	MTAPFSDIN490	24,69
(38S-42L)	52.5	MTAPFSDIN525	25
2" BSP	60	MTAPFSDIN600	27,57
JIC 2" 1/2 (L)	64	MTAPFSDIN640L	34,19

CABLE SEGURIDAD PARA BRIDA O ATORNILLAR			
			
CODIGO	Ø	DESCRIPCION	TARIFA
MTAPFSSAE085	8,5	CABLE SEG. BRIDA 1/2" 3000 -6000 PSI	24,06
MTAPFSSAE105L	10,5	CABLE SEG. BRIDA 3/4-1-1.1/4 3000 - 3/4 6000	24,69
MTAPFSSAE105S	10,5	CABLE SEG. BRIDA 3/4 3000 MANGUERA 3/4	28,97
MTAPFSSAE125	12,5	CABLE SEG. BRIDA 1.1/2" 2" 3000 - 1" 6000	25,33
MTAPFSSAE145	14,5	CABLE SEG. BRIDA 1.1/4" 6000	25,33
MTAPFSSAE165	16,5	CABLE SEG. BRIDA 1.1/2" 6000	25,96
MTAPFSSAE205	20,5	CABLE SEG. BRIDA 2" 6000	30,15
MTAPFSSAE25	25	CABLE SEG. BRIDA 2.1/2" 6000	61,76
MTAPFSSAE32	32	CABLE SEG. BRIDA 3" 6000	88,41



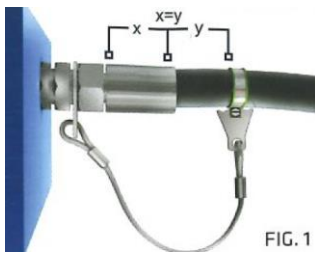


FIG. 1

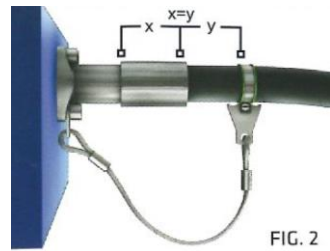


FIG. 2

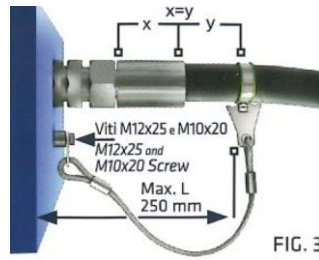


FIG. 3

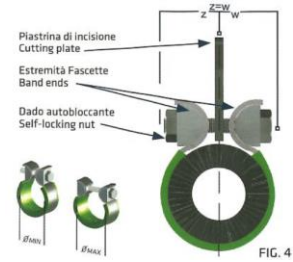


FIG. 4

