

UMBER

“Each
new situation
requires a **new**
architecture.”

- Jean Nouvel

A high-angle photograph of a courtyard. The central feature is a paved path made of light-colored rectangular tiles, separated by darker borders. The path leads from the bottom left towards the top right. On the right side of the path, there are two woven wicker chairs. The courtyard is surrounded by various green plants, including large-leafed ones and smaller ones in pots. The lighting is bright, casting shadows from the plants and chairs onto the path.

WHAT WE DO

We **approach** each project with a fresh mind, and allow the context to drive the design.

We **work deeply** with our clients to understand their aspirations and design architecture that is sustainable and contextual.

We **believe** in building relationships and not just buildings, sharing ownership and accountability consistently throughout the life-cycle of the project.

We are actively **engaged** in dialogue involving the practice of Architecture and it's impact on the city and the psyche.

We are particularly **open to** interdisciplinary collaborations that seek to engage with art, public space and the environment.

5 years – 30 projects

residential, hospitality, commercial



WHO WE ARE

BHAVANA RAO is the Founder at Umber Architecture. Her design philosophy hovers around **minimalism and sustainability**.

Her work is rigorously exploratory, context driven and ultimately rooted in the human experience. She is deeply interested in how we **inhabit** our cities and what **generates** ownership of public space. She believes in the power of Art to generate **change** and was the Artistic Production Lead for Bangalore Fantastic (befanstastic.in), India's first Tech-Art Biennale.

She has previously co-founded Slice of Life, an architecture and construction firm in Bangalore and worked on GE Footprints, a 96-home pedestrian **community** which won the **Futurac Green Leadership award** in 2015. She also writes about art, architecture, history and travel at Antarya magazine.

*Whatever good things we build,
end up building us.*

WORKS

3 Projects, 3 Typologies

1. CORNUCOPIA

Café and music venue, Mysore

CONCEPT

FOOD

YOGA

WINE

MUSIC

TWO SHIPPING CONTAINERS



OUTDOOR
PERFORMANCE SPACE

EXISTING FRANGIPANI TREE



+



YOGA

CONCEPT

mornings = **yoga + breakfast** bar

evenings = **music + wine** bar

A courtyard without walls

A floating stage

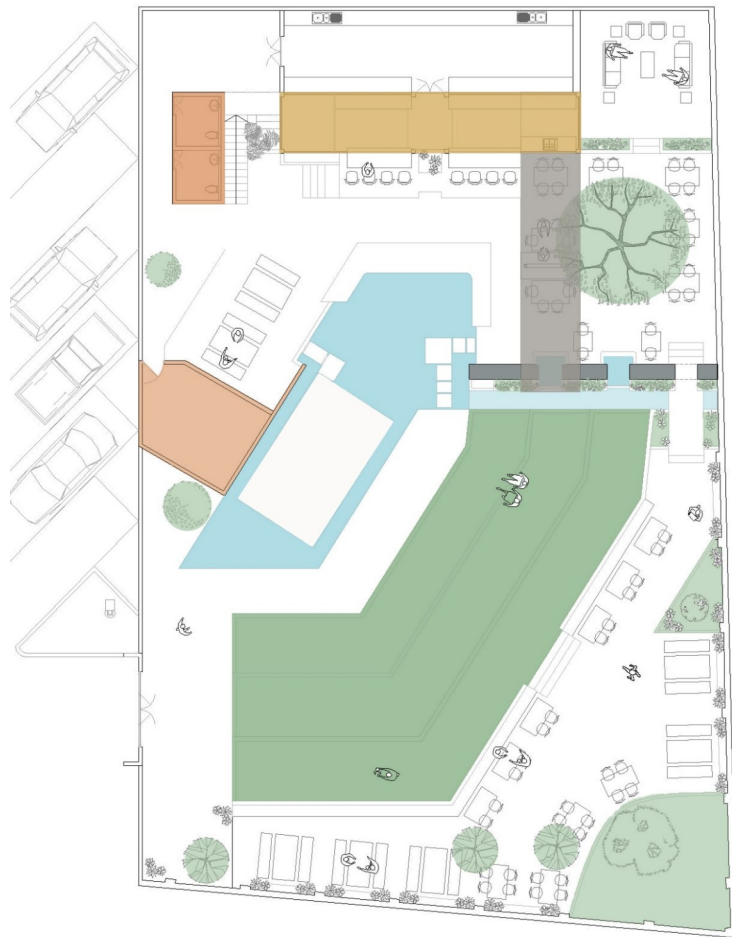
Gentle grassy slopes

For yoga. For watching stars.
For losing yourself in the music

We started by locating the containers next to the Plumeria tree. The distinctive massing of the two **shipping containers** in an L-formation lent itself to several pockets of space below and above. A **stone wall** hems in the volume below, adding colour and texture to the visual experience. The beautiful fully grown **Frangipani tree** gives this space **the quality of a courtyard**, with built volumes at different levels all around.

In stark contrast to the cozy seating areas is the **open air auditorium** at the entry. The steps are wide, with a gentle progression; conducive for early morning **yoga** sessions. The axis of the auditorium was tilted away from the café to ensure that the café retained its **independence and sense of space**, and if required could function separately. The element of **water** binds these two spaces together to make a cohesive whole.

Windows and voids in the stone wall keep the spaces **connected**, though separate. A water feature runs between the two zones in a pebbled channel, ending in a large shallow **pool around the stage**. An L-shaped bench around the pool allows guests to listen to a live performance with their **feet in the water**. Stepping stones lead across the pool, into the café area.





A courtyard without walls.



A courtyard without walls.

Café Cornucopia, Jan. 2018



Floating stage. Open to sky, but intimate.



A study in contrasts. Cozy and open. Sheltered and free.

Café Cornucopia, Oct. 2014



Gentle grassy slopes. For yoga. For watching stars. For listening to music.



Performance night.

Café Cornucopia, Jun. 2015



Status *Completed DEC 2014*

Construction period *One year*

Budget *40 L including furniture*

Design iterations *6*

Hours *Sigh*

2. MULBERRY FARM

Organic Farmstay at Salgame, Hassan

CONCEPT

Minimalist Architecture

Simple forms

Rustic aesthetic

Sustainable

Local materials

Low carbon footprint



".. to strip everything down to its essential quality and achieve simplicity."



a world view centered on the acceptance of transience and imperfection.

PROCESS

PURE FORM

Dynamic form
Natural roofline



Introverted form
Communal space



Rational form
Visual inertia



EXPLORING THE MOST BASIC NOTIONS OF "SHELTER" WITH PURE FORMS



DESIGN



Five villas, five permutations.

Identical roof profile,
different spatial planning.

Each villa has seating,
sleeping and bathing areas,
that are pockets of the
same large space.





Work in progress



Work in progress



In keeping with the core philosophy of sustainability, all existing buildings have been repurposed. Old sericulture shed = New Dining Hall. Old cowshed = New Reception room.

Status Ongoing
Construction period Started Mar. 2016
Budget 2 CR
Design iterations 16
Hours Design = 14 weeks



3. IHA

Independent home at RR Nagar, Bangalore

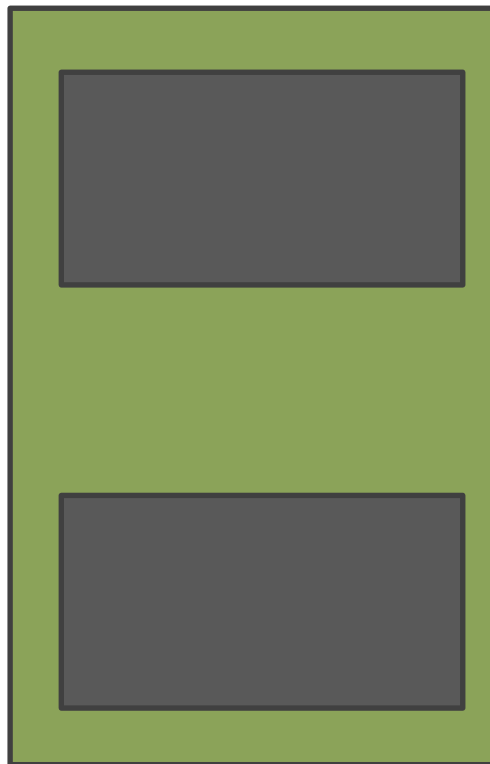
CONCEPT

60'x 40' site

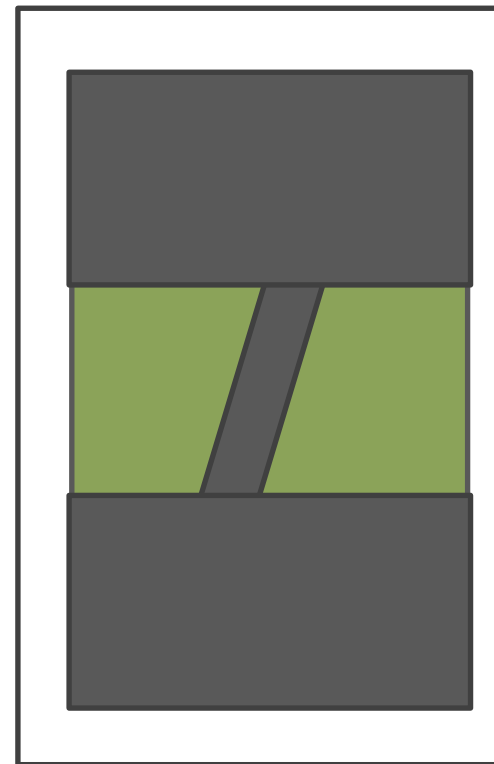
4 bedrooms

Garden

Vaastu



GF



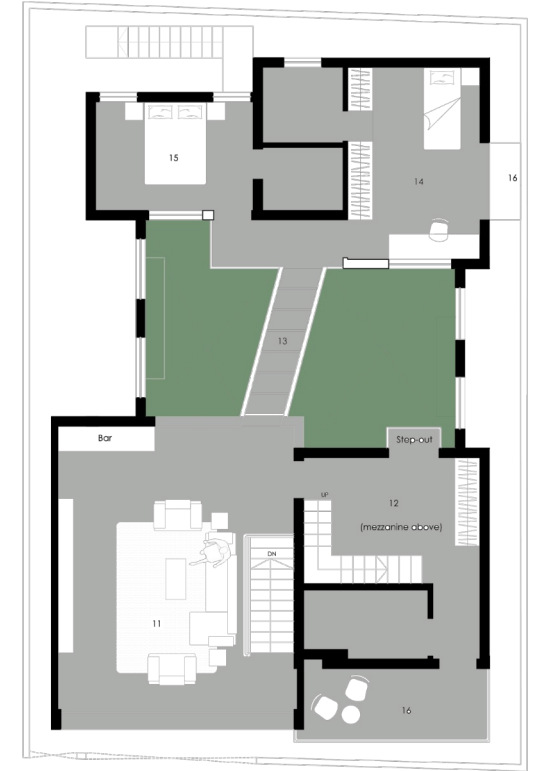
FF

DESIGN

We designed an **inward-looking house** with a massive courtyard. The Living, Dining and open Kitchen are planned around this **courtyard**, which forms an integral part of the spatial experience of each. The Puja is located at the centre and a semi-circular breakfast nook projects out.



GF



FF



This solid wooden door opens into a void.
2015



IHA, Feb.



This courtyard is the heart of the house and the hub of all activity.
2015

IHA, Feb.



A pocket of solace.
2015

IHA, Feb.



Open plan, open cooking, open dining, open living.
2015

IHA, Feb.



*Puja, bridge.
2015*



IHA, Feb.



*Entertainment room + bar.
2015*

IHA, Feb.



Status

Completed 2011

Construction period

18 months

Budget

1 CR

Design iterations

4

Hours

Design = 6 weeks



*Whatever good things we build,
end up building us.*

UMBER

#+91-9886520945

contact@[umberarchitecture.in](mailto:contact@umberarchitecture.in)