

# Go 250 / Go 255

010-30-0001

Barefoot Power

Results based on test procedures detailed in IEC 62257-9-5 v.4

Verify online:

[www.lightingglobal.org/products/www.lightingglobal.org/products/bfp-go250](http://www.lightingglobal.org/products/www.lightingglobal.org/products/bfp-go250)

Valid until: February 28 2022



Meets the Lighting Global Pico-PV Quality Standards



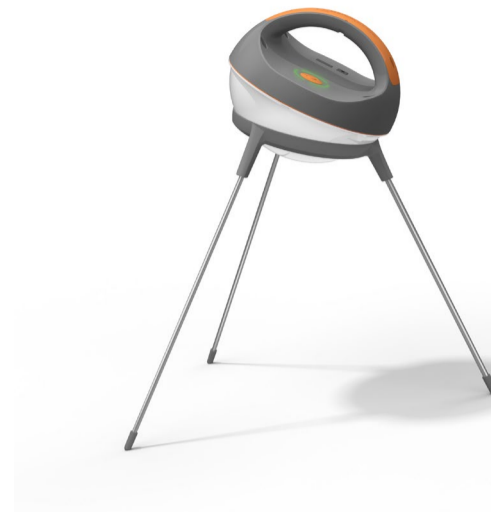
Mobile charging

1

Light point(s)



Plug-and-play



## WARRANTY INFORMATION

A 2-year warranty covering manufacturing defects

## PERFORMANCE DETAILS

		Run time after a typical day of solar charging (assuming 5kWh/m <sup>2</sup> /day)			
		Appliance <sup>a</sup>	Description	Used alone <sup>b</sup>	Used in combination <sup>c</sup>
included in kit		Main lighting unit	1 light points on ultra totaling 120 lumens and 1.4 power	6.4 hours	2.7 hours
	sold separately	Radio	portable radio (3 Wh battery, 3.7 V nominal voltage)	16 hours	2 hours
Smartphone		Smart phone (5.7 Wh battery)	1.3 hours	0.68 hours	

Available daily electrical energy<sup>c</sup> (Wh/day)

9.4

Performance measure	Brightness setting: ultra
Lighting full battery run time <sup>d</sup> for main unit (hours)	6.4
Total lighting service (lumen-hours/solar-day) (includes the both main lighting unit and any auxiliary lights included with the product)	770

<sup>a</sup> Only included appliances were tested. Run times and power ratings for appliances sold separately come from manufacturer ratings or standard estimates.

<sup>b</sup> Without any other loads used during the run time

<sup>c</sup> Based on an example use profile with all of the appliances listed in the "Used in combination" column used simultaneously.

<sup>d</sup> Lighting full battery run time estimates do not account for mobile phone charging or other auxiliary loads; the run time is defined as the time until the output is 70% of the initial, stabilized output.

## LIGHTING DETAILS

Lamp name	Number of lamps	Number of settings	Setting	Light output (lm)	Lumen efficacy <sup>e</sup> (lm/W)	CRI <sup>f</sup>	CCT <sup>g</sup>	Distribution type	Lumen maintenance <sup>h</sup>
Main Lighting Unit	1	3	ultra	120	77	71	5900	Wide	97%

<sup>e</sup> Lumen efficacy is the power consumption at a light point during the light output test.

<sup>f</sup> Color Rendering Index. An index of 100 is equivalent to viewing objects in daylight; above 80 is considered good.

<sup>g</sup> Correlated Color Temperature in degrees Kelvin. Describes color appearance as warm (2700-3000 K), cool (3000-5000 K), or daylight (>5000 K)

<sup>h</sup> Percent of the original light output that remains after 2,000 hours of run time

**SPECIAL FEATURES****Stand**

The Go 250 includes the stand shown in the picture above. The Go 255 is sold without this stand.

**PORTS**

1

**USB 2.0 type A**

Mobile phones and radios can be charged. Adapters are included.

**DURABILITY**

Overall durability and workmanship

Pass

Durability tests passed

Switch test, Drop test, Strain relief test, physical ingress protection.

Level of water protection

Main Lighting Unit

has protection from occasional rain; met with appropriate warning label

PV module

Has protection from permanent outdoor exposure

**SOLAR DETAILS**

PV module type

Polycrystalline silicon

PV maximum power

4.1 watts

**BATTERY DETAILS**

Battery replaceability

Easily replaceable with common tools; however, the warranty is void if product is opened.

Battery chemistry

Lithium iron phosphate

Battery package type

26650 cylindrical cells

Battery capacity

3.3 Ah

Battery nominal voltage

3.2 V

Battery status indication

Three indicators for battery state-of-charge. One indicator for charging status.

**PRODUCT DETAILS**

Manufacturer name

Barefoot Power

Product name

Go 250 / Go 255

Product model / ID number

010-30-0001

Contact information

info@barefootpower.com

Website

www.barefootpower.com

Dimensions (entire product in package)

15 x 27 x 15 cm

Mass

1220 g

**SSS INFORMATION**

Specs sheet expiration date

February 28 2022

Quality standards framework version

2018

Revision

2019.08