

Silver

02
IONA

Verify online:
<https://data.verasol.org/products/sek/fo-silver>
Valid until: September 30, 2025

Results based on test procedures detailed in IEC TS 62257-9-5 and IEC TS 62257-9-8



Meets the requirements in IEC TS 62257-9-8:2020 for Size A Kits



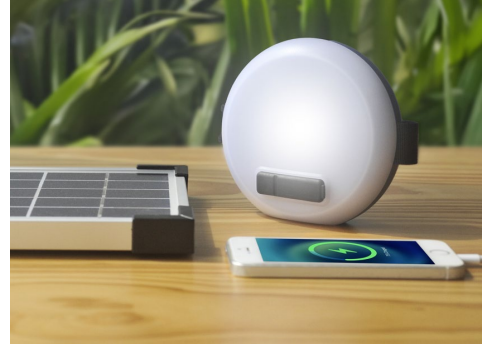
Mobile charging

1

Light point(s)



Plug-and-play



WARRANTY INFORMATION

A 2-year warranty covering manufacturing defects in the system.

PERFORMANCE DETAILS

				Run time after a typical day of solar charging (assuming 5kWh/m ² /day)	
VeraSol Certified?	Included in Kit?	Appliance ^a	Description	Used alone ^b	Used in combination ^c
yes	included	Main lighting unit	1 light point on high totaling 130 lumens and 3.3 W power	7.8 hours	2.5 hours
no	not included	Mobile phone	Smart phone (5.7 Wh battery)	0.9 full charge(s)	0.62 full charge(s)

Available daily electrical energy ^e (Wh/day)	7.1
---	-----

Performance measure	Brightness setting: high
Lighting full battery run time ^d for main unit (hours)	9
Total lighting service (lumen-hours/solar-day) (includes the both main lighting unit and any lights with internal batteries included with the product)	1330

^a Only included appliances were tested. Run times and power ratings for appliances sold separately come from manufacturer ratings or standard estimates.

^b Without any other loads used during the run time

^c Based on an example use profile with all of the appliances listed in the "Used in combination" column used simultaneously.

^d Lighting full battery run time estimates do not account for mobile phone charging or other auxiliary loads; the run time is defined as the time until the output is 70% of the initial, stabilized output.

LIGHTING DETAILS


Lamp name	Number of lamps	Number of settings	Setting	Light output (lm)	Lumen efficacy ^e (lm/W)	CR ^f	CCT ^g	Distribution type	Lumen maintenance ^h
Integrated Lamp	1	4	high	130	100	84	4200	Wide	97%
			medium	60	100	84	4200	--	--

^e Lumen efficacy is the power consumption at a light point during the light output test.

^f Color Rendering Index. An index of 100 is equivalent to viewing objects in daylight; above 80 is considered good.

^g Correlated Color Temperature in degrees Kelvin. Describes color appearance as warm (2700-3000 K), cool (3000-5000 K), or daylight (>5000 K)

^h Percent of the original light output that remains after 2,000 hours of run time

PORTS		
1	USB 2.0 type A  Mobile phones and radios can be charged. Adapters are included.	
DURABILITY		
Overall durability and workmanship	Pass	
Durability tests passed	Switch test, Drop test, Strain relief test, Physical ingress protection, PV durability tests	
Level of water protection	Main Unit	Has protection from permanent outdoor exposure; met IP65
	PV module	Has protection from permanent outdoor exposure.
SOLAR DETAILS		
PV module type	Polycrystalline silicon	
PV maximum power	3.3 watts	
MAIN UNIT BATTERY DETAILS		
Battery replaceability	Easily replaceable with common tools; however, the warranty is void if product is opened.	
Battery chemistry	Lithium iron phosphate	
Battery package type	26650	
Battery capacity	3.8 Ah	
Battery nominal voltage	3.2 V	
Battery status/ other indicator lights	Three indicators are for battery level / One indicator is for solar & DC input	
PRODUCT DETAILS		
Manufacturer name	IONA	
Product name	Silver	
Contact information	sales@ionasolar.com	
Website	www.ionasolar.com	
Dimensions (entire product in package)	19 x 17 x 7.6 cm	
Mass	810 g	
SSS INFORMATION		
Specs sheet expiration date	September 30, 2025	
Revision	2023.11	