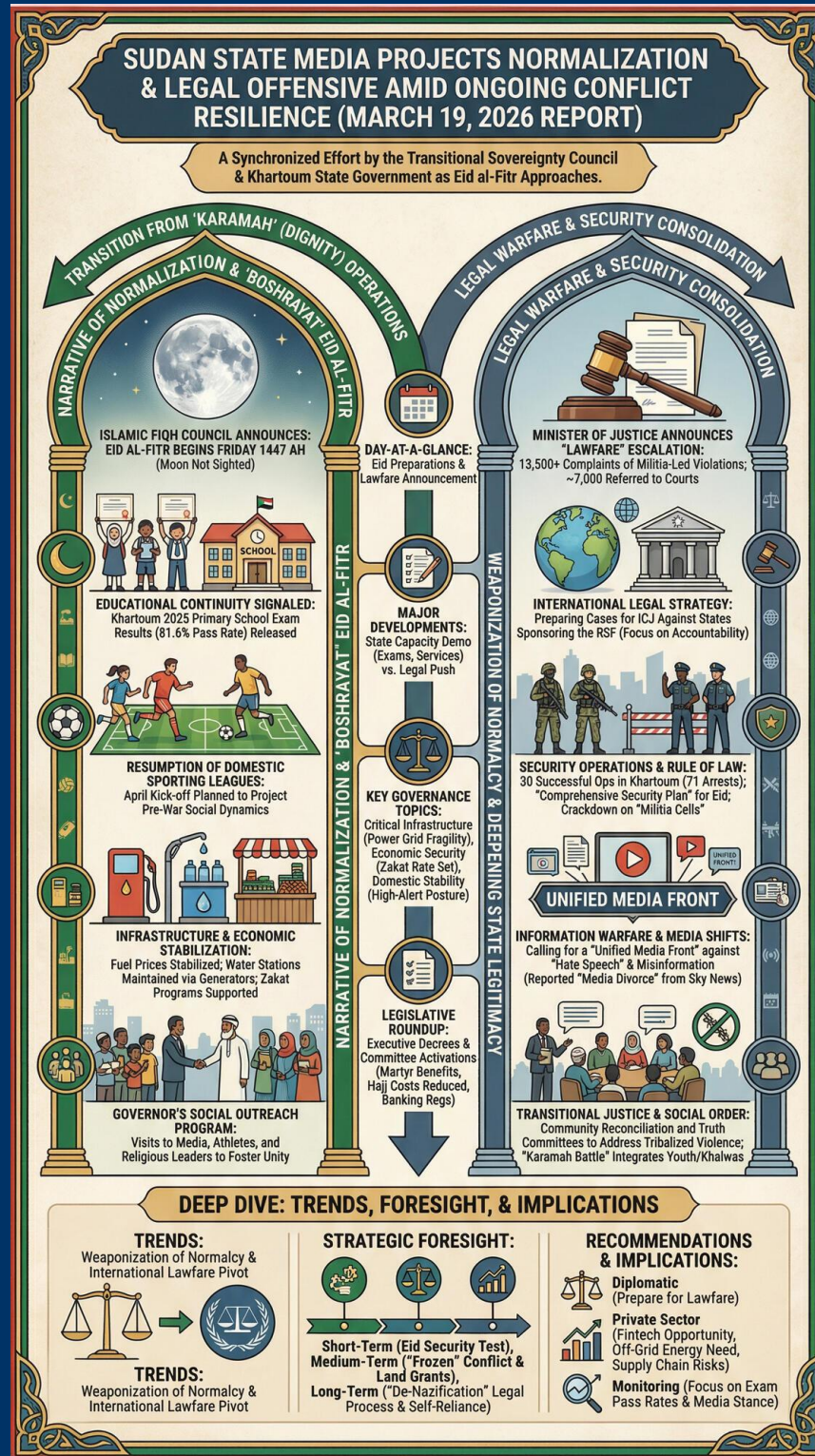


TODAY'S MEDIA TRENDS

SUDAN

MARCH 19, 2026

THE GDELT PROJECT



TODAY'S MEDIA TRENDS

SUDAN

MARCH 19, 2026

SUDAN STATE MEDIA PROJECTS NORMALIZATION AND LEGAL OFFENSIVE AMID ONGOING CONFLICT RESILIENCE

DAY-AT-A-GLANCE

On March 19, 2026, Sudanese state media coverage centered on a synchronized effort by the Transitional Sovereignty Council and the Khartoum state government to project an image of "normalization" and administrative control as the country nears the end of Ramadan. The primary narrative arc transitions from the "Karamah" (Dignity) military operations to the "Boshrayat" (Glad Tidings) of Eid al-Fitr. This is exemplified by the announcement that Friday will mark the first day of [Eid al-Fitr](#), following the Islamic Fiqh Council's determination that the moon for Shawwal was not sighted. The government is leveraging this religious milestone to demonstrate state capacity through the release of primary school exam results, the stabilization of fuel prices, and the resumption of domestic sporting leagues.

Simultaneously, the Sudanese government is escalating its "legal warfare" (lawfare) strategy. The Minister of Justice revealed that

over 13,000 legal complaints have been filed regarding militia-led violations, with thousands [referred to the courts](#). This domestic judicial push is being paired with an international strategy to pursue legal action against foreign states accused of sponsoring the Rapid Support Forces (RSF). By framing the conflict as a "Battle of Dignity" supported by youth, religious institutions (Khalwas), and civil society, the state aims to consolidate its legitimacy while preparing for a post-conflict "reconstruction and construction" phase, despite admitting to significant [fuel and gas shortages](#) in the preceding weeks.

MAJOR DEVELOPMENTS

- **State-Led Normalization and Eid Preparations**

- The government announced that [Friday is the first day](#) of Eid al-Fitr 1447 AH, following the Islamic Fiqh Council's report.
- Khartoum State's Ministry of Education released 2025 primary school exam results, claiming a [pass rate of 81.6%](#), an increase from the previous year, intended to signal educational continuity.
- The Khartoum State Governor initiated a wide-ranging "social outreach" program, visiting media houses, athletes, and religious leaders to project a return to [pre-war social dynamics](#).

• Legal and International Strategy

- The Minister of Justice, Dr. Abdullah Al-Dairif, confirmed that the National Committee for Investigating Violations has recorded [13,500 total cases](#), with 6,800 already referred to the judiciary.
- Sudan is reportedly preparing cases for the International Court of Justice against [certain countries](#) alleged to have participated in or supported the ongoing rebellion.
- The state is shifting toward a narrative of "transitional justice" that includes community reconciliation and truth committees [to address tribalized violence](#).

• Security Operations and Infrastructure Stabilization

- Security forces in Khartoum reported 30 successful operations resulting in the arrest of [71 suspects](#), including both criminals and alleged "militia collaborators."
- The Ministry of Water and Electricity announced technical measures to keep water stations running via [generators and wells](#) during the high-heat summer months.
- In White Nile State, the government inaugurated new wings at the Kosti Teaching Hospital and resumed operations at the [Kosti water station](#) to handle seasonal demand.

• Information Warfare and Media Shifts

- Reports emerged of a significant "media divorce" where the international Sky News brand reportedly distanced itself from its Arabic affiliate amid [accusations of misinformation](#) regarding the Sudan conflict.
- Sudanese officials are calling for a "unified media front" to counter "hate speech" and psychological operations [targeting the military's image](#).

KEY GOVERNANCE TOPICS

Critical Infrastructure The state is prioritizing the maintenance of "life-line" services—water, electricity, and fuel—to prevent civil unrest during the Eid holiday. Officials admitted that "hallucination-like" panic led to fuel queues recently, but claim the [supply is now stable](#). The reliance on [backup generators](#) for major water stations suggests a fragile power grid that remains a strategic vulnerability.

Legal Warfare (Lawfare) Governance is increasingly being channeled through the judiciary as a tool for both domestic order and international diplomacy. By referring nearly [7,000 cases to court](#), the government is attempting to institutionalize its fight against the RSF, moving beyond purely kinetic warfare to legal delegitimization of the "rebellion."

Economic Security Despite state narratives of stability, the economic situation remains strained. The government is implementing Zakat (alms) programs to support "vulnerable families" and has set the [Zakat al-Fitr rate](#) at 6,000 SDG per person. High prices in markets are a noted concern, though traders claim prices are [lower than last year](#) to encourage consumer activity.

Domestic Stability & Social Order The government is using the concept of the "Karamah Battle" to integrate youth and religious schools (Khalwas) into the security architecture. Religious institutions like the [Al-Katiab Masjid](#) are being touted as centers for "Jihad values" and social solidarity, indicating a deepening of the ideological alignment between the state and traditional religious structures.

Rule of Law The Khartoum State Security Committee has emphasized a "comprehensive security plan" for Eid, involving [joint patrols](#) and a crackdown on "militia cells" in residential areas. This suggests that while "stability" is the public message, the state remains in a high-alert counter-insurgency posture.

LEGISLATIVE ROUNDUP

The reporting period focused heavily on executive decrees and the activation of judicial committees rather than traditional legislative debate, reflecting the current state of emergency governance.

BILLS DISCUSSED/DEBATED:

- **National Service and Martyr Benefits Policy:** An executive policy was confirmed by the Governor of Omdurman to grant [plots of land](#) to the families of "martyrs" and volunteers from the "Karamah" mobilization forces.
- **Hajj Service Rationalization:** The Higher Committee for Hajj Services announced new contracts in Makkah and Madinah that successfully [reduced costs](#) compared to the previous season, despite currency fluctuations.

- **Banking Regulations:** The Central Bank of Sudan has maintained a [5 million SDG ceiling](#) on certain electronic check transactions to manage liquidity and prevent fraud within the digital clearing system.

HEARINGS & PRESS EVENTS:

- **Ministry of Justice Press Briefing:** Minister Al-Dairif detailed the progress of the National Committee for Investigating Violations, focusing on [documenting RSF atrocities](#) for international consumption.
- **Khartoum Security Committee Meeting:** Chaired by Governor Ahmed Osman Hamza, the meeting finalized the [Eid security and service plan](#).
- **Omdurman Youth Forum:** Ministers of Culture and Youth held a public event to discuss the [role of sports centers](#) in post-war social healing.

DEEP DIVE: TRENDS AND THEMES

The Weaponization of Normalcy The Sudanese state is engaging in a sophisticated "return to normalcy" campaign. By releasing [exam results](#) and announcing the resumption of the [football league](#) in April, the government is attempting to prove its administrative superiority over the RSF. This trend suggests that the conflict has reached a stage where psychological control over the "civilian experience" is as important as territorial control. However, the recurring mentions of [water station failures](#) due to power outages indicate that this normalcy is being built on an extremely precarious infrastructure base.

Transition to International Lawfare There is a clear strategic pivot toward holding

external actors accountable for the conflict. The Minister of Justice's mention of [suing specific countries](#) at the ICJ suggests Sudan is looking to replicate the legal strategies seen in other global conflicts (e.g., South Africa's ICJ cases). This is likely aimed at pressuring regional powers to cease logistical or financial support for the RSF by raising the sovereign risk of doing so.

IDP Integration and the "New Sudan" Narrative Reports from the Blue Nile region highlight a massive influx of [internally displaced persons \(IDPs\)](#) arriving in Damazin. The state narrative is shifting from treating these people as victims to integrating them into a "national reconstruction" workforce. There is an increasing emphasis on training families to be [self-sufficient](#) rather than dependent on international aid, which may be a response to the perceived failure or bias of international NGOs.

STRATEGIC FORESIGHT

Short Term (1-4 Weeks): The Eid al-Fitr holiday will serve as a critical test of the state's security plan. If the ["joint patrols"](#) successfully prevent RSF incursions or urban crime during the celebrations, it will significantly boost government legitimacy. Conversely, any major security breach during the holiday would shatter the carefully constructed "stability" narrative.

Medium Term (1-6 Months): The scheduled resumption of the [football league in April](#) and the primary school graduation cycle suggest the government is betting on a "frozen" or "contained" conflict zone that allows for urban life to proceed. We should expect to see the government move forward with [land grants](#) for martyrs' families, which serves to

permanently tie the interests of the military's base to the current administration's survival.

Long Term (1-5 Years): The extensive documentation of [13,500 legal cases](#) points toward a long-term "de-Nazification" style legal process for RSF members and supporters. This suggests that even if a ceasefire is reached, the government intends to use the judiciary to permanently exclude RSF-aligned figures from Sudanese political and economic life. The emphasis on "self-reliance" and training for families [signals a structural shift](#) away from international aid dependency.

RECOMMENDATIONS & IMPLICATIONS

For International Policy:

- Diplomatic entities should prepare for "lawfare" challenges in international forums as Sudan seeks to litigate against [state sponsors of the RSF](#).
- Monitoring the [primary school pass rates](#) and exam participation can serve as a more reliable proxy for state control than military press releases.
- Expect a hardening of the Sudanese government's stance against international media and human rights organizations perceived as biased, following the [Sky News controversy](#).

For Private Sector/Investors:

- **Banking and Fintech:** The move toward [electronic clearing systems](#) and digital banking literacy (as promoted by state media) suggests a growing opportunity for fintech, despite the conflict, as the population avoids physical cash and checks.

- **Energy and Infrastructure:** There is an acute need for [off-grid solar and backup power solutions](#) for critical infrastructure, as the centralized grid remains unable to meet summer demand for water and sanitation.
- **Supply Chain Risks:** While fuel prices are [currently reported as stable](#), the admission of recent "panic" and "scarcity" indicates that logistics chains for fuel and gas remain highly volatile and subject to sudden state intervention or market shocks.

ABOUT THIS REPORT

Today's Media Trends is a public interest experiment in applying deep thematic trend analysis to television news coverage from around the world to explore how responsibly applied advanced AI can help journalists and scholars better understand the overarching trends, themes and patterns of our global world.

No data is used to train or tune any AI model.

Each morning, in collaboration with the Internet Archive's TV News Archive, we apply Google's Gemini 3 to deeply examine

yesterday's coverage from each television news channel to tease out the overarching themes and trends of its news coverage into a richly annotated thematic analysis. Each high-level insight is connected back to the original broadcast, allowing journalists and scholars to understand the dominate themes and trends and instantly click out to the underlying sources for details.

By helping journalists and scholars see the broader trends and patterns of global news coverage, this analysis helps them identify relevant stories and coverage they might not otherwise have encountered and uncover connections, emphases and narrative shifts that enable more comprehensive reporting and deeper, evidence-based research.

This report is entirely machine generated using Gemini 3 and may include errors and omissions. Please verify all findings. No data is used to train or tune any AI model.

For questions or suggestions, please contact kalev.leetaru5@gmail.com. You can also learn more about the GDEL Project at <https://blog.gdelproject.org/> and the Internet Archive's TV News Archive at <https://archive.org/details/tv>.