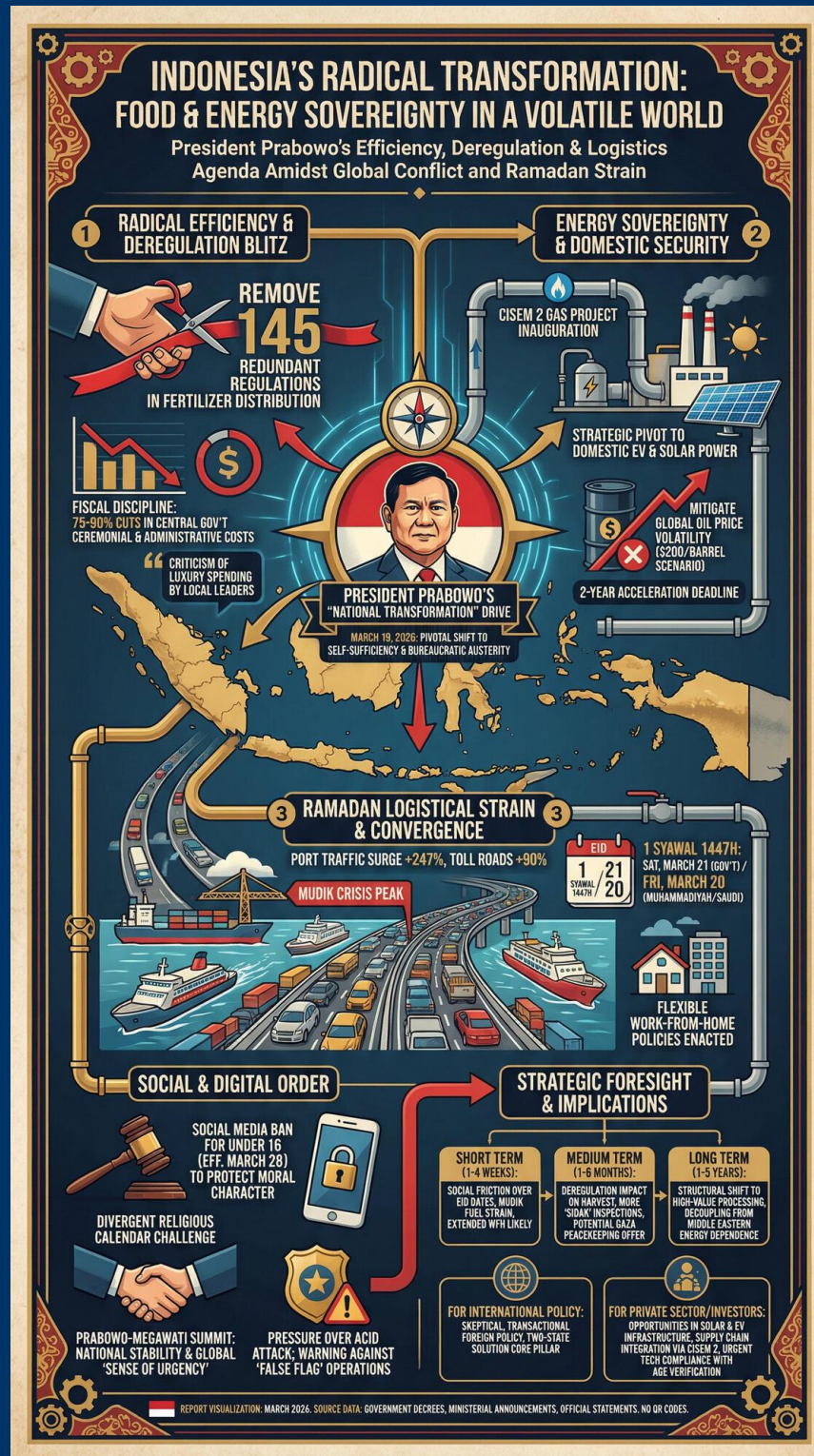


TODAY'S MEDIA TRENDS

TVRIN

MARCH 19, 2026

THE GDELT PROJECT



TODAY'S MEDIA TRENDS

TVRIN

MARCH 19, 2026

PRESIDENT PRABOWO DRIVES A RADICAL EFFICIENCY AND DEREGULATION AGENDA TO SECURE FOOD AND ENERGY SOVEREIGNTY AS INDONESIA NAVIGATES A LOGISTICALLY STRAINED RAMADAN SEASON AND ESCALATING GLOBAL CONFLICTS.

DAY-AT-A-GLANCE

March 19, 2026, marks a pivotal moment in the Prabowo administration's effort to transition from "national building" to a "national transformation" focused on self-sufficiency and bureaucratic austerity. The President has signaled a [radical deregulation](#) of critical sectors, specifically targeting the removal of 145 redundant regulations in fertilizer distribution to bolster food security. Simultaneously, the administration is enforcing strict fiscal discipline, [criticizing local leaders](#) for luxury spending while mandating 75-90% cuts in central government ceremonial and administrative costs. This push for efficiency is coupled with a drive toward energy independence, highlighted by the [Cisem 2 gas project](#) inauguration and a strategic pivot toward domestic electric

vehicle (EV) production and solar power to mitigate the risks of global oil price volatility.

Domestically, Indonesia is managing a complex convergence of religious and logistical events. The government has officially set [1 Syawal 1447H](#) for Saturday, March 21, creating a discrepancy with Muhammadiyah and Middle Eastern nations who recognize the holiday on March 20. This timing overlaps with the Hindu Day of Silence (Nyepi), testing national [social cohesion](#). Logistically, the "Mudik" homecoming is reaching a crisis peak, with port traffic [surging by 247%](#) and toll road volumes increasing by nearly 90%, forcing the government to implement flexible Work-From-Home (WFH) policies to manage the strain on infrastructure and energy consumption.

MAJOR DEVELOPMENTS

- **Radical Bureaucratic Rationalization:** President Prabowo has initiated a comprehensive "deregulation blitz," identifying 145 separate regulations that currently [stifle fertilizer distribution](#) and agricultural productivity.
- **Energy Sovereignty and Infrastructure:** The completion of the 242km [Cisem 2 gas pipeline](#) marks a significant step in integrating the national gas grid, while the administration has set a two-year deadline for [accelerating solar energy](#) and EV conversion.
- **Ramadan Logistical Strain:** The annual Mudik migration has seen record-breaking numbers, with the Padang-Sicincin toll road reporting an [89.5% traffic increase](#) and major ports reaching peak capacity.

- **Political Consolidation:** President Prabowo held a high-stakes meeting with [Megawati Sukarnoputri](#) at the Istana Merdeka to discuss national stability and geopolitical "sense of urgency."
- **Social Media Regulation:** The Ministry of Religious Affairs announced a [ban on social media](#) for children under 16, effective March 28, 2026, framed as a measure to protect moral character.
- **Divergent Religious Calendar:** The Ministry of Religious Affairs [confirmed 1 Syawal](#) for March 21 based on MABIMS criteria, despite Muhammadiyah and [Saudi Arabia](#) declaring March 20.

KEY GOVERNANCE TOPICS

Economic Security & Efficiency: The administration is pivoting toward a "war economy" mindset, focusing on [eliminating 30% inefficiency](#) in the national budget compared to regional peers. Specific targets include cutting ceremonial budgets and souvenir costs by 75% and office supplies by 90% to redirect funds toward [rural infrastructure](#) like bridges and irrigation.

Energy Security: Indonesia is aggressively hedging against global energy disruptions. The President has ordered the [conversion of all tractors](#) and public transport to electric power within years, citing the necessity of insulating the poor from \$200/barrel oil scenarios while [expanding domestic gas](#) distribution via the Cisem projects.

Food & Water Access: The "Sarayu Network" is being promoted as a national model for [integrated farming](#) and conservation, aiming to secure animal protein through communal livestock management and [river basin conservation](#) to prevent landslides and secure irrigation.

Geopolitical Power Dynamics: The President expressed deep skepticism regarding international "human rights" rhetoric that ignores [conflicts in Gaza](#) while advocating for a "Two-State Solution." Indonesia is positioning itself as a potential [peacekeeper in Palestine](#), contingent on UN approval and national caveats regarding military engagement against Hamas.

Domestic Stability & Social Order: The administration is facing pressure over the [acid attack](#) on activist Andreus. While the President guaranteed no impunity for security forces, he also warned against ["false flag" operations](#) designed to frame the regime as authoritarian.

LEGISLATIVE ROUNDUP

The governance focus today remained on executive decrees, administrative deregulation, and the implementation of previously passed social and energy regulations. Key policy shifts were announced via the Ministry of Religious Affairs and the Coordinating Ministry for Economic Affairs.

BILLS DISCUSSED/DEBATED:

- **PP Tunas (Implementing Regulation):** Discussion of the derivative rules for protecting minors online, leading to the [social media restriction](#) policy for those under 16.
- **Deregulation of Fertilizer Distribution:** Executive action to [bypass 145 regulations](#) across multiple ministries and local government tiers.

HEARINGS & PRESS EVENTS:

- **Sidang Isbat 1447H:** The national council to [determine the Eid date](#), involving 50 experts and representatives from various Islamic organizations.
- **Prabowo-Megawati Summit:** A high-level [political meeting](#) focused on national priority and the current global "crisis" sense.
- **Ministry of Transportation Mudik Briefing:** Updates on the implementation of [one-way and contraflow](#) systems on the Trans-Java toll roads.

DEEP DIVE: TRENDS AND THEMES

The Efficiency Doctrine as Political Strategy: President Prabowo is increasingly using "budget efficiency" as a populist tool to discipline local governments and consolidate central authority. By highlighting [8 billion IDR cars](#) for local officials while he uses domestic vehicles, he is framing his administration as the defender of the "common man." This trend suggests a coming period of [aggressive fiscal audits](#) and potentially more centralized control over regional spending under the guise of national transformation.

Pragmatic Energy Transition: Unlike previous aspirational targets, the current energy shift is framed as a [survival necessity](#) driven by global war. The focus is not on environmentalism but on [energy sovereignty](#) (swasembada energi). This shift is likely to accelerate domestic mining for EV batteries and solar components, as the state views dependency on global oil as an existential threat to its [social stability](#).

Controlled Digital Space: The restriction of [social media for minors](#) combined with the

President's comments on "hoaxes" and "false flag operations" indicates a hardening stance on digital sovereignty. The state is attempting to reclaim the narrative from [social media discourse](#) which it views as a potential source of "social unrest" and foreign manipulation.

STRATEGIC FORESIGHT

Short Term (1-4 Weeks): Indonesia will experience significant social friction due to the [split Eid dates](#), potentially affecting workplace attendance and local market stability. The peak of Mudik will continue to strain fuel supplies, while the [WFH policy](#) will likely be extended if traffic congestion does not ease significantly after the holiday. Enforcement of the March 28 social media age limit will likely face initial technical and [compliance challenges](#).

Medium Term (1-6 Months): The [deregulation of fertilizers](#) should ideally impact the mid-2026 harvest cycle, providing a test case for Prabowo's efficiency drive. We can expect more "sidak" (surprise inspections) of [government kitchens](#) and local offices as the President seeks to show visible results of his anti-corruption and anti-waste stance. Geopolitically, Indonesia may formalize its [peacekeeping offer](#) as the "Board of Peace" framework for Gaza matures.

Long Term (1-5 Years): Structural changes in the industrial sector are intended to move Indonesia away from "deindustrialization" toward [high-value processing](#). If successful, the mandate for electric tractors and [domestic solar grids](#) will fundamentally decouple the Indonesian economy from Middle Eastern energy dependencies. However, the success of this depends on the state's ability to maintain [coalition cohesion](#), particularly with the PDI-P.

RECOMMENDATIONS & IMPLICATIONS

For International Policy:

- Diplomats should prepare for a more [transactional and skeptical](#) Indonesian foreign policy that prioritizes "common sense" realism over traditional multilateral norms.
- The "Two-State Solution" advocacy for Palestine is now a core pillar of [Indonesian statecraft](#), linked to domestic religious legitimacy.
- International observers must monitor the ["false flag" narrative](#) as it may signal a proactive strategy to delegitimize domestic dissent by labeling it as foreign intelligence operations.

For Private Sector/Investors:

- Significant opportunities exist in [solar energy and EV conversion](#) infrastructure, provided firms can align with the administration's "domestic processing" (downstreaming) requirements.
- Supply chain managers should note the [integration of the Cisem 2 gas project](#), which will lower energy costs for industries in Central Java and Banten.
- Tech companies and platforms must urgently review compliance with [age-verification and content-moderation](#) laws as Indonesia moves toward more restrictive digital sovereignty policies.

ABOUT THIS REPORT

Today's Media Trends is a public interest experiment in applying deep thematic trend analysis to television news coverage from

around the world to explore how responsibly applied advanced AI can help journalists and scholars better understand the overarching trends, themes and patterns of our global world.

No data is used to train or tune any AI model.

Each morning, in collaboration with the Internet Archive's TV News Archive, we apply Google's Gemini 3 to deeply examine yesterday's coverage from each television news channel to tease out the overarching themes and trends of its news coverage into a richly annotated thematic analysis. Each high-level insight is connected back to the original broadcast, allowing journalists and scholars to understand the dominate themes and trends and instantly click out to the underlying sources for details.

By helping journalists and scholars see the broader trends and patterns of global news coverage, this analysis helps them identify relevant stories and coverage they might not otherwise have encountered and uncover connections, emphases and narrative shifts that enable more comprehensive reporting and deeper, evidence-based research.

This report is entirely machine generated using Gemini 3 and may include errors and omissions. Please verify all findings. No data is used to train or tune any AI model.

For questions or suggestions, please contact kalev.leetaru5@gmail.com. You can also learn more about the GDELT Project at <https://blog.gdeltproject.org/> and the Internet Archive's TV News Archive at <https://archive.org/details/tv>.