

TODAY'S MEDIA TRENDS

KSTS

APRIL 30, 2026

THE GDELT PROJECT

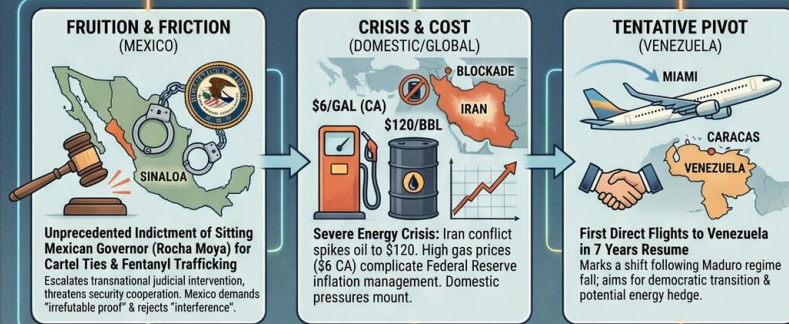
WESTERN HEMISPHERE IN FLUX:

U.S. Strains Under Diplomatic Paradox, Domestic Pressures, and Global Energy Crisis

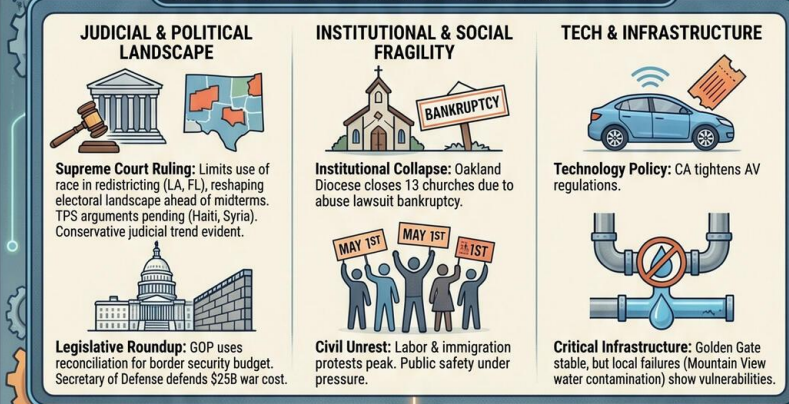
REPORT: A Pivotal Juncture – April 30, 2026

A Combined Story of Aggressive Law Enforcement, Tentative Normalization, and Severe Economic Strain.

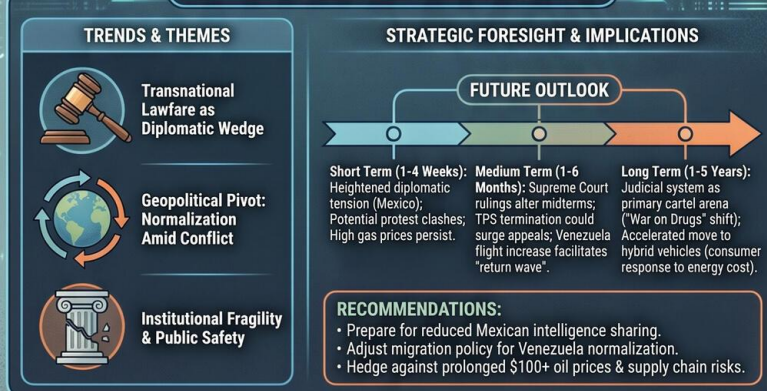
DAY-AT-A-GLANCE: THE PARADOX



MAJOR DEVELOPMENTS & GOVERNANCE CHALLENGES



DEEP DIVE: TRENDS & STRATEGIC FORESIGHT



TODAY'S MEDIA TRENDS

KSTS

APRIL 30, 2026

DIPLOMATIC RELATIONS AND DOMESTIC GOVERNANCE ARE STRAINED AS THE U.S. INDICTS A SITTING MEXICAN GOVERNOR FOR CARTEL TIES WHILE SIMULTANEOUSLY RESUMING DIRECT FLIGHTS TO VENEZUELA AND NAVIGATING A GLOBAL ENERGY CRISIS.

DAY-AT-A-GLANCE

April 30, 2026, marks a pivotal juncture in Western Hemisphere relations, characterized by a paradox of aggressive law enforcement against Mexican corruption and tentative normalization of ties with Venezuela. The U.S. Department of Justice has taken the unprecedented step of charging a sitting Mexican Governor, Rubén Rocha Moya of Sinaloa, with collaborating with the Sinaloa Cartel to traffic massive quantities of fentanyl and other narcotics. This move, which includes charges against several other high-ranking officials from the ruling Morena party, signals a significant escalation in transnational judicial intervention and threatens to destabilize U.S.-Mexico security cooperation.

Simultaneously, the first direct commercial flight from Miami to Caracas in seven years departed this morning, marking a tangible shift in U.S.-Venezuela relations following the fall of the Maduro regime and the move toward democratic transition. While regional diplomacy shifts, domestic pressures are mounting due to a severe energy crisis. Global oil prices have spiked to \$120 per barrel—levels not seen in four years—driven by the ongoing conflict in Iran, which has already cost the U.S. approximately \$25 billion. These costs are manifesting at the pump, with California gas prices nearing \$6 per gallon, further complicating the Federal Reserve's efforts to manage inflation while maintaining steady interest rates.

On the judicial front, the U.S. Supreme Court has issued a significant ruling on redistricting in Louisiana, limiting the use of race as a factor in drawing congressional boundaries. This decision, alongside pending arguments regarding the Temporary Protected Status (TPS) for Haitian and Syrian migrants, underscores a conservative judicial trend that could reshape the electoral landscape and immigration policy ahead of the midterm elections. Domestically, public safety and institutional trust remain under pressure, evidenced by the bankruptcy-driven closure of 13 Catholic churches in Oakland and the arrest of a security official for child abuse in Palo Alto.

MAJOR DEVELOPMENTS

Indictment of Sinaloa Governor Rubén Rocha Moya

- The U.S. Attorney for the Southern District of New York and the DEA announced charges against [Governor Rubén Rocha Moya](#) and nine other Mexican officials for drug trafficking and illegal weapons possession.
- The indictment alleges that Rocha Moya and others accepted bribes from the [Sinaloa Cartel to facilitate](#) the shipment of fentanyl, heroin, cocaine, and methamphetamine into the United States.
- Mexican President Claudia Sheinbaum has demanded "irrefutable proof" while maintaining that her government [will not accept foreign interference](#) or cover up criminal acts.

Normalization of U.S.-Venezuela Air Travel

- American Airlines Flight 3599 marked the first [direct commercial connection](#) between Miami and Caracas in seven years, following a long period of diplomatic isolation.
- The resumption of flights is seen as a symbolic and practical step in [restoring bilateral relations](#) as Venezuela undergoes political transformation.
- Additional airlines, including the Venezuelan carrier Laser, are expected to [begin direct routes](#) imminently, increasing competition and lowering travel costs.

Supreme Court Ruling on Redistricting

- The Supreme Court ruled 6-3 that Louisiana's congressional map [constituted racial gerrymandering](#), effectively limiting the ability to draw districts based primarily on racial criteria.
- This ruling impacts the "Voting Rights Act" protections and forces the state to [design an entirely new map](#) before the upcoming midterm elections.
- The decision aligns with a similar map approval in Florida [pushed by Governor Ron DeSantis](#), which demote democratic representation for minorities.

Energy Crisis and Inflationary Pressures

- Oil prices have surged past [\\$120 per barrel](#) due to the war in Iran and continued blockades in the Strait of Hormuz.
- Gas prices in California have reached a [staggering \\$6 per gallon](#), with the national average hitting \$4.30.
- The Federal Reserve maintained interest rates between [3.50% and 3.75%](#), citing elevated inflation and low job creation as primary concerns.

KEY GOVERNANCE TOPICS

Corruption & Governance The indictment of Sinaloa's Governor is a watershed moment in U.S.-Mexico relations. The U.S. is utilizing its judicial system to target high-level foreign officials currently in power, which could lead to a [breakdown in diplomatic trust](#) and cross-border cooperation. Domestically, the Oakland Catholic Diocese is [closing 13 churches](#) following a bankruptcy filing caused by over

330 child sexual abuse lawsuits, illustrating a collapse in institutional governance and financial viability. Additionally, the fraud and bribery case against former Oakland Mayor [Sheng Thao continues](#) to move toward a trial in October.

Energy & Economic Security U.S. economic security is being challenged by the prolonged conflict in Iran. The Secretary of Defense testified that the [cost of the war](#) has reached \$25 billion in just two months. This military expenditure, coupled with the [rise in petroleum prices](#), is directly impacting consumer spending and logistical costs across the nation. In San Francisco, residents are facing a significant [increase in water rates](#) to fund aging infrastructure repairs, further straining household budgets.

Civil Unrest & Social Order Tensions regarding labor rights and immigration are peaking ahead of May 1st (International Workers' Day). Organizations in Oakland are calling for [paralyzing the local economy](#) and staging massive protests to demand better guarantees for immigrant workers. Meanwhile, the city of Oakland is implementing controversial [barriers on International Boulevard](#) to combat sex work involving minors, reflecting a struggle to maintain social order in high-crime corridors.

National Security & Lawfare Legal proceedings against [Colle Thomas Allen](#), the suspect in the attempted assassination of President Trump at the White House Correspondents' Dinner, reveal significant security breaches. Prosecutors presented evidence of [extensive internet searches](#) and a pre-attack selfie showing the suspect armed with knives and ammunition. In a separate case of lawfare, former FBI Director [James Comey appeared in court](#) for allegedly

threatening the President via a coded social media image.

Technology Policy & Critical Infrastructure California is tightening regulations on autonomous vehicles, with the DMV announcing that companies like Waymo will now [receive violation notices](#) for traffic infractions. Regarding critical infrastructure, engineers have analyzed the [Golden Gate Bridge's stability](#), concluding it is unlikely to collapse like the Baltimore bridge due to multiple layers of protective design. However, local infrastructure failures are evident in Mountain View, where [bacterial contamination of water](#) pipes has left residents without potable water for six days.

LEGISLATIVE ROUNDUP

Legislative activity this week has focused heavily on budgetary allocations for border security and regional infrastructure adjustments. Republican lawmakers are successfully using reconciliation processes to bypass democratic opposition on immigration spending.

BILLS DISCUSSED/DEBATED:

- **Border Security Budget (House of Representatives):** A budget package designed to mobilize tens of billions of dollars for [ICE and the Border Patrol](#) to enforce immigration laws. It passed via reconciliation with simple majority support.
- **Stanislaus County Altar Regulation:** New regulations approved to limit [roadside memorials and shrines](#) on county roads to maintain visibility and safety.

- **California Pool Safety Law (Post-San Jose Drowning):** Legislation requiring [secondary barriers and alarms](#) in home-based daycares with pools following a fatal incident.

HEARINGS & PRESS EVENTS:

- **Secretary of Defense Testimony:** Secretary Austin defended the military budget and [costs associated with the Iran conflict](#), specifically addressing the impact on fuel prices.
- **Supreme Court Hearing on TPS:** The court heard arguments regarding the legality of ending [Temporary Protected Status](#) for migrants from Haiti and Syria, which could set a precedent for over 200,000 Salvadorans.
- **Trump-Artemis II Astronaut Event:** President Trump hosted the [Artemis II crew](#) at the White House, reinforcing national space policy goals.

DEEP DIVE: TRENDS AND THEMES

Transnational Law Enforcement as a Diplomatic Wedge The U.S. is increasingly using its domestic courts to project power into Mexican internal politics. By indicting a sitting Governor from the ruling party, the U.S. DOJ is bypassing traditional diplomatic channels to address the fentanyl crisis. This suggests a shift toward a more confrontational "lawfare" strategy where criminal indictments serve as a tool of foreign policy to pressure neighboring states into compliance on drug interdiction. The Mexican response—demanding proof while rejecting "interference"—points toward a period of high friction in the bilateral security architecture.

Geopolitical Pivot: Normalization Amid Conflict While the U.S. remains deeply entangled in a costly conflict in the Middle East, it is moving to stabilize its own hemisphere by re-opening doors to Venezuela. The resumption of flights represents an "energy and migration" pivot; by normalizing relations, the U.S. seeks to mitigate the regional migration crisis and potentially tap into Venezuelan oil reserves as a hedge against Middle Eastern volatility. The presence of high-profile journalists on the [first flight to Caracas](#) underscores the high stakes of this re-engagement.

Institutional Fragility and Public Safety There is a burgeoning trend of institutional collapse at the local level. The [bankruptcy of the Oakland Diocese](#) due to sexual abuse scandals is a literal "closing of the doors" for community pillars. This, combined with the [cutting of San Francisco's community ambassador program](#) due to budget deficits, suggests that city and religious institutions are no longer capable of maintaining the social safety net, leading to increased reliance on private security and a general degradation of public order.

STRATEGIC FORESIGHT

Short Term (1-4 Weeks): Expect heightened diplomatic tension between D.C. and Mexico City as the extradition request for Governor Rocha Moya is processed. The May 1st protests in Oakland and San Francisco could see significant participation and potential clashes if the "economic paralysis" calls are fully realized. Gas prices are likely to remain at current peaks as the Iran conflict shows no signs of de-escalation.

Medium Term (1-6 Months): The Supreme Court's rulings on TPS and redistricting will

fundamentally alter the political landscape leading into the midterms. If TPS is terminated, we could see a massive surge in legal appeals and a spike in "mixed-status" family separations. In Venezuela, the increase in flight frequency will facilitate a "return wave" and a potential influx of private U.S. investment as the new government consolidates power.

Long Term (1-5 Years): The U.S. judicial system may become the primary arena for dealing with Mexican cartels, leading to a permanent shift in how the "War on Drugs" is fought—targeting political facilitators rather than just logistics. Economically, the move toward hybrid vehicles (like the [Hyundai Palisade Hybrid](#) and others mentioned) will likely accelerate as a direct consumer response to the current energy crisis, permanently altering U.S. fuel demand patterns.

RECOMMENDATIONS & IMPLICATIONS

For International Policy:

- **Security Architecture:** The U.S. should prepare for a significant reduction in intelligence sharing from Mexican state-level agencies following the Rocha Moya indictment.
- **Regional Migration:** Policy should be adjusted to account for the normalization with Venezuela, which may reduce southward asylum flows but increase the complexity of repatriations and travel documentation.
- **Diplomatic Risk:** The indictment of sitting officials creates a precedent that may lead to retaliatory legal actions against U.S. officials in foreign jurisdictions.

For Private Sector/Investors:

- **Energy Costs:** Logistics and manufacturing sectors must hedge against prolonged \$100+ oil prices as the Strait of Hormuz remains a primary chokepoint.
- **Supply Chain Safety:** Companies operating in Sinaloa and Northern Mexico face increased operational risk as cartel-linked political structures are dismantled, potentially leading to localized power vacuums and violence.
- **Investment Opportunities:** The reopening of Venezuelan air space signals an early-mover opportunity for telecommunications, logistics, and energy infrastructure firms as the country re-integrates into the global economy.

ABOUT THIS REPORT

Today's Media Trends is a public interest experiment in applying deep thematic trend analysis to television news coverage from around the world to explore how responsibly applied advanced AI can help journalists and scholars better understand the overarching trends, themes and patterns of our global world.

No data is used to train or tune any AI model.

Each morning, in collaboration with the Internet Archive's TV News Archive, we apply Google's Gemini 3 to deeply examine yesterday's coverage from each television news channel to tease out the overarching themes and trends of its news coverage into a richly annotated thematic analysis. Each high-level insight is connected back to the original broadcast, allowing journalists and scholars to understand the dominate themes and trends

and instantly click out to the underlying sources for details.

By helping journalists and scholars see the broader trends and patterns of global news coverage, this analysis helps them identify relevant stories and coverage they might not otherwise have encountered and uncover connections, emphases and narrative shifts that enable more comprehensive reporting and deeper, evidence-based research.

This report is entirely machine generated using Gemini 3 and may include errors and omissions. Please verify all findings. No data is used to train or tune any AI model.

For questions or suggestions, please contact kalev.leetaru5@gmail.com. You can also learn more about the GDEL T Project at <https://blog.gdel tproject.org/> and the Internet Archive's TV News Archive at <https://archive.org/details/tv>.