

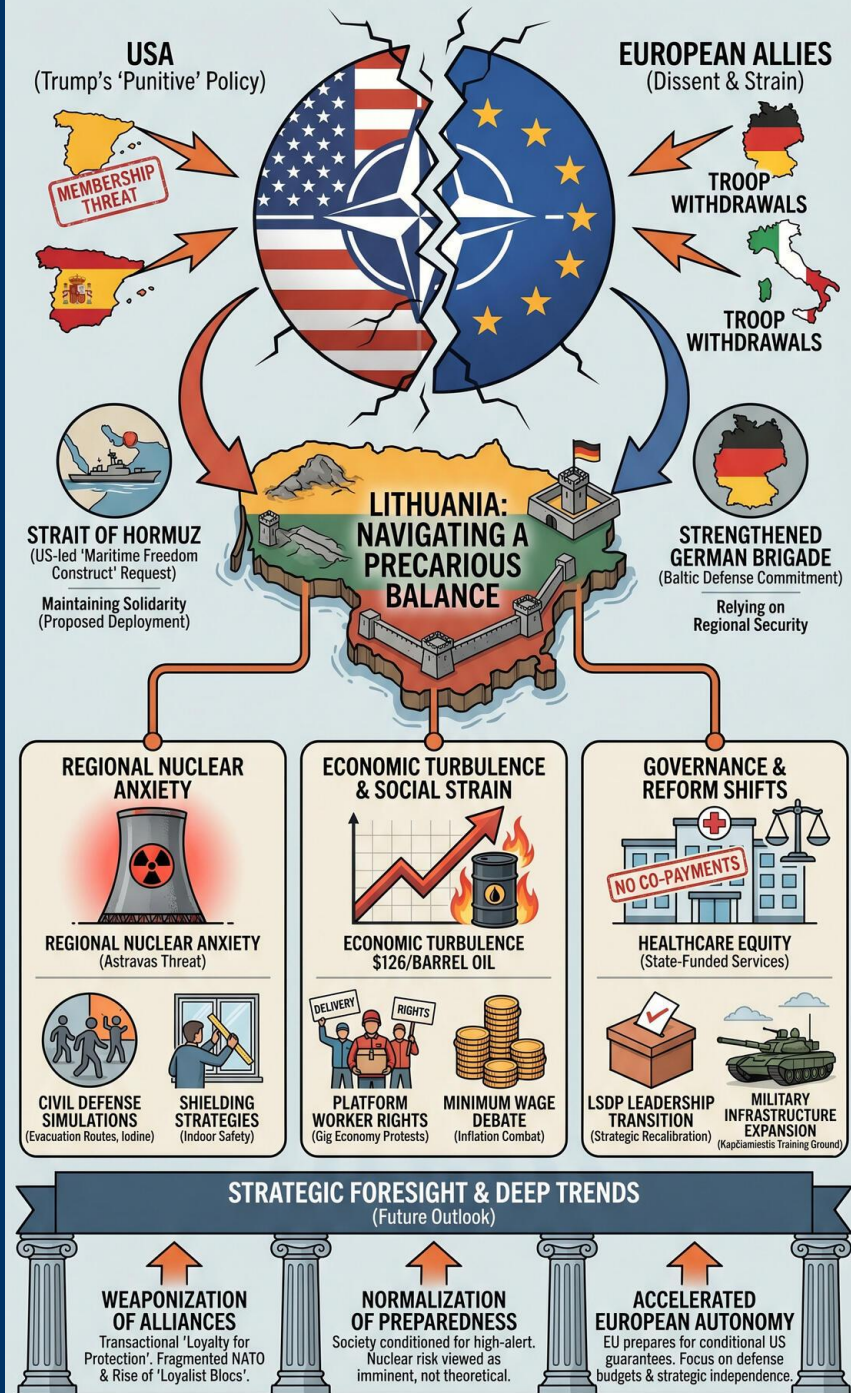
# TODAY'S MEDIA TRENDS

LRT

MAY 1, 2026

T H E G D E L T P R O J E C T

## TRUMP'S BRINKMANSHIP SHATTERS TRANSATLANTIC UNITY: LITHUANIA'S GEOPOLITICAL & DOMESTIC CRISIS (MAY 2026)



# TODAY'S MEDIA TRENDS

LRT

MAY 1, 2026

---

TRUMP'S BRINKMANSHIP  
SHATTERS TRANSATLANTIC UNITY  
AS LITHUANIA NAVIGATES GLOBAL  
ENERGY CRISIS AND REGIONAL  
NUCLEAR FEARS

## DAY-AT-A-GLANCE

---

May 1, 2026, marks a pivotal moment of divergence between the United States and its European allies, as the Donald Trump administration intensifies its "punitive" foreign policy. The day's reports are dominated by threats from Washington to suspend the NATO membership of Spain and withdraw thousands of troops from Germany and Italy, citing their refusal to support American military operations against Iran. This geopolitical fracture coincides with the upcoming NATO summit in Ankara, where the very survival of the alliance's unified front appears at risk. Lithuania finds itself in a precarious position, attempting to maintain solidarity with the U.S. through a proposed deployment to the Strait of Hormuz while simultaneously relying on a strengthening German defense commitment to secure the Baltics.

Domestically, Lithuania is shifting into a high-intensity preparedness posture. National news coverage featured extensive civil defense simulations regarding a potential catastrophe at the Astravas Nuclear Power Plant in Belarus, reflecting deep-seated anxieties over regional nuclear safety. Simultaneously, the governing Social Democrats (LSDP) are undergoing a leadership transition in Jonava, signaling a strategic recalibration ahead of the 2028 elections. Economically, the country is grappling with the fallout of the Middle East crisis, as global oil prices have surged to \$126 per barrel, triggering renewed debates over minimum wage increases and labor protections for gig economy workers.

## MAJOR DEVELOPMENTS

---

### The NATO Membership Crisis

- President Trump has threatened to suspend Spain's NATO membership and withdraw troops from Germany and Italy as [punishment for dissent](#) regarding the U.S. conflict with Iran.
- German Chancellor Friedrich Merz has criticized the lack of a U.S. strategy in Iran, while the U.S. considers [relocating forces](#) to more "loyal" allies like Poland or the Baltic states.
- The international jury for the Venice Biennale resigned in protest of Russia's participation, reflecting broader [cultural-political fractures](#) within the EU.

### Lithuanian National Security and Military Posture

- Lithuania has received a formal request to join the U.S.-led "Maritime Freedom Construct" in the [Strait of Hormuz](#), with a decision expected next week.

- The government is moving forward with the [Kapčiamiestis training ground](#), a new military installation named after Emilija Pliaterytė to accommodate increased allied presence.
- Intensive military training for conscripts and volunteers continues, focusing on [combat readiness](#) in response to Russian aggression.

### Energy and Economic Turbulence

- Global oil prices hit [126 dollars](#) per barrel, the highest since 2022, following reports of new U.S. war plans for Iran.
- The Lithuanian Bank proposed raising the [minimum monthly wage](#) by approximately 74 to 138 euros for 2027 to combat inflation.
- Platform workers (couriers and drivers) staged protests demanding [social guarantees](#) and legal recognition of their labor status.

### Civil Defense and Nuclear Anxiety

- National broadcasters conducted a deep-dive simulation of a [nuclear accident](#) at the Astravas plant, emphasizing evacuation routes and the use of potassium iodide.
- Technical experts advised on [shielding strategies](#), noting that indoor safety depends on distance from exterior walls and the sealing of ventilation systems.

### Health Care Equity Reform

- A new law came into effect [banning co-payments](#) for services already funded by the state budget, aimed at ending "animal farm" style inequality in clinics.

- Private clinics and some doctors warn that the ban may [increase waiting queues](#) as patients lose the ability to pay for faster access.

## KEY GOVERNANCE TOPICS

---

### International Relations & Foreign Policy

- Lithuania is struggling to balance its loyalty to the U.S. with its reliance on [German military leadership](#), particularly the permanent deployment of a German brigade.
- Tensions between the White House and the Holy See have further [strained relations](#) with Italy's leadership.

### National Security & Defense Architecture

- Lithuania is expanding its [military infrastructure](#) (Rūdninkai and Kapčiamiestis) to host more foreign troops, even as the U.S. threatens to shift forces within Europe based on political loyalty.
- Ukraine has launched a [fourth strike](#) in two weeks on Russia's Krasnodar oil terminals, escalating the "war of attrition" on energy infrastructure.

### Elite Politics & Leadership Dynamics

- The Social Democratic Party (LSDP) Congress in Jonava is expected to confirm Mindaugas Sinkevičius as [party chairman](#), with proposals to extend leadership terms to four years to align with the Seimas cycle.
- Internal party dissent persists regarding the [governing coalition](#), with some members criticizing partnerships with controversial figures like Remigijus Žemaitaitis.

## Technology Policy & AI

- Ethical discussions have emerged regarding "General Artificial Intelligence" and the risk of AI [viewing humans as a virus](#) or a hindrance to its existence.
- The state is implementing new [digital labor laws](#) to redefine the relationship between platform companies and self-employed contractors.

## Domestic Stability & Social Order

- A new law [expands rights](#) for people with assistance dogs, granting them access to all public spaces and transportation, though driver resistance remains a concern.
- The high-profile [Kristijonas Bartoševičius case](#) saw an appeal rejected, with the former MP ordered to begin his prison sentence for crimes against children.

## LEGISLATIVE ROUNDUP

---

Legislative activity focused on cementing social equity in healthcare and addressing the evolving labor market, while military policy was pushed through via national security consensus. Press events centered on the LSDP Congress and the Presidential Palace's briefing on Persian Gulf involvement.

### BILLS DISCUSSED/DEBATED:

- **Healthcare Co-payment Ban:** Effective immediately, this law prohibits [extra charges](#) in both private and public clinics for state-covered procedures.
- **Assistance Dog Rights Act:** New regulations [mandate access](#) for service dogs to shops and taxis, including a state compensation scheme for training.

- **Labor Code Amendments (Gig Economy):** Proposed criteria to distinguish between [independent contractors](#) and employees in the platform economy by September.
- **Kapčiamiestis Training Ground Act:** Legislation to [establish a new](#) brigade-sized military polygon, despite some local opposition.

## HEARINGS & PRESS EVENTS:

- **LSDP Congress (Jonava):** Meeting to elect [new party leadership](#) and debate the future of the ruling coalition.
- **Presidential Security Briefing:** Deividas Matulionis discussed the [Pentagon's request](#) for Lithuanian naval cooperation in the Hormuz Strait.
- **Civil Defense "Dienos Tema":** Discussion on the [logistics of evacuation](#) and the effectiveness of potassium iodide in the event of an Astravas leak.

## DEEP DIVE: TRENDS AND THEMES

---

**The Weaponization of Alliance Commitments** The traditional "all for one" ethos of NATO is being replaced by a transactional "loyalty for protection" model driven by the Trump administration. By labeling Spain "terrible" and threatening to [suspend its membership](#), Washington is effectively using the alliance as a cudgel to enforce compliance with non-NATO military objectives in the Middle East. This has created a secondary trend: the rise of "Loyalist Blocs" within Europe (Poland, Baltics) who may benefit from [troop relocations](#) at the expense of traditional partners like Germany and Italy.

**The Normalization of Nuclear Preparedness** Lithuanian society is being systematically conditioned for a nuclear event. The level of detail in state-sponsored "drills"—covering everything from [sealing windows](#) with tape to the weight of evacuation backpacks (20% of body mass)—suggests that the Astravas plant is no longer viewed as a theoretical threat but as an [imminent risk](#). This "preparedness fatigue" may eventually impact domestic property values and regional stability as the 30km-100km danger zones around Vilnius are highlighted.

**The End of "Health Care Dualism"** The ban on co-payments marks a populist shift towards total state control over healthcare pricing. While framed as [social justice](#), it threatens the business model of private clinics that relied on "top-up" fees to stay profitable. The emerging theme is a return to a more rigid, centralized system where [time, rather than money](#), becomes the primary currency for medical access, likely leading to a burgeoning "gray market" or total privatization for the wealthy.

## **STRATEGIC FORESIGHT**

---

### **Short Term (1-4 Weeks)**

- Expect a formal Lithuanian announcement regarding the Hormuz Strait [naval contribution](#), likely involving logistics or mine-clearing assets.
- Immediate disruptions to [train services](#) following the Kėdainiai derailment will impact freight transport between Vilnius and the Klaipėda port for at least 12-24 hours.

### **Medium Term (1-6 Months)**

- The NATO Summit in Ankara (July 7-8) will be a [diplomatic flashpoint](#), potentially resulting in a "two-tier" NATO if Trump follows through on suspending Spain or withdrawing from Germany.
- The Social Democrats under Sinkevičius will likely [renegotiate coalition terms](#), potentially purging "unreliable" partners to stabilize the government ahead of the 2028 cycle.

### **Long Term (1-5 Years)**

- Europe will likely accelerate its "Strategic Autonomy" projects, as evidenced by Germany's [110 billion euro](#) defense budget, preparing for a future where U.S. security guarantees are conditional.
- The transition to [gig economy labor protections](#) will likely set a regional precedent for the Baltics, forcing platform companies to restructure their business models or exit the market.

## **RECOMMENDATIONS & IMPLICATIONS**

---

### **For International Policy:**

- Diplomats should prepare for a [fragmented NATO](#) where bilateral "loyalty agreements" with the U.S. may supersede collective treaty obligations.
- The Pakistan-mediated [Iran peace proposal](#) requires urgent European support to prevent a total collapse of the current ceasefire and a return to \$150+ oil prices.

- EU members must address the [funding and legitimacy](#) of cultural institutions like the Venice Biennale, which are becoming battlegrounds for the Russia-Ukraine conflict.

#### **For Private Sector/Investors:**

- **Energy Risk:** High oil prices ([\\$126/barrel](#)) will drive inflation in the transport and logistics sectors; hedging strategies are essential for Baltic exporters.
- **Healthcare Sector:** Investors in private Lithuanian clinics must [re-evaluate revenue models](#) following the co-payment ban; growth may shift toward purely elective, non-state-funded services.
- **Real Estate/Infrastructure:** Continued [administrative deadlocks](#) in new housing developments (e.g., Vanilla Villa) highlight the need for rigorous due diligence on utility handover status before acquisition.

## **ABOUT THIS REPORT**

---

**Today's Media Trends** is a public interest experiment in applying deep thematic trend analysis to television news coverage from around the world to explore how responsibly applied advanced AI can help journalists and scholars better understand the overarching trends, themes and patterns of our global world.

### **No data is used to train or tune any AI model.**

Each morning, in collaboration with the Internet Archive's TV News Archive, we apply Google's Gemini 3 to deeply examine yesterday's coverage from each television news channel to tease out the overarching themes and trends of its news coverage into a richly annotated thematic analysis. Each high-level insight is connected back to the original broadcast, allowing journalists and scholars to understand the dominate themes and trends and instantly click out to the underlying sources for details.

By helping journalists and scholars see the broader trends and patterns of global news coverage, this analysis helps them identify relevant stories and coverage they might not otherwise have encountered and uncover connections, emphases and narrative shifts that enable more comprehensive reporting and deeper, evidence-based research.

This report is entirely machine generated using Gemini 3 and may include errors and omissions. Please verify all findings. No data is used to train or tune any AI model.

For questions or suggestions, please contact [kalev.leetaru5@gmail.com](mailto:kalev.leetaru5@gmail.com). You can also learn more about the GDEL Project at <https://blog.gdelproject.org/> and the Internet Archive's TV News Archive at <https://archive.org/details/tv>.