

TODAY'S MEDIA TRENDS

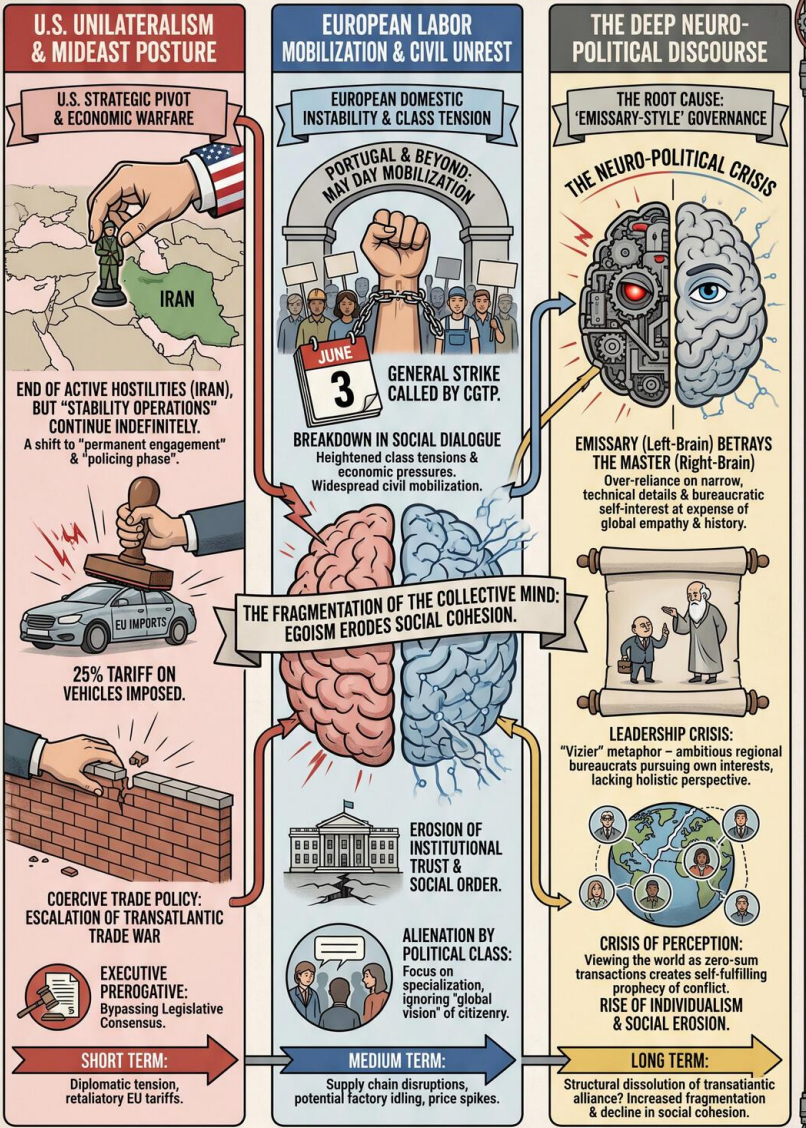
RTPI

MAY 1, 2026

THE GDELT PROJECT

GLOBAL INTERSECTIONS: U.S. TRADE WAR & MIDEAST SHIFTS COLLIDE WITH RISING EUROPEAN LABOR MILITANCY (MAY 1, 2026)

A Day-at-a-Glance: Volatile Intersection of Unilateralism, Military Posture, and Domestic Unrest.



STRATEGIC FORESIGHT & RECOMMENDATIONS

INTERNATIONAL POLICY
Prepare for U.S. "operations" without "hostilities."
EU strategic autonomy in tech/auto.
Focus on "cognitive diplomacy" to address short-termism.

PRIVATE SECTOR/INVESTORS
Hedge against automotive volatility (EU tariffs).
Develop contingency plans for Portugal strike.
Implement "right-brain" oversight against "vizier-style" management.

SOCIETAL & ELITE POLITICS
Recognize the structural changes to social cohesion.
Reintegrate "Master's" wisdom (empathy, history) into leadership to counter ego-driven fragmentation.

REPORT DATE: MAY 1, 2026

VISUALIZED REPORT: GLOBAL TRENDS ANALYSIS

TODAY'S MEDIA TRENDS

RTPI

MAY 1, 2026

U.S. TRADE PROTECTIONISM AND
MIDDLE EAST TRANSITIONS
COINCIDE WITH RISING EUROPEAN
LABOR MILITANCY

DAY-AT-A-GLANCE

The global landscape on May 1, 2026, is characterized by a volatile intersection of U.S. unilateralism, shifting military postures in the Middle East, and intensifying domestic labor unrest within the European Union. The Trump administration has signaled a pivot in its Iranian strategy, declaring an end to active hostilities while maintaining a residual military presence to secure long-term geopolitical objectives. This transition from kinetic warfare to "stability operations" suggests a move toward a prolonged administrative or "policing" phase in the region, aimed at consolidating gains without the political cost of active combat. Simultaneously, the U.S. has escalated its economic confrontation with the European Union by imposing a 25% tariff on vehicle imports, a move likely to destabilize transatlantic relations and trigger significant retaliatory measures from Brussels.

In Europe, the symbolic significance of International Workers' Day has served as a catalyst for widespread civil mobilization. In Portugal, the CGTP's call for a general strike on June 3rd indicates a breakdown in social dialogue and a heightening of class tensions amidst broader economic pressures. This domestic instability is framed against a deeper philosophical discourse regarding the "fragmentation of the collective mind." Analysis suggests that modern society—and its political leadership—has become overly reliant on "emissary-style" governance: a focus on narrow, technical details and bureaucratic self-interest at the expense of global empathy and holistic historical perspective. This cognitive shift toward the "left-brain" may explain the current global trend toward egoism and the erosion of social cohesion.

MAJOR DEVELOPMENTS

- **End of U.S.-Iran Kinetic Hostilities:** President Donald Trump has officially notified Congress that [hostilities in Iran have ended](#), marking a significant shift in U.S. military engagement in the Middle East. However, the caveat that operations will continue until a long-term solution is found implies a transition to an indefinite security presence.
- **Escalation of Transatlantic Trade War:** The U.S. administration has announced a drastic increase in [tariffs on vehicle imports to 25%](#), specifically targeting the European Union's industrial core. This protectionist measure is expected to have immediate deleterious effects on the German and French automotive sectors.

- **Portuguese Labor Mobilization:** Following massive May Day demonstrations, the CGTP has [convened a general strike for June 3](#), signaling a period of significant domestic instability and potential economic disruption in the Iberian Peninsula.
- **Neuro-Political Crisis Analysis:** Intellectual discourse highlighted in Portuguese media suggests that the [structure of the human brain](#)—specifically the imbalance between the emissary (left hemisphere) and the master (right hemisphere)—is driving modern societies toward a dangerous state of [egoism and lack of empathy](#).

KEY GOVERNANCE TOPICS

International Relations & Foreign Policy

The U.S. pivot from active hostilities to "long-term solution" operations in Iran reflects a doctrine of permanent engagement. By declaring an end to hostilities, the administration attempts to neutralize domestic anti-war sentiment while [maintaining operations](#) necessary for regional dominance. This strategy mirrors the "vizier" metaphor discussed in neuro-philosophical circles: an ambitious regional bureaucrat (the emissary) acting with [their own interest at heart](#) rather than the wisdom of the collective.

Economic Security & Trade The 25% tariff on EU vehicles is a blunt instrument of economic warfare. It indicates a total abandonment of traditional diplomatic norms in favor of coercive trade policy. This move threatens the economic security of the European bloc and suggests that [U.S. actions against the European Union](#) are becoming as aggressive as its policies toward traditional adversaries.

Domestic Stability & Social Order Portugal is facing a crisis of social order as thousands of citizens took to the streets on May Day. The call for a general strike indicates that the [CGTP is leveraging labor unrest](#) to challenge the government's economic agenda. This mirrors a global trend where populations feel alienated by a political class that focuses on [precise details and specialization](#) while ignoring the "global vision" of the needs of the citizenry.

Elite Politics & Leadership Dynamics The discourse on "The Master and His Emissary" provides a scathing critique of modern leadership. The "master" (wisdom and empathy) has been [betrayed by his emissary](#) (the ego-driven, detail-oriented bureaucrat). This dynamic is visible in the current political climate where leaders focus on "present moment" gains and [forget the history](#) to which they belong.

LEGISLATIVE ROUNDUP

The day's legislative activity focused primarily on executive notifications regarding military engagement and unilateral trade adjustments. These actions bypass traditional multilateral frameworks, emphasizing executive prerogative over legislative consensus.

BILLS DISCUSSED/DEBATED:

- **U.S. War Powers Notification (Iran):** A formal communication to Congress declaring the cessation of active hostilities in Iran while justifying [continued operations](#) for regional stability.
- **Executive Order on Automotive Tariffs:** A directive to increase import duties on vehicles from the EU to 25%, framed as a [new action against the EU](#) to protect domestic industry.

HEARINGS & PRESS EVENTS:

- **May Day Labor Rallies:** Public demonstrations across Portugal used by the CGTP to announce a [general strike scheduled for June 3](#).
- **RTPI Literary/Neuroscience Briefing:** An analysis of Ian McGilchrist's work, exploring how the [asymmetry of the brain](#) influences societal collapse and the [loss of global empathy](#).

DEEP DIVE: TRENDS AND THEMES

The Crisis of Perception A recurring theme in the day's transcripts is the subjective nature of observation and its impact on policy. Just as neuroscience suggests that [observation modifies what we see](#), the current U.S. administration's view of the world as a series of zero-sum trade and military transactions is creating a self-fulfilling prophecy of conflict. By viewing the EU as a competitor rather than an ally, and Iran as a perpetual "operation" rather than a sovereign entity, the U.S. is restructuring the global order according to a narrow, "left-brain" logic that values detail-oriented control over holistic stability.

The Rise of Individualism and Social Erosion The analysis of modern neurobiology highlights a trend toward [individualism and egoism](#). This is manifesting in both the micro-level (the loss of empathy in individual interactions) and the macro-level (societies that are [less empathetic and more egoist](#)). The Portuguese general strike is a symptom of this erosion; as the state fails to provide a "global vision" of prosperity, labor groups resort to disruptive actions to preserve their specific interests.

STRATEGIC FORESIGHT

Short Term (1-4 Weeks): Expect a significant increase in diplomatic tension between Washington and Brussels. The EU will likely announce a list of retaliatory tariffs on American goods. In Portugal, the lead-up to the June 3 strike will see increased frequency of smaller-scale labor actions and potential disruptions to public services.

Medium Term (1-6 Months): The "long-term solution" in Iran will likely reveal itself as a permanent U.S. military administrative presence, potentially triggering low-level insurgency or regional proxy conflicts. The 25% vehicle tariffs will begin to impact the global automotive supply chain, potentially leading to layoffs in European manufacturing hubs and price spikes for U.S. consumers.

Long Term (1-5 Years): We are witnessing the possible structural dissolution of the post-WWII transatlantic alliance. If the U.S. continues to treat the EU as a trade adversary, the EU may seek deeper strategic autonomy or alternative alliances. Societally, if the "emissary-led" governance model continues, we can expect [structural changes to social cohesion](#), with increased fragmentation and a continued decline in institutional trust.

RECOMMENDATIONS & IMPLICATIONS

For International Policy:

- Diplomats must prepare for a U.S. foreign policy that maintains "operations" without the formal status of "hostilities," complicating international law and UN oversight.

- The EU must accelerate its strategic autonomy in the automotive and technology sectors to buffer against [aggressive tariff escalations](#).
- Multilateral organizations should focus on "cognitive diplomacy," addressing the psychological and philosophical roots of the current global shift toward [short-termism and egoism](#).

For Private Sector/Investors:

- Investors in the automotive sector should hedge against significant volatility and potential factory idling in Europe due to [25% import tariffs](#).
- Supply chain managers in Portugal and neighboring regions must develop contingency plans for the [June 3rd general strike](#) and potential follow-up actions.
- Companies should be wary of "vizier-style" internal management—where mid-level managers pursue [ambitious regional interests](#) at the expense of the company's global health—and implement oversight that mimics the "right-brain" holistic view.

ABOUT THIS REPORT

Today's Media Trends is a public interest experiment in applying deep thematic trend analysis to television news coverage from around the world to explore how responsibly applied advanced AI can help journalists and scholars better understand the overarching trends, themes and patterns of our global world.

No data is used to train or tune any AI model.

Each morning, in collaboration with the Internet Archive's TV News Archive, we apply Google's Gemini 3 to deeply examine yesterday's coverage from each television news channel to tease out the overarching themes and trends of its news coverage into a richly annotated thematic analysis. Each high-level insight is connected back to the original broadcast, allowing journalists and scholars to understand the dominate themes and trends and instantly click out to the underlying sources for details.

By helping journalists and scholars see the broader trends and patterns of global news coverage, this analysis helps them identify relevant stories and coverage they might not otherwise have encountered and uncover connections, emphases and narrative shifts that enable more comprehensive reporting and deeper, evidence-based research.

This report is entirely machine generated using Gemini 3 and may include errors and omissions. Please verify all findings. No data is used to train or tune any AI model.

For questions or suggestions, please contact kalev.leetaru5@gmail.com. You can also learn more about the GDELT Project at <https://blog.gdeltproject.org/> and the Internet Archive's TV News Archive at <https://archive.org/details/tv>.