

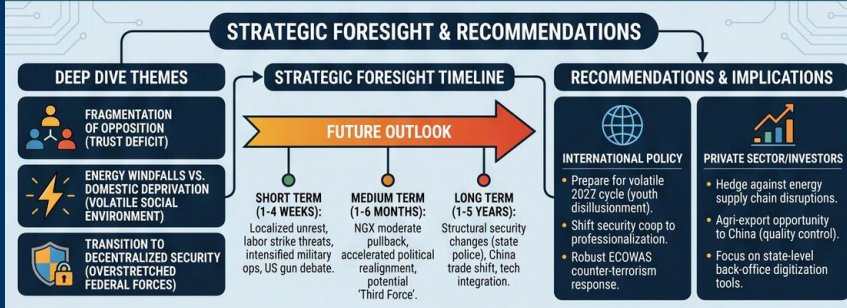
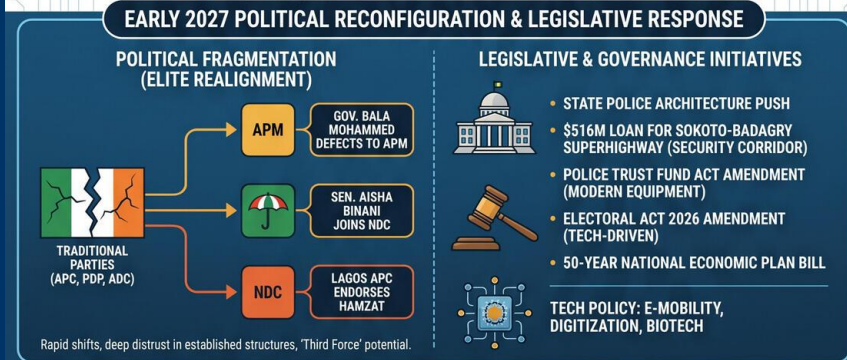
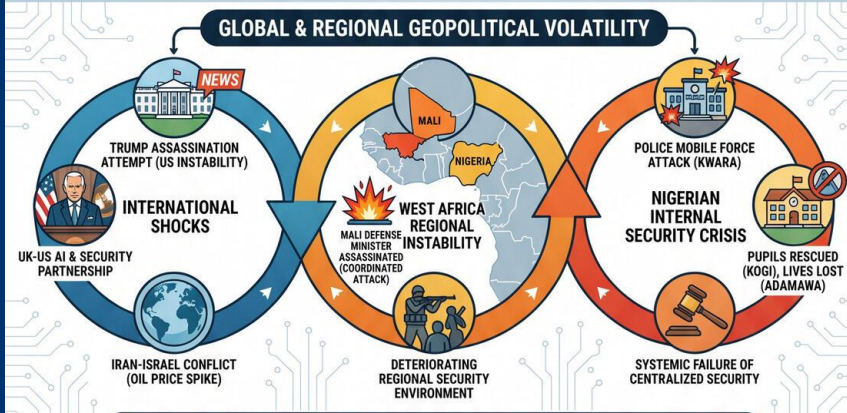
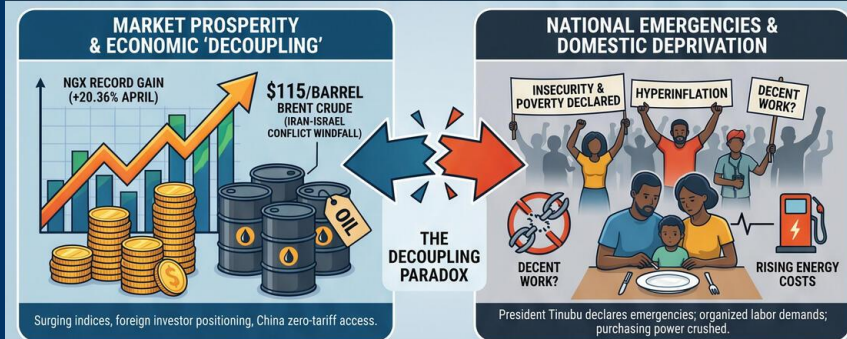
TODAY'S MEDIA TRENDS

CHANNELSTV

MAY 2, 2026

THE GDELT PROJECT

THE PARADOX OF MARKET PROSPERITY AMIDST NATIONAL EMERGENCIES: NIGERIA NAVIGATES SECURITY CRISES AND GEOPOLITICAL VOLATILITY (MAY 2026)



TODAY'S MEDIA TRENDS

CHANNELSTV

MAY 2, 2026

THE PARADOX OF MARKET
PROSPERITY AMIDST NATIONAL
EMERGENCIES: NIGERIA
NAVIGATES SECURITY CRISES AND
GEOPOLITICAL VOLATILITY

DAY-AT-A-GLANCE

May 2, 2026, was defined by a stark contrast between surging financial indices and a deepening domestic security crisis. President Bola Tinubu officially declared [insecurity and poverty](#) as national emergencies during May Day celebrations, acknowledging that these twin crises threaten Nigeria's stability despite the [Nigerian Stock Exchange \(NGX\)](#) recording a record-breaking 20.36% gain in April. This economic "decoupling" is exacerbated by the ongoing Iran-Israel conflict, which has pushed Brent crude to [around \\$115 per barrel](#), providing a fiscal windfall for the government while simultaneously crushing the purchasing power of the average worker through hyperinflation and rising energy costs.

Political maneuvering for the 2027 general elections has begun in earnest, significantly ahead of schedule, leading to the rapid fragmentation of opposition platforms. Significant defections occurred today, with

[Bauchi State Governor Bala Mohammed](#) leaving the PDP for the Allied People's Movement (APM) and former APC governorship candidate [Senator Aisha Binani](#) joining the National Democratic Congress (NDC). These shifts suggest a total reconfiguration of the political landscape as elites abandon traditional parties facing legal and internal crises. Concurrently, the administration is pushing for a [state police architecture](#) to address the systemic failure of the centralized security apparatus.

Internationally, the third [assassination attempt](#) on U.S. President Donald Trump at the White House Correspondents' Association dinner has injected fresh uncertainty into global stability. This event occurred as King Charles III addressed a joint session of the U.S. Congress, emphasizing a [partnership in AI and security](#) amidst shifting Middle Eastern alliances. In West Africa, the assassination of Mali's [Defense Minister Sadio Kamara](#) in a coordinated suicide attack underscores a deteriorating regional security environment that risks spilling across borders and further complicating the ECOWAS security framework.

MAJOR DEVELOPMENTS

Declaration of National Emergencies

- President Tinubu, through the Secretary to the Government of the Federation, declared [insecurity and poverty](#) as immediate national threats during the 2026 Workers Day celebration.
- Organized labor renewed demands for economic justice, insisting that [decent work cannot thrive](#) in an environment of fear and deprivation.

- The government outlined interventions including cash transfers to 15 million households and infrastructure projects claimed to have created [600,000 jobs](#).

Global Geopolitical Volatility and the Trump Assassination Attempt

- A 31-year-old suspect, Cole Thomas Allen, was charged with the [attempted assassination](#) of Donald Trump after a shooting at the Washington Hilton.
- U.S. officials are reviewing security protocols as Trump hints at a potential [military operation in Cuba](#) following the resolution of the war with Iran.
- King Charles III and Queen Camilla continued their state visit to the U.S., with the King calling for [renewed cooperation](#) to stem international conflict.

Regional Instability in West Africa

- Mali's Defense Minister was killed in a [coordinated suicide attack](#) in Kati, targeting the army's main base.
- In Nigeria, [29 lives were lost](#) in a bandit attack in Adamawa State, while [17 pupils were rescued](#) following a mass abduction in Kogi State.
- Gunmen attacked a [police mobile force camp](#) in Kwara State, killing three officers.

Early 2027 Political Realignment

- Governor Bala Mohammed defected to the [Allied People's Movement \(APM\)](#), citing the need for a viable platform for his supporters.
- APC leadership in Lagos endorsed [Deputy Governor Kadri Hamzat](#) for the 2027 governorship race with President Tinubu's blessing.

- The African Democratic Congress (ADC) is facing a [leadership crisis](#) following Supreme Court rulings regarding its national structure.

Market Resilience and Energy Inflation

- The NGX All-Share Index outperformed previous months with a [20.36% gain in April](#), driven by oil and gas stocks and foreign investor positioning.
- The Lagos Chamber of Commerce (LCCI) warned that [surging energy prices](#) due to the Iran conflict are threatening fiscal stability and food security.
- China implemented [zero-tariff access](#) for Nigeria and 52 other African nations to deepen trade ties.

KEY GOVERNANCE TOPICS

Security Architecture and Rule of Law

- The Senate approved a [\\$516 million loan](#) to fund the Sokoto-Badagry superhighway, categorized as a strategic security and economic corridor.
- Inspector General of Police has warned officers against [impunity and professional recklessness](#), following high-profile extrajudicial killings.
- Former Minister Solomon Dalong criticized the government for failing to [prosecute identified perpetrators](#) of communal violence in Plateau State.

Elite Politics and Leadership Dynamics

- Ebonyi State APC adopted [consensus candidates](#) for all elective positions for 2027, a move criticized by some as undermining internal democracy.

- A "cabal" within the previous Buhari administration was [accused of hijacking governance](#), with former ministers warning that similar dynamics may persist in the current cabinet.
- The revival of the 2018 [Offa bank robbery case](#) involving allegations against Bukola Saraki is being labeled by supporters as political propaganda.

Food and Water Security

- FAO and WMO reports warn that [extreme heat](#) is pushing global agri-food systems to the brink, with worker productivity dropping 2-3% for every degree above 2°C.
- Rwanda is [imposing jail terms](#) on developers who encroach on agricultural land to protect its shrinking food supply.
- Imo State has flagged off [365 new water schemes](#) to provide safe water across autonomous communities.

Technology Policy and Digital Sovereignty

- The Federal Capital Territory is launching an [e-mobility initiative](#) to introduce electric vehicles and charging hubs in Abuja.
- Experts are calling for [full back-office digitization](#) of government agencies to eliminate the "manual-digital loop" that fosters corruption.
- The Nigerian government is being urged to [master biotechnology and gene editing](#) to combat climate-induced crop failures.

LEGISLATIVE ROUNDUP

Legislative activity centered on expanding the funding base for national security and modernizing the electoral process. The Senate and House are moving toward greater integration of technology in both policing and

judicial proceedings, while simultaneously approving massive foreign loans for infrastructure projects that double as security corridors.

BILLS DISCUSSED/DEBATED:

- **Police Trust Fund Act (Amendment) Bill:** Proposes increasing the [statutory allocation from 0.5% to 1%](#) of total revenue and establishing permanent status for the fund to ensure modern equipment acquisition.
- **Electoral Act 2026 (Amendment) Bill:** Aims to provide for [flexible and technology-driven](#) service of election petition processes to reduce judicial delays.
- **50-Year National Economic Plan Bill:** Seeks to establish [long-term economic stability](#) and sustainable development through a statutory framework.

HEARINGS & PRESS EVENTS:

- **Senate Loan Approval:** The Senate Committee on Local and Foreign Debts approved a [\\$516 million loan](#) from Deutsche Bank for the Sokoto-Badagry superhighway.
- **NCAA Aviation Safety Briefing:** The NCAA DG detailed reforms shifting from [reactive to proactive oversight](#) following an ICAO audit scoring Nigeria at 70%.
- **LCCI Quarterly Review:** The Lagos Chamber of Commerce criticized the [poor implementation of the budget](#) and the failure to save excess oil earnings.

DEEP DIVE: TRENDS AND THEMES

The Fragmentation of the Opposition The early start to the 2027 cycle reveals a deep

distrust in established party structures. The [defection of Governor Bala Mohammed](#) to the APM is not merely a local shift but a signal that the PDP's national platform may no longer be considered a viable vehicle for elite interests. Similarly, the [leadership crisis in the ADC](#), allegedly influenced by executive interference, suggests that "lawfare" is being used to destabilize opposition parties before they can form a credible coalition.

Energy Windfalls vs. Domestic Deprivation The paradox of the current economic environment is that the very conflict driving global oil prices to [\\$115 per barrel](#) is simultaneously worsening domestic poverty. While the government sees increased revenue, the [rising cost of diesel and petrol](#) has rendered the recently implemented N70,000 minimum wage obsolete before it was even fully realized across all states. This creates a volatile social environment where labor leaders are increasingly skeptical of government promises of "future prosperity."

Transition to a Decentralized Security Model The consistent failure of federal security forces to prevent mass abductions and bandit attacks has shifted the national conversation toward [state-level policing](#). The President's challenge to Plateau leaders to review [past white papers](#) and implement local resolutions suggests a tacit admission that the centralized model is overstretched and ineffective against mobile, non-state armed groups.

STRATEGIC FORESIGHT

Short Term (1-4 Weeks): Expect localized civil unrest or increased labor strike threats as the cost of living continues to climb despite the May Day rhetoric. Security operations in Borno and Kogi will likely intensify as the

military attempts to [recapture escapees](#) and remaining kidnap victims. In the U.S., the fallout from the Allen assassination attempt will likely lead to more [stringent gun legislation](#) debates and a temporary halt to large-scale public campaign events.

Medium Term (1-6 Months): The NGX may see a [moderate pullback](#) or profit-taking after the April surge, though foreign inflows will likely remain strong ahead of the [FTSE Russell index](#) rebalancing in September. Political realignments will accelerate, with the possible emergence of a "Third Force" coalition as the PDP and ADC struggle with legal entanglements.

Long Term (1-5 Years): Structural changes to the security architecture, including the formalization of [state police](#), could lead to a more responsive but fragmented security environment. The [China zero-tariff policy](#) could fundamentally shift Nigeria's trade balance, making the country more dependent on Chinese markets for agricultural exports while potentially hollowing out domestic manufacturing if not managed with protective tariffs.

RECOMMENDATIONS & IMPLICATIONS

For International Policy:

- Diplomatic missions should prepare for a volatile 2027 cycle, as [youth disillusionment](#) with the political class reaches a tipping point.
- Security cooperation with Nigeria must shift focus from equipment sales to [professionalizing police forces](#) to mitigate the rising tide of extrajudicial violence.

- The ECOWAS region must develop a more robust [counter-terrorism response](#) following the assassination of the Malian Defense Minister to prevent a contagion effect.

For Private Sector/Investors:

- Investors in the Nigerian energy sector should hedge against [supply chain disruptions](#) in the Strait of Hormuz, which are keeping prices high but volatile.
- The agricultural sector presents a significant [export opportunity to China](#), but quality control and meeting stringent regulatory standards remain the primary barriers to entry.
- Technology firms should focus on [back-office digitization](#) for state governments as the push for decentralization creates a new market for sub-national governance tools.

ABOUT THIS REPORT

Today's Media Trends is a public interest experiment in applying deep thematic trend analysis to television news coverage from around the world to explore how responsibly applied advanced AI can help journalists and scholars better understand the overarching trends, themes and patterns of our global world.

No data is used to train or tune any AI model.

Each morning, in collaboration with the Internet Archive's TV News Archive, we apply Google's Gemini 3 to deeply examine yesterday's coverage from each television news channel to tease out the overarching themes and trends of its news coverage into a richly annotated thematic analysis. Each high-level insight is connected back to the original broadcast, allowing journalists and scholars to understand the dominate themes and trends and instantly click out to the underlying sources for details.

By helping journalists and scholars see the broader trends and patterns of global news coverage, this analysis helps them identify relevant stories and coverage they might not otherwise have encountered and uncover connections, emphases and narrative shifts that enable more comprehensive reporting and deeper, evidence-based research.

This report is entirely machine generated using Gemini 3 and may include errors and omissions. Please verify all findings. No data is used to train or tune any AI model.

For questions or suggestions, please contact kalev.leetaru5@gmail.com. You can also learn more about the GDELT Project at <https://blog.gdeltproject.org/> and the Internet Archive's TV News Archive at <https://archive.org/details/tv>.