

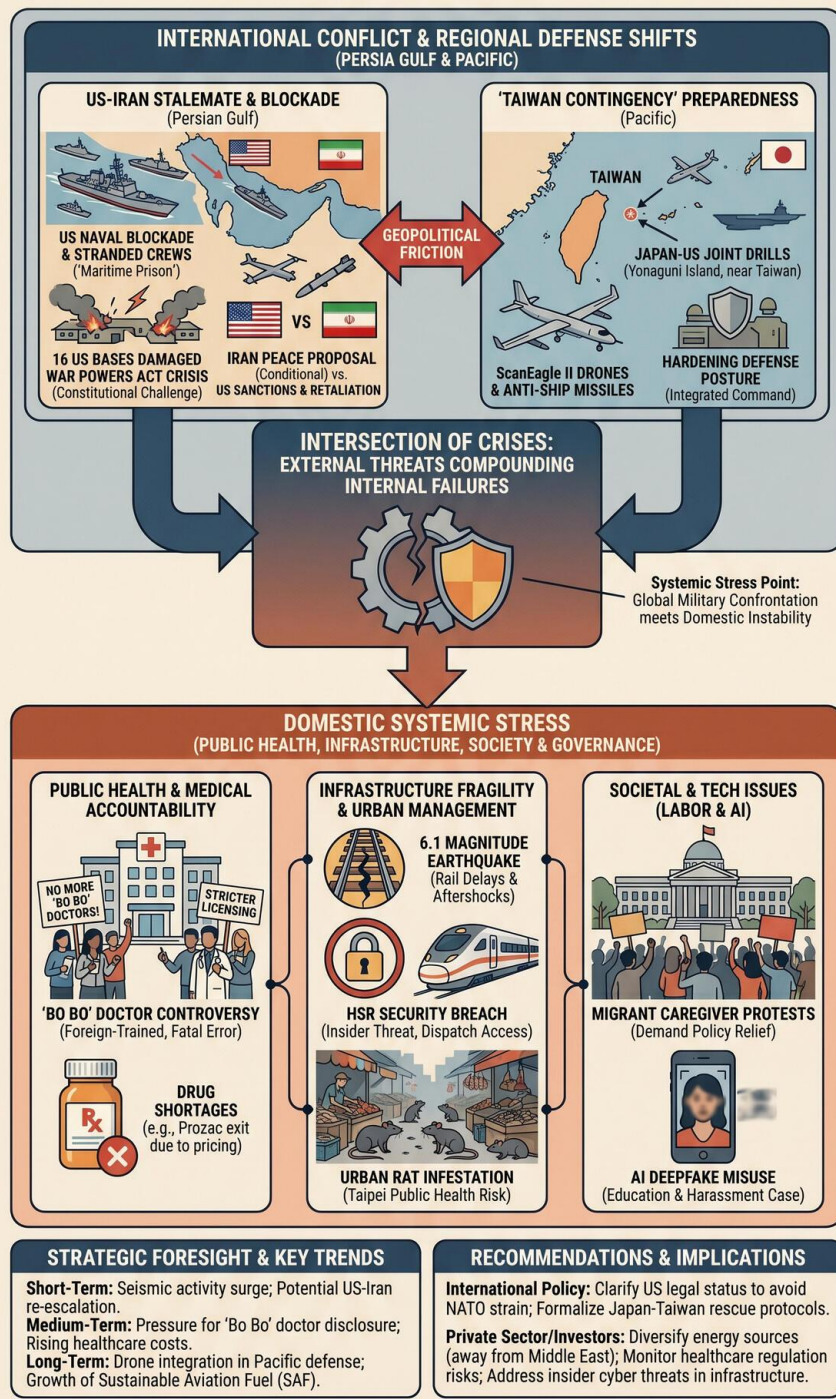
# TODAY'S MEDIA TRENDS

## CTV

MAY 2, 2026

T H E G D E L T P R O J E C T

### GEOPOLITICAL ESCALATION, REGIONAL DEFENSE SHIFTS, & DOMESTIC SYSTEMIC CRISES: A CONVERGENCE OF GLOBAL & INTERNAL PRESSURES (MAY 2026 REPORT SUMMARY)



# TODAY'S MEDIA TRENDS

CTV

MAY 2, 2026

---

GEOPOLITICAL ESCALATION IN THE PERSIAN GULF AND REGIONAL DEFENSE SHIFTS COINCIDE WITH DOMESTIC CRISES IN PUBLIC HEALTH, INFRASTRUCTURE, AND MEDICAL ACCOUNTABILITY

## DAY-AT-A-GLANCE

---

May 2, 2026, was defined by a critical intersection of international military confrontation and domestic instability. Globally, the conflict between the United States and Iran has reached a dangerous stalemate. Despite U.S. claims of a naval blockade successfully turning back 45 vessels, reports emerged of [16 U.S. bases](#) sustaining severe damage in the Middle East. President Trump is currently bypassing the War Powers Act by claiming a de facto ceasefire to avoid Congressional oversight, even as Iran proposes a peace deal contingent on the lifting of sanctions and port unblocking. This geopolitical friction is rippling into the Pacific, where Japan and the U.S. are initiating [joint military exercises](#) near Taiwan, specifically on Yonaguni Island, signaling a hardening of the "Taiwan Contingency" defense posture.

In Taiwan, domestic stability is being tested by a series of high-impact events. A [6.1 magnitude earthquake](#) off the coast of Yilan caused significant rail delays and widespread public alarm, with experts warning of major aftershocks. Simultaneously, the "Bo Bo" doctor controversy—concerning foreign-trained medical professionals—has reignited following a fatal surgical error, leading to demands for stricter licensing. This occurs alongside an [urban rat infestation](#) in Taipei and mass protests by labor groups and employers over migrant caregiver regulations. Collectively, these events suggest a period of high systemic stress, where external security threats are compounded by internal failures in infrastructure, healthcare regulation, and urban management.

## MAJOR DEVELOPMENTS

---

- **US-Iran Military Conflict and Economic Blockade**
  - The U.S. Navy continues to enforce a blockade in the Strait of Hormuz, which has reportedly become a [maritime prison](#) for crews stranded for over 60 days.
  - U.S. intelligence indicates that Iran has targeted advanced [radar and AEW&C systems](#) costing billions, while the U.S. has retaliated with new sanctions against Iranian exchange companies and a Chinese oil terminal.
  - Domestic U.S. opposition to the war has reached 60%, with the [War Powers Act](#) deadline passing, creating a constitutional crisis regarding the President's authority to continue hostilities.

- **Regional Defense and "Taiwan Contingency" Preparedness**

- Japan's Ground Self-Defense Force is conducting drills [near Yonaguni Island](#), just 113km from Taiwan, involving the deployment of ScanEagle II drones.
- U.S. Marines are participating in these exercises, emphasizing [integrated command and control](#) across the Ryukyu Islands chain.

- **Domestic Infrastructure and Disaster Response**

- A significant seismic event caused [32-minute delays](#) on the Taiwan Railways and triggered two national-level emergency alerts.
- A high-speed rail security breach, involving a potential [insider threat](#) providing access codes to the dispatching system, resulted in four trains being halted.

- **Public Health and Medical Licensing Scandals**

- A patient death during a gynecological procedure has sparked a massive outcry against ["Bo Bo" doctors](#)—students who obtained medical degrees in Poland or Eastern Europe to bypass domestic competition.
- The pharmaceutical market is facing a [shortage of original drugs](#), as Prozac (fluoxetine) and other medications exit the Taiwan market due to low National Health Insurance reimbursement prices.

- **Civil Unrest and Labor Rights**

- Hundreds of migrant caregiver employers [protested at Ketagalan Boulevard](#), demanding the removal of "waiting periods" that leave families without care when workers flee or resign.

## **KEY GOVERNANCE TOPICS**

---

### **National Security & Geopolitical Power Dynamics**

The U.S. is facing significant internal and external pressure regarding its Middle East policy. The [withdrawal of 5,000 troops](#) from Germany is interpreted as a punitive measure against allies refusing to support the Iran war, straining the NATO alliance. In the Pacific, the deployment of [anti-ship missile systems](#) on Ishigaki Island by Japan highlights a shift toward a proactive defense posture against Chinese maritime expansion.

### **AI & Technology Policy**

The misuse of AI has emerged as a major social threat. In Taichung, two high school students used deepfake technology to [合成 \(synthesize\) explicit images](#) of 20 female classmates, mirroring the infamous "Xiao Yu" case. Additionally, the [AI restoration of "City of Sadness"](#) has drawn criticism for technical glitches, such as fluctuating finger counts, highlighting the current limitations and ethical concerns of generative AI in cultural preservation.

### **Biosurveillance & Public Health**

Taipei is currently struggling with a [major rat infestation](#) in markets like Double Lien. While the government has increased extermination efforts, scholars attribute the surge to [dense urban renewal](#) projects and rising temperatures, creating a public health risk that now necessitates pet safety warnings regarding rodenticides.

- **Legal Warfare (Lawfare):** The Trump administration's interpretation of ["stopping the clock"](#) on the War Powers Act is being challenged by legal experts who argue it renders the law toothless.

- **Labor & Industry:** Hospital pharmacists are in [severe shortage](#) as practitioners migrate to retail pharmacies where pay is higher and work conditions are less grueling.
- **Economic Security:** International oil prices continue to [fluctuate upward](#), leading to a 5-week freeze on domestic gas price hikes by CPC Corporation to maintain social stability.

## LEGISLATIVE ROUNDUP

---

Legislative activity centered on defense procurement and social welfare adjustments. Debates continue over the "Defense Special Budget" as U.S. officials urge Taiwan to [accelerate arms purchases](#) to prevent a "readiness gap" in 2029. Domestically, proposed amendments to the Artificial Reproduction Act aim to [expand eligibility](#) for reproductive technology, though the bill remains controversial and has been decoupled for separate processing.

### BILLS DISCUSSED/DEBATED:

- **War Powers Resolution (U.S.):** Debate over the 60-day limit for unauthorized military action against Iran; the administration claims a ceasefire to [avoid seeking authorization](#).
- **Artificial Reproduction Act Amendment (Taiwan):** Proposal to allow [surrogacy and expanded access](#) for single individuals and same-sex couples.
- **Labor Pension Act Reform:** Demands from labor unions to [increase the pension multiplier](#) and adjust severance pay caps which have not been changed in 20 years.

## HEARINGS & PRESS EVENTS:

- **Ketagalan Boulevard Protest:** Families of care recipients demanded [policy relief](#) for the costs incurred during caregiver transitions.
- **Ministry of Health and Welfare (MOHW) Briefing:** Addressed the [pharmaceutical exit](#) of original brands, claiming generic alternatives are bioequivalent and more cost-effective.

## DEEP DIVE: TRENDS AND THEMES

---

**The Failure of Global Maritime Norms** The Persian Gulf has transformed from a vital trade artery into a contested military zone. The use of [suicide boat drones](#) by Iran and the U.S. seizure of oil and cargo highlights a regression toward privateering and state-sponsored piracy. The report of deceased crew members whose [bodies are kept in freezers](#) on stranded ships illustrates a humanitarian crisis that is largely ignored by the warring states. This disruption of the "freedom of navigation" principle has direct consequences for energy-dependent economies like Taiwan.

**Professional Integrity vs. Educational Shortcuts** The "Bo Bo" doctor scandal reveals a deep-seated anxiety regarding the [quality of professional services](#) in Taiwan. The perception that wealthy families can "buy" medical degrees abroad and then practice without the rigorous internships required of domestic students has created a class-based resentment. This trend is mirrored in the pharmaceutical sector, where the [reliance on generic drugs](#) is framed by the government as "international standard" but viewed by the public as a cost-cutting measure at the expense of quality.

**The Weaponization of Deepfakes in Education** The Taichung deepfake case indicates that AI-enabled sexual harassment is moving from the dark web into [mainstream school environments](#). The fact that one perpetrator had already been [accepted into a university](#) via a recommendation program has sparked a debate on whether "moral character" should be a more weighted criterion for higher education admissions. This represents a new frontier for school governance and digital ethics.

## **STRATEGIC FORESIGHT**

---

**Short Term (1-4 Weeks):** Expect a surge in seismic activity following the [6.1 magnitude shock](#); aftershocks of 5.0+ are highly probable. In the Middle East, the failure of the Iranian peace proposal will likely lead to a [renewed U.S. bombing campaign](#) as Trump signals a preference for military force over "excessive" diplomatic demands.

**Medium Term (1-6 Months):** Taiwan's MOHW will face intense pressure to [disclose lists](#) of "Bo Bo" doctors in clinical practice. Concurrently, the pharmacist shortage will likely force hospitals to [increase salaries](#) significantly or automate dispensing, leading to higher healthcare operational costs.

**Long Term (1-5 Years):** The US-Japan-Taiwan security architecture will increasingly [integrate drone warfare](#) and surveillance at the edge of the first island chain. Economically, the move toward [Sustainable Aviation Fuel \(SAF\)](#) from waste oils will become a key strategic industry as China looks to reduce its dependence on the unstable Persian Gulf for traditional aviation fuel.

## **RECOMMENDATIONS & IMPLICATIONS**

---

### **For International Policy:**

- The U.S. must clarify the legal status of its Middle East engagements to avoid [NATO fragmentation](#) following troop withdrawals from Germany.
- Taiwan and Japan should formalize a [joint maritime rescue protocol](#) to handle civilian emergencies during military drills near Yonaguni.
- International bodies need to address the "maritime prison" conditions of crews caught in the [Hormuz blockade](#) before a mass casualty event occurs.

### **For Private Sector/Investors:**

- **Energy Sector:** Diversify away from Middle Eastern crude; the blockade is likely to persist, making [SAF technology](#) a high-growth investment area.
- **Healthcare:** Monitor the "Bo Bo" doctor regulatory landscape; clinics employing foreign-trained staff may face [significant reputational and legal risks](#) if new disclosure laws pass.
- **Cybersecurity:** Infrastructure providers should investigate the [insider threat](#) risks highlighted by the high-speed rail security breach, particularly regarding access to emergency signaling systems.

## **ABOUT THIS REPORT**

---

**Today's Media Trends** is a public interest experiment in applying deep thematic trend analysis to television news coverage from around the world to explore how responsibly applied advanced AI can help journalists and scholars better understand the overarching

trends, themes and patterns of our global world.

**No data is used to train or tune any AI model.**

Each morning, in collaboration with the Internet Archive's TV News Archive, we apply Google's Gemini 3 to deeply examine yesterday's coverage from each television news channel to tease out the overarching themes and trends of its news coverage into a richly annotated thematic analysis. Each high-level insight is connected back to the original broadcast, allowing journalists and scholars to understand the dominate themes and trends and instantly click out to the underlying sources for details.

By helping journalists and scholars see the broader trends and patterns of global news

coverage, this analysis helps them identify relevant stories and coverage they might not otherwise have encountered and uncover connections, emphases and narrative shifts that enable more comprehensive reporting and deeper, evidence-based research.

This report is entirely machine generated using Gemini 3 and may include errors and omissions. Please verify all findings. No data is used to train or tune any AI model.

For questions or suggestions, please contact [kalev.leetaru5@gmail.com](mailto:kalev.leetaru5@gmail.com). You can also learn more about the GDEL T Project at <https://blog.gdeltproject.org/> and the Internet Archive's TV News Archive at <https://archive.org/details/tv>.