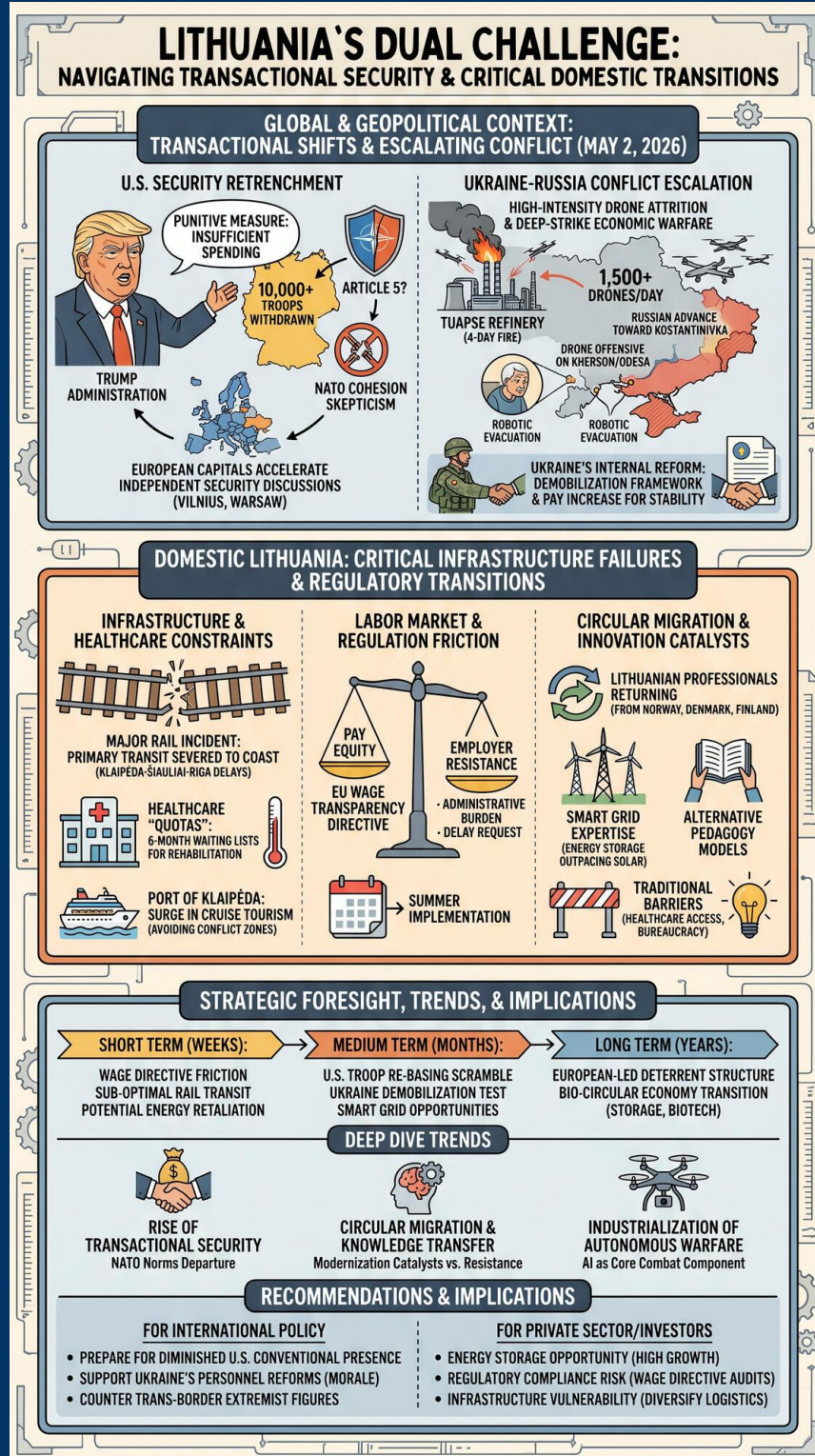


TODAY'S MEDIA TRENDS

LRT

MAY 2, 2026

THE GDELT PROJECT



TODAY'S MEDIA TRENDS

LRT

MAY 2, 2026

LITHUANIA FACES A DUAL CHALLENGE OF NAVIGATING A TRANSACTIONAL TRANSATLANTIC SECURITY SHIFT WHILE MANAGING CRITICAL DOMESTIC INFRASTRUCTURE FAILURES AND LABOR MARKET REGULATORY TRANSITIONS.

DAY-AT-A-GLANCE

The strategic landscape on May 2, 2026, is dominated by a sharp pivot in U.S. foreign policy as the Trump administration executes a withdrawal of over 10,000 troops from Germany, framing the move as a punitive measure for insufficient defense spending. This development, coupled with public skepticism regarding U.S. commitment to NATO's Article 5, is forcing European capitals—including Vilnius and Warsaw—to accelerate discussions on independent security architectures. Simultaneously, the conflict in Ukraine has entered a phase of high-intensity drone attrition and deep-strike economic warfare, evidenced by the four-day fire at Russia's Tuapse refinery and the deployment of over 1,500 drones in a single day. Ukraine is responding to personnel exhaustion with a

significant internal reform, as President Zelensky introduces a demobilization framework and substantial pay increases for front-line infantry to maintain domestic stability.

In Lithuania, governance is focused on mitigating the fallout from a major rail incident that has severed primary transit routes to the coast, highlighting vulnerabilities in critical infrastructure. The domestic agenda is further complicated by the impending implementation of the EU Wage Transparency Directive, which has triggered a defensive response from employer organizations seeking delays despite professional unions' insistence on its necessity for pay equity. This friction occurs against a backdrop of increasing "circular migration," where Lithuanian professionals returning from abroad are attempting to integrate advanced energy storage and alternative pedagogy models into the local economy, though they face traditional barriers in healthcare accessibility and bureaucratic inertia.

MAJOR DEVELOPMENTS

U.S. Security Retrenchment and NATO Cohesion

- President Trump has ordered the withdrawal of more than 10,000 U.S. troops from Germany, citing the country's failure to meet defense spending obligations as a [punishment](#) for previous policy disagreements.
- The Pentagon confirmed that the withdrawal was not pre-coordinated with European allies, heightening fears of a [fragmented Alliance](#) and questioning the reliability of the U.S. nuclear umbrella.

- Controversial Polish MEP Grzegorz Braun arrived in Vilnius, sparking protests due to his [anti-Ukrainian and antisemitic](#) rhetoric, which local analysts view as an attempt to destabilize Polish-Lithuanian relations.

Escalation of the Ukraine-Russia Kinetic and Economic Conflict

- Ukrainian forces are utilizing advanced deep-strike capabilities to systematically dismantle Russian energy infrastructure, with the Tuapse refinery burning for [four consecutive days](#) following repeated strikes.
- Russian forces are incrementally advancing toward the strategic stronghold of Kostantinivka, supported by a massive [drone offensive](#) targeting civilian transit in Kherson and port infrastructure in Odesa.
- The emergence of robotic systems for non-combatant evacuation was highlighted by the [rescue of an elderly woman](#) from a combat zone using a ground-based drone.

Lithuanian Infrastructure and Healthcare Constraints

- A "major incident" on the national rail network has caused significant delays and cancellations on the [Klaipėda-Šiauliai-Riga](#) routes, with recovery efforts requiring manual traffic management.
- Public dissatisfaction is rising over healthcare "quotas" that have created six-month waiting lists for [rehabilitation services](#), despite facilities claiming they have the physical capacity to treat more patients.
- The Port of Klaipėda reports a surge in cruise tourism, with over 100 ships [registered for next year](#), partially driven by travelers avoiding conflict zones in the Middle East.

Technological and Economic Transitions

- Returnee entrepreneurs are reporting a market shift in the green energy sector, where [energy storage systems](#) are now outpacing solar panel installations in demand.
- Thailand is piloting microbial technology to replace traditional [rice field burning](#), aiming to reduce seasonal smog and improve soil health through bio-digestion.
- Lithuanian students achieved a [historic high](#) at the World Individual Debating and Public Speaking Championships in Bristol, reflecting a strengthening of local oratorical education.

KEY GOVERNANCE TOPICS

Energy Security and Smart Infrastructure

Returnee professionals are leveraging "smart grid" expertise gained in the Netherlands and Finland to build decentralized energy systems in Lithuania. Projections indicate that the expansion of [balancing markets](#) and household storage will be the primary drivers of energy independence over the next five years. However, the lack of academic specialization in smart grids within Lithuanian universities remains a [bottleneck for innovation](#).

Labor and Industry Regulation

The Ministry of Social Security and Labor is pushing for the summer implementation of the [Wage Transparency Directive](#). Employers argue that the administrative burden of reporting hourly wages, bonuses, and vacation pay is excessive and have requested a [delay in enforcement](#), citing similar postponements in Denmark and the Netherlands.

National Security and Military Reform

Faced with a decline in volunteers, President Zelensky has pivoted to a "contract-based" reform that promises [clear demobilization timelines](#) for those who have served the longest. This is a critical move to preserve morale and maintain the [social contract](#) between the state and its military personnel during a war of attrition.

Social Stability and Civil Order The visit of Grzegorz Braun to a Polish Diaspora event in Vilnius served as a flashpoint for [local political tensions](#). Freedom Party members and political scientists warned that such figures exploit historic "Kresy" (borderland) sentiments to incite [internal discord](#) within the European Union and Lithuania's minority populations.

LEGISLATIVE ROUNDUP

Regulatory activity today focused heavily on the transposition of European labor mandates and the structural reorganization of military service in wartime conditions. Key discussions centered on balancing the rights of employees with the operational capacities of the private sector and the state's medical insurance fund.

BILLS DISCUSSED/DEBATED:

- **EU Wage Transparency Directive:** A mandate requiring employers to disclose pay averages by gender and job category. Companies with over eight employees must [publicly report](#) pay gaps, with mandatory Labor Inspection intervention if discrepancies exceed 5%.

- **Ukrainian Military Reform Plan:** A legislative framework announced by Zelensky to establish a [system of rotation](#) and demobilization. It includes raising infantry pay to approximately 800 euros per month for [high-risk positions](#).

HEARINGS & PRESS EVENTS:

- **LTG Group Operational Update:** Corporate Affairs Director Aleksandras Zubrekovas addressed the [rail infrastructure failure](#), noting that while one track has been restored, speeds are limited to 20 km/h on damaged sections.
- **State Health Insurance Fund (Ligonių Kasa) Briefing:** Officials defended the [9% increase](#) in rehabilitation funding, while admitting that "rational use" of funds requires strict [quota management](#) that limits patient access.

DEEP DIVE: TRENDS AND THEMES

The Rise of Transactional Security A major theme is the normalization of "transactional diplomacy" within the NATO alliance. The Trump administration's decision to link troop presence directly to [unpaid bills](#) marks a departure from post-WWII security norms. This is driving a secondary trend of "European Strategic Autonomy," as states like Lithuania look toward [building domestic armies](#) or regional coalitions to hedge against U.S. isolationism.

Circular Migration and "Knowledge Transfer" There is a clear trend of Lithuanian nationals returning from high-performance economies (Norway, Denmark, Finland) to implement "Western" models in niche sectors. From [neuroscience and sleep health](#) to [alternative pedagogy](#) and [green hydrogen](#)

[storage](#), these individuals are acting as catalysts for modernization. However, they frequently encounter resistance from [conservative institutional structures](#) that struggle to adapt to decentralized or non-traditional methodologies.

The Industrialization of Autonomous Warfare The war in Ukraine has transitioned into an industrial-scale autonomous conflict. The use of [1,500 drones in 24 hours](#) and the deployment of [robotic systems for civilian rescue](#) indicates that AI and remote-operated platforms are no longer "emerging" technologies but the [core components](#) of modern combat and disaster response.

STRATEGIC FORESIGHT

Short Term (1-4 Weeks)

- Expect increased friction between the Lithuanian government and business lobbies as the [June deadline](#) for the Wage Transparency Directive approaches.
- Rail transit through the damaged central corridor will remain [sub-optimal](#), potentially impacting logistics for the Port of Klaipėda during a peak tourism season.
- The fire at the Tuapse refinery and subsequent fuel shortages in Russia may lead to [retaliatory strikes](#) on Ukrainian energy distribution hubs.

Medium Term (1-6 Months)

- U.S. troop withdrawals from Germany will trigger a [re-basing scramble](#) in Europe, with Poland and the Baltic states likely offering to host displaced units, potentially worsening relations with the Kremlin.

- The implementation of Ukraine's [demobilization system](#) will be a major test of the Zelensky administration's ability to sustain the war effort without triggering social unrest.
- Lithuania's "Smart Grid" startups may find [new market opportunities](#) in Ukraine as that country seeks decentralized energy solutions to withstand constant grid attacks.

Long Term (1-5 Years)

- Structural changes in the Baltic Sea security architecture will likely move toward a [European-led deterrent](#) if U.S. reliability continues to oscillate based on domestic political cycles.
- Energy storage and [biotech transitions](#) (like the Thai rice-digestion model) will fundamentally reshape agricultural and industrial sectors, moving from fossil-fuel dependence to [bio-circular economies](#).

RECOMMENDATIONS & IMPLICATIONS

For International Policy:

- Allies should prepare for a [contingency plan](#) for NATO that assumes a diminished U.S. conventional presence in Western Europe.
- Support for Ukraine should shift toward [funding the pay raises](#) and personnel reforms necessary to prevent a collapse of morale in the Ukrainian Armed Forces.
- Diplomatic efforts are needed to counter [trans-border extremist figures](#) who seek to exploit minority issues for geopolitical gain.

For Private Sector/Investors:

- **Energy Storage Opportunity:** High growth is projected for [household and industrial battery storage](#) as consumers move beyond simple solar generation toward grid-balancing.
- **Regulatory Compliance Risk:** Large firms must prepare [audit-ready payroll data](#) to meet the 5% discrepancy threshold of the Wage Transparency Directive by early summer.
- **Infrastructure Vulnerability:** The [LTG rail incident](#) serves as a reminder to diversify logistics chains; investors should account for "single-point-of-failure" risks in Baltic transit corridors.

ABOUT THIS REPORT

Today's Media Trends is a public interest experiment in applying deep thematic trend analysis to television news coverage from around the world to explore how responsibly applied advanced AI can help journalists and scholars better understand the overarching trends, themes and patterns of our global world.

No data is used to train or tune any AI model.

Each morning, in collaboration with the Internet Archive's TV News Archive, we apply Google's Gemini 3 to deeply examine yesterday's coverage from each television news channel to tease out the overarching themes and trends of its news coverage into a richly annotated thematic analysis. Each high-level insight is connected back to the original broadcast, allowing journalists and scholars to understand the dominate themes and trends and instantly click out to the underlying sources for details.

By helping journalists and scholars see the broader trends and patterns of global news coverage, this analysis helps them identify relevant stories and coverage they might not otherwise have encountered and uncover connections, emphases and narrative shifts that enable more comprehensive reporting and deeper, evidence-based research.

This report is entirely machine generated using Gemini 3 and may include errors and omissions. Please verify all findings. No data is used to train or tune any AI model.

For questions or suggestions, please contact kalev.leetaru5@gmail.com. You can also learn more about the GDELT Project at <https://blog.gdeltproject.org/> and the Internet Archive's TV News Archive at <https://archive.org/details/tv>.