

# TODAY'S MEDIA TRENDS

## TELEARUBA

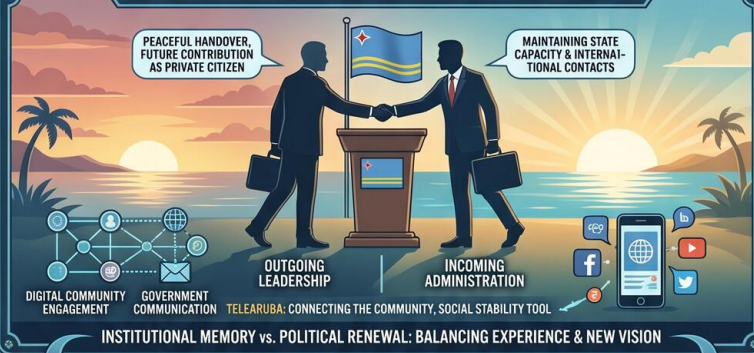
MAY 2, 2026

THE GDELT PROJECT

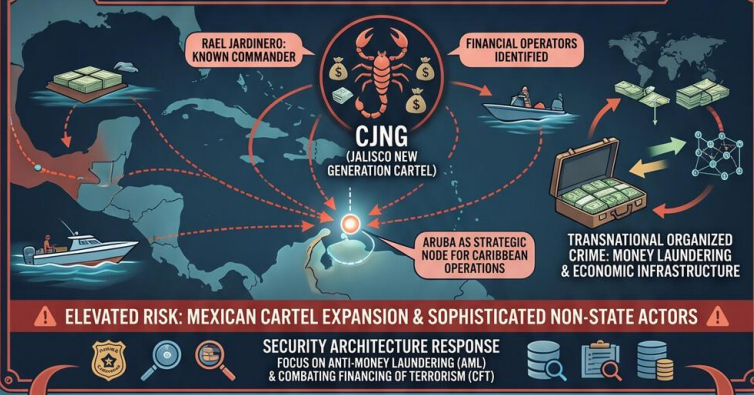
### ARUBA: STRATEGIC INTERSECTION & RESILIENCE – 2026 REPORT

NAVIGATING POLITICAL SUCCESSION, REGIONAL SECURITY THREATS, AND SOCIO-CULTURAL EVOLUTION

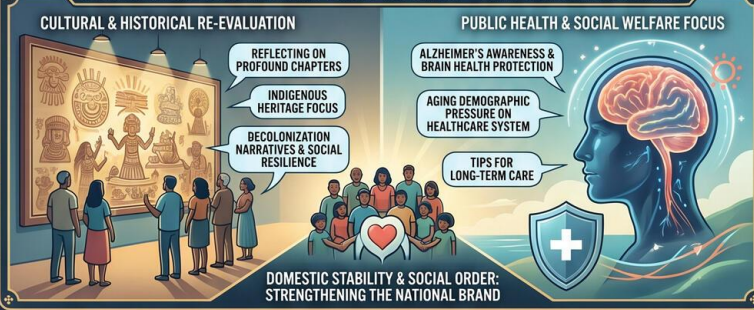
#### SECTION 1: POLITICAL SUCCESSION & INSTITUTIONAL TRANSITION



#### SECTION 2: REGIONAL SECURITY ESCALATION – THE CARTEL SHADOW



#### SECTION 3: CULTURAL IDENTITY & PUBLIC HEALTH – STATE-DRIVEN RESILIENCE



#### STRATEGIC FORESIGHT & RECOMMENDATIONS: SHORT TO LONG TERM



# TODAY'S MEDIA TRENDS

## TELEARUBA

MAY 2, 2026

---

ARUBA CONFRONTS A STRATEGIC INTERSECTION OF HIGH-LEVEL POLITICAL SUCCESSION, REGIONAL SECURITY THREATS FROM MEXICAN CARTEL EXPANSION, AND A STATE-LED EMPHASIS ON CULTURAL IDENTITY AND PUBLIC HEALTH.

### DAY-AT-A-GLANCE

---

The reporting on May 2, 2026, reveals a period of significant institutional transition in Aruba, marked by a formal [handover of authority](#) to a new administration. This transition occurs against a backdrop of increasing regional volatility, specifically regarding the documented presence of high-ranking operatives from the Jalisco New Generation Cartel (CJNG). The mention of "Rael Jardinero," a known [commander within the CJNG](#), alongside his financial operators, signals an elevated risk of transnational organized crime infiltrating the Caribbean financial and logistical corridors. This development suggests that despite political shifts, the underlying security architecture is being tested by sophisticated non-state actors.

Simultaneously, the state is actively engaged in "soft power" and social resilience initiatives. This is evidenced by a dual focus on public health awareness, particularly [addressing Alzheimer's disease](#) and brain health, and a push for cultural introspection through [artistic experiences](#) that explore indigenous heritage and historical chapters. This convergence suggests a government strategy aimed at strengthening domestic social cohesion and "digital community" engagement while navigating the treacherous waters of international drug trafficking and a leadership vacuum inherent in any succession process.

### MAJOR DEVELOPMENTS

---

#### Regional Security Escalation and Transnational Crime

- Reports identify the presence or influence of [Rael Jardinero](#), a senior commander of the Jalisco New Generation Cartel (CJNG), in regional discourse.
- The inclusion of his [financial operator](#) in intelligence or news briefs indicates a focus on the cartel's money laundering and economic infrastructure rather than just kinetic violence.
- The visibility of such high-level cartel figures suggests that Aruba or its immediate neighbors are being utilized as strategic nodes for CJNG's Caribbean operations.

#### Political Succession and Institutional Stability

- A senior official has formally expressed the [intent to step down](#), entrusting the future of the administration to an unnamed successor.

- The official's emphasis on returning as a [private citizen](#) to observe progress suggests a commitment to a peaceful and democratic transfer of power, aiming to reassure markets and the public.
- This transition phase is critical for maintaining state capacity in the face of the aforementioned security threats.

### State-Driven Cultural and Historical Re-evaluation

- The promotion of an [artistic experience](#) designed to invite the public to reflect on "profound chapters" of history indicates a state-sponsored effort to define national identity.
- There is a specific focus on [indigenous heritage](#), suggesting a pivot toward decolonization narratives or the strengthening of local roots to foster social resilience.

### Public Health and Social Welfare Focus

- National media is prioritizing [Alzheimer's awareness](#), providing the public with tips to protect brain health for the future.
- This focus highlights an aging demographic profile in Aruba and the resulting pressure on the healthcare system and state capacity to manage long-term care.

## KEY GOVERNANCE TOPICS

---

### Succession & Stability

- The transition from a current leader to a [successor](#) is being framed as an orderly process to ensure continuity of the many "contacts" and international relations established by the outgoing administration.

### Regional Influence & Power Projection

- The mention of CJNG operatives like [Rael Jardinero](#) reflects the shadow power of Mexican cartels projecting influence into the Dutch Caribbean, challenging the sovereign security architecture of the region.

### Domestic Stability & Social Order

- Telearuba is positioning itself as a [part of the community](#), utilizing social media to maintain a "conversation" with the public, which serves as a tool for government communication and social stability.

### Security Architecture

- The focus on [financial operators](#) within criminal cartels suggests an evolution in local security priorities toward anti-money laundering (AML) and combating the financing of terrorism (CFT).

## LEGISLATIVE ROUNDUP

---

Legislative and policy discussions remain focused on institutional continuity and public health mandates. While no specific bill numbers were cited, the discourse indicates a policy environment centered on managing the transition of executive power and enhancing health surveillance protocols.

### BILLS DISCUSSED/DEBATED:

- **Executive Transition Protocol:** transfer of responsibilities to a successor and the role of outgoing officials.
- **Public Health Brain Safety Initiative:** Alzheimer's prevention and cognitive health education.

## HEARINGS & PRESS EVENTS:

- **Leadership Handover Address:**future contributions as a private citizen.
- **Cultural Heritage Exhibition Launch:**artistic project focused on indigenous history and collective imagination.
- **Community Media Briefing:**connecting the community via social platforms.

## DEEP DIVE: TRENDS AND THEMES

---

### The Mexican Cartel "Shadow" over the Caribbean

The identification of [Rael Jardinero \(CJNG\)](#) is a significant indicator of the "Mexicanization" of Caribbean drug routes. CJNG is known for its aggressive expansion and sophisticated financial networks. Their mention in a local Aruban context implies that the island's status as a financial hub and its proximity to South American transit points have made it a target for high-level cartel "financial operators." This trend suggests that security risks are no longer just about petty crime or local gangs, but involve Tier-1 transnational threats that require international intelligence cooperation.

### Institutional Memory vs. Political Renewal

The outgoing official's statement about [leaving the future](#) to a successor while remaining available to "contribute" highlights a tension between the need for new leadership and the desire to retain institutional memory. This is particularly relevant in a small-island state where personal "contacts" often drive diplomatic and economic success. The success of the next administration will depend on whether it can

step out of the predecessor's shadow while maintaining the "many contacts" mentioned as vital for the future.

### Reclamation of Indigenous and Historical Narrative

The focus on [indigenous heritage](#) and "profound chapters" of history suggests a broader Caribbean trend of moving away from colonial-centric narratives. By fostering an [identity and imagination](#) rooted in pre-colonial history, the state may be attempting to create a more resilient national "brand" that can withstand the homogenizing forces of globalism and provide a sense of belonging in a time of political change.

## STRATEGIC FORESIGHT

---

### Short Term (1-4 Weeks)

- Expect increased security presence or financial audits following the public naming of [CJNG operatives](#).
- Initial friction or "settling in" periods for the [successor](#) as they take over the official portfolio.

### Medium Term (1-6 Months)

- Potential for retaliatory criminal activity or shifts in smuggling routes as the cartel leadership reacts to being [publicly identified](#).
- Implementation of new public health programs centered on [brain health](#) to address the needs of an aging electorate.

## Long Term (1-5 Years)

- A potential shift in Aruba's international standing based on how the [new leadership](#) manages the balance between traditional Dutch ties and regional Caribbean/Latin American realities.
- Deepening of the "digital community" initiative, potentially leading to [increased state surveillance](#) under the guise of community engagement and connectivity.

## RECOMMENDATIONS & IMPLICATIONS

---

### For International Policy:

- Enhance regional intelligence sharing to track the movement of [CJNG financial operators](#) across the Caribbean basin.
- Monitor the political transition in Aruba to ensure that [diplomatic contacts](#) and treaty obligations remain stable during the handover.
- Support regional health initiatives that address [Alzheimer's](#), as this is becoming a shared demographic challenge across the Dutch Caribbean.

### For Private Sector/Investors:

- **Risk Management:** cartel-linked operators now active in the region.
- **Investment Opportunity:** brain health and an aging population indicates a growing market for specialized healthcare services and geriatric technology.
- **Regulatory Compliance:** Anti-Money Laundering (AML) regulations as the government moves to purge cartel financial influence.

## ABOUT THIS REPORT

---

**Today's Media Trends** is a public interest experiment in applying deep thematic trend analysis to television news coverage from around the world to explore how responsibly applied advanced AI can help journalists and scholars better understand the overarching trends, themes and patterns of our global world.

**No data is used to train or tune any AI model.**

Each morning, in collaboration with the Internet Archive's TV News Archive, we apply Google's Gemini 3 to deeply examine yesterday's coverage from each television news channel to tease out the overarching themes and trends of its news coverage into a richly annotated thematic analysis. Each high-level insight is connected back to the original broadcast, allowing journalists and scholars to understand the dominate themes and trends and instantly click out to the underlying sources for details.

By helping journalists and scholars see the broader trends and patterns of global news coverage, this analysis helps them identify relevant stories and coverage they might not otherwise have encountered and uncover connections, emphases and narrative shifts that enable more comprehensive reporting and deeper, evidence-based research.

This report is entirely machine generated using Gemini 3 and may include errors and omissions. Please verify all findings. No data is used to train or tune any AI model.

For questions or suggestions, please contact [kalev.leetaru5@gmail.com](mailto:kalev.leetaru5@gmail.com). You can also learn more about the GDELT Project at <https://blog.gdeltproject.org/> and the Internet

Archive's TV News Archive at <https://archive.org/details/tv>.