

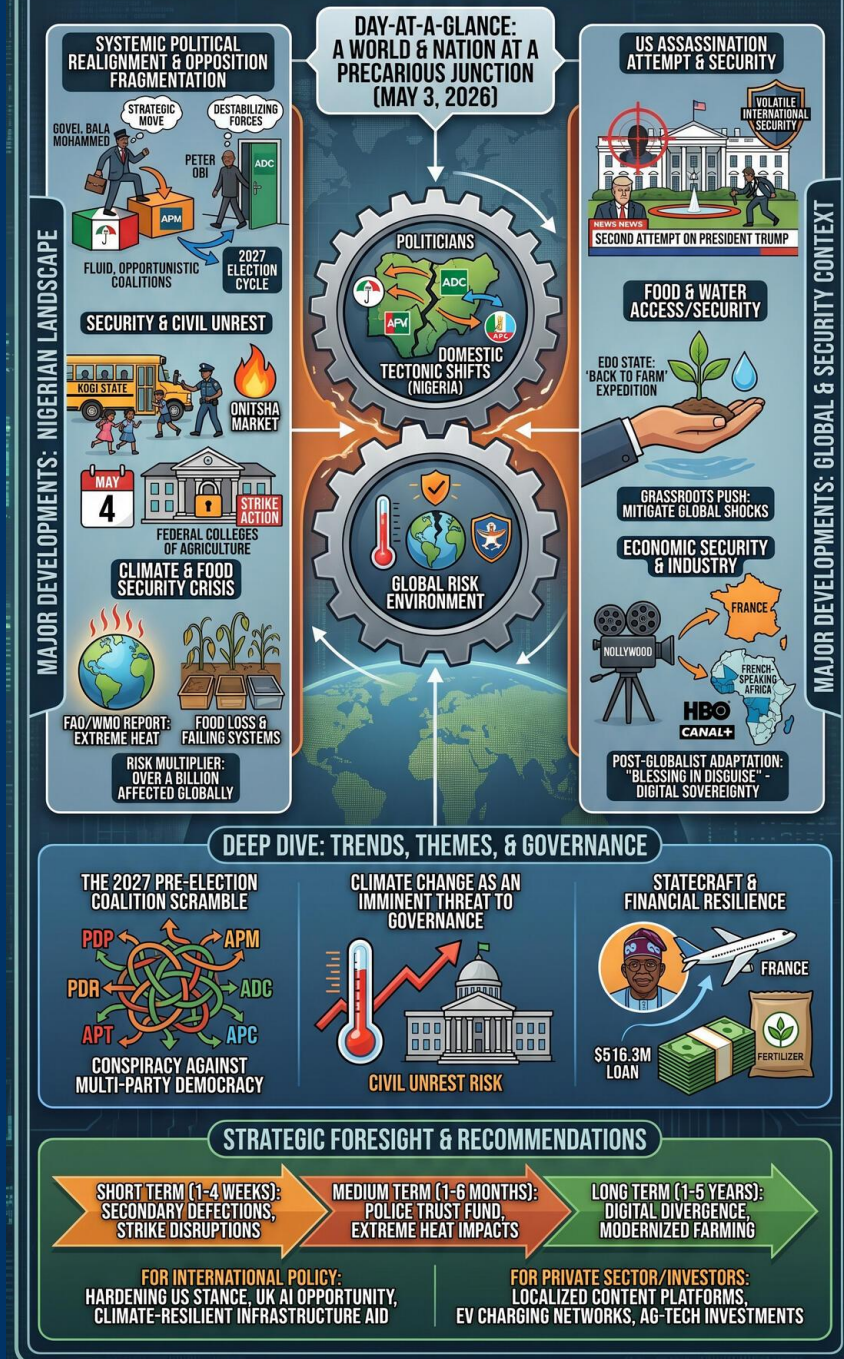
TODAY'S MEDIA TRENDS

CHANNELSTV

MAY 3, 2026

THE GDELT PROJECT

REPORT: POLITICAL REALIGNMENT IN NIGERIA INTENSIFIES AMID GLOBAL CLIMATE THREATS & TARGETED ASSASSINATION ATTEMPT ON US PRESIDENT



TODAY'S MEDIA TRENDS

CHANNELSTV

MAY 3, 2026

POLITICAL REALIGNMENT IN
NIGERIA INTENSIFIES AMID
GLOBAL CLIMATE THREATS AND
TARGETED ASSASSINATION
ATTEMPT ON US PRESIDENT

DAY-AT-A-GLANCE

The reporting on May 3, 2026, depicts a world and a nation at a precarious junction, where localized political maneuvering in Nigeria converges with a heightened global risk environment. Domestically, the Nigerian political landscape is undergoing a significant tectonic shift as Bauchi State Governor Bala Mohammed formally [defected from the People's Democratic Party](#) (PDP) to the Allied People's Movement (APM). This move, occurring alongside the exit of high-profile figures like Peter Obi from the African Democratic Congress (ADC), suggests a total collapse of traditional opposition structures in favor of fluid, opportunistic coalitions ahead of the 2027 general elections. The rhetoric from major parties is increasingly hostile, with the ruling APC characterizing these shifts as "political opportunism" while internal divisions within the PDP and ADC point toward a vacuum in opposition leadership.

Simultaneously, the global community is reacting to a [second attempted assassination](#) of US President Donald Trump during the White House Correspondents' Dinner. The incident, involving a 31-year-old suspect and an exchange of gunfire that wounded a Secret Service officer, underscores a volatile international security environment that mirrors domestic instability. This event coincides with the release of a dire FAO/WMO report warning that [extreme heat is pushing](#) global agri-food systems to the brink of collapse. For Nigeria, this is compounded by imminent industrial action in federal colleges of agriculture and ongoing security crises, including the kidnapping of school children in Kogi State, highlighting a pervasive state of vulnerability across food, security, and political systems.

MAJOR DEVELOPMENTS

Systemic Political Realignment and Opposition Fragmentation

- Governor Bala Mohammed of Bauchi State officially defected to the Allied People's Movement (APM) after [extensive consultations and failed negotiations](#) with the APC and ADC.
- Internal crises within the ADC have intensified, leading to the departure of former Anambra Governor Peter Obi, who cited [infiltration of destabilizing forces](#) and legal disputes as primary reasons for his exit.
- The APC leadership has dismissed these movements as the actions of "political rolling stones," signaling a [sharpening of rhetoric](#) as the 2027 election cycle begins to dictate statecraft.

Security and Civil Unrest

- Kogi State police confirmed the rescue of 17 pupils from an Islamic school and orphanage, though [nine victims remain missing](#), highlighting the persistent threat to vulnerable institutions.
- Academic activities in all federal colleges of agriculture are [set for disruption](#) starting May 4, 2026, as the Academic Staff Union begins strike action over unresolved grievances with the federal government.
- A major fire incident at the Headbridge Building Materials Market in Onitsha has prompted a [Senate-mandated assessment](#) by NEMA to evaluate the scale of displacement and economic loss.

Climate and Food Security Crisis

- A 108-page joint report by the FAO and WMO identifies extreme heat as a "major risk multiplier," noting that [surging temperatures](#) have affected over a billion people and are compromising agricultural productivity globally.
- Regional reports from Zambia and Uganda indicate that [1.3 billion tons of food](#) are lost annually due to failing storage and transport systems, exacerbated by rising temperatures.

KEY GOVERNANCE TOPICS

Elite Politics & Leadership Dynamics The defection of Governor Bala Mohammed is a significant blow to the PDP's cohesion, as he was one of the party's remaining influential governors. This shift to the APM, a relatively minor party, indicates a [strategic move to build](#) a new political platform outside the two-party hegemony. Meanwhile, Governor Peter Mbah of Enugu State has openly endorsed

[President Tinubu's second term bid](#), demonstrating a fragmentation of regional loyalty that traditionally countered the ruling party.

Economic Security & Industry The Nollywood industry is reporting a "blessing in disguise" following the [exit of global streaming giants](#) like Netflix and Prime Video in 2025. Local creators are now pivoting toward aggressive expansion in non-traditional markets like France and French-speaking Africa, utilizing independent distribution models to [bypass previous gatekeepers](#) and secure content deals with platforms like HBO and Canal+.

National Security & Security Architecture

The Senate is moving to repeal the 2019 Nigerian Police Trust Fund Act to establish a [diversified funding model](#) based on 1% of total federation revenue. This legislative shift aims to provide predictable funding for technological capabilities and personnel welfare, addressing the systemic operational failures that have allowed incidents like the Kogi kidnappings to persist.

Food & Water Access/Security The Edo State Ministry of Agriculture has completed a "back to farm" expedition, emphasizing that [proper farmer registration](#) is essential for accessing government support. This grassroots push is a direct response to the broader food security warnings issued by international bodies, focusing on strengthening local production to mitigate the impact of global price shocks and extreme weather.

Statecraft & Financial Resilience President Bola Tinubu has departed for France as part of a three-nation tour, emphasizing [diplomatic engagement](#) and the pursuit of foreign investment. Simultaneously, the Senate is

considering a [\\$516.3 million loan](#) to support fertilizer distribution and fish farming, indicating a heavy reliance on external debt to fund critical agricultural interventions.

LEGISLATIVE ROUNDUP

Legislative activity on May 3 focused heavily on institutional reform and financial restructuring to address security and agricultural needs. The Senate is prioritizing a more transparent funding mechanism for the police while simultaneously managing a large-scale international loan meant to stabilize the domestic food supply.

BILLS DISCUSSED/DEBATED:

- **Nigerian Police Trust Fund (Repeal and Re-enactment) Bill:** Seeks to establish a [sustainable funding model](#) by anchoring it on 1% of the federation's total revenue to enhance operational capacity.
- **Special Seats Bill for Women:** A proposal gaining traction that seeks to reserve [specific legislative seats](#) for women across the federation to address gender parity in governance.

HEARINGS & PRESS EVENTS:

- **Senate Committee on Local and Foreign Debt:** Presented a report on a [\\$516.3 million loan](#) intended for agricultural inputs and aquaculture support.
- **White House Press Conference (Post-Assassination Attempt):** President Trump detailed the [violence of the attack](#) at the Hilton Hotel and praised the immediate reaction of the Secret Service.

- **Edo State Stakeholders Meeting:** Agriculture Commissioner Jerry Wagwe announced the conclusion of the [back to farm expedition](#) to boost grassroots farming.

DEEP DIVE: TRENDS AND THEMES

The 2027 Pre-Election Coalition Scramble

The defection of Governor Bala Mohammed and the exit of Peter Obi from the ADC are not isolated incidents but part of a broader trend of [conspiracy against multi-party democracy](#), as some analysts describe it. The traditional party structures (PDP, LP, ADC) are being cannibalized by their own leaders, who are seeking to form a "Third Way" or align with the ruling APC. This volatility suggests that the 2027 election will not be a battle of ideologies but a [realignment of power brokers](#) seeking survival amidst internal party hostility and legal warfare.

Post-Globalist Economic Adaptation The Nollywood narrative—of thriving after the exit of Netflix and Prime—indicates a significant trend in "digital sovereignty." Having been [dealt a blow](#) in 2025, the industry is proving that local ecosystems can adapt by seeking diversified global markets (e.g., French-speaking regions) rather than relying on US-based titans. This "blessing in disguise" may serve as a template for other African sectors facing the withdrawal of international capital, emphasizing [independent distribution](#) and regional specialization.

Climate Change as an Imminent Threat to Governance The FAO/WMO findings on extreme heat are shifting from environmental warnings to [physiological and systemic risks](#) to national stability. In Nigeria, where food costs are already a primary driver of voter

sentiment, the "risk multiplier" effect of heat is likely to exacerbate civil unrest. The looming strike by agricultural academics [further cripples](#) the state's capacity to innovate its way out of this crisis, creating a dangerous gap between scientific warning and government action.

STRATEGIC FORESIGHT

Short Term (1-4 Weeks): The defection of Governor Bala Mohammed will likely trigger a wave of [secondary defections](#) by loyalists in Bauchi and neighboring states. Simultaneously, the strike by the Academic Staff Union of Federal Colleges of Agriculture will disrupt the planting season's technical support, potentially leading to [reduced crop yields](#) later in the year. Expect heightened security protocols at high-profile diplomatic events following the US assassination attempt.

Medium Term (1-6 Months): The Senate's passage of the new Police Trust Fund model will be critical for [stabilizing internal security](#) before the end of the fiscal year. Political parties will consolidate into two or three major blocs as "rolling stone" politicians find temporary homes. The extreme heat mentioned in reports will likely manifest in [increased electricity demand](#) and higher food prices, testing the government's "Renewed Hope" economic agenda.

Long Term (1-5 Years): Nigeria's digital economy will likely diverge into a bifurcated system where successful startups and tech-integrated transit [flourish in urban hubs](#), while small businesses continue to struggle with the costs of digitalization. The structural changes in the global agri-food system will force Nigeria to either [completely modernize farming](#) (heat-resistant crops, indoor farming)

or face permanent food insecurity and periodic famine risks.

RECOMMENDATIONS & IMPLICATIONS

For International Policy:

- The US assassination attempt and subsequent security rhetoric suggest a hardening of US domestic policy, which may [divert diplomatic attention](#) from African security partnerships in the short term.
- The UK's focus on [AI guardrails](#) and tech investment, as discussed by King Charles III, presents an opportunity for Nigeria to align its digital economy regulations with British standards to attract investment.
- International aid should pivot from direct food aid to [climate-resilient agricultural infrastructure](#), focusing on the heat-stress mitigations highlighted by the FAO.

For Private Sector/Investors:

- Nollywood's shift toward [independent distribution](#) and non-US markets indicates a high-growth opportunity for investors in localized content platforms and regional streaming services.
- The move toward private-sector-led [EV charging networks](#) in Nigeria suggests a first-mover advantage for companies investing in green transit infrastructure and mobile integrated solutions.
- The ongoing agricultural strikes and climate warnings represent a [high risk for traditional agribusiness](#) investments, suggesting a need to pivot toward ag-tech and controlled-environment agriculture.

ABOUT THIS REPORT

Today's Media Trends is a public interest experiment in applying deep thematic trend analysis to television news coverage from around the world to explore how responsibly applied advanced AI can help journalists and scholars better understand the overarching trends, themes and patterns of our global world.

No data is used to train or tune any AI model.

Each morning, in collaboration with the Internet Archive's TV News Archive, we apply Google's Gemini 3 to deeply examine yesterday's coverage from each television news channel to tease out the overarching themes and trends of its news coverage into a richly annotated thematic analysis. Each high-level insight is connected back to the original broadcast, allowing journalists and scholars to understand the dominate themes and trends

and instantly click out to the underlying sources for details.

By helping journalists and scholars see the broader trends and patterns of global news coverage, this analysis helps them identify relevant stories and coverage they might not otherwise have encountered and uncover connections, emphases and narrative shifts that enable more comprehensive reporting and deeper, evidence-based research.

This report is entirely machine generated using Gemini 3 and may include errors and omissions. Please verify all findings. No data is used to train or tune any AI model.

For questions or suggestions, please contact kalev.leetaru5@gmail.com. You can also learn more about the GDELT Project at <https://blog.gdeltproject.org/> and the Internet Archive's TV News Archive at <https://archive.org/details/tv>.