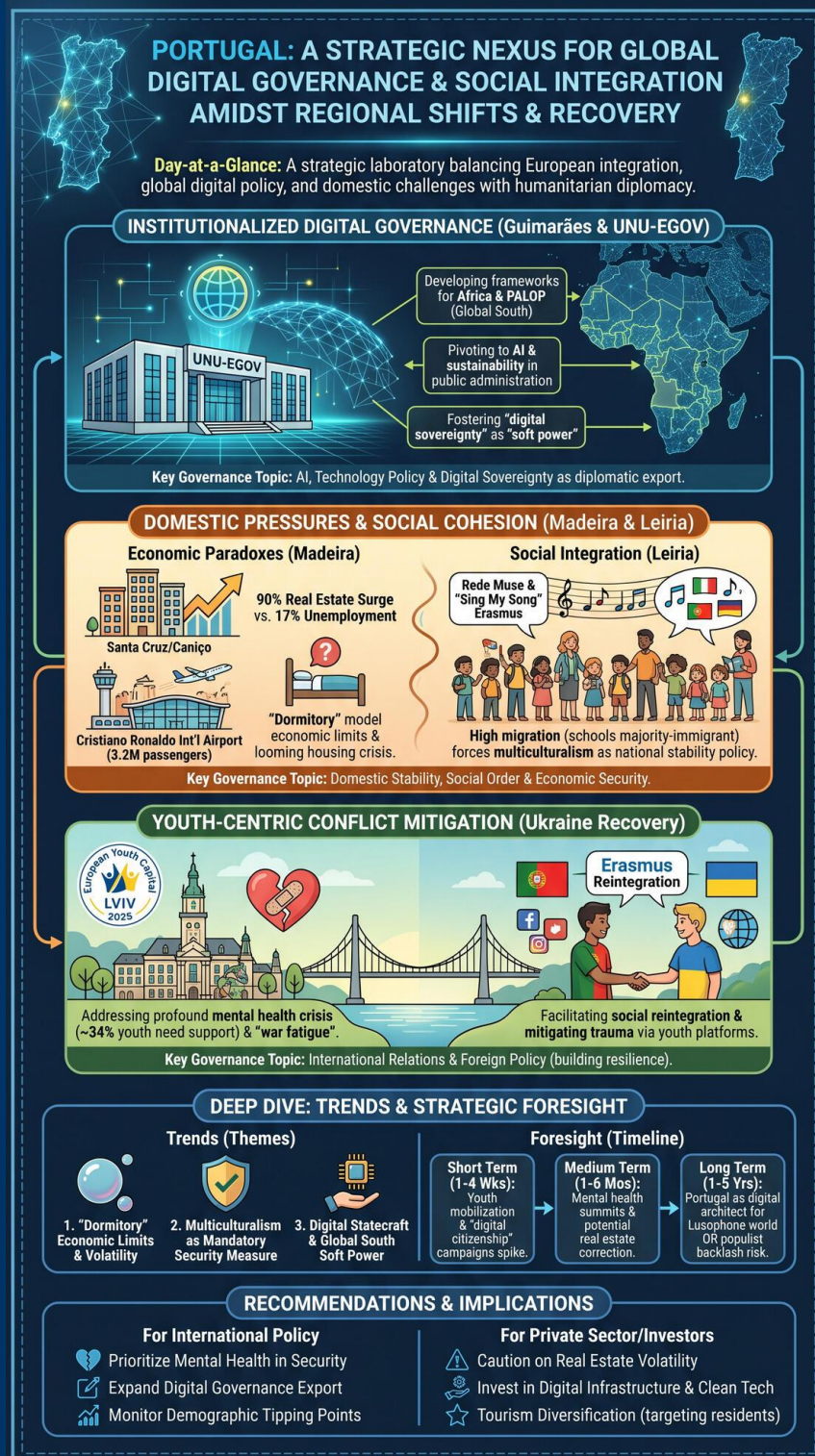


TODAY'S MEDIA TRENDS

RTPI

MAY 3, 2026

T H E G D E L T P R O J E C T



TODAY'S MEDIA TRENDS

RTPI

MAY 3, 2026

PORTUGAL LEVERAGES ITS ROLE AS A NEXUS FOR INTERNATIONAL DIGITAL GOVERNANCE AND SOCIAL INTEGRATION PROGRAMS AMIDST REGIONAL ECONOMIC SHIFTS AND EUROPEAN CONFLICT RECOVERY EFFORTS.

DAY-AT-A-GLANCE

The diplomatic and social landscape on May 3, 2026, reflects a Portugal increasingly positioned as a strategic laboratory for European integration and global digital policy. While the United Nations University (UNU) in Guimarães expands its reach into digital governance for the Global South, domestic regions like Madeira and Leiria are managing the complexities of rapid demographic shifts and real estate inflation. These internal dynamics are being met with educational initiatives aimed at long-term social cohesion, particularly through the Erasmus "Sing My Song" program, which addresses the challenges of a student population where [immigrants often represent the majority](#) of the classroom.

Simultaneously, Portugal's foreign policy and youth engagement platforms are deeply

entwined with the ongoing recovery in Ukraine. With Lviv designated as the European Youth Capital for 2025, Portuguese organizations are playing a critical role in addressing the [profound mental health crisis](#) affecting Ukrainian youth. This convergence of digital statecraft, demographic management, and humanitarian diplomacy suggests a Portuguese strategy focused on building "soft power" resilience through institutional leadership in both the digital and social spheres.

MAJOR DEVELOPMENTS

Institutionalization of Digital Governance in Guimarães The United Nations University (UNU-EGOV) has solidified its role as an international territory within Portugal, focusing on digital transformation for global stability.

- The Guimarães-based unit is actively developing [digital governance frameworks](#) tailored for Africa and the PALOP (Portuguese-speaking) nations.
- Current research initiatives are pivoting toward the impact of [artificial intelligence and sustainability](#) in public administration.
- The facility operates under an international agreement with the Portuguese state, granting it a status similar to a diplomatic mission to foster "digital sovereignty" in the Global South.

Socio-Economic Pressures in the Madeira Archipelago The Santa Cruz municipality is experiencing a period of intense growth and economic paradoxes.

- Real estate prices in the Caniço region have surged by [nearly 90 percent](#) since 2021, driven by its status as a residential hub for the capital, Funchal.

- Despite robust population growth and high multiband transaction volumes, the area maintains a [disproportionately high unemployment rate](#), accounting for 17% of the regional total.
- The Cristiano Ronaldo International Airport remains the primary economic engine, moving [3.2 million passengers](#) in the first seven months of 2025 alone.

Youth-Centric Conflict Mitigation in Ukraine European social programs are being reoriented to address the "war fatigue" and trauma of the Ukrainian youth population.

- Approximately [34 percent of Ukrainian youth](#) admit to needing psychological support due to the isolation and impact of the ongoing conflict.
- The Erasmus program is being utilized as a vehicle for social reintegration, facilitating exchanges between Ukrainian and Portuguese students to mitigate the [effects of online education](#) and social withdrawal during the war.

KEY GOVERNANCE TOPICS

AI, Technology Policy & Digital Sovereignty The UNIGov unit in Guimarães is emerging as a critical node for [shaping digital governance](#) globally. Their work focuses on how digital technologies can transform the relationship between governments and citizens, particularly in regions with developing infrastructure. This reflects a broader move toward establishing "best practices" in digital administration as a form of diplomatic export.

Domestic Stability & Social Order High migration levels in districts like Leiria are testing the capacity of the state's educational and social systems. With schools reporting

that [only 54 percent](#) of their students are Portuguese, the government is relying on non-formal education and "Rede Muse" programs to ensure social order. This shift indicates that demographic integration has become a primary pillar of national stability policy.

Economic Security & Investment Climate

The hyper-inflation of the real estate market in Madeira, specifically the [€2,787 per square meter](#) median price in Caniço, suggests a looming housing affordability crisis. While tourism remains lucrative, the lack of "habitational dynamics" in new construction despite population growth represents a significant risk to local economic resilience.

International Relations & Foreign Policy

Portugal is leveraging its "Lusophone" links through digital governance research at the UN. By focusing on [needs in Africa](#), Portugal is using Guimarães as a platform to project influence across the "Global South," positioning itself as the bridge between European digital standards and African implementation.

LEGISLATIVE ROUNDUP

Policy developments highlighted today center on international agreements and the deployment of EU-funded social inclusion frameworks. Governance is characterized more by the implementation of existing international accords than new domestic legislation.

BILLS DISCUSSED/DEBATED:

- **UNIGov International Status Agreement:** A standing agreement between the Portuguese state and the United Nations that recognizes the UNU-EGOV facility in Guimarães as [international territory](#), facilitating independent global research.
- **Erasmus+ Funding Framework (2021-2027):** Continued implementation of the "Sing My Song" and "Awesome People" mobility projects, focusing on [social inclusion and youth empowerment](#) across Portugal, Spain, Belgium, and Sweden.

HEARINGS & PRESS EVENTS:

- **European Youth Capital 2025 Briefing:** Officials in Lviv, Ukraine, detailed the [strategic goals for 2025](#), emphasizing support for scientists and defenders alongside youth social programs.
- **Madeira Regional Election Retrospective:** Analysis of the 2021 results in Santa Cruz, where the [JPP party maintained dominance](#) with over 54% of the vote, setting the stage for upcoming local governance challenges.

DEEP DIVE: TRENDS AND THEMES

The "Dormitory" Economic Model and Its Limits The transformation of secondary cities like Caniço into "dormitories" for regional capitals (Funchal) is creating an unsustainable economic profile. The data shows a [90% increase in housing costs](#) over three years, which, when coupled with a 17% unemployment rate, suggests that the local population is being priced out of their own growth. The reliance on tourism and airport transit provides high "multiband" transaction

volume, but this capital does not appear to be translating into a diversified or stable local labor market.

Multiculturalism as a Mandatory National Curriculum In districts like Leiria, multiculturalism is no longer a policy choice but a demographic reality. The presence of [137 different nationalities](#) in a single city has forced a shift in education. The "Rede Muse" and Erasmus programs are moving away from traditional instruction toward "transformative social functions," using cultural exchange to prevent the formation of parallel societies. This represents a trend where social inclusion is being treated as a critical national security measure.

Digital Sovereignty and the Global South The presence of a United Nations University unit in Guimarães focused on digital governance signifies a shift in how geopolitical influence is wielded. By providing the [technological blueprints for governments](#) in Africa and the PALOP countries, Portugal and the UN are shaping the future regulatory and operational environments of these nations. This "digital statecraft" ensures that the governance models of the future remain aligned with European and UN standards.

STRATEGIC FORESIGHT

Short Term (1-4 Weeks): Continued mobilization of youth delegations to Ukraine and Sweden will likely see a spike in social media-driven "digital citizenship" campaigns. In Madeira, local authorities may face increased pressure to address the [isolation of the elderly](#), as Santa Cruz currently holds the highest population of isolated persons in the region.

Medium Term (1-6 Months): As Lviv enters its second half as European Youth Capital,

expect Portugal to host high-level summits on [psychological trauma in conflict zones](#). Economically, the real estate market in Madeira is ripe for a correction or a government intervention (such as rent caps or new social housing initiatives) due to the low construction dynamic relative to population growth.

Long Term (1-5 Years): The research coming out of UNU-EGOV in Guimarães will likely dictate the [digital transformation policies](#) of several African nations. If successful, Portugal will be viewed as the primary architect of digital administration in the Lusophone world. Conversely, if the integration of the 44,000+ foreign residents in Leiria and Madeira fails to produce economic mobility, the region may see a rise in populist political movements challenging current "soft power" approaches.

RECOMMENDATIONS & IMPLICATIONS

For International Policy:

- **Prioritize Mental Health in Security Frameworks:** The 34% figure for [youth mental health needs](#) in Ukraine suggests that post-conflict stability will depend as much on psychological infrastructure as on physical reconstruction.
- **Expand Digital Governance Export:** Western nations should coordinate with the UNIGov in Guimarães to ensure that [AI and sustainability standards](#) are embedded in the early-stage digital architectures of Global South governments.

- **Monitor Demographic Tipping Points:** Social cohesion programs should be scaled proportionally to migrant population growth, especially in areas where [foreign students form a majority](#), to prevent social fragmentation.

For Private Sector/Investors:

- **Real Estate Volatility:** Investors should be cautious of the Santa Cruz/Caniço market; the [90% price increase](#) indicates a potential bubble, especially given the low dynamic of new residential construction.
- **Digital Infrastructure Opportunities:** The focus on digital transformation for Africa via the UN hub in Guimarães creates a pathway for [tech companies specializing in e-governance](#) and sustainable "clean" technologies.
- **Tourism Diversification:** With Santa Cruz and the airport area seeing [high transaction volumes](#) from Germany, France, and Poland, there is significant room for luxury and service-based investments targeting the resident foreign population (ex-pats), not just transient tourists.

ABOUT THIS REPORT

Today's Media Trends is a public interest experiment in applying deep thematic trend analysis to television news coverage from around the world to explore how responsibly applied advanced AI can help journalists and scholars better understand the overarching trends, themes and patterns of our global world.

No data is used to train or tune any AI model.

Each morning, in collaboration with the Internet Archive's TV News Archive, we apply

Google's Gemini 3 to deeply examine yesterday's coverage from each television news channel to tease out the overarching themes and trends of its news coverage into a richly annotated thematic analysis. Each high-level insight is connected back to the original broadcast, allowing journalists and scholars to understand the dominant themes and trends and instantly click out to the underlying sources for details.

By helping journalists and scholars see the broader trends and patterns of global news coverage, this analysis helps them identify relevant stories and coverage they might not otherwise have encountered and uncover

connections, emphases and narrative shifts that enable more comprehensive reporting and deeper, evidence-based research.

This report is entirely machine generated using Gemini 3 and may include errors and omissions. Please verify all findings. No data is used to train or tune any AI model.

For questions or suggestions, please contact kalev.leetaru5@gmail.com. You can also learn more about the GDEL Project at <https://blog.gdelproject.org/> and the Internet Archive's TV News Archive at <https://archive.org/details/tv>.