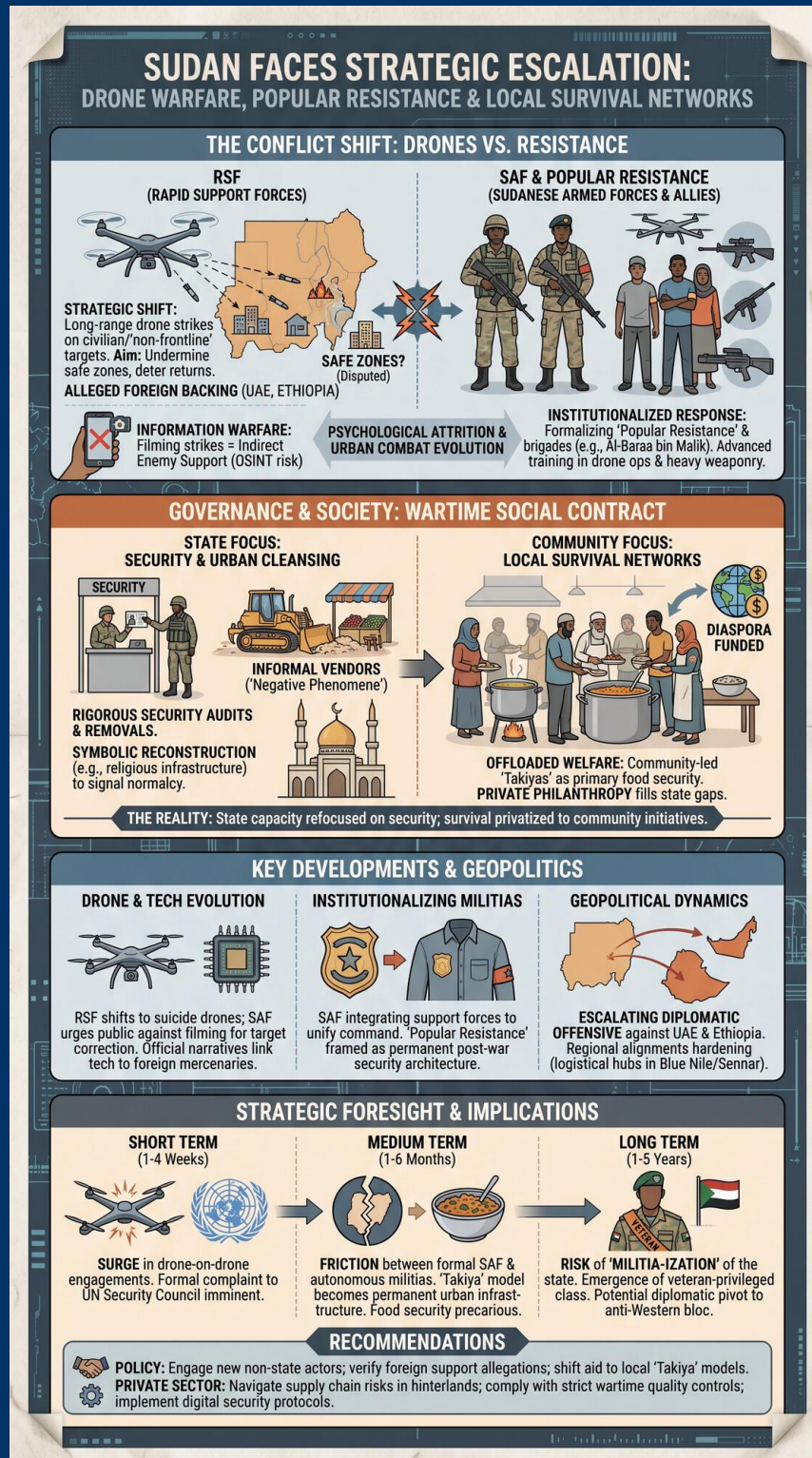


# TODAY'S MEDIA TRENDS

## SUDAN

MAY 4, 2026

THE GDELT PROJECT



# TODAY'S MEDIA TRENDS

## SUDAN

MAY 4, 2026

---

### SUDAN FACES STRATEGIC ESCALATION VIA RSF DRONE WARFARE WHILE CONSOLIDATING POPULAR RESISTANCE AND LOCAL SURVIVAL NETWORKS

#### DAY-AT-A-GLANCE

---

The Sudanese conflict has entered a critical phase characterized by a strategic shift in the Rapid Support Forces (RSF) tactics, moving toward long-range drone strikes on civilian and "non-frontline" targets. This escalation, frequently attributed by state media to foreign backing from the UAE and Ethiopia, aims to undermine the narrative of "safe zones" and deter the growing trend of voluntary civilian returns to the capital. In response, the Sudanese Armed Forces (SAF) and regional administrations are accelerating the institutionalization of "Popular Resistance" units, providing advanced training in drone operation and heavy weaponry to civilian volunteers and ideologically aligned brigades like Al-Baraa bin Malik.

Governance in SAF-controlled areas is increasingly defined by a "wartime social contract." The state has largely offloaded humanitarian welfare to community-led

initiatives—specifically "Takiyas" (community kitchens) funded by the Sudanese diaspora—while refocusing its own capacity on "urban cleansing." This involves rigorous security audits of residential neighborhoods, the removal of informal vendors categorized as "negative phenomena," and the reconstruction of religious infrastructure as a symbol of returning normalcy. Simultaneously, the state is intensifying its information warfare, warning citizens that filming strike locations or consuming "militia-driven" digital content constitutes an act of indirect support for the enemy.

#### MAJOR DEVELOPMENTS

---

##### The Evolution of Drone Warfare and Information Security

- The RSF (referred to as the "militia") has significantly increased its use of [long-range suicide drones](#) to target civilian centers in Al-Jazeera, Al-Butana, and the River Nile states, marking a shift from direct combat to psychological attrition.
- Military analysts are urging the public to cease [filming impact sites](#) with smartphones, as this data allows the RSF to perform "target correction" and assess the effectiveness of their strikes in real-time.
- Official narratives now explicitly link drone technology and technical expertise to [foreign entities and mercenaries](#), specifically alleging Emirati facilitation of advanced weaponry.

## **Institutionalization of Irregular and Support Forces**

- The SAF is formalizing the integration of various "support forces," such as the [Al-Qubba group](#), into its formal command structure to ensure unified operations and mitigate the risk of factionalism.
- In White Nile and Gezira, the Al-Baraa bin Malik brigade and the Popular Resistance have shifted from basic training to [advanced combat skills](#), including drone warfare and "support weaponry" tactics.
- State governments are framing the "Popular Resistance" as a [permanent security architecture](#) that will transition into "reconstruction" efforts following the cessation of hostilities.

## **Post-War Urban Governance and "Security Audits"**

- The Governor of Khartoum has mandated that [residents audit their neighborhoods](#) to identify "suspicious" newcomers or residents, effectively deputizing the populace for counter-intelligence.
- Urban planning is being utilized as a security tool, with authorities [removing informal markets and street vendors](#) near industrial zones in Omdurman to eliminate potential covers for militia activity or "negative social phenomena."
- Symbolic reconstruction is underway, highlighted by the [rehabilitation of the Sheikh Khalifa Mosque](#) and associated religious centers in Omdurman to signal the restoration of the "Khatmiyya Sufi" cultural heritage.

## **KEY GOVERNANCE TOPICS**

---

### **Geopolitical Power Dynamics & State Foreign Policy**

- The Sudanese government is escalating its diplomatic offensive against the UAE and Ethiopia, culminating in a press conference to provide [documented evidence of aggression](#) by these states in support of the RSF.
- Regional alignments are hardening, with Blue Nile and Sennar states serving as [logistical hubs for aid convoys](#) aimed at reinforcing the SAF's "Southern Command" and demonstrating cross-state solidarity.

### **Domestic Stability & Social Order**

- The voluntary return of [31 busloads of citizens](#) from Egypt to Tuti Island is being used as a high-profile case study of "state-led stabilization" to encourage other refugees to return.
- The National Cooperative Institution is expanding its role as a [parallel welfare provider](#), focusing specifically on the families of "martyrs" to maintain morale within the military ranks.

### **Regulatory Environment & Consumer Protection**

- The Sudanese Standards and Metrology Organization (SSMO) in River Nile State is maintaining strict [quality controls on textiles](#) and used clothing, ostensibly to prevent the entry of "inferior materials" and biological contaminants (bacteria/fungi) that could exacerbate wartime health crises.

- Testing of [non-woven materials like diapers](#) and medical gauze is ongoing, indicating a state effort to manage essential supply chains despite the collapse of the national industrial base.

## **Economic Security & Critical Infrastructure**

- The Governor of Khartoum noted that [water and electricity restoration](#) are the primary preconditions for the return of displaced persons, though these facilities remain high-value targets for militia disruption.
- The "Takiya" system is now the primary [food security mechanism](#) for thousands of families in Omdurman, revealing a significant gap between state rhetoric of "normalcy" and the reality of mass food insecurity.

## **LEGISLATIVE ROUNDUP**

---

Legislative activity has been supplanted by executive decrees and security directives issued under the umbrella of the state of emergency. Formal policy is currently directed toward the "reintegration of support forces" and the "regulation of the Popular Resistance."

### **BILLS DISCUSSED/DEBATED:**

- **Reintegration of Support Forces Directives:** Administrative protocols to standardize the uniforms, [legal status, and deployment](#) of irregular pro-SAF fighters under the "Karamah" (Dignity) operation.
- **National Umma Party Institutional Reform:** Internal debates regarding the [legitimacy of party leadership](#) and the split between institutionalists and those aligned with the "militia."

### **HEARINGS & PRESS EVENTS:**

- **Ministerial Press Conference on Foreign Aggression:** A joint briefing by the Ministers of Foreign Affairs, Information, and the SAF Spokesperson detailing [documented "Ethiopian-Emirati" interference](#).
- **Omdurman Security Council Briefing:** Governor Ahmed Osman Hamza outlined new [regulatory standards for residential areas](#) and the removal of "negative phenomena" from industrial zones.

## **DEEP DIVE: TRENDS AND THEMES**

---

### **The Weaponization of Information and Digital Sovereignty**

The state is increasingly framing smartphone usage and social media activity as a national security vulnerability. The recurring warnings against [filming military movements](#) or strike results suggest the SAF is struggling to manage the "open-source intelligence" (OSINT) advantage currently held by the RSF. By characterizing the consumption of certain digital content as a ["psychological war"](#) managed by global experts, the state is preparing the domestic narrative for stricter digital controls and potential censorship in the name of "media security."

### **From Military Resistance to Ideological Indoctrination**

The "Popular Resistance" is evolving from a reactive militia into an ideological project. Programs like the [computer science training](#) for children of martyrs, sponsored by the Al-Baraa bin Malik brigade (often associated with Islamist factions), indicate an effort to build long-term loyalty among the next

generation. The focus on ["advanced training"](#) in drones and heavy weapons for these groups suggests that even if the formal war ends, a highly militarized and ideologically committed "shadow army" will remain a permanent fixture of the Sudanese security landscape.

### **The Privatization of Humanitarian Relief**

A notable trend is the "civilianization" of survival. While the government focuses on [military ceremonies and sports festivals](#), the actual work of feeding and medicating the population has shifted to individual philanthropists like Suhanda Abdel Wahab and Osman Al-Jundi. Their initiatives, such as the ["Fak-Tirayk" food program](#), rely heavily on expatriate funding, highlighting the state's inability (or refusal) to provide a centralized welfare system, thereby creating localized power centers based on the control of food and medicine.

## **STRATEGIC FORESIGHT**

**Short Term (1-4 Weeks):** Expect a surge in drone-on-drone engagements as the SAF deploys its own newly trained Popular Resistance drone units to counter RSF strikes. The rhetoric against the UAE and Ethiopia will likely culminate in a formal complaint to the UN Security Council, using the "documented evidence" presented in the May 4th briefings. Increased "security sweeps" in Omdurman and Northern State will likely lead to arrests of suspected "sleeper cells" among recently returned displaced persons.

**Medium Term (1-6 Months):** The divergence between the institutionalized Popular Resistance and the formal SAF command may create friction as these units gain more autonomy and "support weaponry." Efforts to return refugees from Egypt will likely face setbacks if RSF drone strikes

continue to penetrate [deep into "safe" northern and eastern states](#). Food security will remain precarious, with the "Takiya" model likely becoming the permanent social infrastructure for urban Sudan as the formal economy remains stagnant.

**Long Term (1-5 Years):** Sudan is at risk of "militia-ization" of the state, where various "support forces" and "Popular Resistance" committees become the primary local government authorities. The heavy focus on "martyr families" suggests the emergence of a veteran-privileged social class, similar to post-revolutionary Iran. Diplomatic relations with the UAE and Ethiopia may be irreparably damaged, leading Sudan to pivot more aggressively toward an "anti-Western/anti-regional" bloc for military and economic survival.

## **RECOMMENDATIONS & IMPLICATIONS**

### **For International Policy:**

- Monitor the "Popular Resistance" as it transitions into a permanent political-military actor; diplomatic engagement must account for these non-state actors who now control [territorial security and social services](#).
- Verify the allegations of Emirati-Ethiopian military support for the RSF, as a formal state-level escalation could [destabilize the entire Horn of Africa](#) and Red Sea trade routes.
- Shift humanitarian aid strategy to support the decentralized "Takiya" and "Fak-Tirayk" models, as they have proven more [resilient and effective](#) than centralized state channels.

## For Private Sector/Investors:

- **Supply Chain Risk:** Ongoing drone strikes on "safe" hinterlands mean that logistics hubs in River Nile and Northern states are [no longer immune](#) to disruption.
- **Regulatory Compliance:** Investors in the medical and textile sectors must navigate the SSMO's [stringent and potentially protectionist](#) wartime quality controls, which may be used to favor "patriotic" businesses.
- **Security Standards:** Private entities must implement "digital hygiene" protocols for staff in Sudan to avoid [inadvertently providing OSINT](#) to combatants, which could lead to legal or physical repercussions from state security services.

## ABOUT THIS REPORT

---

**Today's Media Trends** is a public interest experiment in applying deep thematic trend analysis to television news coverage from around the world to explore how responsibly applied advanced AI can help journalists and scholars better understand the overarching trends, themes and patterns of our global world.

**No data is used to train or tune any AI model.**

Each morning, in collaboration with the Internet Archive's TV News Archive, we apply Google's Gemini 3 to deeply examine yesterday's coverage from each television news channel to tease out the overarching themes and trends of its news coverage into a richly annotated thematic analysis. Each high-level insight is connected back to the original broadcast, allowing journalists and scholars to understand the dominate themes and trends and instantly click out to the underlying sources for details.

By helping journalists and scholars see the broader trends and patterns of global news coverage, this analysis helps them identify relevant stories and coverage they might not otherwise have encountered and uncover connections, emphases and narrative shifts that enable more comprehensive reporting and deeper, evidence-based research.

This report is entirely machine generated using Gemini 3 and may include errors and omissions. Please verify all findings. No data is used to train or tune any AI model.

For questions or suggestions, please contact [kalev.leetaru5@gmail.com](mailto:kalev.leetaru5@gmail.com). You can also learn more about the GDEL Project at <https://blog.gdelproject.org/> and the Internet Archive's TV News Archive at <https://archive.org/details/tv>.