

# TODAY'S MEDIA TRENDS

TTV

MAY 4, 2026

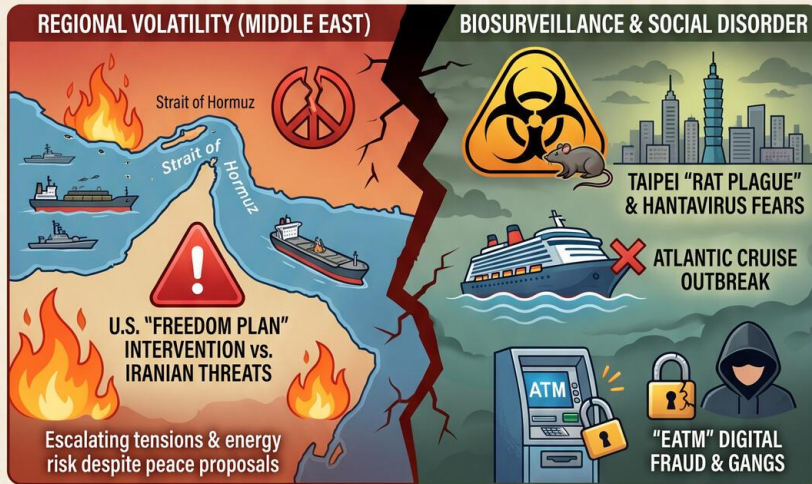
T H E G D E L T P R O J E C T

## TAIWAN 2026: THE SILICON SHIELD IN A VOLATILE WORLD. AI Breakthroughs, Strategic Satellites, and Emerging Threats. May 4, 2026 Report.

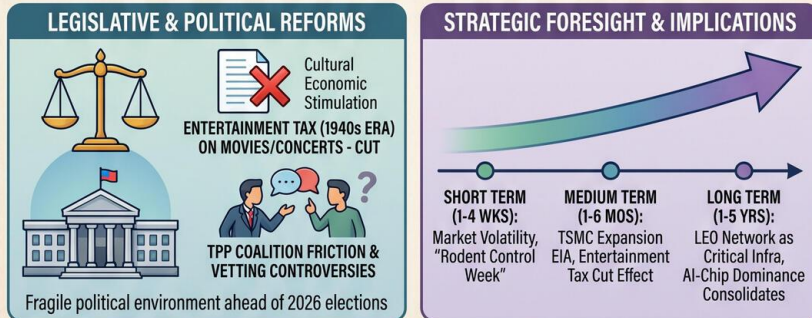
### RECORD SURGE: AI & AEROSPACE ASCENSION



### GLOBAL & DOMESTIC CRISES: A FRACTURED LANDSCAPE



### GOVERNANCE, LEGISLATION & FUTURE STRATEGY



EVOLVING SILICON SHIELD: From foundry to a financial & technological 'Exoskeleton' protecting global standing

# TODAY'S MEDIA TRENDS

TTV

MAY 4, 2026

---

TAIWAN EQUITY MARKETS SURGE  
AMID AI BREAKTHROUGHS,  
STRATEGIC SATELLITE LAUNCHES,  
AND EMERGING BIOSURVEILLANCE  
THREATS

## DAY-AT-A-GLANCE

---

May 4, 2026, marked a period of extreme contrast for Taiwan, characterized by historic financial triumphs and significant domestic and international security challenges. The Taiwan Stock Exchange (TWSE) shattered records, crossing the 40,000-point threshold for the first time, driven by insatiable global demand for AI-related semiconductors and positive sentiment regarding TSMC's domestic manufacturing expansion. This economic optimism is bolstered by Taiwan's advancing "Silicon Shield," which is now extending into space with the successful launch of Hon Hai's second-generation low-earth orbit (LEO) satellites. However, this progress is occurring against a backdrop of increasing regional volatility, notably the U.S. "Freedom Plan" intervention in the Strait of Hormuz and subsequent Iranian threats to ceasefire agreements.

Domestically, the administration is grappling with a multi-front governance crisis. A significant rodent infestation in Taipei—dubbed the "rat plague"—has triggered localized Hantavirus fears, coinciding with a deadly Hantavirus outbreak on a cruise ship in the Atlantic. These biosurveillance concerns are compounded by high-profile criminal cases involving "EATM" digital bank fraud and a high-profile life sentence for a serial poisoner. Legislative efforts to reform the 1940s-era entertainment tax signify a government attempt to modernize the economy, yet internal political friction within the Taiwan People's Party (TPP) and controversies surrounding the residency status of mainland-born spouses suggest a fragile coalition environment as the 2026 election cycle begins to heat up.

## MAJOR DEVELOPMENTS

---

- **Semiconductor and Equity Market Supremacy:** The Taiwan stock market reached a [record high of 40,705 points](#), led by a massive surge in TSMC and MediaTek valuations. Analysts credit this to the "AI wave" and the anticipated restart of the TSMC Longtan Phase 3 expansion, which is projected to involve [investments up to 600 billion TWD](#) for 1.4nm production.
- **Escalating Middle East Maritime Tensions:** U.S. President Trump announced the "Freedom Plan" to deploy the U.S. military to [assist ships trapped](#) in the Strait of Hormuz. Iran immediately warned that this action [violates current ceasefire agreements](#), threatening renewed conflict despite a 14-point peace proposal on the table.

- **Taiwanese Aerospace Advancement:** Hon Hai (Foxconn) successfully launched its second-generation "Pearl 3" LEO satellites via SpaceX, marking a shift from component supply to [mastering core satellite communication technologies](#) and enhancing Taiwan's space-based infrastructure.
- **Biosurveillance Crisis:** A deadly outbreak of suspected Hantavirus on a cruise ship in the Atlantic has [claimed at least three lives](#), while Taipei faces a domestic "rat plague" concentrated near Taipei 101, leading to calls for a [rodent infestation map](#) and urgent chemical interventions.
- **Legislative Reform of Entertainment Taxes:** The Legislative Yuan passed the third reading of amendments to the Entertainment Tax Law, [removing taxes on movies and concerts](#) while maintaining levies on claw machines and golf, highlighting a shift toward cultural economic stimulation.

## KEY GOVERNANCE TOPICS

---

**AI and Technology Policy:** The integration of AI into healthcare is accelerating, with new models achieving a [73% identification rate](#) for early-stage pancreatic cancer, significantly outperforming human clinicians. Meanwhile, the semiconductor sector is seeing a shift toward [inference-based chip demand](#), prompting MediaTek and others to adjust long-term production strategies to meet the next decade of AI requirements.

**Geopolitical Power Dynamics:** President Lai Ching-te's visit to Eswatini emphasizes Taiwan's [diplomatic resilience and strategic depth](#). The visit focused on agricultural cooperation and the development of [strategic oil reserves](#), aiming to bolster energy security

in the face of potential blockades. International observers, including the U.S. State Department, have praised Taiwan's [ability to maintain partnerships](#) despite sustained pressure from Beijing.

**Domestic Stability and Social Order:** Public safety is under scrutiny following a wave of violent and drug-related crimes. A BMW driver, suspected of being under the influence of drugs, [caused a fatal collision](#) in Tainan, killing a newlywed. Simultaneously, law enforcement is uncovering sophisticated gang structures, such as the "Three Kingdoms" syndicate, which uses [virtual ATM testing \(EATM\)](#) to launders funds and verify stolen cards through remote computer terminals.

**Biosurveillance and Disease Outbreaks:** The convergence of the Atlantic cruise ship outbreak and Taipei's local rodent crisis has elevated Hantavirus to a top-tier security concern. Health officials warned that [cleaning rodent droppings improperly](#) (via vacuuming or sweeping) can aerosolize the virus, increasing infection risks. The WHO is currently coordinating with multiple nations to [assess the public health risk](#) of the cruise ship event.

**Corruption and Governance:** Internal political disputes within the TPP have surfaced, with former legislator Li Zhenxiu criticizing the party's "Black Box" leadership and [questioning the transparency](#) of the party's legislator-at-large list. Additionally, the residency status of Xu Chunying is under review, with officials considering [revoking her Taiwan identity](#) due to allegations of fraudulent entry and ties to foreign intelligence.

## LEGISLATIVE ROUNDUP

---

The Legislative Yuan has been active in addressing economic modernization and nationality-based security risks. Key debates have focused on fiscal autonomy for local governments and the vetting process for individuals holding dual-party or foreign-state affiliations.

### BILLS DISCUSSED/DEBATED:

- **Entertainment Tax Law Amendments:** Successfully passed the third reading; [eliminates the 1942-era tax](#) on movies, concerts, and athletic competitions, while delegating the power to suspend taxes on other categories to local governments.
- **Cross-Strait People's Relations Act (Vetting Mechanism):** Proposed amendments would require the Ministry of the Interior to [proactively provide proof](#) of the loss of original nationality for mainland-born spouses seeking public office, with a mandatory 10-year residency requirement after surrendering foreign documents.
- **National Defense Special Regulations:** Undergoing a [fourth round of negotiations](#); focuses on streamlining defense procurement and addressing internal dissent within the KMT regarding the 380 billion TWD budget allocation.

### HEARINGS & PRESS EVENTS:

- **Ministry of Environment Presser:** Clarified that chemical rodent control is a [measure of last resort](#) and urged the Taipei City Government to prioritize sanitation ("No Food, No Entry, No Nesting") over mass poisoning.

- **CEC and Mainland Affairs Council Briefing:** Addressed the nationality controversy of Li Zhenxiu, confirming that a [10-year period must elapse](#) after the official renunciation of a foreign passport before an individual is eligible for public office.
- **Taipei City Government Briefing:** Mayor Chiang Wan-an defended the city's [cross-departmental rodent control efforts](#), denying reports of "blind" chemical distribution.

## DEEP DIVE: TRENDS AND THEMES

---

**The Evolution of the Silicon Shield:** Taiwan is no longer content with being the world's foundry; it is aggressively moving into system-level integration. The launch of Hon Hai's LEO satellites represents a strategic pivot toward [digital sovereignty](#), ensuring that Taiwan maintains communication capabilities independent of undersea cables, which are vulnerable to sabotage. The record-breaking performance of the TWSE, specifically the [over-performance of AI component stocks](#), suggests that the "Silicon Shield" is now a financial and technological "exoskeleton" protecting Taiwan's global standing.

**Biosurveillance as a Proxy for State Capacity:** The "rat plague" in Taipei and the Hantavirus outbreak abroad are testing the administrative resilience of the city and national governments. The demand for "poisoning maps" and the [clash between local and central environmental agencies](#) reveal a lack of a unified biosurveillance protocol. As urbanization continues, the management of urban pests is being elevated from a sanitation issue to a [national security threat](#) due to the potential for epidemic spread.

**Fragmenting Third-Party Coalitions:** The TPP is experiencing severe internal fractures. The public "acidic" exchanges between former and current members regarding [election failures](#) and ["装模作样" \(pretentious leadership\)](#) suggest that the party's cohesion is deteriorating. This fragmentation may benefit the KMT in the 2026 New Taipei City mayoral race, where Li Sichuan is [actively courting young voters](#) via social media, a traditional TPP stronghold.

## **STRATEGIC FORESIGHT**

---

**Short Term (1-4 Weeks):** Expect heightened market volatility as the TWSE tests the durability of the 40,000-point support level. The U.S. "Freedom Plan" in the Strait of Hormuz will likely result in [spiking oil prices](#) and increased naval patrols by Iran's IRGC. Domestically, Taipei will likely initiate a city-wide "Rodent Control Week" following public outcry over rat-bite incidents [involving sleeping residents](#).

**Medium Term (1-6 Months):** The implementation of the amended Entertainment Tax Law will likely lead to a [decrease in ticket prices](#) for major international concerts and domestic films, potentially boosting the consumer services sector. TSMC's Longtan expansion will enter the environmental impact assessment phase, which could revive [land compensation disputes](#) with local residents' associations.

**Long Term (1-5 Years):** Taiwan's LEO satellite constellation will likely become a critical component of the [regional security architecture](#), providing a backup for the island's internet. The shift toward ASIC and AI-specific chips will consolidate Taiwan's 90% share of the [advanced semiconductor](#)

[market](#), making global supply chains even more dependent on cross-strait stability.

## **RECOMMENDATIONS & IMPLICATIONS**

---

### **For International Policy:**

- The U.S. and allies should formalize a maritime security framework that addresses the [Freedom Plan's implications](#) for global energy flows and ceasefire longevity.
- Public health agencies should increase information sharing regarding Hantavirus strains, as the cruise ship outbreak suggests a [potential shift in transmission dynamics](#) or virulence.
- Diplomatic efforts should focus on integrating Taiwan into LEO satellite [regulatory and safety frameworks](#) to prevent orbital congestion and enhance collective security.

### **For Private Sector/Investors:**

- **Investment Opportunity:** The expansion of TSMC's 1.4nm production capacity offers [major downstream opportunities](#) for equipment suppliers like Fanuc, Gudeng, and Grand Process Technology (GPTC).
- **Supply Chain Risk:** Ongoing tensions in the Strait of Hormuz present a [continued risk to energy-intensive manufacturing industries](#) in Asia.
- **Regulatory Compliance:** Investors in the Taiwanese tech sector should monitor the [tightening of residency and nationality laws](#), which may impact talent recruitment from mainland China or Southeast Asia.

## ABOUT THIS REPORT

---

**Today's Media Trends** is a public interest experiment in applying deep thematic trend analysis to television news coverage from around the world to explore how responsibly applied advanced AI can help journalists and scholars better understand the overarching trends, themes and patterns of our global world.

**No data is used to train or tune any AI model.**

Each morning, in collaboration with the Internet Archive's TV News Archive, we apply Google's Gemini 3 to deeply examine yesterday's coverage from each television news channel to tease out the overarching themes and trends of its news coverage into a richly annotated thematic analysis. Each high-level insight is connected back to the original broadcast, allowing journalists and scholars to understand the dominate themes and trends

and instantly click out to the underlying sources for details.

By helping journalists and scholars see the broader trends and patterns of global news coverage, this analysis helps them identify relevant stories and coverage they might not otherwise have encountered and uncover connections, emphases and narrative shifts that enable more comprehensive reporting and deeper, evidence-based research.

This report is entirely machine generated using Gemini 3 and may include errors and omissions. Please verify all findings. No data is used to train or tune any AI model.

For questions or suggestions, please contact [kalev.leetaru5@gmail.com](mailto:kalev.leetaru5@gmail.com). You can also learn more about the GDEL T Project at <https://blog.gdel tproject.org/> and the Internet Archive's TV News Archive at <https://archive.org/details/tv>.