

TODAY'S MEDIA TRENDS

CCTV1

MAY 6, 2026

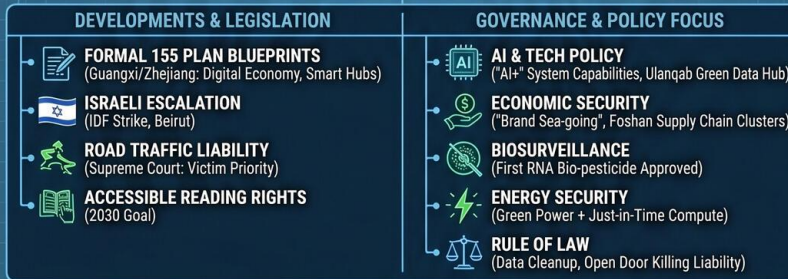
T H E G D E L T P R O J E C T

CHINA'S STRATEGIC PIVOT: 15TH FIVE-YEAR PLAN AMIDST GLOBAL MARITIME BRINKMANSHIP & BIO-RISK ESCALATION (MAY 6, 2026)

DAY-AT-A-GLANCE: THE PIVOT & CRISES



MAJOR DEVELOPMENTS & KEY GOVERNANCE TOPICS



DEEP DIVE: TRENDS & THEMES



STRATEGIC FORESIGHT & RECOMMENDATIONS



TODAY'S MEDIA TRENDS

CCTV1

MAY 6, 2026

CHINA STRATEGIC PIVOT TOWARD 15TH FIVE-YEAR PLAN AMIDST GLOBAL MARITIME BRINKMANSHIP AND BIO-RISK ESCALATION

DAY-AT-A-GLANCE

May 6, 2026, marks a pivotal moment in Chinese governance as the state formally transitions its rhetorical and bureaucratic focus toward the "15th Five-Year Plan" (155) targets for 2030. High-level briefings from provincial leaders in Guangxi and Zhejiang emphasize "New Quality Productive Forces" and AI-integrated industry as the primary engines for reaching "developed economy" parity. This domestic push coincides with a massive release of consumer data from the "Five-One" (May Day) holiday, where record-breaking mobility of over 1.5 billion passenger trips is being used to validate the state's "New-for-Old" subsidy programs and the resilience of the internal market.

Simultaneously, the geopolitical environment is characterized by extreme volatility in the Middle East and a burgeoning public health crisis at sea. The Trump administration's claim of a "comprehensive agreement" with Iran is met with skepticism and contradictory

actions, as Iran implements a unilateral maritime management mechanism in the Strait of Hormuz, effectively transforming the strategic chokepoint into a "toll station." This maritime friction is exacerbated by renewed Israeli strikes in Lebanon, marking the first major breach of the April 17 truce. Meanwhile, the discovery of a Hantavirus outbreak on the *Redelius* cruise ship—with suspected human-to-human transmission—has introduced a significant biological risk factor into international transit corridors, prompting emergency responses from the WHO and European health authorities.

MAJOR DEVELOPMENTS

- **Formal Initiation of 15th Five-Year Plan Blueprints:**
 - Guangxi and Zhejiang provinces held thematic press conferences detailing 2030 targets, focusing on digital economy integration and [high-quality development](#) indicators.
 - Targets include achieving per-capita GDP levels near developed economies and establishing "Smart Zhejiang" as a global [innovation hub](#).

- **Strait of Hormuz Conflict and Maritime Blockade:**

- U.S. President Trump announced a pause in "Freedom of Navigation" operations while claiming a "major breakthrough" in [negotiations with Iran](#).
- Iran countered by launching a "Unified Maritime Management Mechanism," warning that ships deviating from [designated lanes](#) will face "resolute responses."
- The maritime standoff has severely restricted traffic, with daily transits [dropping to six vessels](#) compared to pre-conflict levels.

- **Emergent Hantavirus Outbreak on Global Transit:**

- The *Redelius* cruise ship reported eight infections and [three deaths](#) from Hantavirus Pulmonary Syndrome (HPS).
- WHO officials warned of potential [human-to-human transmission](#), a rare and dangerous mutation for a virus typically spread via rodents.
- Spain agreed to receive the vessel in the Canary Islands under [international humanitarian pressure](#).

- **Post-Holiday Economic Consumption Surge:**

- Total passenger flow during the May Day holiday reached [1.517 billion](#), a historical high.
- State-led "New-for-Old" subsidies drove a [200% increase](#) in smart appliance sales in regions like Guangdong and Hubei.

- **Israeli Escalation in Lebanon:**

- The Israeli Defense Forces (IDF) conducted a targeted strike in Beirut, killing a [Hezbollah commander](#) from the Radwan unit.
- This action represents the most significant [violation of the truce](#) established on April 17, 2026.

KEY GOVERNANCE TOPICS

AI & Technology Policy: The state is aggressively pushing for the "AI+" initiative, moving beyond mere algorithms to "system capabilities." This is evidenced by the rapid expansion of the [Ulangab data hub](#), which leverages "green power" and natural cooling to support large-scale model training. Concurrently, the government is cracking down on AI-generated disinformation, recently arresting a suspect for [fabricating "man-made rice" rumors](#) using AI tools.

Economic Security & Supply Chains: The 134th Canton Fair (Guangzhou) signaled a shift from "OEM manufacturing" to "brand sea-going," with enterprises emphasizing [supply chain autonomy](#). The "half-hour circle" of suppliers in Foshan's manufacturing clusters is being touted as the [ultimate competitive edge](#) against rising global protectionism.

Biosurveillance & Food Security: China has approved its first [RNA biological pesticide](#), which uses gene-silencing technology to target specific pests like the diamondback moth without environmental residues. This marks a significant leap in [precision agriculture](#) and food safety standards for the 15th Five-Year Plan.

Energy Security: The integration of "Green Power" into data infrastructure is a top

priority. Systems in Inner Mongolia now use [predictive AI to adjust](#) wind and solar output to match the real-time compute demands of data centers, achieving a "just-in-time" energy model.

Rule of Law & Social Order: The Supreme People's Court released a judicial interpretation targeting ["Open Door Killings"](#) (accidents caused by passengers opening vehicle doors), clarifying that insurance companies must prioritize victim compensation. Furthermore, the state initiated a mass cleanup of [erroneous administrative penalty](#) data, clearing over 1 million records to protect corporate rights.

LEGISLATIVE ROUNDUP

Governance activity focused on the implementation of judicial standards for civil liability and the formalization of "Accessible Reading" rights for the disabled. Large-scale policy briefings centered on regional economic integration and the "155" planning phase.

BILLS DISCUSSED/DEBATED:

- **Road Traffic Accident Liability Interpretation:** Effective June 30, this Supreme People's Court [judicial interpretation](#) clarifies passenger liability and protects the labor rights of workers past the [legal retirement age](#) in accident claims.
- **Accessible Reading Guidance:** A joint directive from six departments, including the Ministry of Education, to establish a [comprehensive service system](#) for the visually impaired by 2030.

- **Cybersecurity Law Amendment (EU context):** Discussion of EU efforts to counter U.S. sanctions against [International Criminal Court](#) officials and the implications for digital sovereignty.

HEARINGS & PRESS EVENTS:

- **Guangxi/Zhejiang 15th Five-Year Plan Briefings:** Officials detailed shifts toward [marine economy](#) and AI-driven "Future Factories."
- **National Data Bureau International Cooperation Pilot:** Shanghai launched a [comprehensive pilot project](#) for international data cooperation, targeting 2030 for full integration.

DEEP DIVE: TRENDS AND THEMES

The Weaponization of Maritime Chokepoints: The situation in the Strait of Hormuz has shifted from military posturing to systemic economic coercion. Iran's new "Unified Management Mechanism" is described by analysts as the ["weaponization of passage,"](#) effectively allowing Tehran to extract rents or deny access under the guise of maritime safety. The U.S. response, oscillating between Trump's claims of an "imminent deal" and the maintenance of a [naval blockade](#), has created a "low-intensity conflict" that is driving global energy costs and insurance premiums to unsustainable levels.

The 15th Five-Year Plan as a "Digital Sovereignty" Pivot: While the 14th Five-Year Plan focused on basic digitization, the early rhetoric for the 15th Plan (2026-2030) emphasizes ["systemic capability."](#) This includes everything from RNA-based food security to the [Ulanqab "職院" \(Data Academy\)](#)

training specialized "Data Maintenance Engineers" rather than just high-level programmers. China is building a labor force and an infrastructure (Green Energy + Data Centers) specifically designed for a [post-algorithm AI economy](#).

Emergent Bio-Security Threats to Global Mobility: The *Redelius* Hantavirus incident is being treated as a high-priority "black swan" event. The potential for [human-to-human transmission](#) of Hantavirus Pulmonary Syndrome (HPS), which has a [33% mortality rate](#), poses a threat to the global tourism recovery. State media's detailed coverage of "Three Reds and Three Pains" (diagnostic symptoms) suggests a [high level of internal alert](#) regarding the spread of viral pathogens via maritime and aviation corridors.

STRATEGIC FORESIGHT

Short Term (1-4 Weeks): Expect severe volatility in oil prices as the Strait of Hormuz "toll" system becomes operational. If the *Redelius* cruise ship confirms human-to-human Hantavirus spread upon docking in the Canary Islands, international travel restrictions for South American and West African routes [may be reinstated](#). Domestic focus will remain on "Victory Day" (May 9) rhetoric in the Russia-Ukraine context, despite [ongoing kinetic operations](#).

Medium Term (1-6 Months): The formal drafting phase of the 15th Five-Year Plan will see a surge in government-led "Green Compute" contracts. The US-Iran standoff is likely to enter a [prolonged "blockade vs. toll" stalemate](#), further decoupling global shipping from traditional "freedom of navigation" norms. China will likely accelerate its [RNA pesticide rollout](#) to mitigate the impact of

rising chemical fertilizer costs caused by the energy crisis.

Long Term (1-5 Years): By 2030, China aims for a fully integrated [national compute network](#) powered by renewable energy. The diplomatic alignment with Bangladesh—specifically the rejection of challenges to [UN Resolution 2758](#)—signals a broader strategy to secure South Asian support for China's core interests as regional power dynamics shift in the Indian Ocean.

RECOMMENDATIONS & IMPLICATIONS

For International Policy:

- Governments must prepare for a "post-freedom of navigation" era in the Middle East, where regional actors exert [sovereign control over international straits](#) through administrative tolls rather than just military threats.
- The Hantavirus outbreak necessitates an immediate update to [maritime quarantine protocols](#) and a reassessment of zoonotic disease surveillance in South American transit hubs.
- Diplomatic engagement must account for China's solidification of its "155" goals, which prioritize [technological self-sufficiency](#) and "New Quality Productive Forces."

For Private Sector/Investors:

- **Supply Chain Risk:** Manufacturers should prioritize "Extreme Industrial Clustering" (the Foshan model) to mitigate the [rising costs of logistics](#) and international shipping instability.

- **Investment Opportunity:** Significant capital is flowing into "[Green Computing infrastructure](#)" in North China (Ulanqab) and bio-tech agriculture (RNA pesticides), which are state-protected growth sectors.
- **Legal Compliance:** Companies operating in China must adapt to the new [judicial interpretations on insurance and liability](#), which increasingly favor social protections and "goodwill" actions in civil disputes.

ABOUT THIS REPORT

Today's Media Trends is a public interest experiment in applying deep thematic trend analysis to television news coverage from around the world to explore how responsibly applied advanced AI can help journalists and scholars better understand the overarching trends, themes and patterns of our global world.

No data is used to train or tune any AI model.

Each morning, in collaboration with the Internet Archive's TV News Archive, we apply Google's Gemini 3 to deeply examine yesterday's coverage from each television

news channel to tease out the overarching themes and trends of its news coverage into a richly annotated thematic analysis. Each high-level insight is connected back to the original broadcast, allowing journalists and scholars to understand the dominate themes and trends and instantly click out to the underlying sources for details.

By helping journalists and scholars see the broader trends and patterns of global news coverage, this analysis helps them identify relevant stories and coverage they might not otherwise have encountered and uncover connections, emphases and narrative shifts that enable more comprehensive reporting and deeper, evidence-based research.

This report is entirely machine generated using Gemini 3 and may include errors and omissions. Please verify all findings. No data is used to train or tune any AI model.

For questions or suggestions, please contact kalev.leetaru5@gmail.com. You can also learn more about the GDEL Project at <https://blog.gdelproject.org/> and the Internet Archive's TV News Archive at <https://archive.org/details/tv>.