

# TODAY'S MEDIA TRENDS

## PALESTINETV

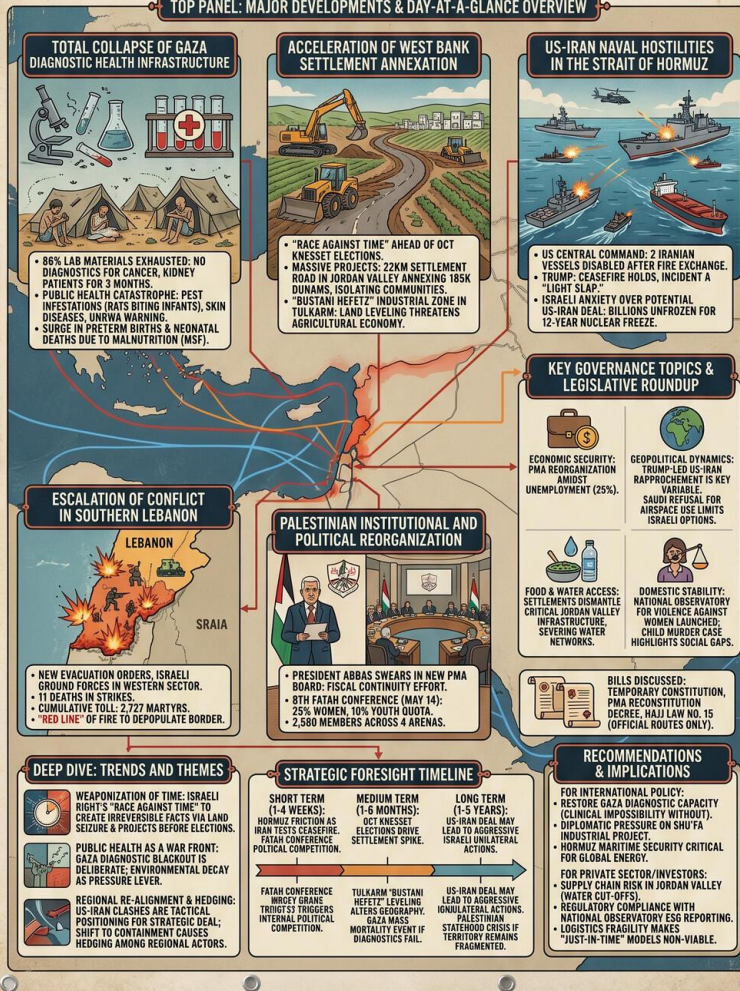
MAY 8, 2026

THE GDELT PROJECT

### GAZA'S HUMANITARIAN COLLAPSE & AGGRESSIVE WEST BANK SETTLEMENT EXPANSION COINCIDE WITH ESCALATING US-IRAN NAVAL HOSTILITIES IN THE STRAIT OF HORMUZ.

DAY-AT-A-GLANCE: MAY 8, 2026 REPORT SUMMARY & STRATEGIC FORESIGHT

TOP PANEL: MAJOR DEVELOPMENTS & DAY-AT-A-GLANCE OVERVIEW



# TODAY'S MEDIA TRENDS

PALESTINETV

MAY 8, 2026

---

GAZA'S HUMANITARIAN COLLAPSE  
AND AGGRESSIVE WEST BANK  
SETTLEMENT EXPANSION  
COINCIDE WITH ESCALATING US-  
IRAN NAVAL HOSTILITIES IN THE  
STRAIT OF HORMUZ.

## DAY-AT-A-GLANCE

---

May 8, 2026, was characterized by a severe deterioration in the humanitarian situation in the Gaza Strip, where a total failure of diagnostic health services and a burgeoning public health crisis involving pest infestations in displacement camps have reached critical levels. Reports indicate that 86% of laboratory testing materials are exhausted, leaving thousands of chronic disease and cancer patients without diagnostic pathways. Simultaneously, the Israeli right-wing government appears to be accelerating settlement infrastructure projects across the West Bank in a "race against time" ahead of the Knesset elections scheduled for October, specifically targeting the Jordan Valley and the southern Tulkarm corridor for industrial and agricultural annexation.

Regionally, the security architecture is under extreme stress as naval skirmishes between

US and Iranian forces in the Strait of Hormuz threaten the stability of the recent month-long ceasefire. While the Trump administration characterizes these incidents as "minor," the Israeli security establishment is expressing deep anxiety over rumors of a burgeoning US-Iran deal that could freeze Iran's nuclear program in exchange for sanctions relief, potentially sidelining Israeli strategic interests. Amidst these pressures, the Palestinian leadership is attempting to project institutional stability through the swearing-in of a new Monetary Authority board and preparations for the 8th Fatah Conference, even as social cohesion is tested by high-profile domestic violence cases.

## MAJOR DEVELOPMENTS

---

### • Total Collapse of Gaza Diagnostic Health Infrastructure

- Medical officials report that [86% of laboratory testing materials](#) are out of service, halting blood gas, enzyme, and tumor marker tests for thousands of patients. [Cancer and kidney failure patients](#) have gone three months without essential monitoring, effectively ending their treatment pathways.
- The humanitarian situation in displacement camps has devolved into a public health catastrophe, with UNRWA warning of [predatory rat attacks](#) on sleeping children and the spread of skin diseases and parasites due to the collapse of waste management and sanitation. [Testimonies from mothers](#) in Deir al-Balah confirm infants are being bitten by rodents inside tents.
- Doctors Without Borders (MSF) reported a surge in [preterm births and neonatal deaths](#) directly linked to Israeli-induced malnutrition among pregnant and lactating women.

### • Acceleration of West Bank Settlement Annexation

- Israeli settlers are reportedly in a "race against time" to establish [dozens of new outposts](#) before the October Knesset elections, fearing a potential right-wing loss. This includes the legalization of 34 new settlements and the expansion of the "cow farm" strategy to seize land.
- Massive infrastructure projects are underway in the Jordan Valley, where a [22-kilometer settlement road](#) is being carved through Sahl al-Buqai'a, effectively annexing 185,000 dunams and isolating dozens of Palestinian farming communities.
- In Tulkarm, the "Bustani Hefetz" industrial zone project has moved into [active land leveling](#), threatening to bifurcate the southern Tulkarm countryside from the city center and destroy the local agricultural economy.

### • US-Iran Naval Hostilities in the Strait of Hormuz

- The US Central Command reported disabling two Iranian vessels attempting to enter an Omani port following [exchanges of fire](#) in the Strait of Hormuz. Iran claims it responded to a US attack on an oil tanker.
- Despite the skirmishes, President Trump stated that the [ceasefire remains in effect](#), characterizing retaliatory strikes as a "light slap."
- Israeli media reports widespread panic within the Netanyahu government over a [potential US-Iran deal](#) that would see billions of dollars unfrozen in exchange for a 12-year nuclear freeze, which Israel views as a strategic catastrophe.

- **Escalation of Conflict in Southern Lebanon**

- The Israeli military has issued [new evacuation orders](#) for seven southern Lebanese towns as ground forces attempt to advance in the western sector. Strikes in Nabatieh and Sidon have resulted in at least 11 deaths, including a civil defense medic.
- Lebanese health officials report a cumulative toll of [2,727 martyrs](#) since the escalation began, with Israeli forces reportedly creating a "red line" of fire to depopulate border villages.

- **Palestinian Institutional and Political Reorganization**

- President Abbas presided over the swearing-in of the new [Palestine Monetary Authority board](#), signaling a move toward fiscal continuity amidst regional instability.
- The 8th Fatah Conference is set to begin on May 14, with a mandated [25% quota for women](#) and a 10% quota for youth, aiming to rejuvenate the movement's leadership structure.

## **KEY GOVERNANCE TOPICS**

---

**Economic Security & Monetary Policy:** The reorganization of the Palestine Monetary Authority (PMA) board [under President Abbas](#) indicates an effort to maintain financial resilience in the face of erratic tax revenue transfers and high unemployment (estimated at 25% in some refugee camps). Business incubators at Hebron's Palestine Polytechnic University are attempting to pivot [youth toward self-employment](#), though market access remains a primary constraint.

**Geopolitical Power Dynamics:** The potential for a "Trump-led" US-Iran rapprochement is

the dominant geopolitical variable. Reports suggest [Saudi Arabia has refused](#) to allow the use of its airspace for strikes against Iran, significantly limiting Israeli offensive options and forcing a reliance on diplomatic pressure or unilateral covert action.

**Food & Water Access:** Critical infrastructure in the Jordan Valley is being dismantled by settlement expansion. In Sahl al-Buqai'a, Israeli forces have [severed water networks](#) serving tomato and grape farms, threatening millions in agricultural investment and the "food basket" of the West Bank.

**Domestic Stability & Social Order:** The Palestinian Ministry of Women's Affairs launched the [National Observatory for Violence](#) against Women, a data-driven platform to track both occupation-related and social violence. This comes amid intense public debate over a horrific child murder case (Na'im al-Shami), which has highlighted gaps in [psychological support systems](#) and social safety nets.

## **LEGISLATIVE ROUNDUP**

---

Governance activity focused on institutional appointments and the regulation of religious and organizational affairs amidst the ongoing state of emergency. Significant attention was paid to the legal frameworks governing the upcoming Fatah leadership elections and Hajj pilgrimage logistics.

### **BILLS DISCUSSED/DEBATED:**

- **Temporary Constitution of Palestine:** Legal experts discussed the draft [temporary constitution](#) as a bridge from authority to statehood, emphasizing its role in aligning Palestinian law with international statehood requirements.

- **PMA Reconstitution Decree:** Presidential Decree of 2026 [formalized the board](#) of the Palestine Monetary Authority, including representatives from the Ministry of Finance.
- **Hajj Law No. 15 of 2025:** The Ministry of Awqaf clarified that [official Hajj routes](#) are the only legal means of pilgrimage, warning against "substitute Hajj" schemes and unofficial vendors.

## HEARINGS & PRESS EVENTS:

- **Fatah 8th Conference Briefing:** Director Munir Salameh confirmed the [May 14 opening](#) with 2,580 members participating across four arenas (Ramallah, Gaza, Cairo, Beirut) to ensure legitimacy despite geographical fragmentation.
- **Minister of Women's Affairs Presser:** Mona al-Khalili announced the launch of the [National Observatory](#) to document Israeli violations and domestic violence using a "heat map" of incidents.

## DEEP DIVE: TRENDS AND THEMES

---

**The Weaponization of Time:** A recurring theme across transcripts is the "race against time" by Israeli settlement interests. By initiating [massive agricultural and industrial projects](#) (like the Arraba cow farm and Shu'fa leveling), the Israeli right is attempting to create "irreversible facts" on the ground before the October Knesset elections. This "legal warfare" through land seizure is designed to render any future political settlement physically impossible.

**Public Health as a War Front:** In Gaza, the health crisis has shifted from surgical trauma to systemic biological risk. The [failure of 86%](#)

[of laboratory services](#) creates a "diagnostic blackout," where disease outbreaks can spread undetected. The deliberate [blockade of pest control](#) and cleaning materials, as highlighted by UNRWA, suggests that environmental decay is being used as a secondary lever of pressure against the displaced population.

**Regional Re-alignment & Hedging:** The US-Iran naval clashes appear to be tactical positioning ahead of a strategic deal. The [reported Saudi refusal](#) to support a US-led strike on Iran, combined with Trump's dismissal of Hormuz clashes as "minor," indicates a profound shift in US regional policy that favors containment over confrontation. This is causing a "hedging" behavior among Palestinian and regional actors who are unsure of the durability of US security guarantees.

## STRATEGIC FORESIGHT

---

**Short Term (1-4 Weeks):** Expect heightened friction in the Strait of Hormuz as Iran tests the limits of the ceasefire to gain leverage in nuclear negotiations. In the West Bank, the [Fatah 8th Conference](#) will likely trigger internal political competition, potentially leading to localized unrest or demonstrations as different factions vie for seats in the Central Committee and Revolutionary Council.

**Medium Term (1-6 Months):** The lead-up to the October Knesset elections will see an unprecedented spike in settlement construction and land seizures. The "Bustani Hefetz" industrial zone will likely [complete initial leveling](#), permanently altering the geography of Tulkarm. Gaza faces a mass mortality event among cancer and chronic

disease patients if diagnostic materials are not allowed entry immediately.

**Long Term (1-5 Years):** If the rumored US-Iran deal holds, Israel may pivot toward more aggressive unilateral operations in the "grey zone" to compensate for lost US backing. The Palestinian transition to statehood institutions, governed by the [new temporary constitution](#), will face a crisis of relevance if the physical territory for a state continues to be fragmented by the current infrastructure projects in the Jordan Valley.

## RECOMMENDATIONS & IMPLICATIONS

---

### For International Policy:

- The international community must prioritize the [restoration of diagnostic laboratory capacity](#) in Gaza; treating patients without diagnostics is a clinical impossibility that will lead to a surge in preventable deaths.
- Diplomatic pressure should target the [Shu'fa industrial project](#), as its completion will effectively end the geographic contiguity of the northern West Bank.
- Maritime security in the Strait of Hormuz remains the [global economic linchpin](#); any breakdown in the US-Iran ceasefire could trigger immediate shocks to global energy prices.

### For Private Sector/Investors:

- **Supply Chain Risk:** Agricultural investments in the Jordan Valley are at high risk of total loss due to [arbitrary water cut-offs](#) and road closures. Investors should diversify away from areas currently under Israeli "bypass road" construction.

- **Regulatory Compliance:** The launch of the [National Observatory](#) suggests a move toward stricter ESG and human rights reporting within Palestinian territories; firms should ensure their data is aligned with these new state monitoring tools.
- **Logistics Fragility:** The [checkpoint crisis at Jaba'](#) and Za'im demonstrates that logistics in the West Bank remain hostage to security fluctuations, making "just-in-time" delivery models non-viable for Palestinian businesses.

## ABOUT THIS REPORT

---

**Today's Media Trends** is a public interest experiment in applying deep thematic trend analysis to television news coverage from around the world to explore how responsibly applied advanced AI can help journalists and scholars better understand the overarching trends, themes and patterns of our global world.

**No data is used to train or tune any AI model.**

Each morning, in collaboration with the Internet Archive's TV News Archive, we apply Google's Gemini 3 to deeply examine yesterday's coverage from each television news channel to tease out the overarching themes and trends of its news coverage into a richly annotated thematic analysis. Each high-level insight is connected back to the original broadcast, allowing journalists and scholars to understand the dominate themes and trends and instantly click out to the underlying sources for details.

By helping journalists and scholars see the broader trends and patterns of global news coverage, this analysis helps them identify relevant stories and coverage they might not

otherwise have encountered and uncover connections, emphases and narrative shifts that enable more comprehensive reporting and deeper, evidence-based research.

This report is entirely machine generated using Gemini 3 and may include errors and omissions. Please verify all findings. No data is used to train or tune any AI model.

For questions or suggestions, please contact [kalev.leetaru5@gmail.com](mailto:kalev.leetaru5@gmail.com). You can also learn more about the GDEL Project at <https://blog.gdelproject.org/> and the Internet Archive's TV News Archive at <https://archive.org/details/tv>.