

TODAY'S MEDIA TRENDS

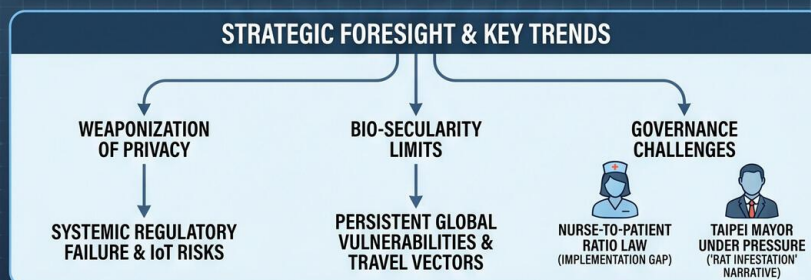
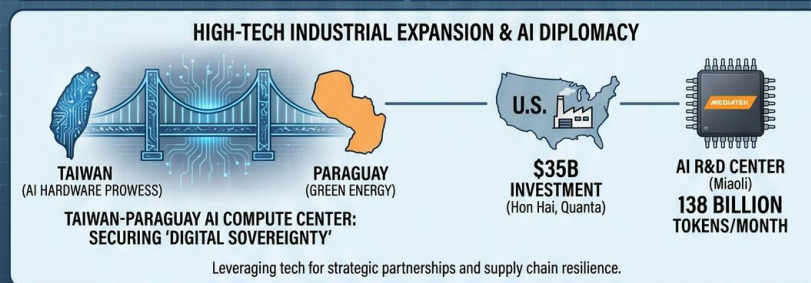
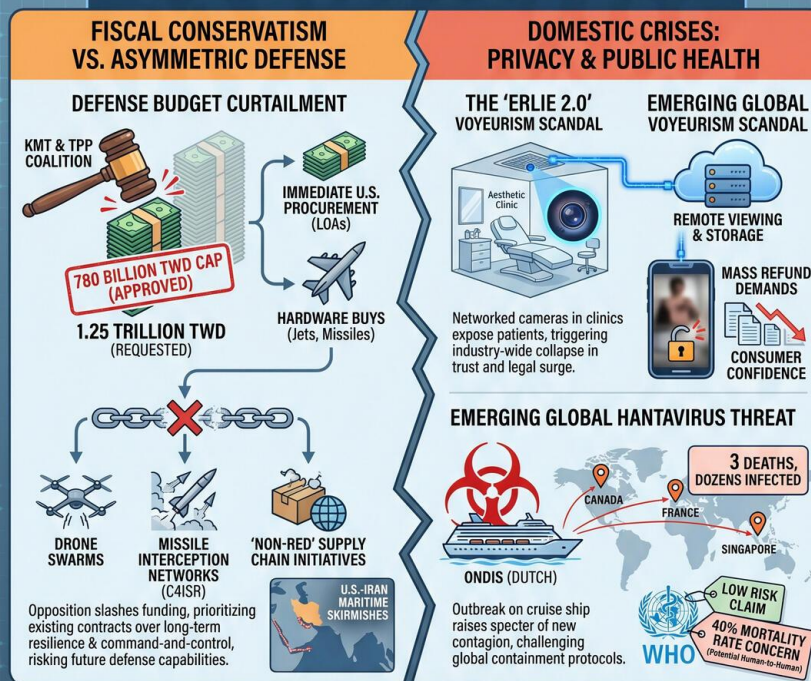
TTV

MAY 8, 2026

T H E G D E L T P R O J E C T

TAIWAN'S PIVOTAL JUNCTURE: DEFENSE CUTS, PRIVACY SCANDAL, & GLOBAL PANDEMIC THREAT

MAY 8, 2026: A DEFINING REALIGNMENT OF NATIONAL SECURITY & DOMESTIC REGULATORY LANDSCAPE



THE REPORT HIGHLIGHTS A FRAGILE BALANCE BETWEEN IMMEDIATE FISCAL RESTRAINT AND LONG-TERM SECURITY, WHILE DOMESTIC SCANDALS AND EXTERNAL HEALTH THREATS TEST GOVERNANCE RESILIENCE.

TODAY'S MEDIA TRENDS

TTV

MAY 8, 2026

TAIWAN FACES A PIVOTAL
JUNCTURE AS THE OPPOSITION
SLASHES DEFENSE SPENDING
AMIDST AN EXPANDING MEDICAL
PRIVACY SCANDAL AND A LOOMING
GLOBAL HANTAVIRUS THREAT.

DAY-AT-A-GLANCE

May 8, 2026, was defined by a significant realignment of Taiwan's national security and domestic regulatory landscape. The most consequential development was the legislative triumph of the "Blue-White" opposition coalition (KMT and TPP), which successfully [capped the defense budget](#) at 780 billion TWD, rejecting the administration's 1.25 trillion TWD request. This fiscal restraint occurs precisely as the U.S. and Iran engage in [renewed maritime skirmishes](#) and as Taiwan attempts to solidify high-tech "AI diplomacy" with partners like Paraguay. The budget cut poses an immediate risk to the development of the "Seven Major Defense Capabilities," particularly in drone swarms and missile interception networks, which the administration argues are essential for asymmetric warfare.

Simultaneously, a massive privacy breach in the aesthetic medicine sector, dubbed the "Erlie 2.0" scandal, has widened to include multiple clinics nationwide. Investigators discovered that clandestine cameras were [networked for remote viewing](#), allowing voyeuristic content to be uploaded and stored on cloud servers. This has triggered a collapse in consumer confidence and a wave of refund demands. In the public health sphere, concerns are mounting over an outbreak of a lethal Hantavirus strain aboard a Dutch cruise ship. Despite WHO claims that the risk remains low, the [virus has already caused three deaths](#) and has been detected in travelers returning to Singapore, France, and Canada, raising the specter of a new cross-border contagion.

MAJOR DEVELOPMENTS

1. National Defense Budget Curtailment

- The KMT and TPP coalition successfully passed a version of the National Defense Special Statute that provides [780 billion TWD](#) for military procurement, significantly lower than the executive branch's proposal.
- The budget prioritizes immediate U.S. procurement contracts for which "letters of offer and acceptance" (LOAs) have already been issued, while [stripping funding](#) for long-term command-and-control systems and "non-Red" supply chain initiatives.
- Military analysts warn that the 460-billion-TWD shortfall will [cripple missile interception](#) coverage over major urban centers and degrade inter-service communication efficiency.

2. The "Erlie 2.0" Voyeurism Scandal

- The investigation into the Erlie (Aierli) aesthetic medicine group has expanded, with police [searching 14 branches](#) of the Guangze clinic group for similar hidden surveillance devices.
- Technical analysis of seized cameras revealed that many were [equipped with IP addresses](#), facilitating real-time remote monitoring and unauthorized data exfiltration.
- The scandal has hit the industry hard, with clinics [facing mass refund requests](#) as legal experts warn victims against signing "rights waiver" documents during the refund process.

3. Emerging Global Hantavirus Threat

- The Dutch cruise ship "Ondis" (or Radis) has become the epicenter of a Hantavirus outbreak that [has killed three passengers](#) and infected dozens more.
- While the WHO maintains a "low risk" assessment, reports indicate [suspected cases in Singapore](#) and Canada among passengers who disembarked early, suggesting a failure in containment protocols.
- The virus is identified as a strain potentially capable of [human-to-human transmission](#), with a mortality rate cited as high as 40%.

4. High-Tech Industrial Expansion and AI Diplomacy

- MediaTek (MTK) officially inaugurated its [AI R&D center in Miaoli](#), showcasing advanced immersion cooling technology and a supercomputing platform capable of processing 138 billion tokens per month.

- Taiwan and Paraguay signed a [sovereign AI compute center](#) investment agreement, aiming to combine Taiwan's hardware prowess with Paraguay's surplus green energy.
- The Ministry of Economic Affairs announced that 20 Taiwanese companies, including Hon Hai (Foxconn) and Quanta, will [invest 35 billion USD](#) in the United States to build out AI server supply chains.

KEY GOVERNANCE TOPICS

AI and Digital Sovereignty

- The "Taiwan-Paraguay AI Compute Center" represents a [strategic use of technology](#) to bypass authoritarian expansion and secure democratic supply chains.
- MediaTek's new facility is designed to [achieve a PUE of 1.1](#), emphasizing energy efficiency as a core component of digital sovereignty.

Diplomatic Engagement and Geopolitics

- Secretary of State Marco Rubio's [visit to the Vatican](#) signaled a de-escalation of tensions between the Trump administration and the Holy See, focusing on human dignity and Middle East stability.
- Brazilian President Lula met with Trump at the White House, achieving [preliminary progress on tariff relief](#) and potentially acting as a mediator for U.S.-Cuba dialogue.
- Honduran President Castro indicated a [re-evaluation of ties with China](#), potentially opening a window for Taiwan to restore diplomatic or economic cooperation.

National Security and Lawfare

- The legislative battle over defense spending is being [framed by the opposition](#) as a victory for "oversight" against the administration's "blank check" requests.
- The reduction in defense funds is expected to [impact the "non-Red" supply chain](#) construction, potentially leaving Taiwan more dependent on standard international components.

Domestic Stability and Public Health

- Taipei Mayor Chiang Wan-an is facing political pressure over a ["rat infestation" at a major banquet hall](#), which the opposition is leveraging to question his governance capabilities.
- The passage of the Medical Act amendment [codifies the nurse-to-patient ratio](#), but faces a significant implementation gap of 3,000 to 5,000 personnel.

LEGISLATIVE ROUNDUP

The Legislative Yuan saw a day of high-stakes voting and intense emotional debate, primarily centered on national defense and healthcare standards. The session was marked by a rare consensus between the KMT and TPP to override the DPJ's spending plans, while healthcare advocates used dramatic protests to highlight staffing shortages.

BILLS DISCUSSED/DEBATED:

- **National Defense Special Statute (Amendment):** Passed a revised version capping procurement at [780 billion TWD](#). The bill specifically excludes long-term C4ISR upgrades in favor of immediate hardware buys.

- **Medical Act (Amendment):** Formally incorporated the [three-shift nurse-to-patient ratio](#) into law. However, a controversial provision reduced the mandatory nurse representation on the medical advisory committee from one-half to one-third.
- **Entertainment Tax Law (Amendment):** Completed its third reading, [authorizing local governments](#) to reduce or exempt taxes on movies and concerts to stimulate the cultural economy.
- **Child and Youth Sexual Exploitation Prevention Act:** Discussed in relation to [new AI age-detection systems](#) to be implemented by Meta (Instagram/Facebook) to protect minors from inappropriate content.

HEARINGS & PRESS EVENTS:

- **Joint KMT-TPP Press Conference:** Party leaders Eric Chu and Ko Wen-je (represented by Huang Kuo-chang) [defended the defense budget cut](#) as a responsible "check and balance" against administrative overreach.
- **Ministry of Health (MOHW) Briefing:** Minister Shi Chong-liang announced a [two-year grace period](#) for the new nursing ratios, setting a formal enforcement date of May 1, 2028.
- **Taipei City Government Clean-Up Launch:** Mayor Chiang Wan-an announced an [intensive 12-district pest control operation](#) starting in the Da'an district to combat rising rodent sightings.

DEEP DIVE: TRENDS AND THEMES

The Weaponization of Privacy and Surveillance

The "Erle 2.0" voyeurism scandal represents a new frontier in the intersection of technology and crime. Unlike traditional "peeping tom" cases, the use of [integrated IP-linked cameras](#) in medical settings suggests a sophisticated, perhaps organized, exploitation of sensitive spaces. The fact that the footage was [accessible via account logins](#) implies the potential for a "voyeurism-as-a-service" model. This trend points to a systemic failure in the regulatory oversight of the aesthetic medicine industry, which has expanded faster than the state's ability to ensure digital safety. It also raises questions about the "Internet of Things" (IoT) security in professional environments where privacy is paramount.

Fiscal Conservatism vs. Asymmetric Defense

Taiwan is witnessing a profound shift in its security architecture, driven by legislative fiscal conservatism. By slashing the [defense budget by over 35%](#), the opposition is essentially betting that hardware (missiles and jets) is more important than the "digital connective tissue" (command and control) of the military. This move directly [undermines the "resilience" strategy](#) favored by the administration and U.S. advisors, which focuses on decentralized, AI-driven warfare. The political narrative has shifted from "defending at all costs" to "defending within means," which may signal a weakening of the domestic consensus on the level of sacrifice required to maintain a credible deterrent.

Bio-Secularity and the Limits of Global Containment

The Ondis cruise ship Hantavirus outbreak highlights the persistent vulnerabilities in global biosurveillance. While the WHO attempts to prevent panic by [labeling the risk as low](#), the rapid appearance of cases in

[disparate geographic regions](#) (Singapore, Canada, France) suggests that modern air travel remains an efficient vector for pathogens with long incubation periods. The skeptical analyst must note that the "low risk" label often serves political or economic interests (such as protecting the tourism industry) rather than clinical reality. The 40% mortality rate mentioned in several reports places this strain on par with the most dangerous known pathogens, requiring a more aggressive international response than currently seen.

STRATEGIC FORESIGHT

Short Term (1-4 Weeks): Expect a surge in legal filings against the aesthetic medicine industry as more clinics are implicated in the voyeurism scandal. The [Consumer Protection Association](#) is likely to initiate a class-action lawsuit. In the public health sector, the return of passengers from the Ondis cruise ship will [trigger localized quarantine measures](#) in multiple countries, and any confirmed human-to-human transmission will cause immediate disruption to the global cruise industry.

Medium Term (1-6 Months): The 780-billion-TWD defense budget [will force a prioritization](#) of existing U.S. contracts, likely resulting in the cancellation or delay of domestic drone and electronic warfare programs. Politically, the "rat infestation" narrative in Taipei will [test Chiang Wan-an's resilience](#) ahead of the 2026 elections, potentially allowing a TPP or DPJ challenger to gain ground on a "competence" platform.

Long Term (1-5 Years): The Taiwan-Paraguay "AI Sovereignty" partnership [could serve as a blueprint](#) for a "Digital Third Way," where middle powers pool resources to compete with the U.S. and China. However,

the [chronic shortage of nursing staff](#) and the high cost of medical services will likely lead to a structural crisis in the healthcare system, potentially forcing a move toward more AI-automated patient monitoring.

RECOMMENDATIONS & IMPLICATIONS

For International Policy:

- **Strengthen Maritime Biosurveillance:** International maritime law should be updated to mandate [stricter "health-at-sea" protocols](#) and immediate data sharing with the WHO for cruise ship outbreaks.
- **Reassess Defense Resilience:** The U.S. and regional allies must [account for the funding gap](#) in Taiwan's command-and-control infrastructure when planning for joint contingencies.
- **Diplomatic Engagement:** Taiwan should aggressively pursue the [opening in Honduras](#) to restore diplomatic balance in Central America.

For Private Sector/Investors:

- **Aesthetic Medicine Cybersecurity:** Investors in the medical services sector should [audit facility privacy protocols](#) and cybersecurity measures to mitigate the risk of catastrophic brand damage from voyeurism scandals.
- **AI Infrastructure Opportunities:** The [massive 35-billion-USD investment](#) by Taiwanese tech giants in the U.S. creates significant opportunities for vendors in the AI server supply chain and green energy infrastructure.

- **Commodity Resilience:** With [gold ETFs seeing record inflows](#), investors should maintain hedges against geopolitical volatility, especially as tensions remain high in the Strait of Hormuz.

ABOUT THIS REPORT

Today's Media Trends is a public interest experiment in applying deep thematic trend analysis to television news coverage from around the world to explore how responsibly applied advanced AI can help journalists and scholars better understand the overarching trends, themes and patterns of our global world.

No data is used to train or tune any AI model.

Each morning, in collaboration with the Internet Archive's TV News Archive, we apply Google's Gemini 3 to deeply examine yesterday's coverage from each television news channel to tease out the overarching themes and trends of its news coverage into a richly annotated thematic analysis. Each high-level insight is connected back to the original broadcast, allowing journalists and scholars to understand the dominate themes and trends and instantly click out to the underlying sources for details.

By helping journalists and scholars see the broader trends and patterns of global news coverage, this analysis helps them identify relevant stories and coverage they might not otherwise have encountered and uncover connections, emphases and narrative shifts that enable more comprehensive reporting and deeper, evidence-based research.

This report is entirely machine generated using Gemini 3 and may include errors and

omissions. Please verify all findings. No data is used to train or tune any AI model.

For questions or suggestions, please contact kalev.leetaru5@gmail.com. You can also learn

more about the GDELТ Project at <https://blog.gdelтproject.org/> and the Internet Archive's TV News Archive at <https://archive.org/details/tv>.