

# TODAY'S MEDIA TRENDS

## TV3

MAY 8, 2026

T H E G D E L T P R O J E C T



### GLOBAL BIOSECURITY & DOMESTIC CRISIS:

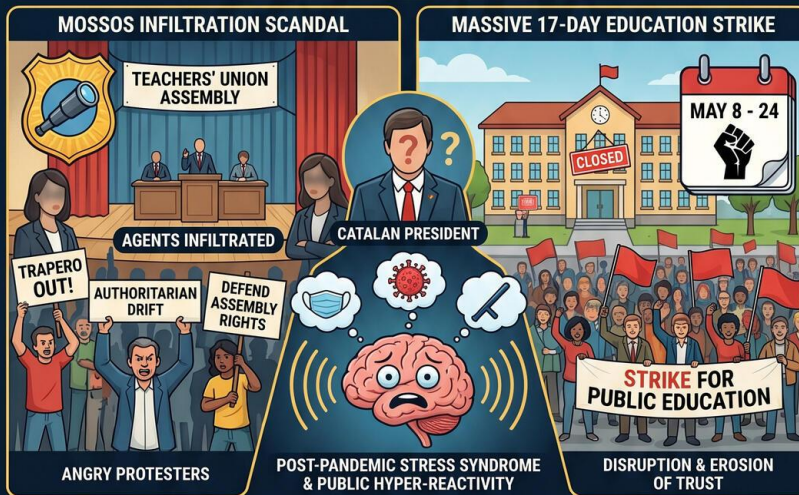
The Hantavirus Test & Spain's Political Stress (May 8, 2026)



#### THE ONDIUS HANTAVIRUS CRISIS



#### SPAIN'S INTERNAL TURMOIL



#### KEY TRENDS & FUTURE IMPLICATIONS

<h5>GEOPOLITICAL REALIGNMENT &amp; "MORAL POPE"</h5> <p>COUNTERWEIGHT TO POWER</p> <p>POPE LEO XIV</p> <p>DONALD TRUMP</p> <p>DRUGS &amp; CRIME</p> <p>LULA DA SILVA</p> <p>UK PM KEIR STARMER</p> <p>UK POLITICAL FRAGMENTATION</p>	<h5>ECONOMIC &amp; TECH TRADE-OFFS</h5> <p>CRUISE INDUSTRY RISK (HIGH BIO-COSTS)</p> <p>AGRIVOLTAICS (YIELD vs. PROTECTION)</p>	<h5>STRATEGIC FORESIGHT &amp; RECOMMENDATIONS</h5> <p><b>SHORT TERM:</b> EVACUATION RISKS, POLICE CHIEF DISMISSAL</p> <p><b>MEDIUM TERM:</b> TIGHTER BIO-PROTOCOLS, UK REFORM</p> <p><b>LONG TERM:</b> TRUST DEFICIT, NEW WHO MANDATES?</p> <p><b>INTERNATIONAL POLICY</b> (FLAG-STATE PROTOCOLS)</p> <p><b>PRIVATE SECTOR</b> (PRICE IN BIO-RISK)</p> <p><b>SECURITY AGENCIES</b> (ETHICAL BOUNDARIES)</p>
--	---	---

# TODAY'S MEDIA TRENDS

## TV3

MAY 8, 2026

---

GLOBAL BIOSECURITY PROTOCOLS  
FACE A CRITICAL TEST AS SPAIN  
COORDINATES A COMPLEX  
HANTAVIRUS EVACUATION AMID  
DOMESTIC POLITICAL CRISES AND  
ESCALATING LABOR TENSIONS.

### DAY-AT-A-GLANCE

---

The landscape on May 8, 2026, is dominated by the unfolding crisis of the cruise ship **Ondius**, currently navigating toward the Canary Islands with a confirmed outbreak of a lethal Hantavirus strain. The situation has transitioned from a localized maritime health incident into a massive logistical and diplomatic challenge involving 23 nations and the World Health Organization (WHO). While health officials stress that the "Andean strain" identified [has caused eight cases](#), including three fatalities, they are simultaneously forced to manage public anxiety rooted in the traumatic memory of the COVID-19 pandemic. The operation to evacuate and repatriate hundreds of passengers via the secondary port of Granadilla is designed to bypass the local population entirely, reflecting the extreme political sensitivity of infectious disease management in 2026.

Simultaneously, the Catalan government is embroiled in a significant domestic stability crisis following the admission that **Mossos d'Esquadra** agents were [infiltrated into a teachers' union](#) assembly. This revelation has unified opposition forces from across the spectrum—including ERC, CUP, and Comuns—in a demand for the immediate dismissal of Police Director Josep Lluís Trapero. The scandal emerges at a precarious moment for the PSC-led executive, as it coincides with the onset of a massive 17-day education strike. These converging events highlight a growing friction between state security apparatuses and civil liberties, exacerbated by a post-pandemic "stress syndrome" that makes the public hyper-reactive to both health threats and perceived authoritarianism.

### MAJOR DEVELOPMENTS

---

#### • The Ondius Hantavirus Crisis

- The WHO has confirmed [five confirmed and three suspected](#) cases of Hantavirus aboard the Ondius, with the "patient zero" linked to an ornitological trip in South America.
- A 42-day quarantine period—the maximum incubation window—has been [mandated for Spanish passengers](#) who will be held at the Gómez Ulla military hospital in Madrid.
- Logistical protocols involve a "no-docking" strategy where [passengers will be ferried](#) via tenders in groups of five to minimize contact with Canary Islands residents.

- **Mossos d'Esquadra Infiltration Scandal**

- The Directorate General of the Mossos acknowledged [infiltrating two female agents](#) into a teachers' union assembly at the Pau Claris Institute.
- Opposition parties have characterized this as an "authoritarian drift" and a [violation of the constitutional right](#) to assembly and union organization.
- Catalan President Salvador Illa has denied prior knowledge of the operation while maintaining confidence in the police force, creating a potential rift within the governing coalition.

- **UK Political Realignment**

- Prime Minister Keir Starmer is facing a [refusal to resign](#) following a "electoral debacle" in local elections, where the populist Reform UK party emerged as a major victor.
- Nigel Farage has proclaimed a shift in British politics, claiming his party can [win in traditional Labor areas](#), signaling a deeper collapse of the two-party system.

## **KEY GOVERNANCE TOPICS**

---

### **Biosurveillance & Public Health Policy**

- The Hantavirus outbreak is testing the **Andean strain's** capacity for human-to-human transmission, which is [historically rare but highly lethal](#) with mortality rates near 50% if untreated.

- Tension between the Spanish Ministry of Health and the Ministry of Defense regarding **mandatory vs. voluntary quarantine** has exposed gaps in the legal framework for non-pandemic outbreaks. Minister Mónica García maintains that [legal tools exist to enforce](#) isolation if necessary.

### **Domestic Stability & Social Order**

- The 17-day teacher strike in Catalonia [represents a severe disruption](#) to state capacity at the end of the academic year, compounded by the loss of trust following the police infiltration.
- Port workers in Tenerife have [threatened to block the Ondius](#) evacuation, demonstrating how irrational fear can undermine state-led health protocols.

### **Geopolitical Power Dynamics**

- Donald Trump's [meeting with Brazilian President Lula da Silva](#) signals a realignment of interests in the Americas, particularly regarding "organized crime and drugs," despite past frictions.
- Pope Leo XIV is emerging as a [geopolitical counterweight to Trump](#), specifically opposing the expansion of nuclear armaments and restrictive migration policies.

### **Economic Security & Technology Policy**

- ECB President Christine Lagarde is advocating for deeper **cooperation with Latin American central banks** and a robust framework for [managing cryptocurrencies](#) during a summit in Tarragona.

- Innovations in "agrivoltaics" in Mollerussa, where solar panels are placed over fruit trees, show a [25% drop in production](#) but offer critical protection against extreme weather, highlighting the trade-offs in the energy transition.

## LEGISLATIVE ROUNDUP

---

Governance discourse focused on the limits of police surveillance laws and the invocation of the 1986 Organic Law on Special Measures in Public Health. The Catalan Parliament is preparing for a **forced appearance of Counselor Núria Parlón** to explain police directives.

### BILLS DISCUSSED/DEBATED:

- **Organic Law 3/1986 (Public Health):** Invoked by the Ministry of Health to justify [potential mandatory quarantines](#) for the Ondius passengers, though requiring judicial ratification for enforcement.
- **Police Surveillance Protocols:** Debate over whether the "Right of Assembly" was [violated by Mossos infiltration](#) in the absence of a suspected "imminent crime."

### HEARINGS & PRESS EVENTS:

- **Mónica García Congressional Appearance:** The Health Minister has expressed willingness to [testify before Congress](#) regarding the Hantavirus crisis management following PP demands.
- **Union Press Conference:** Teachers' unions held a joint briefing [denouncing the "authoritarian drift"](#) of the PSC government and calling for the dismissal of the police chief.

## DEEP DIVE: TRENDS AND THEMES

---

### The Ghost of COVID-19 and Biosocial Hyper-Reactivity

A recurring theme is the "post-traumatic stress syndrome" from the 2020 pandemic. Experts note that while Hantavirus is [not a respiratory aerosol-based virus](#) like SARS-CoV-2, the public and political reaction remains calibrated for a COVID-style catastrophe. This leads to extreme measures, such as the [42-day quarantine](#) (nearly triple the standard COVID window), and the "no-docking" policy in Tenerife. The government is struggling to balance "scientific rigor" with "social calm," as the irrationality of fear begins to drive policy decisions, such as using military hospitals for asymptomatic individuals.

### Erosion of Trust in Catalan Security Institutions

The Trapero infiltration scandal signifies a collapse of the "normalization" narrative pursued by the current Catalan administration. By [infiltrating a labor assembly](#), the Mossos have inadvertently provided the opposition with a potent "repression" narrative that bridges the gap between the independence movement and labor unions. This suggests a strategic failure in intelligence gathering that prioritizes tactical information (strike plans) over the strategic necessity of maintaining institutional legitimacy.

### The Rise of the "Moral Pope" in a Secular Geopolitics

Pope Leo XIV's upcoming visit to Barcelona is being framed as a major cultural and political event, transcending religious boundaries. His

[willingness to confront Donald Trump](#) on nuclear weapons and human rights has made him a rallying point for agnostics and progressives. This "ritme apostòlic" is filling a moral vacuum in international relations, where traditional secular leaders are perceived as being in retreat or compromised by populist domestic pressures.

## **STRATEGIC FORESIGHT**

---

### **Short Term (1-4 Weeks):**

- The **Ondius evacuation** will likely proceed without a major outbreak on land, but any single positive case during the 42-day quarantine will trigger a renewed "lockdown" panic in the media.
- Josep Lluís Trapero faces a [high probability of dismissal](#) or resignation as the PSC seeks to appease its coalition partners and avoid a total collapse of labor negotiations.

### **Medium Term (1-6 Months):**

- The **reform of the UK's electoral map** will accelerate as Starmer's Labor party pivots toward more populist economic policies to combat the Reform UK surge.
- Biosurveillance protocols for the cruise industry will be [permanently tightened](#), possibly requiring real-time health data sharing between ships and national ports, increasing operational costs for the sector.

### **Long Term (1-5 Years):**

- The "Andean strain" investigation in South America [could become a flashpoint](#) for international criticism of the Milei administration's budget cuts to scientific research, potentially leading to new WHO-led health funding mandates for developing nations.

- A permanent shift in the Catholic Church's role as a **primary diplomatic mediator** in conflicts involving nuclear-armed states, as evidenced by Leo XIV's current trajectory.

## **RECOMMENDATIONS & IMPLICATIONS**

---

### **For International Policy:**

- Governments should formalize the **"Netherlands-style" flag-state responsibility** protocol for maritime health crises [to prevent diplomatic gridlock](#) when third-country nationals are stranded on cruise ships.
- Increased monitoring of Hantavirus reservoirs (rodents) in South American birdwatching corridors is essential to prevent future "spillover" events into global tourism networks.
- European security agencies must establish clearer **ethical boundaries for undercover operations** in union settings to avoid the "Catalan scenario" of total labor-government breakdown.

### **For Private Sector/Investors:**

- **Cruise Industry Risk:** Investors should price in the [extreme logistical costs](#) of "no-dock" health evacuations, which may become the new standard for exotic viral outbreaks.
- **Renewable Energy Trade-offs:** The agrivoltaic sector [faces a 25% yield risk](#) that must be subsidized or offset by carbon credits to remain viable for farmers.
- **Education Sector Stability:** Continued labor unrest in Spain suggests a [volatile environment for private education](#) and auxiliary service providers as the 17-day strike trend potentially spreads.

## ABOUT THIS REPORT

---

**Today's Media Trends** is a public interest experiment in applying deep thematic trend analysis to television news coverage from around the world to explore how responsibly applied advanced AI can help journalists and scholars better understand the overarching trends, themes and patterns of our global world.

**No data is used to train or tune any AI model.**

Each morning, in collaboration with the Internet Archive's TV News Archive, we apply Google's Gemini 3 to deeply examine yesterday's coverage from each television news channel to tease out the overarching themes and trends of its news coverage into a richly annotated thematic analysis. Each high-level insight is connected back to the original broadcast, allowing journalists and scholars to understand the dominate themes and trends

and instantly click out to the underlying sources for details.

By helping journalists and scholars see the broader trends and patterns of global news coverage, this analysis helps them identify relevant stories and coverage they might not otherwise have encountered and uncover connections, emphases and narrative shifts that enable more comprehensive reporting and deeper, evidence-based research.

This report is entirely machine generated using Gemini 3 and may include errors and omissions. Please verify all findings. No data is used to train or tune any AI model.

For questions or suggestions, please contact [kalev.leetaru5@gmail.com](mailto:kalev.leetaru5@gmail.com). You can also learn more about the GDEL T Project at <https://blog.gdel tproject.org/> and the Internet Archive's TV News Archive at <https://archive.org/details/tv>.