

# TODAY'S MEDIA TRENDS

## KSTS

MAY 9, 2026

THE GDELT PROJECT

### GEOPOLITICAL & DOMESTIC INSTABILITY REPORT: MEXICAN DIPLOMATIC AUDIT, LETHAL HANTAVIRUS OUTBREAK, SYSTEMIC CYBERATTACK

#### DAY-AT-A-GLANCE

##### US-MEXICO TENSIONS:



State Dept. audits all 53 Mexican consulates for "America First" alignment amid interference claims. Sheinbaum denies, citing citizen protection.

##### GLOBAL HEALTH EMERGENCY:



MV Hondius cruise Hantavirus outbreak (3 dead). CDC Level 3 response, tracking passengers across 12 countries.

##### CYBERSECURITY CRISIS:



"Shiny Hunters" hack Canvas platform, breaching 90 institutions during final exams, highlighting ed-tech vulnerability.

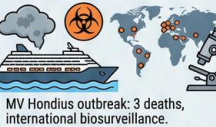
#### MAJOR DEVELOPMENTS & CRISIS VECTORS

##### GEOPOLITICAL & DIPLOMATIC ESCALATION (AUDIT & PRESSURE)



- State Dept. reviews 53 Mexican consulates for policy alignment (diplomatic review).
- Accusations of political interference & migration fostering.
- President Sheinbaum denies, emphasizes essential consular services.

##### PUBLIC HEALTH EMERGENCY (HANTAVIRUS OUTBREAK)



- MV Hondius outbreak: 3 deaths, international biosurveillance.
- CDC Level 3 response, monitoring passengers in CA, TX, GA, NJ.
- Contagion likely from rodent-infested ecotourism site in Argentina.

##### CYBERSECURITY (EDUCATIONAL INFRASTRUCTURE ATTACK)



- "Shiny Hunters" breached Canvas, compromising data of 90 institutions.
- Student names, IDs, communications stolen; ransom threats.
- Attack during final exams, forcing exam extensions.

##### REGIONAL SECURITY INCIDENTS (NORTHERN CALIFORNIA)



- Santa Clara: Shooting, fire, SWAT standoff.
- Oakland: Two officers injured, suspect shot during stop.
- SF Mission Education Center "Newcomer" program to close.

#### KEY GOVERNANCE TOPICS (THEMATIC ANALYSIS)

##### DIPLOMATIC ENGAGEMENT



Potential consulate closures shift norms, restrict legal access for millions. Used for border security pressure.

##### BIOSURVEILLANCE & PUBLIC HEALTH



Localized threats become global via travel. High international alert, lower domestic risk than past pandemics.

##### CYBERSECURITY & DATA SOVEREIGNTY



Centralized platforms are risky. Breaches highlight need for encryption and MFA in managing academic records.

##### LABOR & INDUSTRY



Structural labor crisis: Male workforce decline (1 in 3 not working/seeking), due to retirement, education, health.

##### GEOPOLITICAL POWER DYNAMICS



US-Iran conflict affects energy prices. Pentagon releases 400+ UAP reports for transparency.

#### LEGISLATIVE ROUNDUP & HEARINGS (ACTIONS & EVENTS)



- Governance via administrative audits, not new laws.
- State Dept. confirms consulate audit for "US interests".
- Sheinbaum press conference denies interference.
- Oakland Police Chief on officer wounding/suspect shooting.
- Federal judge blocks VA redistricting challenge.

#### DEEP DIVE: TRENDS & THEMES



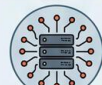
##### DIPLOMATIC LAWFARE

Audits as diplomatic pressure, redefining immunity boundaries.



##### PATHOGEN GLOBALIZATION

Zoonotic risks via ecotourism, highlighting global health fragility.



##### VULNERABILITY OF CENTRALIZED PLATFORMS

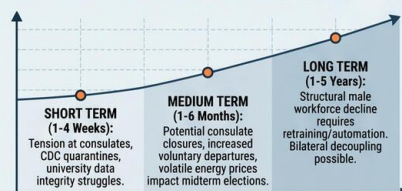
Single point of failure risk, institutions are primary financial targets.



##### SHIFTING ECONOMIC SENTIMENTS

Consumers shift to fuel-efficient/EVs due to energy price volatility.

#### STRATEGIC FORESIGHT & RECOMMENDATIONS (FUTURE OUTLOOK)



##### FOR INTERNATIONAL POLICY

- Clear protocols to prevent audit intimidation.
- Strengthen biosurveillance for cruise/ecotourism.
- Develop bilateral agreements to de-escalate tensions.



##### FOR PRIVATE SECTOR/INVESTORS

- Invest in decentralized ed-tech, redundant systems.
- Monitor vehicle markets for energy shifts.
- Prepare for labor shortages if consular support is reduced.

# TODAY'S MEDIA TRENDS

KSTS

MAY 9, 2026

---

AUDIT OF MEXICAN DIPLOMATIC MISSIONS, A LETHAL HANTAVIRUS OUTBREAK, AND A SYSTEMIC CYBERATTACK ON EDUCATIONAL INFRASTRUCTURE SIGNAL HEIGHTENED GEOPOLITICAL AND DOMESTIC INSTABILITY.

## DAY-AT-A-GLANCE

---

The reporting on May 9, 2026, highlights a period of intense friction between the United States and Mexico, driven by the Trump administration's "America First" policy. The State Department has initiated a comprehensive audit of all 53 Mexican consulates in the U.S. to determine if their activities align with administration priorities or constitute political interference. This development comes amid broader bilateral tensions involving the deaths of intelligence agents in Chihuahua and demands for the extradition of high-level Mexican officials. The Mexican government, led by President Claudia Sheinbaum, has categorically denied allegations of political meddling, framing the consulate network as a vital protective infrastructure for its citizens abroad [defending Mexicans](#).

Simultaneously, an international public health emergency is unfolding following a Hantavirus outbreak aboard the cruise ship MV Hondius. The virus has claimed at least three lives, triggering a Level 3 response from the Centers for Disease Control and Prevention (CDC). Biosurveillance efforts are currently tracking passengers across four continents and 12 countries, with the U.S. government deploying specialized aircraft to repatriate and quarantine American citizens. Domestically, the "Shiny Hunters" hacker group has disrupted educational infrastructure by attacking the Canvas platform, affecting 90 institutions globally during final examination periods, highlighting vulnerabilities in [educational data security](#).

Economic indicators remain mixed; while the U.S. economy added 115,000 jobs in April, structural labor issues persist, notably a long-term decline in male workforce participation, with one in three men currently neither working nor seeking employment. Regional stability in Northern California is further challenged by a spate of violent incidents, including a high-profile shooting and fire in Santa Clara and an officer-involved shooting in Oakland. These events collectively suggest a tightening of state control over diplomatic and migratory channels, alongside emerging threats from biological and digital vectors.

## MAJOR DEVELOPMENTS

---

### Geopolitical and Diplomatic Escalation

- The U.S. State Department is reviewing the operations of 53 Mexican consulates to ensure alignment with "America First" foreign policy [diplomatic review](#).

- The audit follows accusations from conservative sectors that the consulates are interfering in internal U.S. politics and fostering mass migration [political interference allegations](#).
- President Sheinbaum has denied that consulates engage in politics, emphasizing their role in providing essential documentation like passports and [consular ID cards](#).

### **Public Health Emergency: Hantavirus Outbreak**

- A Hantavirus outbreak on the MV Hondius has resulted in three deaths and an international biosurveillance effort [lethal outbreak](#).
- The CDC has activated a Level 3 emergency response, monitoring passengers in states including California, Texas, Georgia, and [New Jersey](#).
- Authorities believe the contagion originated from bird-watching activities near a rodent-infested landfill in [Argentina](#).

### **Cybersecurity: Educational Infrastructure Attack**

- The hacker group "Shiny Hunters" breached the Canvas educational platform, compromising the data of 90 institutions [data breach](#).
- Compromised information includes student names, ID numbers, and internal communications, with hackers threatening to [leak data](#) if ransoms are not paid.
- The attack occurred during final exams, forcing universities to offer [submission extensions](#) to thousands of students.

### **Regional Security Incidents (Northern California)**

- A shooting and subsequent house fire in Santa Clara resulted in one death and a multi-agency SWAT standoff [crime scene connection](#).
- In Oakland, two police officers were injured after being dragged by a suspect's vehicle during a traffic stop, leading to the [shooting of the suspect](#).
- The "Newcomer" program at San Francisco's Mission Education Center, which assists migrant students in learning English, is [set to close](#).

### **KEY GOVERNANCE TOPICS**

---

**International Relations & Diplomatic Engagement** The potential closure of Mexican consulates represents a significant shift in diplomatic norms. The Trump administration is using the State Department to pressure the Mexican government over border security and organized crime, specifically following the [deaths of two CIA agents](#) in Chihuahua. This audit could severely restrict the ability of millions of Mexican nationals to access legal and [protective services](#).

**Biosurveillance & Public Health** The Hantavirus outbreak demonstrates the speed at which localized biological threats can become global via the travel industry. The CDC's coordination with 11 other countries to track [potentially infected passengers](#) indicates a high level of international alert, though the domestic risk is currently characterized as [relatively low](#) compared to previous pandemics.

**Cybersecurity & Data Sovereignty** The "Shiny Hunters" attack on Canvas illustrates

the risk of centralized educational technology. The breach of student data at [San Jose State and UC Berkeley](#) highlights the need for robust encryption and multi-factor authentication in platforms managing the [academic records](#) of millions.

**Labor & Industry** Despite a positive jobs report of 115,000 new positions, the labor market faces a structural crisis with the [disappearance of men](#) from the workforce. One-third of men are neither working nor looking for work, attributed to retirement of baby boomers, educational abandonment, and [health issues](#).

**Geopolitical Power Dynamics** Energy security is being impacted by a reported conflict between the U.S. and Iran, which has driven gas prices higher and influenced a [surge in electric vehicle sales](#). Simultaneously, the Pentagon has begun releasing files on [unidentified anomalous phenomena \(UAP\)](#) to increase transparency, revealing over 400 reports of world-wide sightings.

## LEGISLATIVE ROUNDUP

---

Governance today is characterized by administrative audits and the implementation of restrictive immigration measures rather than new legislative floor votes. Policy shifts are being driven by the executive branch's interpretation of "America First" objectives.

## HEARINGS & PRESS EVENTS

- The U.S. State Department confirmed the audit of [53 Mexican consulates](#), citing the need to promote U.S. interests.
- President Claudia Sheinbaum held a press conference denying allegations of consulate-led [political interference](#).

- The Oakland Police Chief addressed the media regarding the wounding of two officers and the [shooting of a suspect](#) involved in human trafficking investigations.
- A federal judge in Virginia [blocked a Democratic attempt](#) to redraw electoral maps, maintaining a redistricting plan favorable to Republicans for the next 14 years.

## DEEP DIVE: TRENDS AND THEMES

---

**Diplomatic Lawfare** The use of administrative audits to threaten the closure of consulates is a form of diplomatic pressure designed to force the Mexican state into compliance on border issues. By framing consular assistance as "political interference," the U.S. administration is redefining the [boundaries of diplomatic immunity](#) and sovereign representation within its borders.

**Pathogen Globalization** The MV Hondius incident highlights the persistent risk of zoonotic diseases jumping to human populations through specialized ecotourism. The tracking of passengers across 12 countries underscores the fragility of global health when faced with a [pathogen with a long incubation period](#) and high lethality rate.

**The Vulnerability of Centralized Platforms** The Canvas attack demonstrates that educational institutions are now primary targets for financial extortion via cybercrime. The reliance on a single platform for [90 major institutions](#) creates a single point of failure that can paralyze the academic output of an entire cohort of students.

**Shifting Economic Sentiments** Consumers are responding to the U.S.-Iran conflict and

high gas prices by seeking [economic alternatives](#). This has resulted in the first drop in used car prices in months, as demand shifts toward [more fuel-efficient or electric vehicles](#) to mitigate energy costs.

## STRATEGIC FORESIGHT

---

**Short Term (1-4 Weeks):** Expect heightened tension at Mexican consulates as the audit proceeds, potentially leading to reduced service hours or localized protests. The CDC will likely finalize the quarantine of the [17 American cruise passengers](#) in Nebraska. Universities will struggle to restore full data integrity to the Canvas platform before the conclusion of the spring semester.

**Medium Term (1-6 Months):** If the consulate audit results in closures, millions of Mexican nationals may lose access to documents required for work and travel, potentially increasing the [rate of voluntary departures](#) (self-deportations), which are already at record highs. The U.S.-Iran conflict will likely keep [energy prices volatile](#), influencing the upcoming 2026 midterm elections.

**Long Term (1-5 Years):** The structural decline in male workforce participation will necessitate either massive investment in vocational retraining or a reliance on automation. Bilateral relations with Mexico may undergo a fundamental decoupling if diplomatic missions are permanently reduced, leading to a [security-first approach](#) that overrides traditional economic cooperation.

## RECOMMENDATIONS & IMPLICATIONS

---

### For International Policy

- Establish clear protocols for consular activities to prevent administrative audits from becoming tools for [diplomatic intimidation](#).
- Strengthen international biosurveillance networks specifically for the cruise and ecotourism industries to prevent [cross-border pathogen transmission](#).
- Develop bilateral agreements on extradition and intelligence sharing to de-escalate tensions arising from the deaths of [foreign agents](#).

### For Private Sector/Investors

- Invest in decentralized educational technology and redundant data systems to mitigate the impact of [platform-wide cyberattacks](#).
- Monitor the used vehicle and EV markets for shifts driven by [energy price volatility](#) and geopolitical conflicts.
- Prepare for potential labor shortages in sectors reliant on Mexican national labor if [consular support](#) is withdrawn or reduced.

## ABOUT THIS REPORT

---

**Today's Media Trends** is a public interest experiment in applying deep thematic trend analysis to television news coverage from around the world to explore how responsibly applied advanced AI can help journalists and scholars better understand the overarching trends, themes and patterns of our global world.

**No data is used to train or tune any AI model.**

Each morning, in collaboration with the Internet Archive's TV News Archive, we apply Google's Gemini 3 to deeply examine yesterday's coverage from each television news channel to tease out the overarching themes and trends of its news coverage into a richly annotated thematic analysis. Each high-level insight is connected back to the original broadcast, allowing journalists and scholars to understand the dominate themes and trends and instantly click out to the underlying sources for details.

By helping journalists and scholars see the broader trends and patterns of global news

coverage, this analysis helps them identify relevant stories and coverage they might not otherwise have encountered and uncover connections, emphases and narrative shifts that enable more comprehensive reporting and deeper, evidence-based research.

This report is entirely machine generated using Gemini 3 and may include errors and omissions. Please verify all findings. No data is used to train or tune any AI model.

For questions or suggestions, please contact [kalev.leetaru5@gmail.com](mailto:kalev.leetaru5@gmail.com). You can also learn more about the GDEL Project at <https://blog.gdelproject.org/> and the Internet Archive's TV News Archive at <https://archive.org/details/tv>.