

TODAY'S MEDIA TRENDS

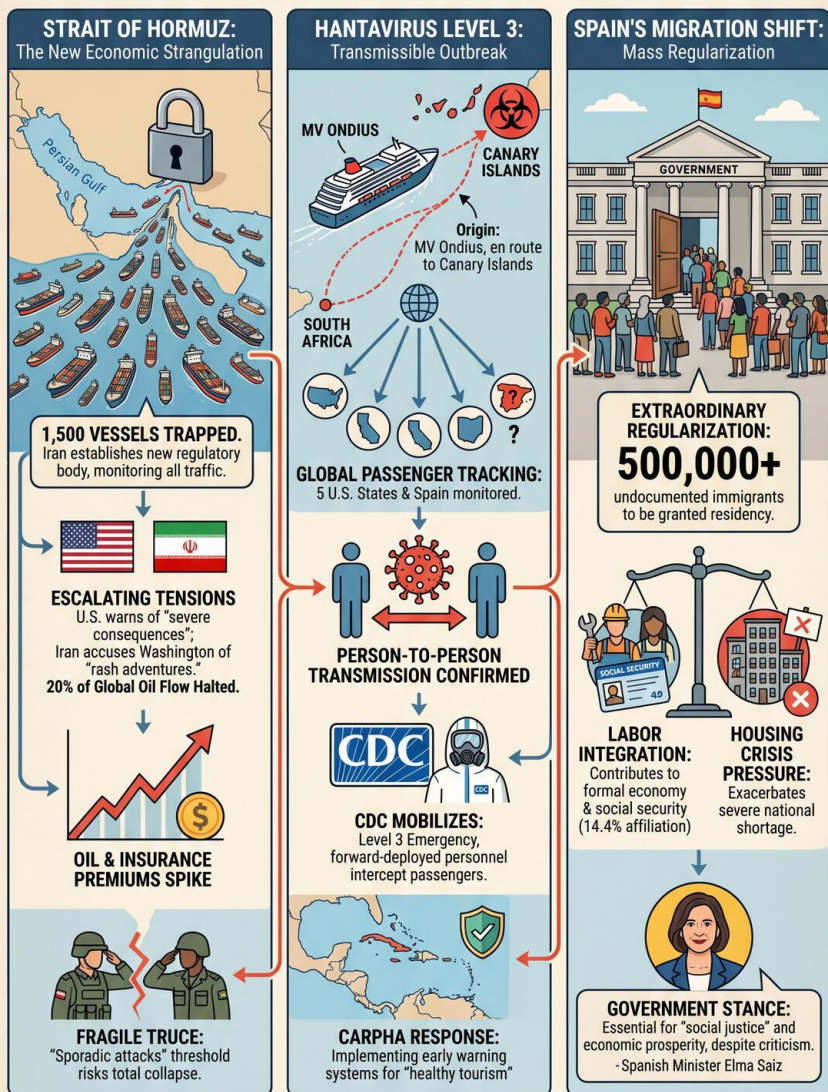
TELEARUBA

MAY 9, 2026

THE G D E L T P R O J E C T

GLOBAL CRISIS CONVERGENCE: Hormuz Blockade, Hantavirus & Migration Shifts – May 9, 2026.

A Triple Threat to Stability: Maritime Security, Public Health, and Socio-Political Reform



DEEP DIVE: TRENDS

- Institutionalized Asymmetric Maritime Warfare
- Evolution of Biosurveillance Standards (Person-to-Person)
- Demographic Engineering vs. Infrastructure Limits

STRATEGIC FORESIGHT

- Short Term:** Global economic contagion, expanded quarantines
- Medium Term:** Labor market transformation, "green-zone" tourism
- Long Term:** Hormuz bypass, permanent housing-driven labor shortages

RECOMMENDATIONS

- International:** De-escalate Hormuz, standardize health protocols
- Private Sector:** Diversify supply chains, invest in CARPHA standards
- Policy:** Monitor Spanish model for demographic management

TODAY'S MEDIA TRENDS

TELEARUBA

MAY 9, 2026

GLOBAL SHIPPING CRISIS IN HORMUZ COINCIDES WITH TRANSMISSIBLE HANTAVIRUS OUTBREAK AND RADICAL IMMIGRATION REFORMS

DAY-AT-A-GLANCE

On May 9, 2026, global stability is increasingly threatened by a dual crisis of maritime security and public health. In the Strait of Hormuz, a massive blockade has [trapped approximately 1,500 vessels](#) as tensions between Iran and the United States escalate. Iran has established a new regulatory body to monitor and record all traffic in this critical corridor, through which 20% of global oil previously flowed. While both sides claim to be acting within the threshold of a fragile truce, the rhetoric has sharpened, with the U.S. warning of "severe consequences" if a pact is not signed, and Iran accusing Washington of "rash adventures." This economic strangulation coincides with continued skirmishes between Israel and Hezbollah, further destabilizing the region ahead of high-level negotiations scheduled for next week.

Simultaneously, a significant biosurveillance emergency has been declared as the U.S. CDC responds to a [Level 3 Hantavirus emergency](#) involving a high-risk strain capable of person-to-person transmission. The outbreak, linked to the cruise ship *MV Ondius* currently en route to the Canary Islands, has already prompted the tracking of passengers across five U.S. states and a suspected secondary infection in Spain. These events are unfolding alongside a major socio-political shift in Spain, where the government is initiating an extraordinary regularization process for over [500,000 undocumented immigrants](#). This policy seeks to integrate labor into the formal economy despite a domestic housing crisis, highlighting a desperate push for "social justice" and economic contribution from a migrant population that already accounts for 14.4% of social security affiliations.

MAJOR DEVELOPMENTS

- **Strait of Hormuz Blockade:** Iran has deployed a new oversight body to control and record maritime traffic, effectively institutionalizing a blockade that has [halted 1,500 ships](#) in the region.
- **Transmissible Hantavirus Outbreak:** The CDC has confirmed a strain of Hantavirus with [person-to-person transmission capabilities](#), leading to a Level 3 emergency and international tracking of passengers from the *MV Ondius*.
- **Mass Spanish Immigration Regularization:** Minister Elma Saiz defended the government's plan to grant residency to [half a million migrants](#), countering criticism that the move would exacerbate the national housing shortage.

- **Aruba Housing and Infrastructure Crisis:** Domestic authorities in Aruba report a severe shortage, with 4,000 citizens in [urgent need of housing](#) while current construction capacity is limited to only 400 units annually.
- **Caribbean Health-Tourism Integration:** The Caribbean Public Health Agency (CARPHA) is implementing [early warning systems](#) to detect visitor illnesses before they escalate, aiming to brand the region as a "healthier, safer" destination.

KEY GOVERNANCE TOPICS

Biosurveillance and Disease Outbreaks

- The CDC is mobilizing personnel to the Canary Islands to [escort affected passengers](#) back to the U.S. via charter flights following the Hantavirus outbreak.
- Spanish health authorities are monitoring a 32-year-old woman in Alicante who showed symptoms after [contact with an infected passenger](#) on a flight from South Africa.
- CARPHA is advocating for multi-sectoral measures that link [finance, environment, and health](#) to protect the tourism industry from infectious diseases.

Geopolitical Power Dynamics & International Relations

- Iran claims its maritime actions are "in response to attacks by the other party," maintaining a [precarious truce](#) that could collapse if the threshold of "sporadic attacks" is crossed.
- The U.S. is pushing for a third round of negotiations with Lebanon and Israel next week to address the [ongoing border conflict](#) following the death of a Radwan Force elite commander.

Economic Security & Labor

- The Spanish government argues that regularizing 500,000 migrants is essential for [contributing to the prosperity](#) and growth of the country, noting their significant role in social security.
- Aruba is facing a legal challenge from electric scooter companies after the government [suddenly removed the vehicles](#) from the hotel sector, leading to a summary judgment case.

Domestic Stability & Social Order

- Aruba's Minister Herdei is considering [Cero Colorado](#) as a potential area for residential development to mitigate a 10-year backlog in housing demand.
- A 39-year-old American tourist was [fatally injured](#) in a UTV accident at Blackstone Beach, highlighting ongoing safety concerns in Aruba's adventure tourism sector.

LEGISLATIVE ROUNDUP

Legislative and regulatory focus has shifted toward large-scale social engineering in Europe and infrastructure management in the Caribbean, punctuated by emergency health protocols.

BILLS DISCUSSED/DEBATED:

- **Spanish Extraordinary Regularization Process 2026:** A policy allowing irregular migrants who arrived before January 1, 2026, to [obtain residence and work permits](#) if they meet clean criminal record and five-month residency requirements.

- **Aruba Land Destination Policy:** A proposed management plan by the DIP to [designate new residential areas](#) and accelerate the certification of housing units.

HEARINGS & PRESS EVENTS:

- **Minister Elma Saiz Interview:** The Spanish Minister of Migrations addressed the "illusion" and "human rights" focus of the [new regularization procedure](#) while in New York.
- **Aruba Court Summary Case:** A judge heard arguments from the government and green-tech companies regarding the [abrupt ban on electric scooters](#) in tourist zones.
- **CARPHA Regional Briefing:** Health officials emphasized that "healthy tourism" requires [cross-sectional measures](#) to prevent "imported" visitor illnesses.

DEEP DIVE: TRENDS AND THEMES

Institutionalization of Asymmetric Maritime Warfare

The creation of an Iranian "organism" to control the Strait of Hormuz suggests a shift from sporadic harassment to a permanent state of [bureaucratic blockade](#). By recording and controlling traffic, Iran is leveraging the 20% of global oil that historically transited the region to force a negotiated pact with the U.S. The presence of 1,500 trapped ships indicates that the "truce" is increasingly nominal, as the economic impact of the blockade mirrors that of an active conflict.

The Evolution of Biosurveillance Standards

The CDC's Level 3 response to Hantavirus marks a critical pivot in how global health

agencies treat traditionally zoonotic diseases. The focus on [person-to-person transmission](#) and the proactive deployment of personnel to foreign ports (Tenerife) to intercept passengers signifies a new era of aggressive, forward-deployed biosurveillance. This is echoed in the Caribbean by CARPHA's push for "novel confidential systems" of [early warning](#), suggesting that health security is becoming the primary metric for tourism viability.

Demographic Engineering vs. Infrastructure Limits

Spain and Aruba represent two sides of a housing crisis. Spain is moving to [regularize 500,000 migrants](#) to bolster its labor force and social security, gambling that the economic output will offset the strain on public services. Conversely, Aruba is paralyzed by a [housing deficit](#) that threatens its social fabric, where even with potential new land designations, the state capacity to build lags far behind the actual need. This tension suggests that "social justice" policies may soon collide with the hard physical limits of urban infrastructure.

STRATEGIC FORESIGHT

Short Term (1-4 Weeks): Expect a significant spike in global oil and shipping insurance premiums as the [1,500 ships](#) remain trapped in Hormuz. Public health authorities will likely expand the quarantine zone for *MV Ondius* passengers, potentially disrupting air travel between Spain, South Africa, and the U.S. if more secondary Hantavirus cases are confirmed.

Medium Term (1-6 Months): The Spanish labor market will undergo a major transformation as [half a million workers](#) enter the formal economy, likely driving down

informal labor costs but increasing political friction over housing. In the Caribbean, the implementation of [CARPHA's health standards](#) could create a "green-zone" for tourism that excludes islands unable to meet high-tech biosurveillance requirements.

Long Term (1-5 Years): If Iran maintains its [maritime control organism](#), the Strait of Hormuz may be permanently bypassed by new pipeline projects or alternative routes, fundamentally altering global energy logistics. Aruba's failure to address its [housing crisis](#) could lead to significant labor shortages in the tourism sector as local workers are priced out of the island.

RECOMMENDATIONS & IMPLICATIONS

For International Policy:

- Diplomatic efforts should prioritize the de-escalation of the [Hormuz blockade](#), as the current "truce" is insufficient to prevent global economic contagion from stalled shipping.
- Multilateral health organizations must standardize protocols for [transmissible Hantavirus](#) to prevent a repeat of the uncoordinated tracking currently seen between the U.S. and Spain.
- EU partners should monitor the [Spanish regularization model](#) as a potential blueprint—or warning—for managing aging demographics through mass integration.

For Private Sector/Investors:

- Logistics and supply chain managers should immediately diversify routes away from the Persian Gulf to avoid the [growing maritime bottleneck](#).

- Real estate investors in Spain may see increased demand for low-to-mid-tier housing following the [mass regularization](#), though regulatory risks regarding "racist clauses" and rent controls are rising.
- Tourism operators in the Caribbean should invest in [CARPHA-certified health standards](#) to maintain market access as biosurveillance becomes a competitive advantage.

ABOUT THIS REPORT

Today's Media Trends is a public interest experiment in applying deep thematic trend analysis to television news coverage from around the world to explore how responsibly applied advanced AI can help journalists and scholars better understand the overarching trends, themes and patterns of our global world.

No data is used to train or tune any AI model.

Each morning, in collaboration with the Internet Archive's TV News Archive, we apply Google's Gemini 3 to deeply examine yesterday's coverage from each television news channel to tease out the overarching themes and trends of its news coverage into a richly annotated thematic analysis. Each high-level insight is connected back to the original broadcast, allowing journalists and scholars to understand the dominate themes and trends and instantly click out to the underlying sources for details.

By helping journalists and scholars see the broader trends and patterns of global news coverage, this analysis helps them identify relevant stories and coverage they might not otherwise have encountered and uncover connections, emphases and narrative shifts

that enable more comprehensive reporting and deeper, evidence-based research.

This report is entirely machine generated using Gemini 3 and may include errors and omissions. Please verify all findings. No data is used to train or tune any AI model.

For questions or suggestions, please contact kalev.leetaru5@gmail.com. You can also learn more about the GDEL Project at <https://blog.gdelproject.org/> and the Internet Archive's TV News Archive at <https://archive.org/details/tv>.