

TODAY'S MEDIA TRENDS

LRT

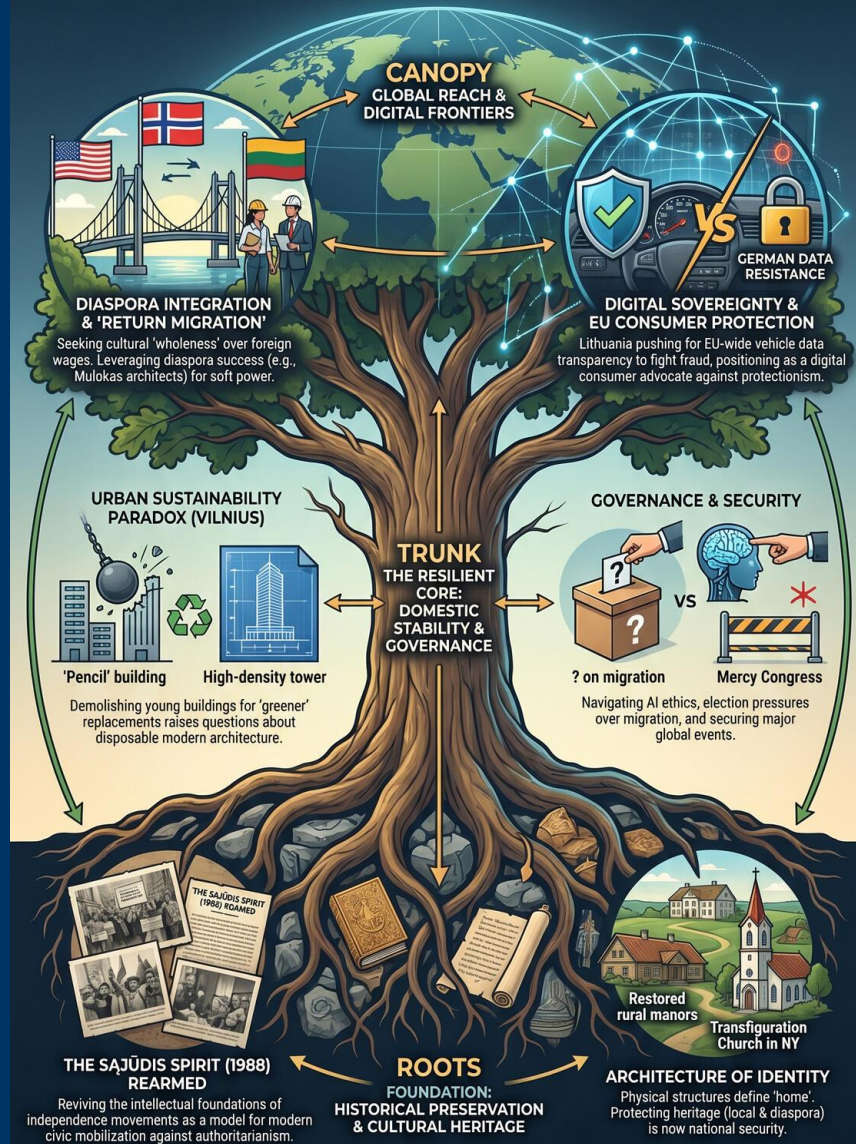
MAY 10, 2026

THE GDELT PROJECT



LITHUANIAN STRATEGIC RESILIENCE: BALANCING IDENTITY, HISTORY, & DIGITAL FUTURE

DAY-AT-A-GLANCE: May 2026 serves as a pivotal moment. Lithuania is aggressively 'rooting' itself in history to survive a volatile geopolitical and technological future, leveraging diaspora integration and digital transparency as tools for national cohesion and soft power.



STRATEGIC FORESIGHT (TIMELINE)

Short-term: Eurovision/Mercy Congress security
Medium-term: EU Vehicle Data showdown
Long-term: Demographic re-balancing via returnees & shift to Asian tech imports

RECOMMENDATIONS & IMPLICATIONS

Policy: Champion 'Digital Consumer Sovereignty' in EU
Invest: 'Urban Mining' & Green Construction tech
Engage: Create global registry of Lithuanian diaspora architecture

TODAY'S MEDIA TRENDS

LRT

MAY 10, 2026

LITHUANIAN STRATEGIC
RESILIENCE: BALANCING
DIASPORA INTEGRATION,
HISTORICAL PRESERVATION, AND
DIGITAL TRANSPARENCY

DAY-AT-A-GLANCE

May 10, 2026, serves as a pivotal moment for Lithuania as it navigates the complexities of maintaining a national identity across a global diaspora while confronting modern regulatory and technological challenges. Strategic focus remains heavily weighted toward the integration of the Lithuanian diaspora, with high-profile narratives emerging from the United States, Norway, and the United Kingdom. These stories emphasize a "return migration" trend, fueled by a desire for cultural "wholeness" that outweighs Western economic incentives. Simultaneously, the state is leveraging its architectural and historical legacy—specifically the 1988 Sajūdis movement and the works of diaspora architects—as a tool for national cohesion and soft power projection.

On the European stage, Lithuania is positioning itself as a proponent of digital transparency within the EU's "Roadworthy

Vehicle Package." This initiative, aimed at standardizing vehicle mileage and accident data, faces significant friction from member states like Germany, highlighting a broader conflict between consumer protection and the commercial interests of major automotive exporters. Domestically, the tension between urban modernization and environmental sustainability is manifest in the planned demolition of iconic but relatively young structures in Vilnius. These developments, set against the backdrop of the 70th Eurovision Song Contest and the upcoming Mercy Congress, underscore a nation aggressively "rooting" itself in history to survive a volatile geopolitical and technological future.

MAJOR DEVELOPMENTS

Diaspora Integration and Return Migration Dynamics

- The Lithuanian diaspora in Santa Monica and Los Angeles continues to maintain high levels of cultural engagement through architectural legacies, such as the [Jonas Mulokas _____ estates](#), and language preservation in third-generation descendants.
- Economic return migration is exemplified by professionals like Gediminas Kuica, who shuttered a successful business in Norway to [rebuild a career](#) in Lithuania, signaling a shift in the perceived value of local "social and emotional fulfillment" over foreign wages.
- Lithuanian schools in Norway report an [increasing demand for academic language certification](#) as families prepare for reintegration into the Lithuanian education system.

Regulatory Conflict Over EU Vehicle Data Transparency

- The EU is debating the [Roadworthy Vehicle Package](#), which would mandate the sharing of mileage and accident history to prevent fraud in the used car market.
- Germany is leading the opposition, citing strict data privacy laws, though critics suggest this may be a move to [protect automotive manufacturers](#) from public scrutiny regarding vehicle reliability and defect trends.
- Lithuania is expected to use its upcoming EU Presidency to [push for broader data opening](#) to protect consumers from the influx of potentially unsafe second-hand imports.

Historical Revisionism and Cultural Heritage Preservation

- Arvydas Juozaitis is promoting a new historical study of the 1988 Sąjūdis movement, detailing the ["proto-bomb" lectures](#) that challenged Soviet authority and catalyzed national independence.
- The State Cultural Heritage Commission celebrated its 30th anniversary, emphasizing its role as a ["litmus paper of conscience"](#) for the state's preservation policies, especially regarding the Sapiegos Palace and rural manors.
- Concerns are mounting over the [threatened demolition](#) of Jonas Mulokas's Transfiguration Church in New York, a masterpiece of Lithuanian-American modernist architecture.

Urban Sustainability vs. Modernization in Vilnius

- Vilnius is facing a sustainability paradox as the 25-year-old "Pencil" building is [slated for demolition](#) to make way for more energy-efficient, high-density structures.
- Developers claim a 90% [recycling rate for materials](#), yet the move raises questions about the "disposable" nature of modern urban architecture.

KEY GOVERNANCE TOPICS

AI and Technology Policy

- Architectural historian Kazys Varnelis Jr. is leading a critique of "hyper-realistic" AI-generated imagery, arguing for a return to [intentional digital defects](#) to preserve human artistic agency and historical truth.
- Eurovision organizers have implemented [new digital safeguards](#) to prevent mass-voting manipulation via burner phones or bank cards, a direct response to alleged state-sponsored voting patterns in previous years.

Geopolitical Power Dynamics

- Russian President Putin continues to signal a preference for [negotiating with "friendly" former European leaders](#) like Gerhard Schröder, attempting to bypass current EU diplomatic structures.
- Armenia is reportedly [distancing itself from Russian influence](#) and seeking closer ties with Western security architectures.

Domestic Stability and Social Order

- Vilnius Mayor Valdas Benkunskas is active in [collecting signatures regarding migrant policy](#), indicating that immigration remains a highly charged political lever ahead of upcoming elections.
- The "Mercy Congress" in June is expected to draw 500 global pilgrims and [open long-closed historical sites](#) (former prisons and monasteries), serving as a major test for Vilnius's tourism and security infrastructure.

LEGISLATIVE ROUNDUP

Legislative activity centered on EU-wide transport regulation and domestic cultural preservation. Significant debate occurred regarding the balance between private data protection and public market transparency, alongside efforts to streamline the complex management of historical heritage.

BILLS DISCUSSED/DEBATED

- **Roadworthy Vehicle Package (EU):** A proposed mandate for mandatory [sharing of vehicle history data](#) across all EU member states to combat mileage fraud and improve road safety.
- **Law on the Protection of Immovable Cultural Heritage:** Currently before the Seimas, this law aims to simplify [heritage management procedures](#) which are currently described as overly complex and difficult to apply practically.

HEARINGS & PRESS EVENTS

- **30th Anniversary of the State Cultural Heritage Commission:** A series of reports and speeches detailing the commission's [strategic role in advising the Seimas](#), President, and Government on preservation trends and "looming dangers."
- **LSDP Festive Congress:** The Social Democrats (LSDP) re-elected their permanent chairperson and [discussed election strategy](#), with a notable focus on appearing "democratic" despite having only one candidate.
- **Historical Memory Press Event:** Arvydas Juozaitis presented his research on the [intellectual foundations of the Sąjūdis](#) movement, framing it as a model for modern civic mobilization.

DEEP DIVE: TRENDS AND THEMES

The Architecture of Identity

Architecture is emerging as a primary battleground for Lithuanian identity. From the [Mulokas family in California](#) to the [restored rural manors](#) in Lithuania, there is a clear trend of using physical structures to anchor a sense of "home" in a globalized world. The threat of losing the [Transfiguration Church in New York](#) is treated not just as a loss of property, but as a symbolic erasure of the diaspora's contribution to Western modernism. This trend suggests that Lithuania sees its "Global Lithuania" strategy as being physically manifested in stone and mortar, making architectural preservation a matter of national security and cultural continuity.

Digital Sovereignty and Consumer Protection

The debate over the [EU Vehicle Data Package](#) reveals a deeper rift in European digital policy. Lithuania, as a major importer of used cars, views data transparency as a necessity for public safety and economic fairness. Germany's resistance, framed as "data privacy," is analyzed by local experts as a form of [protectionism for its auto industry](#). This highlights a trend where Lithuania increasingly aligns with transparency-focused blocs to challenge the dominance of larger EU economies that prioritize corporate secrets over cross-border consumer rights.

The "Sajūdis Spirit" as a Modern Political Tool

There is a concerted effort by historical figures like Juozaitis to [re-institutionalize the memory](#) of the 1988 independence movement. By publishing thick, document-heavy volumes, they aim to provide a "textbook" for modern civic resistance. This narrative is being used to contrast the "heroic" past with the [modern bureaucratic political landscape](#) (such as the LSDP leadership critiques), suggesting a growing appetite for a more "idealistic" or "grassroots" political movement similar to the one that brought down the Soviet regime.

STRATEGIC FORESIGHT

Short Term (1-4 Weeks)

- Expect heightened security and social media monitoring surrounding the [Eurovision Song Contest](#) in Vienna due to Israel's participation and potential "hybrid" threats or coordinated boycotts.
- A surge in religious tourism to Vilnius is likely as the [Mercy Congress begins](#), potentially causing temporary logistical strain on the capital's historic district.

Medium Term (1-6 Months)

- The "Roadworthy Vehicle Package" will likely become a [flashpoint during Lithuania's EU presidency](#), potentially leading to a compromise that allows for limited data sharing but sets a precedent for digital vehicle passports.
- Demolition of the ["Pencil" building](#) will trigger a broader national debate on urban planning laws and the "minimum lifespan" of commercial buildings before they can be legally demolished for sustainability reasons.

Long Term (1-5 Years)

- Lithuania will likely see a significant [demographic "re-balancing"](#) as Western-educated diaspora members return to take high-level positions, potentially shifting the work culture to more "Norwegian" or "American" models, as seen in the barbering and architecture sectors.
- The struggle between Chinese EV dominance and [declining European car quality](#) will force a massive shift in Lithuanian import patterns, possibly leading to higher reliance on Asian automotive technologies if EU transparency fails to improve.

RECOMMENDATIONS & IMPLICATIONS

For International Policy:

- Lithuania should leverage its [EU presidency](#) to champion "Digital Consumer Sovereignty," making the vehicle data sharing packet a model for other sectors (electronics, appliances).

- Deepen engagement with the "intellectual diaspora" (e.g., the [Mulokas and Varnelis families](#)) to create a formal global registry of Lithuanian architectural heritage abroad, seeking UNESCO or state-level protections.
- Monitor the Armenian-Russian [diplomatic shift](#) to provide "Sajūdis-style" governance training and institutional support as Armenia pivots West.

For Private Sector/Investors:

- **Green Construction:** The shift toward [dismantling rather than demolishing](#) buildings presents a major investment opportunity in "urban mining" and material recycling technologies in the Baltic region.
- **Used Vehicle Tech:** There is a high-growth niche for digital platforms that can [verify vehicle history](#) using non-traditional data sets (insurance logs, private garage networks) while EU legislation remains stalled.
- **Specialized Services:** Returning diaspora members like [Gediminas Kuica](#) are creating a "premium niche" in local services; investors should target high-end service businesses that bring Western "standard of care" to the growing local affluent class.

ABOUT THIS REPORT

Today's Media Trends is a public interest experiment in applying deep thematic trend analysis to television news coverage from around the world to explore how responsibly applied advanced AI can help journalists and

scholars better understand the overarching trends, themes and patterns of our global world.

No data is used to train or tune any AI model.

Each morning, in collaboration with the Internet Archive's TV News Archive, we apply Google's Gemini 3 to deeply examine yesterday's coverage from each television news channel to tease out the overarching themes and trends of its news coverage into a richly annotated thematic analysis. Each high-level insight is connected back to the original broadcast, allowing journalists and scholars to understand the dominate themes and trends and instantly click out to the underlying sources for details.

By helping journalists and scholars see the broader trends and patterns of global news coverage, this analysis helps them identify relevant stories and coverage they might not otherwise have encountered and uncover connections, emphases and narrative shifts that enable more comprehensive reporting and deeper, evidence-based research.

This report is entirely machine generated using Gemini 3 and may include errors and omissions. Please verify all findings. No data is used to train or tune any AI model.

For questions or suggestions, please contact kalev.leetaru5@gmail.com. You can also learn more about the GDELT Project at <https://blog.gdeltproject.org/> and the Internet Archive's TV News Archive at <https://archive.org/details/tv>.