

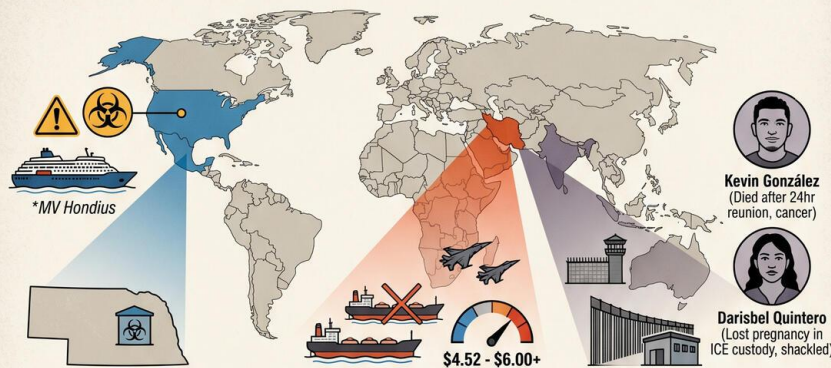
# TODAY'S MEDIA TRENDS

KSTS

MAY 11, 2026

THE GDELT PROJECT

## THE TRIPLE CRISIS: HEALTH, CONFLICT, & IMMIGRATION (MAY 2026 WORLD REPORT)



### BIOSURVEILLANCE CRISIS (Hantavirus Andes Strain)

**MV Hondius Outbreak:** Person-to-person Hantavirus. 17 Americans repatriated to Omaha specialized unit. High-level biosecurity protocols, "muscle memory" from pandemic.

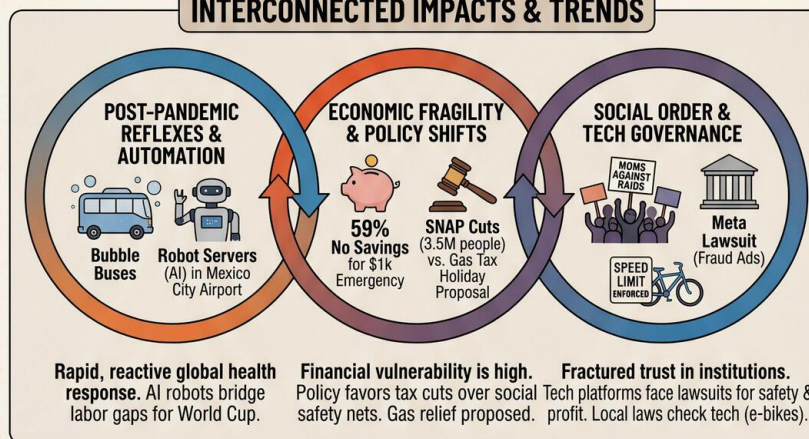
### GEOPOLITICAL CONFLICT & ECONOMIC STRAIN (War against Iran)

**Strait of Hormuz Blockade:** Disrupts global oil. U.S. rejects Iran peace deal. "Big Beautiful Bill" cuts SNAP, maintains wealthy tax breaks, fueling inflation.

### RIGID IMMIGRATION ENFORCEMENT & HUMAN TOLL

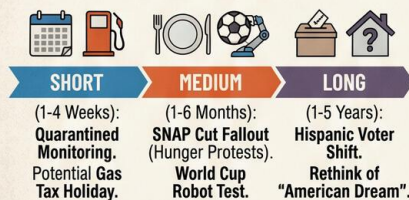
**Tragic Consequences:** "Industrialized deportation" separates families. Terminal illness & in-custody pregnancy loss highlight humanitarian failures. Protests grow.

## INTERCONNECTED IMPACTS & TRENDS



## STRATEGIC FORESIGHT & FUTURE IMPLICATIONS

### FORESIGHT TIMELINE (Short to Long Term)



### RECOMMENDATIONS & INVESTOR OUTLOOK

- POLICY & HUMAN RIGHTS**
- Multilateral diplomacy for Iran blockade.
  - Cruise health safety standards (like aviation).
  - Increased international oversight of detention.
- PRIVATE SECTOR & RESILIENCE**
- Hedge against supply chain/fuel volatility.
  - Invest in service automation & robotics (Mexico).
  - Ensure regulatory compliance (e.g., e-bike speeds).

# TODAY'S MEDIA TRENDS

KSTS

MAY 11, 2026

---

THE HUMAN AND ECONOMIC TOLL  
OF DISEASE OUTBREAKS,  
GEOPOLITICAL CONFLICT, AND  
RIGID IMMIGRATION  
ENFORCEMENT

## DAY-AT-A-GLANCE

---

The reporting of May 11, 2026, depicts a world strained by a lethal biosurveillance crisis, escalating geopolitical conflict in the Middle East, and the polarizing domestic consequences of "President Trump's" executive policies. The primary international concern focuses on the [evacuation of American citizens](#) from the \*MV Hondius\* cruise ship following a deadly outbreak of the Andes strain of Hantavirus. Unlike typical Hantavirus occurrences, this strain's potential for person-to-person transmission has triggered high-level biosecurity protocols in Omaha and Atlanta. While health officials emphasize the risk to the general public remains low, the deployment of 400 professionals and the use of specialized biocontainment units suggest a heightened state of alert reminiscent of the early 2020s.

Domestically, the "War against Iran" is manifesting as a severe economic burden,

with gasoline prices reaching [unprecedented levels](#) of \$4.52 nationally and over \$6.00 in California. This inflationary pressure is intersecting with the "Big Beautiful Bill"—a fiscal policy that maintains tax cuts for the wealthy while implementing [deep cuts to social safety nets](#) like SNAP (food stamps). The human cost of these policies is further underscored by the death of 18-year-old Kevin González, who succumbed to cancer shortly after a brief, 24-hour reunion with his deported parents. This tragedy, alongside reports of an immigrant losing a [pregnancy in ICE custody](#), highlights the ongoing tension between rigid national security enforcement and humanitarian concerns. Meanwhile, as the 2026 World Cup approaches, regional actors like Mexico are turning to [robotics and AI](#) to mitigate massive labor shortages in the service industry.

## MAJOR DEVELOPMENTS

---

- **Global Hantavirus Outbreak and Repatriation:** A specialized Department of State flight returned 17 Americans and one British resident from the \*MV Hondius\* cruise ship to the U.S. for [mandatory quarantine and evaluation](#). The outbreak, involving the Andes strain of Hantavirus which can spread person-to-person, has already caused three deaths and multiple confirmed infections among the 152 people aboard. One passenger has tested positive upon arrival, and [another is symptomatic](#).

- **Escalating Conflict with Iran:** The Trump administration has rejected a peace proposal from Iran, mediated by Pakistan, labeling the terms "inacceptable." The [ongoing maritime blockade](#) of the Strait of Hormuz by Iran and U.S. counter-measures against Iranian ports continue to disrupt global oil supplies and drive domestic fuel inflation.
- **Humanitarian Fallout of Immigration Enforcement:** Kevin González, an 18-year-old suffering from terminal colon cancer, [passed away in Durango, Mexico](#), only hours after being reunited with his parents. His parents had been arrested and deported after attempting to enter the U.S. to see him. Simultaneously, allegations have surfaced regarding a Venezuelan woman who [lost her baby](#) while in ICE custody, reportedly while being shackled to a hospital bed.
- **Economic Stress and Financial Fragility:** New data indicates that [59% of Americans](#) lack sufficient savings to cover a \$1,000 emergency. This vulnerability is exacerbated by fuel prices being \$1.50 higher than pre-war levels and significant [reductions in food assistance](#) due to federal policy shifts.
- **Labor Automation in the Service Sector:** In preparation for the 2026 World Cup, Mexican hospitality firms are deploying [AI-driven "robot servers"](#) to address a deficit of approximately 500,000 workers. These units are being used to bridge language gaps for international tourists and handle increased demand in high-traffic areas like Mexico City's airport.

## **KEY GOVERNANCE TOPICS**

---

**Biosurveillance & Disease Outbreaks:** The \*MV Hondius\* incident represents a

significant test of the current biosurveillance architecture. Authorities are implementing [42-day quarantine protocols](#) for those exposed to the Andes Hantavirus strain. The focus is on the [National Quarantine Unit](#) in Omaha, Nebraska, which utilizes negative pressure technology to prevent the escape of pathogens.

**Energy Security & Economic Stability:** Secretary of Energy Chris Wright has signaled a willingness to [suspend the federal gas tax](#) (approximately 18 cents per gallon) to provide immediate relief to consumers as the war with Iran continues to inflate energy costs. Despite this, experts warn that a tax suspension will not return prices to the [sub-\\$3.00 levels](#) seen prior to the conflict.

**Domestic Stability & Social Order:** Trust in government institutions appears to be fracturing. A recent survey reveals that [one in four Americans](#) believes the assassination attempt on "President Trump" at the White House Correspondents' Dinner was a staged event. Meanwhile, groups of mothers are organizing protests in [Los Angeles and Miami](#) to denounce aggressive immigration raids and the conditions within detention centers.

**Technology Policy & Digital Sovereignty:** Santa Clara County has filed a [lawsuit against Meta](#) (Facebook/Instagram/WhatsApp), alleging the platform prioritizes profits over safety by allowing billions of dollars in fraudulent advertisements. Furthermore, Amazon has agreed to [cease selling e-bikes](#) that exceed California's legal speed limits following a surge in fatalities and pressure from the State Attorney General.

**Food & Water Access:** The "Big Beautiful Bill" has resulted in the [loss of SNAP benefits](#) for approximately 3.5 million people nationally. Critics argue these cuts are

devastating for families in states like Arizona, where additional state-level bureaucratic hurdles have been implemented to accelerate the removal of beneficiaries.

## LEGISLATIVE ROUNDUP

---

Recent legislative and policy shifts under the Trump administration focus on fiscal conservatism regarding social programs alongside new initiatives for family health and energy relief. These moves are occurring amidst ongoing legal battles regarding corporate accountability and criminal proceedings for high-profile suspects.

### BILLS DISCUSSED/DEBATED:

- **The Big Beautiful Bill:** A major federal law that [cut \\$187 billion](#) in food assistance over the next decade while maintaining tax breaks for high earners.
- **Moms (More Opportunities for Moms to Succeed):** A new White House proposal aimed at [expanding access to IVF](#) and improving insurance benefits for maternal care.
- **Federal Gas Tax Suspension:** A proposed executive or legislative action to [suspend the 18-cent federal tax](#) to mitigate war-related fuel inflation.
- **SFPD Contract:** A new four-year [police union contract](#) in San Francisco aimed at stabilizing law enforcement operations, effective July 1.

### HEARINGS & PRESS EVENTS:

- **Nebraska Biocontainment Press Conference:** Health officials from the CDC and the University of Nebraska [briefed the press](#) on the low risk of the Hantavirus outbreak to the general public while confirming quarantine details.

- **Cole Thomas Allen Arraignment:** The suspect in the [Trump assassination attempt](#) pleaded not guilty to four federal charges.
- **OpenAI Lawsuit:** The widow of a shooting victim is [suing OpenAI](#), claiming ChatGPT failed to report or detect the perpetrator's plan to use the software to facilitate the attack.

## DEEP DIVE: TRENDS AND THEMES

---

**The Weaponization of Logistics in Migration:** A recurring theme is the perceived industrialization of deportation. Critics within the Democratic party and activist circles have described the movement of migrant children and families as a ["production line"](#) that prioritizes volume and speed over safety and human rights. The case of [Darisbel Quintero](#), who lost a pregnancy while reportedly shackled, serves as a focal point for this narrative, illustrating the tension between "rule of law" enforcement and humanitarian standards.

**Post-Pandemic Reflexes in Biosurveillance:** The response to the Hantavirus on the \*MV Hondius\* demonstrates a "muscle memory" developed during the COVID-19 pandemic. The rapid deployment of "autobús burbuja" (bubble buses) and [international coordination between 23 countries](#) shows a highly evolved, yet still reactive, global security architecture. The skepticism expressed by the public regarding these health crises—and even political assassinations—suggests that "official" narratives are facing an [unprecedented credibility gap](#).

**Automated Resilience:** As the service sector faces a [500,000-worker deficit](#) ahead of the World Cup, the integration of AI and robotics

is no longer a luxury but a strategic necessity. This shift in Mexico City indicates a broader global trend where technology is being used to insulate the economy from labor shortages caused by shifting demographics and migration patterns.

## **STRATEGIC FORESIGHT**

---

**Short Term (1-4 Weeks):** Expect heightened monitoring of the 17 quarantined Americans. If the "Andes strain" shows [confirmed person-to-person transmission](#) within the Nebraska facility, it could trigger localized travel restrictions or broader cruise industry shutdowns. Politically, the proposed gas tax holiday will likely be implemented before Memorial Day to secure [public favor](#) ahead of the summer travel season.

**Medium Term (1-6 Months):** The fallout from SNAP cuts will likely lead to increased demand at private food banks and could spark civil unrest or "hunger protests" in [vulnerable states like Arizona](#). The 2026 World Cup will serve as a massive live-test for hospitality robotics, likely leading to a surge in [investment in service-sector automation](#) across North America.

**Long Term (1-5 Years):** The cumulative effect of high-visibility tragedies like that of [Kevin González](#) may drive a significant shift in Hispanic voter alignment, which is currently seen as ["changing" or volatile](#). Structurally, the persistent high cost of living and lack of emergency savings will necessitate a rethink of U.S. consumer debt and the viability of the "American Dream" for middle-to-low income households.

## **RECOMMENDATIONS & IMPLICATIONS**

---

### **For International Policy:**

- The maritime blockade by Iran requires a [multilateral diplomatic surge](#) beyond the failed U.S.-Pakistan mediation to prevent a total energy collapse in Western markets.
- The \*MV Hondius\* outbreak necessitates a standardized [international cruise health certification](#) similar to aviation safety standards to restore confidence in maritime travel.
- International human rights monitors should increase oversight of U.S. detention facilities following reports of [pregnancy loss in custody](#) to ensure adherence to international law.

### **For Private Sector/Investors:**

- **Supply Chain Risk:** Ongoing tensions in the [Strait of Hormuz](#) mean logistics and transport firms should hedge against persistent fuel volatility and potential "emergency" tax policy shifts.
- **Investment Opportunity:** The hospitality sector's [500,000-person labor shortage](#) in Mexico creates a massive opening for robotics and AI firms specializing in service-automation and real-time translation.
- **Regulatory Compliance:** Manufacturers of e-bikes and other micro-mobility devices must align with [California's stricter speed regulations](#) or face total exclusion from major online marketplaces like Amazon.

## **ABOUT THIS REPORT**

---

**Today's Media Trends** is a public interest experiment in applying deep thematic trend

analysis to television news coverage from around the world to explore how responsibly applied advanced AI can help journalists and scholars better understand the overarching trends, themes and patterns of our global world.

**No data is used to train or tune any AI model.**

Each morning, in collaboration with the Internet Archive's TV News Archive, we apply Google's Gemini 3 to deeply examine yesterday's coverage from each television news channel to tease out the overarching themes and trends of its news coverage into a richly annotated thematic analysis. Each high-level insight is connected back to the original broadcast, allowing journalists and scholars to understand the dominate themes and trends and instantly click out to the underlying sources for details.

By helping journalists and scholars see the broader trends and patterns of global news coverage, this analysis helps them identify relevant stories and coverage they might not otherwise have encountered and uncover connections, emphases and narrative shifts that enable more comprehensive reporting and deeper, evidence-based research.

This report is entirely machine generated using Gemini 3 and may include errors and omissions. Please verify all findings. No data is used to train or tune any AI model.

For questions or suggestions, please contact [kalev.leetaru5@gmail.com](mailto:kalev.leetaru5@gmail.com). You can also learn more about the GDELT Project at <https://blog.gdeltproject.org/> and the Internet Archive's TV News Archive at <https://archive.org/details/tv>.