

TODAY'S MEDIA TRENDS

KSTS


MAY 12, 2026

THE GDELT PROJECT

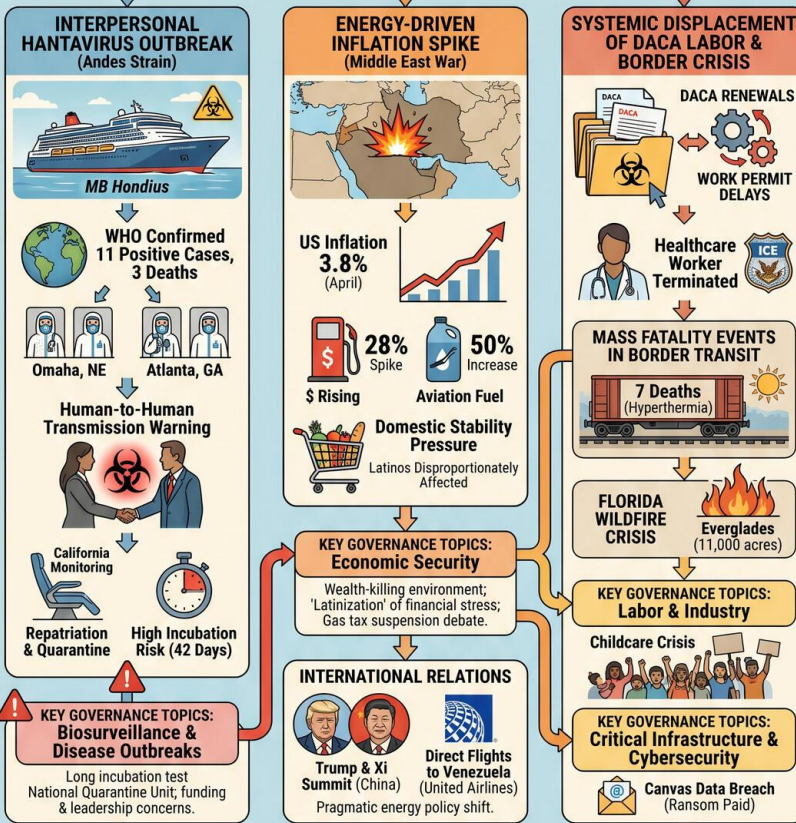
GLOBAL INSTABILITY CONVERGES:

A Rare Hantavirus Outbreak, A Middle Eastern Energy War, & Systemic DACA Processing Failures Create A High-Risk Domestic Environment.

DAY-AT-A-GLANCE
May 12, 2026
GLOBAL INSTABILITY CONVERGES: A Rare Hantavirus Outbreak, A Middle Eastern Energy War, & Systemic DACA Processing Failures Create A High-Risk Domestic Environment.



MAJOR DEVELOPMENTS



DEEP DIVE & FUTURE OUTLOOK

<p>DEEP DIVE: TRENDS & THEMES</p> <ul style="list-style-type: none"> Administrative Atrophy (Data Breakdown) The Energy-Security Nexus (Targeted Shock) The "Latinization" of US Demographics (Viral AI & Vulnerability) 	<p>STRATEGIC FORESIGHT</p> <ul style="list-style-type: none"> Short Term (1-4 Weeks): Hantavirus Cases Rise, Gas Prices Up Medium Term (1-6 Months): Venezuela Energy Deal, World Cup Prep Long Term (1-5 Years): Labor Demographic Shift, AI Regulation 	<p>RECOMMENDATIONS & IMPLICATIONS</p> <ul style="list-style-type: none"> For International Policy: <ul style="list-style-type: none"> Modernize Biosurveillance Formalize Venezuela Energy Framework Secure Mexico Stability For Private Sector/Investors: <ul style="list-style-type: none"> Supply Chain Risk (Fuel Alternatives) Regulatory Compliance (DACA Verification) Cyber Risk (Decentralized Data) 	<p>LEGISLATIVE ROUNDUP</p> <ul style="list-style-type: none"> CA Fans First Act Mexico School Calendar (Withdrawn) Fresno Library/Pride SF Police Agreement San Jose Budget
--	--	--	---

TODAY'S MEDIA TRENDS

KSTS

MAY 12, 2026

**GLOBAL INSTABILITY CONVERGES
AS A RARE HANTAVIRUS
OUTBREAK, A MIDDLE EASTERN
ENERGY WAR, AND SYSTEMIC DACA
PROCESSING FAILURES CREATE A
HIGH-RISK DOMESTIC
ENVIRONMENT.**

DAY-AT-A-GLANCE

May 12, 2026, was marked by a volatile convergence of public health, economic, and geopolitical crises. A rare outbreak of the Andes strain of Hantavirus, characterized by human-to-human transmission, has triggered international biosurveillance protocols following a deadly cluster on the MB Hondius cruiseliner. While health officials attempt to project calm, the repatriation of exposed citizens to specialized biocontainment units in Nebraska and Georgia suggests a heightened level of concern regarding the potential for wider contagion. This biological threat is shadowed by a significant economic shock; US inflation surged to 3.8% in April, driven by a 28% spike in gasoline prices tied directly to the escalating war in the Middle East involving Iran. The convergence of energy scarcity and rising grocery costs is placing

extreme pressure on domestic stability, particularly within Latino communities where financial anxiety is reaching critical levels.

Simultaneously, the US immigration system is facing a systemic breakdown. Chronic delays in DACA renewals have shifted from a bureaucratic nuisance to a critical labor and security issue, as essential workers—including healthcare professionals—are being terminated or arrested by ICE despite having valid claims to work authorization. This administrative failure coincides with a humanitarian tragedy at the southern border, where extreme heat has claimed at least seven lives in or near train cars in Texas within a 24-hour window. Meanwhile, the administration is engaging in high-stakes diplomacy, with former President Trump traveling to China to negotiate on trade and energy amidst the Iranian conflict, and the resumption of direct flights to Venezuela signaling a tactical shift in regional alignment. These developments suggest an administration struggling to manage domestic infrastructure and labor stability while navigating a fractured international order.

MAJOR DEVELOPMENTS

• **Interpersonal Hantavirus Outbreak (Andes Strain)**

- The WHO confirmed [11 positive cases](#) of Hantavirus globally, with three deaths linked to the cruiseship MB Hondius. 18 US passengers have been [repatriated and quarantined](#) in Omaha, Nebraska, and Atlanta, Georgia.
- The outbreak is specifically the "Andes" strain, which health experts warn is [capable of human-to-human transmission](#) through close contact, unlike more common rodent-borne strains.
- Four residents in California are under monitoring, including one individual who may have been [exposed during an international flight](#) while sitting near an infected person.

• **Energy-Driven Inflation Spike**

- April inflation reached 3.8%, the [highest rate in nearly three years](#), significantly outpacing wage growth for the first time since 2023.
- The price of gasoline has [risen 28% annually](#) due to the ongoing war with Iran and disruptions in the Persian Gulf.
- Aviation fuel has experienced a [50% price increase](#), threatening the stability of the transport and logistics sectors.

• **Systemic Displacement of DACA Labor**

- Delays in work permit renewals are forcing [professionals out of the workforce](#), with specific reports of nurses and healthcare workers in San Francisco being terminated or threatened with removal.
- A Venezuelan doctor was [detained for over a month](#) by ICE despite holding a valid work permit, highlighting a breakdown in inter-agency communication and data synchronization.

• **Mass Fatality Events in Border Transit**

- Authorities discovered seven bodies in Texas, including six in a [freight train car in Laredo](#) and one near tracks in San Antonio, all linked to hyperthermia from extreme heat.
- Federal investigators are treating the Laredo incident as a [human smuggling event](#), noting that the victims were unable to open the train car from the inside.

• **Florida Wildfire Crisis**

- The Everglades fire has consumed over [11,000 acres](#) between Broward and Miami-Dade counties, exacerbated by strong winds and dry conditions.
- Air quality alerts have been issued for residents in [metropolitan Miami and Fort Lauderdale](#), with containment levels currently at approximately 50-60%.

KEY GOVERNANCE TOPICS

Biosurveillance & Disease Outbreaks The MB Hondius outbreak represents a significant test of the US National Quarantine Unit in Omaha. The focus is on the [long incubation period](#) of the Andes strain (up to 42 days),

which necessitates extended isolation protocols. Concerns persist regarding [insufficient CDC funding](#) and a lack of leadership in the global response compared to previous pandemics.

Economic Security The divergence between prices and wages is creating a "wealth-killing" environment. Financial experts warn that Latinas are experiencing [disproportionate financial stress](#), with 43% reporting a decreased ability to save. Governance proposals include suspending the [federal gas tax](#) (18 cents per gallon), though critics argue this is a temporary fix for a structural energy crisis.

International Relations & Foreign Policy High-level statecraft is evident in the [Trump-Xi Jinping summit](#) in China, where Taiwan and Iranian oil supply are central themes. Parallel to this, the US has authorized [direct flights to Venezuela](#) via United Airlines for the first time since 2017, suggesting a pragmatic shift in South American regional policy to secure energy or migration cooperation.

Labor & Industry The childcare sector is facing a crisis of sustainability. Nationwide protests under the "Day Without Childcare" banner highlighted that providers are often [earning only \\$12-\\$13 an hour](#), leading to a shortage of spaces and threatening the broader workforce's ability to remain active.

Technology Policy & Digital Sovereignty Artificial Intelligence is increasingly integrated into both life-saving and cultural spheres. A Florida woman reportedly [identified her own stroke](#) using ChatGPT, while the Colombian-created "Fruity Novelas" represent a [generative AI viral phenomenon](#) that is disrupting traditional media consumption patterns.

Critical Infrastructure & Cybersecurity Instructure, the company behind the Canvas learning management system, reportedly [paid a ransom](#) to cybercriminals to prevent the leak of data for 275 million users. This highlights the ongoing vulnerability of educational infrastructure to extortion by organized hacking groups.

LEGISLATIVE ROUNDUP

Legislative activity focused on consumer protection and social policy, with local governments taking the lead on issues where federal action has stalled. Public hearings in California revealed deep divisions over LGBTQ+ representation in public institutions.

BILLS DISCUSSED/DEBATED:

- **California Fans First Act:** Proposed by Assemblymember Matt Haney, this bill would [cap ticket resale prices](#) at 10% above the original value to combat speculative selling and price gouging.
- **Mexico School Calendar Reduction:** A proposal to cut the school year by [over a month](#) for the World Cup was [withdrawn by the Secretariat of Public Education](#) following parental backlash over educational gaps.
- **Fresno County Library/Pride Policy:** The Fresno Board of Supervisors voted 3-2 to [restrict County involvement](#) in Pride Month activities and scrutinized LGBTQ+ content in libraries.

HEARINGS & PRESS EVENTS:

- **San Francisco Police Agreement:** Mayor Daniel Lurie signed legislation for a [17% salary increase](#) for police officers over four years to address a 500-officer shortage.

- **San Jose Budget Hearing:** Mayor Matt Mahan proposed a \$50 million [deficit reduction plan](#), which includes closing homeless navigation centers like the Taylor Street Hub by 2027.

DEEP DIVE: TRENDS AND THEMES

Administrative Atrophy and Labor Displacement A recurring theme is the failure of the federal government to synchronize its security and labor data. The DACA crisis—where renewals are taking so long that [professionals are being fired](#)—reveals a state capacity issue that is actively damaging the economy. The arrest of a [Venezuelan doctor](#) while holding a valid permit suggests that enforcement agencies (ICE) are operating without real-time access to labor authorization data, creating a "lawfare" environment for legal residents.

The Energy-Security Nexus Domestic economic health is now explicitly tied to the conflict in Iran. The 3.8% inflation rate is not a broad market failure but a [targeted energy shock](#). The fact that aviation fuel is up 50% and gasoline up 28% suggests that the US is in an undeclared energy emergency. This explains the [Trump-Xi summit](#) and the sudden diplomatic thaw with Venezuela; the US is prioritizing oil supply chain stability over long-standing ideological sanctions.

The "Latinization" of US Demographics Census data confirms a historic shift: six of the [20 most common surnames](#) in the US are now Latino (García, Rodríguez, Martínez, Hernández, López, González). This is transforming the domestic landscape, from [World Cup preparation](#) to the viral spread of AI-generated content tailored to Latino cultural tropes (Fruity Novelas). However, this

demographic also remains the [most vulnerable](#) to the hyperthermia deaths seen in Laredo and the economic stress of inflation.

STRATEGIC FORESIGHT

Short Term (1-4 Weeks): Expect a potential increase in Hantavirus cases as the 42-day [incubation period](#) progresses for cruise liner passengers. Domestic gasoline prices will likely continue to rise unless the China-US summit produces an immediate de-escalation in the Persian Gulf. Pressure will mount on USCIS to implement "expedited" DACA renewals to prevent a localized healthcare staffing crisis in California.

Medium Term (1-6 Months): The resumption of direct flights to Venezuela may lead to a [broader energy deal](#) to offset Iranian oil losses. As the World Cup (June 11) approaches, critical infrastructure projects like the [Mexico City Light Rail](#) and US stadium security will be tested. Persistent inflation may trigger further interest rate adjustments or significant federal intervention in the fuel market.

Long Term (1-5 Years): Structural changes in US labor demographics will force a reckoning with DACA and similar "temporary" statuses as these individuals become the [backbone of professional sectors](#). The integration of AI into basic emergency medicine (stroke detection) will require new regulatory frameworks for AI-based "diagnostics" in a legal sense.

RECOMMENDATIONS & IMPLICATIONS

For International Policy:

- The US must modernize biosurveillance sharing with South American nations to track the Andes strain, which appears to be a [higher-risk variant](#) of Hantavirus.
- Engagement with Venezuela should be formalized into an energy security framework to mitigate the "Iran-premium" currently [inflating US transport costs](#).
- Regional stability in Mexico is crucial; school calendar and transport infrastructure [controversies](#) could impact World Cup logistics.

For Private Sector/Investors:

- **Supply Chain Risk:** The 50% increase in [aviation fuel](#) poses a direct threat to just-in-time delivery models and air-freight logistics. Companies should pivot toward more fuel-efficient ground transport or maritime alternatives where possible.
- **Regulatory Compliance:** Employers of DACA recipients should prepare for [legal disruptions](#) and proactive document verification to avoid wrongful termination or ICE-related liabilities as processing backlogs continue.
- **Cyber Risk:** The Instructure ransom payment signals that [organized cybercrime](#) remains a primary threat to "soft" infrastructure (education, healthcare). Investment in decentralized data protection is paramount.

ABOUT THIS REPORT

Today's Media Trends is a public interest experiment in applying deep thematic trend

analysis to television news coverage from around the world to explore how responsibly applied advanced AI can help journalists and scholars better understand the overarching trends, themes and patterns of our global world.

No data is used to train or tune any AI model.

Each morning, in collaboration with the Internet Archive's TV News Archive, we apply Google's Gemini 3 to deeply examine yesterday's coverage from each television news channel to tease out the overarching themes and trends of its news coverage into a richly annotated thematic analysis. Each high-level insight is connected back to the original broadcast, allowing journalists and scholars to understand the dominate themes and trends and instantly click out to the underlying sources for details.

By helping journalists and scholars see the broader trends and patterns of global news coverage, this analysis helps them identify relevant stories and coverage they might not otherwise have encountered and uncover connections, emphases and narrative shifts that enable more comprehensive reporting and deeper, evidence-based research.

This report is entirely machine generated using Gemini 3 and may include errors and omissions. Please verify all findings. No data is used to train or tune any AI model.

For questions or suggestions, please contact kalev.leetaru5@gmail.com. You can also learn more about the GDELT Project at <https://blog.gdeltproject.org/> and the Internet Archive's TV News Archive at <https://archive.org/details/tv>.