

TODAY'S MEDIA TRENDS

CHANNELSTV

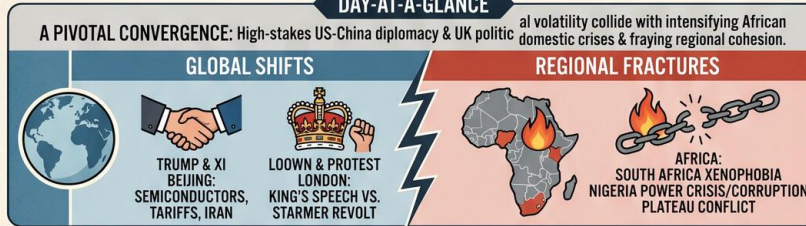
MAY 13, 2026

T H E G D E L T P R O J E C T

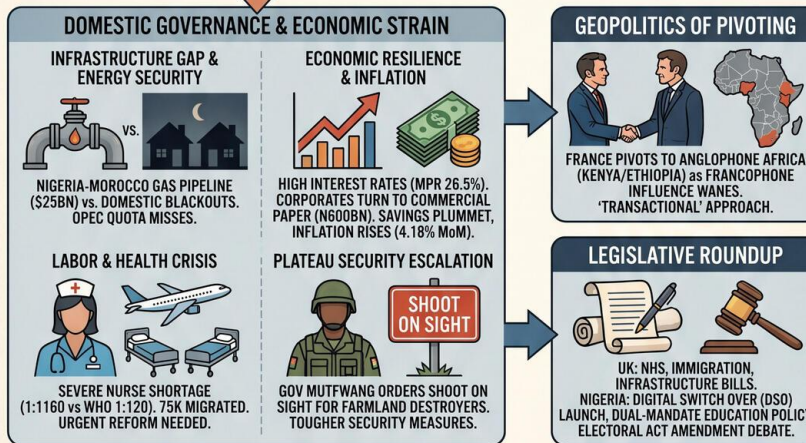
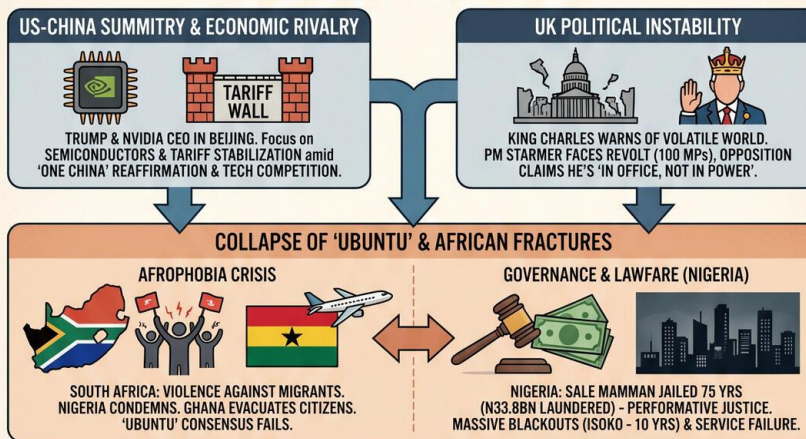
MAY 13, 2026: GLOBAL SUPERPOWER REALIGNMENTS AMIDST AFRICAN REGIONAL FRACTURES & DOMESTIC GOVERNANCE DECAY

DAY-AT-A-GLANCE

A PIVOTAL CONVERGENCE: High-stakes US-China diplomacy & UK political volatility collide with intensifying African domestic crises & fraying regional cohesion.



THE NARRATIVE OF CONVERGENCE



STRATEGIC FORESIGHT & RECOMMENDATIONS



IMPLICATIONS

INTERNATIONAL POLICY: AU MEDIATION URGENT. PREPARE FOR UK PARALYSIS. CLIMATE & CONFLICT DAMAGE.
PRIVATE SECTOR: RIGOROUS DUE DILIGENCE (NIGERIA POWER). SUPPLY CHAIN RISKS (IRAN), COMMERCIAL PAPER YIELD OPPORTUNITY.

TODAY'S MEDIA TRENDS

CHANNELSTV

MAY 13, 2026

MAY 13, 2026: GLOBAL
SUPERPOWER REALIGNMENTS
AMIDST AFRICAN REGIONAL
FRACTURES AND DOMESTIC
GOVERNANCE DECAY

DAY-AT-A-GLANCE

May 13, 2026, marks a pivotal moment of global and regional convergence, characterized by high-stakes head-of-state diplomacy and intensifying domestic crises. In Beijing, US President Donald Trump has arrived for [high stakes meetings](#) with Chinese President Xi Jinping, aimed at stabilizing a relationship strained by semiconductor rivalries, tariffs, and the ongoing conflict in Iran. This occurs simultaneously with the State Opening of Parliament in the United Kingdom, where King Charles III characterized the current era as an [increasingly dangerous and volatile](#) world, even as Prime Minister Keir Starmer faces an internal revolt with nearly [100 MPs calling](#) for his resignation.

In Africa, regional cohesion is under significant strain as South Africa faces a wave of anti-immigrant protests and violence. The Nigerian High Commission has issued [grave](#)

[concerns](#) regarding the victimization of its nationals, while Ghana has taken the proactive step of authorizing the [evacuation of 300](#) citizens. This "Afrophobia" highlights the failure of the "Ubuntu" philosophy in the face of 30% unemployment in the continent's most industrialized economy. Domestically, the Nigerian government is attempting to project "Rule of Law" through the sentencing of former Minister of Power Sale Mamman to [75 years in prison](#) for massive money laundering, yet it struggles with basic service delivery, as evidenced by the [total darkness](#) reported across the Isoko nation for over a decade.

MAJOR DEVELOPMENTS

US-China Summitry and Economic Rivalry

- President Trump's visit to Beijing, which includes [Nvidia CEO Jensen Huang](#) in the delegation, focuses on resolving the "semiconductors" flashpoint and stabilizing trade [impacted by tariffs](#).
- China has reaffirmed its [One China principle](#) ahead of talks regarding Taiwan and the broader US-China technological competition.

South African Xenophobic Crisis

- The Nigerian High Commission reiterated concerns over [violence prone marches](#) targeting foreign entrepreneurs who contribute capital to the South African economy.
- Ghana's Ministry of Foreign Affairs confirmed [presidential approval](#) for the repatriation of distressed citizens, including students and documented workers.

The Fall of Sale Mamman

- Justice James Omotosho sentenced the former Minister of Power to [75 years in jail](#) for laundering 33.8 billion Naira linked to the Zungeru and Mambilla power projects.
- The court ordered the [final forfeiture](#) of choice properties in Abuja and assets in different currencies recovered from the convict.

UK Political Instability

- King Charles III delivered the government's legislative agenda amidst a [volatile world](#) threatening the UK's energy and defense security.
- Opposition Leader Kemi Badenoch claimed PM Starmer is [in office but not in power](#) following the resignation of four ministers.

Plateau State Security Escalation

- Governor Caleb Mutfwang issued a [shoot on sight](#) directive against individuals found destroying farmlands, labeling them enemies of the state.
- The state is imposing [tougher security measures](#), including a ban on night grazing and night mining, to address persistent communal attacks.

KEY GOVERNANCE TOPICS

Critical Infrastructure & Energy Security

Communities in Delta State's Isoko nation have been [without power for 10 years](#), highlighting a disconnect between oil-producing regions and national grid benefits. Simultaneously, Nigeria and Morocco are finalizing a [2026 intergovernmental agreement](#) for the \$25 billion Atlantic gas pipeline, illustrating a focus on large-scale

export infrastructure over domestic utility maintenance. Further, Nigeria continues to [fall short of OPEC](#) production quotas, extending a streak of underperformance that threatens budget targets.

Economic Security & Resilience High interest rates (MPR 26.5%) are driving Nigerian corporates toward the [commercial paper market](#), with 600 billion Naira raised in Q1 2026 as an alternative to expensive bank loans. Meanwhile, the average salaried Nigerian is reportedly [financially stressed](#), with savings plummeting to roughly 1% of income as inflation maintains a [faster pace](#) of 4.18% month-on-month.

Labor & Health Governance Nigeria faces a [severe shortage of nurses](#), with a patient ratio of 1:1,160 compared to the WHO recommendation of 1:120. Over [75,000 nurses migrated](#) from Nigeria in the last five years due to poor remuneration and working conditions, leading to "International Nurses Day" being marked by calls for urgent reform rather than celebration.

Diplomatic Engagement & Regional Influence French President Emmanuel Macron's arrival in [Addis Ababa](#) and Nairobi reflects a strategic pivot toward Anglophone Africa as French influence [waned in its traditional](#) Francophone colonies. This "New Approach" is met with skepticism by some activists who label it [French imperialism](#) rather than pan-Africanism.

LEGISLATIVE ROUNDUP

Legislative activity centered on the UK's **King's Speech**, which outlined reforms to the NHS, immigration, and infrastructure, alongside the Nigerian **Ministry of Education's** new dual-mandate policy for tertiary institutions.

BILLS DISCUSSED/DEBATED:

- **UK Infrastructure and Security Bills:** Legislation to expand airports and [strengthen ties](#) with the EU and NATO.
- **Nigerian Digital Switch Over (DSO):** The government announced the [June 17 launch](#) of a digital cable satellite providing 100 channels to Sub-Saharan Africa.
- **Electoral Act Amendment:** Debates continue over Section 77, aiming to [criminalize dual membership](#) in political parties to curb "political shenanigans."

HEARINGS & PRESS EVENTS:

- **International Nurses Day Briefing:** The National Association of Nurses and Midwives warned of a [pressure on hospitals](#) due to manpower shortages.
- **Plateau State Security Council:** Governor Mutfwang's briefing on land grabbing and [shoot on sight](#) orders.
- **Policy Meeting on Education:** Minister Tunji Alausa explained the [dual mandate](#) allowing Colleges of Education to award Bachelor's degrees.

DEEP DIVE: TRENDS AND THEMES

The Collapse of the "Ubuntu" Consensus

The escalating tension between South Africa and its northern neighbors (Nigeria, Ghana) signifies the death of the "Post-Apartheid Solidarity" narrative. While elites in the Nigeria-South Africa Chamber of Commerce call for [more education](#) and focus on historical ties, the "masses" are driven by immediate [socio-economic challenges](#). The threat of "reprisal attacks" mentioned by industry veterans like Pete Edochie suggests that if the South African government does not [act](#)

[decisively](#), the conflict could spill over into attacks against South African corporate interests (MTN, Multichoice) in Nigeria.

Lawfare as an Instrument of Stability

The Nigerian judiciary is being leveraged to demonstrate state capacity through high-profile anti-corruption convictions. Sentencing Sale Mamman [in absentia](#) is a performative act of justice intended to appease a populace frustrated by [prolonged blackouts](#) and economic hardship. However, the [inconsistency in court rulings](#) regarding political party primaries (e.g., the ADC and PDP cases) undermines the perceived impartiality of the Rule of Law.

The Geopolitics of "Pivoting"

Both France and the United States are engaged in aggressive "pivoting." President Trump's visit to Beijing is a pragmatic [diplomatic guiding role](#) to prevent decoupling, while President Macron's "Future Forward" summit in Kenya is an [attempt to reposition](#) France away from its failing Sahelian military strategies. This demonstrates a shift toward more transactional, trade-based relationships where Africa is seen as a [beautiful bride](#) in the new multi-polar order.

STRATEGIC FORESIGHT

Short Term (1-4 Weeks): Expect diplomatic friction between Pretoria, Abuja, and Accra as [repatriation flights](#) for Ghanaian citizens begin. In Nigeria, the "shoot on sight" order in Plateau could lead to increased reports of [human rights violations](#) or a temporary lull in farm-related violence. The UK may see a [leadership challenge](#) against Keir Starmer if the healthcare strike in Akwa Ibom or similar labor unrest elsewhere gains momentum.

Medium Term (1-6 Months): The launch of the [Digital Switch Over](#) in June will be a key

test of the Nigerian government's ability to manage media and advertising data. If US-China talks fail to resolve semiconductor restrictions, expect [Nvidia](#) and other tech firms to face significant supply chain disruptions. The [600 billion Naira bond](#) auction will reveal the true extent of investor confidence in Nigeria's debt management.

Long Term (1-5 Years): The \$25 billion [Nigeria-Morocco pipeline](#) could fundamentally reorient West African energy exports toward Europe, bypassing traditional sea routes. Structural [nurse shortages](#) will likely lead to a catastrophic collapse in rural healthcare delivery in Nigeria unless radical wage reforms are implemented. Structural changes to the US-China relationship may solidify a [bipolar world](#) where tech-sovereignty is the primary measure of power.

RECOMMENDATIONS & IMPLICATIONS

For International Policy:

- The AU must mediate the South Africa-Nigeria-Ghana rift to prevent a [reprisal attack](#) cycle that would destabilize the African Continental Free Trade Area (AfCFTA).
- Diplomatic missions should prepare for a period of [UK political paralysis](#), which may delay NATO and EU-related negotiations.
- Global climate policy must account for the [87% crop land damage](#) in conflict zones like Gaza, which mirrors environmental degradation in the Sahel.

For Private Sector/Investors:

- **Regulatory Compliance:** Investors in the Nigerian power sector must conduct rigorous due diligence following the [Sale Mamman conviction](#), as legacy corruption remains a high legal risk.
- **Supply Chain Risk:** The [closure of the Strait of Hormuz](#) and tension in Iran continue to inflate energy and shipping costs for German and global exporters.
- **Investment Opportunity:** The surge in the [commercial paper market](#) offers a 20-23% yield for institutional investors willing to navigate Nigeria's high-inflation environment.

ABOUT THIS REPORT

Today's Media Trends is a public interest experiment in applying deep thematic trend analysis to television news coverage from around the world to explore how responsibly applied advanced AI can help journalists and scholars better understand the overarching trends, themes and patterns of our global world.

No data is used to train or tune any AI model.

Each morning, in collaboration with the Internet Archive's TV News Archive, we apply Google's Gemini 3 to deeply examine yesterday's coverage from each television news channel to tease out the overarching themes and trends of its news coverage into a richly annotated thematic analysis. Each high-level insight is connected back to the original broadcast, allowing journalists and scholars to understand the dominate themes and trends and instantly click out to the underlying sources for details.

By helping journalists and scholars see the broader trends and patterns of global news coverage, this analysis helps them identify relevant stories and coverage they might not otherwise have encountered and uncover connections, emphases and narrative shifts that enable more comprehensive reporting and deeper, evidence-based research.

This report is entirely machine generated using Gemini 3 and may include errors and

omissions. Please verify all findings. No data is used to train or tune any AI model.

For questions or suggestions, please contact kalev.leetaru5@gmail.com. You can also learn more about the GDELT Project at <https://blog.gdelproject.org/> and the Internet Archive's TV News Archive at <https://archive.org/details/tv>.