

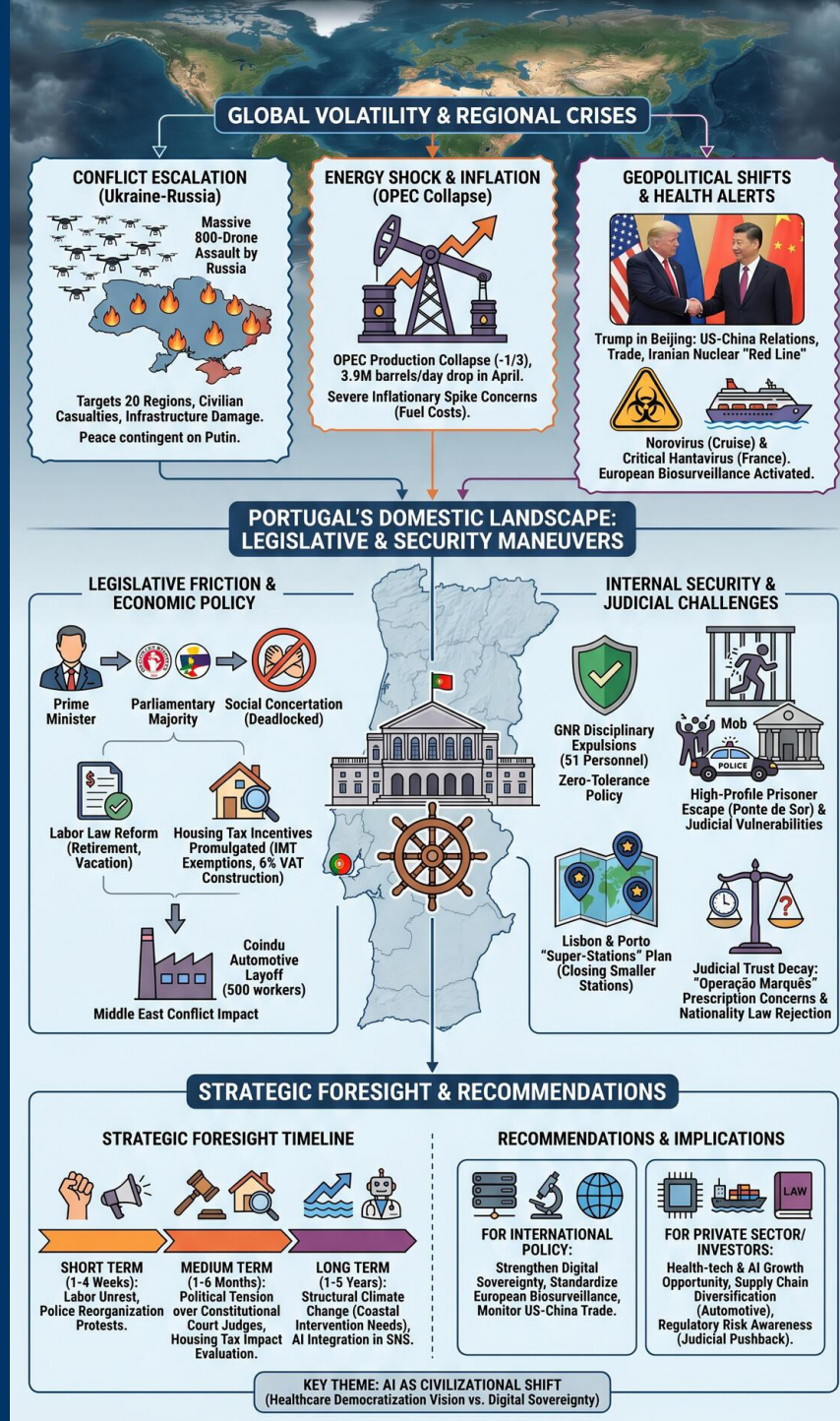
TODAY'S MEDIA TRENDS

RTPI

MAY 13, 2026

THE GDELT PROJECT

PORTUGAL NAVIGATES DOMESTIC LEGISLATIVE FRICTION AMID GLOBAL ENERGY VOLATILITY AND REGIONAL SECURITY CRISES



TODAY'S MEDIA TRENDS

RTPI

MAY 13, 2026

PORTUGAL NAVIGATES DOMESTIC LEGISLATIVE FRICTION AMID GLOBAL ENERGY VOLATILITY AND REGIONAL SECURITY CRISES

DAY-AT-A-GLANCE

On May 13, 2026, Portugal's political landscape centered on the government's push for a [labor law reform](#) proposal, bypassing deadlocked social concertation to seek a parliamentary majority with opposition parties PS and Chega. This legislative maneuvering occurs alongside the promulgation of significant [housing tax incentives](#), aimed at curbing a persistent affordability crisis. Domestically, the security sector is under scrutiny following reports of extensive [GNR disciplinary expulsions](#) and a high-profile [prisoner escape](#) that highlighted critical infrastructure vulnerabilities in judicial facilities. The national mood is further tempered by disappointment as the country failed to qualify for the Eurovision final, an event overshadowed by regional political tensions.

Internationally, the day was marked by a massive escalation in the Ukraine-Russia conflict, with a [800-drone assault](#) by Russia

targeting 20 Ukrainian regions. Simultaneously, a global energy shock emerged as OPEC production [collapsed by one-third](#), driving concerns about a severe inflationary spike. In the diplomatic sphere, Donald Trump's [arrival in Beijing](#) signaled a potential shift in US-China relations, with trade and the Iranian nuclear program topping a high-stakes agenda. Public health authorities remained on high alert following a [norovirus outbreak](#) on a cruise ship and the emergence of a critical [Hantavirus case](#) in France, prompting the activation of European biosurveillance protocols.

MAJOR DEVELOPMENTS

Geopolitical Power Shifts and Conflict Escalation

- Russia launched a massive offensive against Ukraine involving [800 drones](#), resulting in civilian casualties and infrastructure damage across 20 regions. [NATO leadership](#) emphasized that any peace deal remains contingent on Vladimir Putin's willingness to "play ball," which has not yet materialized.
- Donald Trump landed in Beijing for a [three-day visit](#), the first by a US president in nine years, to discuss Taiwan, trade tariffs, and the [Iranian nuclear "red line"](#).
- The 13th of May pilgrimage in Fátima drew [250,000 people](#), where the Patriarch of Lisbon delivered a message focused on global peace amid ongoing regional wars.

Portuguese Domestic Policy and Legislative Friction

- The Prime Minister announced a parliamentary push for [labor law revisions](#) after the failure of social concertation, seeking specific support from Chega and PS for points like retirement age and vacation time.
- The President of the Republic promulgated a [tax relief package](#) for housing, including IMT exemptions for first-time buyers and a reduced 6% VAT rate on construction.
- The [Coindu automotive plant](#) in Famalicão announced a layoff affecting nearly 500 workers, citing the impact of Middle East conflicts and a decline in global orders.

Internal Security and Judicial Integrity

- The GNR commander revealed the expulsion of [51 military personnel](#) over four years for misconduct, emphasizing a zero-tolerance policy for human rights violations.
- A dangerous [prisoner escaped](#) from the Ponte de Sor court during an interrogation, aided by a mob that surrounded police, highlighting [security deficiencies](#) in judicial buildings.
- The Minister of Internal Administration announced a plan to [close smaller police stations](#) in Lisbon and Porto to create "super-stations" and increase street patrols.

KEY GOVERNANCE TOPICS

AI and Technology Policy: Virgílio Bento, founder of Sword Health, outlined a vision where [AI democratizes healthcare](#) access,

comparing its societal impact to the invention of electricity. However, analysts warned of the need for [digital sovereignty](#) to ensure European states maintain control over their data and decision-making models.

Economic Security: Despite inflation accelerating to [3.3% in April](#) due to fuel costs, Finance Minister Miranda Sarmiento projected a significant [debt reduction](#) to 85-86% of GDP, which would be among the largest in the EU.

Biosurveillance and Disease Outbreaks: European health agencies activated emergency protocols following a [norovirus outbreak](#) in Bordeaux affecting 1,700 people and a critical [Hantavirus infection](#) in France. Portugal's DGS classified the domestic risk as [very low](#) but established hospital references in Lisbon and Porto for potential cases.

Energy Security: A record [collapse in oil extraction](#)—a drop of 3.9 million barrels per day—was reported in April. The European Commission warned that the current crisis is a [broad energy shock](#) exacerbated by the conflict in the Middle East.

Corruption and Rule of Law: The long-delayed trial in the "[Operação Marquês](#)" case against former PM José Sócrates drew criticism from the Justice Minister, who noted that any case ending in [prescription signals a system failure](#).

LEGISLATIVE ROUNDUP

The Portuguese government is moving toward a decisive phase in its reform agenda, shifting focus from social dialogue to parliamentary negotiation to ensure stability for its flagship proposals.

BILLS DISCUSSED/DEBATED:

- **Labor Law Reform:** A proposal to revise the labor code, focusing on [flexible working hours](#), retirement ages, and vacation policies. The government is seeking parliamentary support after labor unions remained [inflexible](#).
- **Housing Tax Package:** Promulgated measures providing [IMT exemptions](#) for youth and reduced VAT for construction aimed at middle-class housing.
- **Nationality Law:** The Constitutional Court unanimously [rejected the proposal](#) to revoke nationality for certain crimes, citing a violation of the principle of equality.
- **Court Security Portaria:** A pending regulation to [remunerate court-appointed lawyers](#) earlier in the process to prevent financial strain.

HEARINGS & PRESS EVENTS:

- **Prime Minister Meeting with Mayors:** Announced a [400-officer reinforcement](#) for the PSP in Lisbon and Porto by year-end.
- **Sword Health "Primeira Pessoa" Interview:** Virgílio Bento discussed the [scale-up of AI](#) in clinical settings and the \$4 billion valuation of his health-tech firm.
- **Constitutional Court Resignation:** President José João Abrantes announced his [resignation](#), citing personal reasons and the need for institutional stability during a period of judicial turnover.

DEEP DIVE: TRENDS AND THEMES

The AI Transition: Beyond the Internet

A significant narrative emerging is that AI represents a fundamental [civilizational shift](#) rather than a mere technological iteration. Experts argue that while the US and China have adopted national strategies for AI dominance, Europe is lagging. The trend suggests that AI will eventually manage [50% of healthcare problems](#) within the next few years, potentially solving chronic efficiency issues in systems like Portugal's SNS.

The Decay of Judicial and Public Trust

Public trust in the rule of law is facing a "perfect storm." The combination of [prescriptions in high-level corruption cases](#) (Sócrates), [violent prisoner escapes](#), and the [rejection of popular but unconstitutional laws](#) (Nationality Law) creates a narrative of institutional impotence. This is being exploited by populist factions calling for [national referendums](#) to bypass constitutional constraints.

Geopolitics of Energy and Trade

The [collapse of oil production](#) and the fuel-driven [inflation acceleration](#) underscore Portugal's vulnerability to Middle Eastern and Eastern European conflicts. The automotive sector, a major employer, is already seeing the fallout through [layoffs at Coindu](#). This trend points toward a broader industrial slowdown in Portugal if global supply chains remain fractured.

STRATEGIC FORESIGHT

Short Term (1-4 Weeks): Expect a [general strike](#) or increased labor unrest as unions respond to the government's move to push labor reforms through Parliament without concertation agreement. The [reorganization of police stations](#) in urban centers may spark

local community protests over reduced visibility.

Medium Term (1-6 Months): Political tension will rise around the [election of four new judges](#) to the Constitutional Court, with Chega and PS likely to use the appointments as leverage in broader budget negotiations. The [housing tax breaks](#) will begin to show whether they effectively lower entry prices for youth or are merely absorbed by market price increases.

Long Term (1-5 Years): Structural [climate change impacts](#) in Madeira and coastal Portugal, including sea-level rise and a 2-5 degree temperature increase, will necessitate massive [coastal intervention investments](#), far exceeding current budgets. AI integration will likely become a [core component of the SNS](#), fundamentally altering the medical workforce's composition.

RECOMMENDATIONS & IMPLICATIONS

For International Policy:

- Strengthen [digital sovereignty](#) frameworks to protect critical decision-making models from foreign corporate or state dependencies.
- Coordinate [European biosurveillance](#) to standardize responses to localized outbreaks like the Bordeaux gastrointestinal crisis.
- Monitor [US-China trade negotiations](#) closely, as any new tariffs will directly impact the cost of components for the Portuguese industrial sector.

For Private Sector/Investors:

- **Investment Opportunity:** High growth potential in [health-tech and AI solutions](#) that address the specific inefficiencies of Southern European public services.
- **Supply Chain Risk:** The [layoffs at Coindu](#) signal a cooling in the automotive supply chain; diversification of clients away from conflict-exposed regions is advised.
- **Regulatory Risk:** The [Nationality Law rejection](#) indicates that investors should expect continued judicial pushback on controversial "security-first" legislative packages.

ABOUT THIS REPORT

Today's Media Trends is a public interest experiment in applying deep thematic trend analysis to television news coverage from around the world to explore how responsibly applied advanced AI can help journalists and scholars better understand the overarching trends, themes and patterns of our global world.

No data is used to train or tune any AI model.

Each morning, in collaboration with the Internet Archive's TV News Archive, we apply Google's Gemini 3 to deeply examine yesterday's coverage from each television news channel to tease out the overarching themes and trends of its news coverage into a richly annotated thematic analysis. Each high-level insight is connected back to the original broadcast, allowing journalists and scholars to understand the dominate themes and trends and instantly click out to the underlying sources for details.

By helping journalists and scholars see the broader trends and patterns of global news coverage, this analysis helps them identify relevant stories and coverage they might not otherwise have encountered and uncover connections, emphases and narrative shifts that enable more comprehensive reporting and deeper, evidence-based research.

This report is entirely machine generated using Gemini 3 and may include errors and

omissions. Please verify all findings. No data is used to train or tune any AI model.

For questions or suggestions, please contact kalev.leetaru5@gmail.com. You can also learn more about the GDELT Project at <https://blog.gdeltproject.org/> and the Internet Archive's TV News Archive at <https://archive.org/details/tv>.