

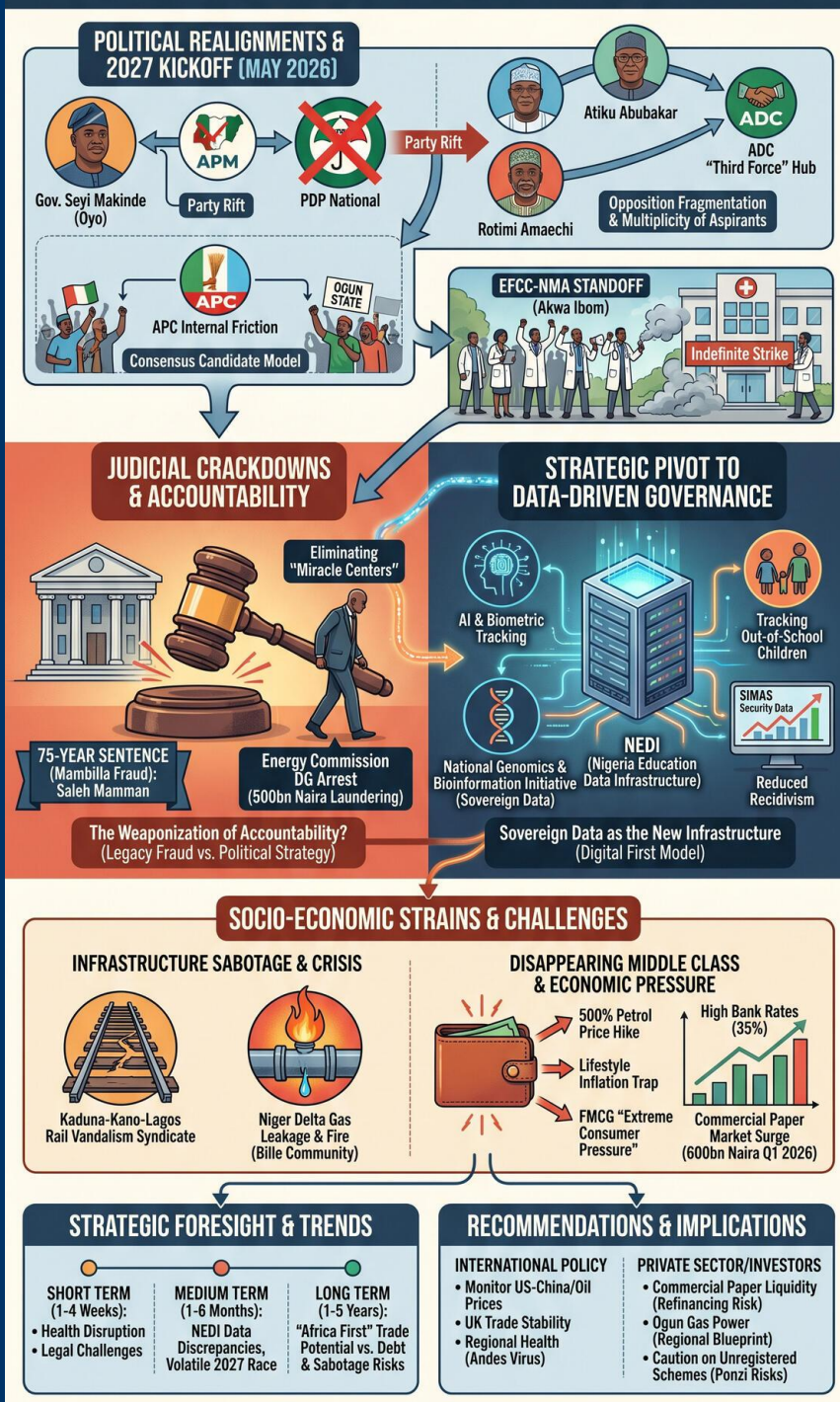
TODAY'S MEDIA TRENDS

CHANNELSTV

MAY 14, 2026

THE GDELT PROJECT

NIGERIA 2027 POLITICAL REALIGNMENT COMMENCES AMID JUDICIAL CRACKDOWNS & STRATEGIC PIVOT TO DATA-DRIVEN GOVERNANCE



TODAY'S MEDIA TRENDS

CHANNELSTV

MAY 14, 2026

NIGERIA 2027 POLITICAL REALIGNMENT COMMENCES AMID JUDICIAL CRACKDOWNS AND STRATEGIC PIVOT TO DATA-DRIVEN GOVERNANCE

DAY-AT-A-GLANCE

May 14, 2026, marked a decisive escalation in Nigeria's domestic political landscape as the 2027 electoral cycle effectively began with multiple high-stakes presidential declarations and significant shifts in party allegiances. Governor Seyi Makinde of Oyo State officially declared his [presidential ambition](#) through a contentious alliance with the Allied People's Movement (APM), a move immediately disavowed by the national leadership of the People's Democratic Party (PDP). Simultaneously, the African Democratic Congress (ADC) emerged as a potential "Third Force" hub, receiving nomination forms from heavyweight aspirants including former Vice President Atiku Abubakar and former Rivers State Governor Rotimi Amaechi, signaling a fragmenting opposition strategy against the ruling All Progressives Congress (APC).

Governance and judicial developments provided a counter-narrative of systemic

reform and accountability. The Federal High Court delivered a landmark [75-year jail sentence](#) to former Power Minister Saleh Mamman for a 33.8 billion Naira fraud related to the Mambilla power project, while the Energy Commission's Director General was arrested for an alleged 500 billion Naira money laundering scheme. These judicial actions coincided with the launch of the Nigeria Education Data Infrastructure (Nedi), a centralized system designed to eliminate "miracle centers" and track [out-of-school children](#) through immutable identification numbers, representing a major push toward digital sovereignty and evidence-based governance.

Internationally, President Bola Tinubu leveraged the Africa CEO Forum in Kigali to emphasize youth restlessness as a [political risk](#) for failing administrations and to advocate for "Africa First" trade policies. However, domestic stability remains threatened by a growing rift between security agencies and critical social sectors, exemplified by a statewide strike of medical doctors in Akwa Ibom following an [EFCC invasion](#) of a teaching hospital. This friction, combined with infrastructure sabotage and a worsening gas leakage crisis in the Niger Delta, underscores the precarious balance between aggressive enforcement and social order.

MAJOR DEVELOPMENTS

- **Kickoff of the 2027 Presidential Race:** Governor Seyi Makinde declared his candidacy, while Atiku Abubakar and Rotimi Amaechi moved toward the ADC, creating a [multiplicity of aspirants](#) that could dilute opposition strength. The PDP center-state rift deepened as the national body called Makinde's alliance an [impersonation of the party](#).
- **High-Level Judicial Accountability:** The sentencing of former Minister Saleh Mamman to [75 years in prison](#) for the Mambilla fraud marks one of the most significant convictions of a former cabinet member. This was followed by the [arrest of the DG](#) of the Energy Commission over a 500 billion Naira laundering allegation.
- **Strategic Launch of Nedi:** The Ministry of Education unveiled the [Nigeria Education Data Infrastructure](#), integrating AI and biometric tracking to manage 24,000 schools and millions of learners, aiming to end decades of "flying blind" in policy planning.
- **EFCC-NMA Standoff:** Medical doctors in Akwa Ibom State embarked on an [indefinite strike](#) after EFCC operatives allegedly fired shots and teargas in the University of Uyo Teaching Hospital while attempting to arrest a senior consultant.
- **Vandalism and Infrastructure Sabotage:** A major syndicate was dismantled in Kaduna for [vandalizing rail components](#) of the Kaduna-Kano-Lagos line, with components worth billions recovered from a steel company used as a front.

KEY GOVERNANCE TOPICS

Elite Politics & Leadership Dynamics:

- The 2027 race is characterized by a "Third Force" realignment as heavyweight defectors from the PDP and APC converge on the ADC and NNPP. [Rotimi Amaechi and Atiku Abubakar](#) are positioning themselves as alternatives to the current administration.
- Internal APC friction is rising over the [consensus candidate model](#), with retired military officers and sitting senators in Ogun State protesting against perceived impositions by state governors.

Technology Policy & Digital Sovereignty:

- The launch of Nedi and the [National Genomics and Bioinformation](#) initiative indicates a state-wide strategy to own and secure indigenous data. Nedi aims to track student transitions from [primary to tertiary levels](#) to align education with labor market needs.
- Security agencies are increasingly using [data-driven surveillance](#) (SIMAS) to reduce recidivism in correctional centers, reporting a drop from 1,300 to 1,200 incidents.

Corruption & Rule of Law:

- The judiciary is demonstrating increased aggression toward "legacy fraud" cases. The [Saleh Mamman conviction](#) is seen as a message to current officials, though critics remain skeptical of the political motivations behind selective prosecutions.
- NDIC and the National Judicial Institute are collaborating to [sensitize judges](#) on bank liquidation and depositor protection to stabilize the financial system.

Energy Security & Infrastructure:

- Ogun State is moving toward [energy independence](#) with the inspection of a 4MW gas power plant and the establishment of its own electricity regulatory commission.
- Critical infrastructure in the Niger Delta faces [environmental and safety crises](#), with prolonged gas leakages and fire outbreaks in the Bille community disrupting local livelihoods.

Economic Security & Investment Climate:

- FMCG companies (Nestle, Cadbury, Guinness) report [resilient Q1 earnings](#) but warn of extreme consumer pressure due to 15.38% month-on-month energy price spikes. Nestle's profit growth was largely driven by [debt management and finance income](#) rather than volume increases.
- The commercial paper market has seen [600 billion Naira](#) raised in Q1 2026 as corporates bypass high bank lending rates (up to 35%) for more favorable terms.

LEGISLATIVE ROUNDUP

Legislative and policy discussions focused on the implementation of the 2022 Electoral Act and the development of new frameworks for subnational data governance. Debates emerged regarding the constitutionality of party "consensus" and the [dual membership](#) of political actors, with civil society calling for clearer sanctions in the evolving Electoral Act.

HEARINGS & PRESS EVENTS:

- **Nedi Stakeholders Workshop:** Attended by the Ministers of Education, Interior, and Women Affairs, the event detailed the [regulatory and technical framework](#) for the new education database.
- **Oyo Unity Rally:** A political event where Governor Makinde announced a [formal MOU](#) between the PDP in the Southwest and the APM, effectively challenging the national PDP leadership's control.
- **Lagos Health Briefing:** Commissioner Akin Abayomi disclosed a [shortfall of 30,000 doctors](#) in Lagos, calling for the establishment of a standalone University of Medicine to combat "brain drain."

DEEP DIVE: TRENDS AND THEMES

The Weaponization of Accountability: The back-to-back sentencing of Saleh Mamman and the arrest of the Energy Commission DG suggest a trend of using anti-corruption agencies to clean up past administrations' "legacy debts." However, the [selective nature](#) of these prosecutions, particularly as the 2027 race begins, suggests that judicial outcomes may be increasingly intertwined with political strategic needs. The use of "absentia" sentencing indicates a more aggressive posture by the judiciary in dealing with fugitives of the state.

Sovereign Data as the New Infrastructure: The convergence of the Nedi launch, the Sovereign Genomics initiative, and the digital tracking of [national assets](#) reveals a shift in state capacity from physical projects to digital oversight. The administration appears to be betting that [data integrity](#) will resolve deep-seated issues like "miracle

centers" and subsidy fraud. This "Digital First" governance model seeks to replace traditional patronage networks with algorithmic accountability, though its success depends on subnational adoption and [data credibility](#) at the local level.

The Disappearing Middle Class: A recurring theme is the [wealth crisis](#) among Nigerian professionals. Despite high earnings, middle-class households are being liquidated by a "lifestyle inflation" trap combined with 500% increases in [petrol prices](#) and higher tax enforcement. Professionals are increasingly [refinancing their debt](#) through commercial papers or adjusting to "stay-vacations," signaling a contraction in domestic consumer demand that could affect long-term GDP growth.

STRATEGIC FORESIGHT

Short Term (1-4 Weeks): Expect continued disruption in the health sector as the NMA strike in Akwa Ibom could [spread to other states](#) if the EFCC does not issue a formal apology and protocol for medical facility operations. In politics, more legal challenges are likely to be filed against the [PDP and ADC](#) as factions dispute the validity of new alliances.

Medium Term (1-6 Months): The implementation of Nedi will likely reveal significant discrepancies in [out-of-school numbers](#), leading to a reallocation of international development funding. The 2027 race will enter a more volatile phase as "consensus" candidates within the APC and PDP face [grassroots rebellion](#).

Long Term (1-5 Years): If the "Africa First" trade initiatives discussed in Kigali [materialize](#), Nigeria could significantly reduce its 68 billion Naira annual bill for importing

concentrates and other raw materials. However, if infrastructure sabotage and [rail vandalism](#) are not curbed by the new data-driven security models, the cost of national debt servicing will likely exceed the benefits of revenue generation.

RECOMMENDATIONS & IMPLICATIONS

For International Policy:

- The US-China meeting in Beijing regarding the [Iran war](#) and the Strait of Hormuz will have immediate impacts on Nigerian oil premiums. Diplomats should monitor for shifts in [global energy prices](#) that could provide a windfall or a crash for the Nigerian budget.
- The UK's internal political instability following the [West Streeting resignation](#) may affect bilateral trade agreements, particularly those related to the 8 billion pound trade volume target.
- The [Andes virus outbreak](#) in South Africa requires immediate regional health coordination to prevent a wider continental epidemic.

For Private Sector/Investors:

- The [Commercial Paper market](#) remains the most viable short-term liquidity tool for Nigerian corporates, though investors must scrutinize the "refinancing risk" of firms heavily reliant on this market as interest rates remain elevated.
- Ogun State's pivot to [gas-fired power plants](#) offers a blueprint for regional industrial clusters. Investors should look for opportunities in state-led electricity regulatory frameworks.

- Retail investors should exercise caution with [unregistered online schemes](#) on social media, which the SEC has flagged as increasingly sophisticated Ponzi operations.

ABOUT THIS REPORT

Today's Media Trends is a public interest experiment in applying deep thematic trend analysis to television news coverage from around the world to explore how responsibly applied advanced AI can help journalists and scholars better understand the overarching trends, themes and patterns of our global world.

No data is used to train or tune any AI model.

Each morning, in collaboration with the Internet Archive's TV News Archive, we apply Google's Gemini 3 to deeply examine yesterday's coverage from each television news channel to tease out the overarching themes and trends of its news coverage into a richly annotated thematic analysis. Each high-

level insight is connected back to the original broadcast, allowing journalists and scholars to understand the dominate themes and trends and instantly click out to the underlying sources for details.

By helping journalists and scholars see the broader trends and patterns of global news coverage, this analysis helps them identify relevant stories and coverage they might not otherwise have encountered and uncover connections, emphases and narrative shifts that enable more comprehensive reporting and deeper, evidence-based research.

This report is entirely machine generated using Gemini 3 and may include errors and omissions. Please verify all findings. No data is used to train or tune any AI model.

For questions or suggestions, please contact kalev.leetaru5@gmail.com. You can also learn more about the GDEL Project at <https://blog.gdelproject.org/> and the Internet Archive's TV News Archive at <https://archive.org/details/tv>.