

TODAY'S MEDIA TRENDS

CHANNELSTV

MAY 16, 2026

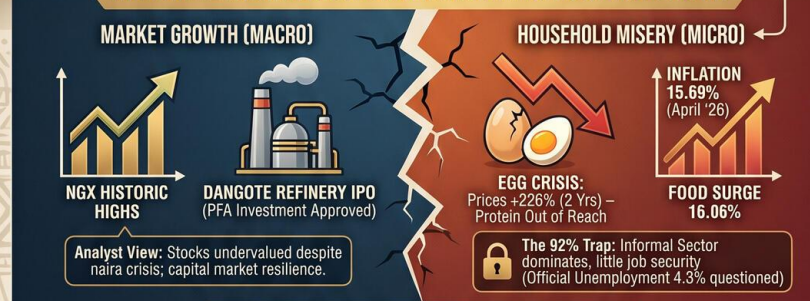
T H E G D E L T P R O J E C T

NIGERIA: STRATEGIC STABILITY THROUGH HIGH-PROFILE WINS & RE-ENGAGEMENT AMIDST DOMESTIC STRAIN

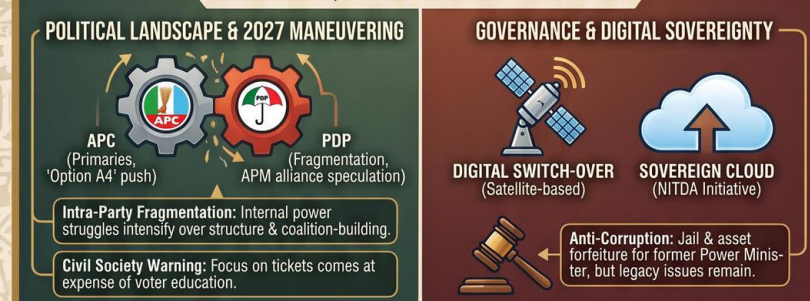
A Visual Explainer of May 2026 Report Findings & Trends.



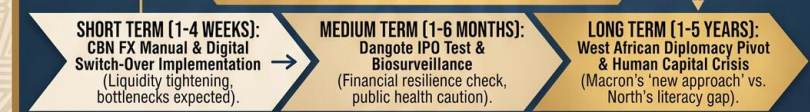
THE CORE TENSION: MACROECONOMIC GROWTH VS. HOUSEHOLD MISERY



GOVERNANCE, POLITICS & THE PATH FORWARD



STRATEGIC FORESIGHT & RECOMMENDATIONS



KEY IMPLICATIONS (POLICY & INVESTORS)

- International:** Prioritize intel-sharing (verify targets); Adjust risk models for African credit agency push.
- Private Sector:** Align with Sovereign Cloud; Invest in agri-supply chain logistics; Monitor Dangote IPO for FDI appetite.

TODAY'S MEDIA TRENDS

CHANNELSTV

MAY 16, 2026

NIGERIA PROJECTS STRATEGIC
STABILITY THROUGH HIGH-
PROFILE SECURITY WINS AND
INTERNATIONAL RE-ENGAGEMENT
AMIDST DEEPENING DOMESTIC
ECONOMIC STRAIN

DAY-AT-A-GLANCE

May 16, 2026, was defined by a concerted effort by the Tinubu administration to project an image of regional leadership and security competence, punctuated by the high-profile elimination of ISIS leader Abu Bilal al-Manuki in a joint operation with the United States. This development, heavily praised by both President Tinubu and U.S. President Donald Trump, serves as a [significant milestone in Nigeria's security partnership](#) with Washington. However, the victory was immediately met with skepticism as critics and legal experts pointed to 2024 military reports claiming the same leader had been neutralized previously, forcing the Defense Headquarters (DHQ) to issue clarifications regarding the [practice of terrorists adopting identical names](#) to shield their true identities.

Simultaneously, President Tinubu utilized the Africa CEO Forum in Kigali and the Africa

Forward Summit in Nairobi to market Nigeria's economic reforms to global investors, advocating for a [new financial architecture](#) that reduces Africa's borrowing costs. Despite this international posturing, domestic data reveals a widening gap between state narrative and citizen reality. Inflation hit a five-month high of 15.69%, with food prices surging to 16.06%, effectively [pricing critical protein like eggs](#) out of reach for vulnerable households. The day also saw the convergence of high-culture and politics as the 12th African Magic Viewers Choice Awards (AMVCA) spotlighted Nigeria's soft power, while undercurrents of 2027 election maneuvering intensified within the APC and PDP over primary structures and potential [coalition-building with the APM](#).

MAJOR DEVELOPMENTS

Elimination of ISIS Leader Abu Bilal al-Manuki

- The Nigerian Armed Forces, in a joint precision strike with U.S. partners, killed the global ISIS second-in-command in the Lake Chad Basin. [President Trump praised the "flawlessly executed"](#) mission, while Tinubu framed it as a heavy blow to the Islamic State West Africa Province (ISWAP) hierarchy.
- Controversy emerged regarding the identity of the target; Senior Advocate Femi Falana noted that military records [claimed al-Manuki was killed in 2024](#). The DHQ responded by stating the name is a "core component" of the ISWAP identity-shielding program.

- The operation highlights a deepening of military-intelligence ties between the Tinubu and Trump administrations, likely aimed at stabilizing the Sahel corridor. [Multi-source intelligence confirmation](#) was cited to distinguish this strike from previous "mistaken identity" reports.

Macroeconomic Divergence: Market Growth vs. Household Misery

- The Nigerian Exchange (NGX) maintains historic highs, with analysts suggesting [stocks remain undervalued](#) despite the naira crisis. PenCom has approved Pension Fund Administrators (PFAs) to invest in the upcoming Dangote Refinery IPO.
- National Bureau of Statistics (NBS) data shows [inflation rose to 15.69% in April](#), driven by energy and food costs. Skepticism remains regarding the official unemployment rate of 4.3%, as 92.3% of the workforce is [trapped in the informal sector](#) with no job security.
- The "egg crisis" has become a symbol of food insecurity, with prices rising 226% over two years, resulting in Nigerians [consuming far below the global average](#) for essential proteins.

"Africa First" Diplomatic Offensive

- At the Africa Forward Summit in Nairobi, French President Emmanuel Macron pledged 23 billion euros in investment, framing the engagement as a ["partnership of equals"](#) and supporting a shift from raw material extraction to production hubs.

- President Tinubu advocated for an [African credit rating agency](#) to challenge the dominance of the "Big Three" (Fitch, S&P, Moody's), which many African leaders blame for high borrowing costs.
- There is a growing push for a [Nigeria-Africa Summit](#) to leverage Nigeria's "soft power" (Nollywood/Afrobeats) and financial institutions to lead regional integration.

2027 Election Preparation and Intra-Party Fragmentation

- The APC conducted House of Representatives primaries across several states, with Governor Hope Uzodinma and others [praising the "Option A4" direct primary system](#) as a means of ensuring grassroots legitimacy.
- Speculation regarding an alliance between the PDP and the Allied People's Movement (APM) intensified, though FCT Minister Nyesom Wike [dismissed the rumors as "dead on arrival"](#) and criticized Governor Seyi Makinde's perceived presidential ambitions.
- Critics within civil society warn that the [focus on party tickets](#) is coming at the expense of voter education and addressing the needs of the "forgotten voter."

Internal Security Failures and Infrastructure Risk

- A building collapse in the Durumi area of Abuja [claimed five lives](#), highlighting chronic failures in soil testing, integrity checks, and building approval processes in the Federal Capital Territory.

- Mass kidnappings continue in the North and Southwest, with students [abducted from schools in Borno and Oyo](#), raising questions about the effectiveness of the "Safe Schools Initiative."

KEY GOVERNANCE TOPICS

Technology Policy & Digital Sovereignty

The National Broadcasting Commission (NBC) has fixed a firm date for a [nationwide digital switch-over \(DSO\)](#) rollout within one month, utilizing satellite technology to bypass terrestrial infrastructure gaps. Simultaneously, NITDA is pushing a ["Sovereign Cloud" initiative](#) to ensure data self-determination and protect startups from currency volatility in cloud pricing.

Terrorism & Security Architecture The joint US-Nigeria operation against al-Manuki signifies a pivot toward [high-precision, intelligence-driven strikes](#). However, the practice of "name recycling" by ISWAP and Boko Haram continues to complicate the verification of tactical successes. The Nigerian Army is also intensifying [fixed-wing pilot training](#), including its first female pilot, to improve air-to-ground integration.

Corruption & Governance A Federal High Court in Abuja ordered the [jailing of former Minister of Power Sale Mamman](#) and the forfeiture of assets worth millions in foreign currency and property, following his complicity in the illegal diversion of funds intended for the Mambilla hydroelectric project. The court lamented the [lack of a lasting legacy](#) in the power sector under his tenure.

Investment Climate Despite the inflationary environment, the [NGX remains a top global performer](#). The Central Bank's launch of the 4th edition of the Foreign Exchange Manual,

effective June 1, 2026, aims to improve [transparency and compliance](#) in a market historically marred by volatility and opacity.

LEGISLATIVE ROUNDUP

Governance discourse this week centered on regulatory enforcement in the energy sector, electoral reform, and the financial guidelines of the Central Bank. The House of Representatives focused on [investigating corporate social responsibility](#) failures in the oil sector and regulating gas station placement following explosions.

BILLS DISCUSSED/DEBATED:

- **50-Year National Economic Plan Bill:** Proposed legislation aimed at establishing a [long-term development roadmap](#) to insulate the economy from four-year election cycle disruptions.
- **Special Seat Bill for Women:** Continued agitation for its passage in the National Assembly to [increase female representation](#) in legislative bodies ahead of 2027.
- **Electoral Act 2022 (Primaries):** Ongoing debate over the **Consensus vs. Direct Primary** models, with legal experts noting that [consensus requires written consent](#) from all aspirants to be valid.

HEARINGS & PRESS EVENTS:

- **CBN FX Manual Launch:** The 4th edition was unveiled, prioritizing [ethical behavior and prudent financial practices](#) in the foreign exchange market, set to become operational by June 1, 2026.
- **JAMB Policy Meeting:** Stakeholders fixed [150 as the minimum cut-off mark](#) for university admissions and 100 for polytechnics, while removing UTME requirements for some NCE programs.

- **NBC Press Briefing:** Director General Charles Ebuebu announced the shift to [satellite-based digital broadcasting](#) to ensure 100% signal coverage across Nigeria.

DEEP DIVE: TRENDS AND THEMES

Soft Power vs. Hard Economics Nigeria is increasingly leveraging its cultural dominance to distract from domestic economic hardship. The [glamour of the AMVCA red carpet](#), featuring "edible trains" and "architectural gowns," serves as a stark juxtaposition to reports of citizens [scooping fuel from fallen tankers](#) or struggling to buy bread. While the creative industry represents a viable export, there is a visible tension between the "Nollywood narrative" of success and the [92% informal labor trap](#) that characterizes the real economy.

The Fragmentation of the Opposition The 2027 election is already being fought through "guerrilla warfare" within the political class. The reported [fracturing of the PDP](#) and the emergence of "silent alliances" like the APM/PDP link suggest that the opposition is struggling to find a unified front. FCT Minister Wike's open [dismissal of Governor Makinde's ambitions](#) indicates that the internal power struggle within the PDP remains unresolved, potentially clearing a path for APC dominance if the "Option A4" primary system succeeds in consolidating the ruling party's base.

Technological Nationalism A new trend of "digital self-determination" is emerging in Nigeria's regulatory framework. From the NBC's move to [indigenous satellite signal distribution](#) to NITDA's pursuit of a [sovereign cloud](#), the government is attempting to "on-shore" digital infrastructure. This is driven by

a desire to insulate the economy from [volatile infrastructure costs](#) denominated in dollars and to assert more control over local data, which has significant implications for both cybersecurity and state surveillance.

STRATEGIC FORESIGHT

Short Term (1-4 Weeks): Expect a flurry of activity around the [June 1st implementation of the new CBN FX manual, which could cause temporary liquidity tightening as banks adjust to stricter compliance.](#) The NBC's [digital switch-over deadline](#) will likely trigger a rush for "free-to-air" decoders, potentially exposing supply chain bottlenecks.

Medium Term (1-6 Months): The Dangote Refinery IPO and the subsequent [injection of pension funds](#) will be a critical test for Nigeria's financial resilience. Any delay in the refinery's full-scale operation could undermine investor confidence in the NGX. Additionally, the [repatriation of students](#) and the monitoring of the Andes virus cluster on the MV Hondius suggest a heightened period of biosurveillance and public health caution.

Long Term (1-5 Years): The structural changes in West African diplomacy, particularly Macron's ["new approach" to Francophone and Anglophone Africa](#), may lead to a more balanced trade relationship focused on critical minerals. However, if Nigeria fails to bridge the [literacy and numeracy gaps](#) in the North, the long-term human capital crisis will likely fuel future cycles of insecurity, regardless of tactical military successes against ISIS.

RECOMMENDATIONS & IMPLICATIONS

For International Policy:

- The US-Nigeria joint operation confirms that Nigeria is the [strategic "trigger"](#) for Sahelian security; partners should prioritize intelligence-sharing and verify target identities to maintain public trust.
- Macron's pivot suggests that [Nairobi and Abuja](#) are the new axes of French-African engagement, moving away from traditional colonial structures.
- The push for an [African credit rating agency](#) implies that Western financial institutions must adjust their risk assessment models or face decreased influence on the continent.

For Private Sector/Investors:

- **Regulatory Compliance:** Investors in the tech sector must align with [sovereign cloud strategies](#) as NITDA moves toward data localization.
- **Supply Chain Risk:** The [egg and protein crisis](#) indicates a profound vulnerability in the agricultural supply chain that requires urgent investment in logistics and energy-efficient cold storage.
- **Market Opportunity:** The Dangote Refinery IPO represents a [landmark moment](#) for African capital markets; international investors should monitor the 10% share sale for signs of foreign direct investment appetite.

ABOUT THIS REPORT

Today's Media Trends is a public interest experiment in applying deep thematic trend analysis to television news coverage from

around the world to explore how responsibly applied advanced AI can help journalists and scholars better understand the overarching trends, themes and patterns of our global world.

No data is used to train or tune any AI model.

Each morning, in collaboration with the Internet Archive's TV News Archive, we apply Google's Gemini 3 to deeply examine yesterday's coverage from each television news channel to tease out the overarching themes and trends of its news coverage into a richly annotated thematic analysis. Each high-level insight is connected back to the original broadcast, allowing journalists and scholars to understand the dominate themes and trends and instantly click out to the underlying sources for details.

By helping journalists and scholars see the broader trends and patterns of global news coverage, this analysis helps them identify relevant stories and coverage they might not otherwise have encountered and uncover connections, emphases and narrative shifts that enable more comprehensive reporting and deeper, evidence-based research.

This report is entirely machine generated using Gemini 3 and may include errors and omissions. Please verify all findings. No data is used to train or tune any AI model.

For questions or suggestions, please contact kalev.leetaru5@gmail.com. You can also learn more about the GDEL Project at <https://blog.gdelproject.org/> and the Internet Archive's TV News Archive at <https://archive.org/details/tv>.