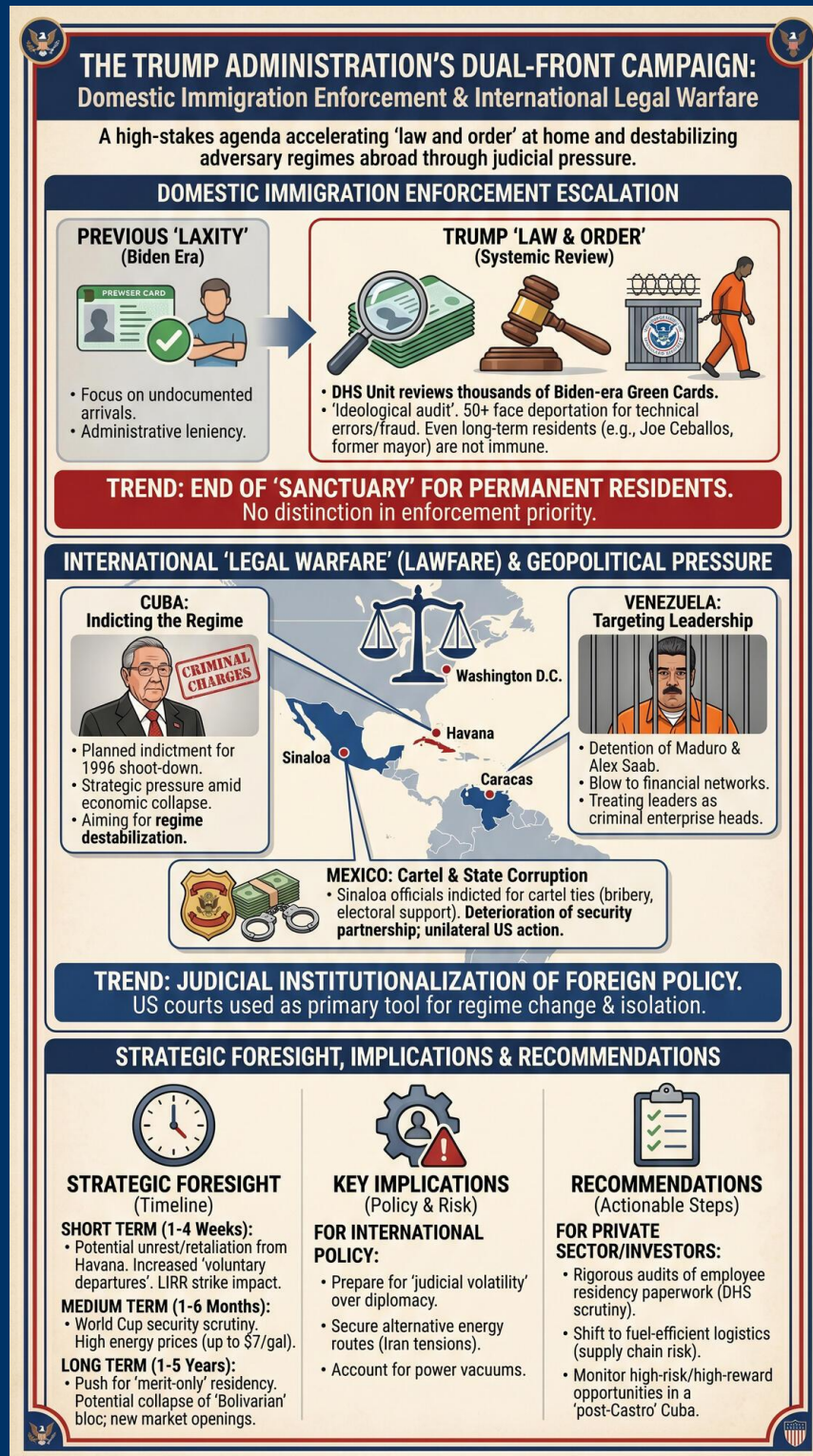


TODAY'S MEDIA TRENDS

KSTS

MAY 16, 2026

THE GDELT PROJECT



TODAY'S MEDIA TRENDS

KSTS

MAY 16, 2026

THE TRUMP ADMINISTRATION
ACCELERATES A HIGH-STAKES
CAMPAIGN OF DOMESTIC
IMMIGRATION ENFORCEMENT AND
AGGRESSIVE LEGAL WARFARE
AGAINST ADVERSARY REGIMES IN
LATIN AMERICA.

DAY-AT-A-GLANCE

On May 15-16, 2026, the Trump administration signaled a decisive escalation in its "law and order" agenda, characterized by a systematic review of legal residency statuses and the application of criminal indictments against foreign heads of state. Domestically, the Department of Homeland Security (DHS) has initiated a [comprehensive review](#) of permanent residencies granted during the Biden era, signaling that even "Green Card" holders are no longer immune to the administration's deportation mandates. This is exemplified by the high-profile detention of a former Kansas mayor, a long-term resident and Trump voter, who now faces removal for [illegal voting](#) despite his decades of community service. These actions suggest a policy environment where administrative laxity from previous years is

being aggressively litigated, creating significant uncertainty for millions of legal immigrants.

Internationally, the administration is leveraging "legal warfare" (lawfare) to destabilize or delegitimize adversary regimes. The Department of Justice is preparing formal [criminal charges](#) against former Cuban leader Raúl Castro, coinciding with the anniversary of Cuban independence. This follows the reported detention of Venezuelan leader Nicolás Maduro earlier in the year, indicating a pattern of using the U.S. judicial system to target high-level political figures in the Western Hemisphere. Meanwhile, President Trump's return from a high-level summit in China highlights a precarious balance: while maintaining trade dialogue with Beijing, the administration remains [locked in tensions](#) regarding Iran's maritime provocations and the regional influence of the Sinaloa Cartel, which now involves indictments of high-ranking Mexican state officials.

MAJOR DEVELOPMENTS

- **Systemic Residency Revocations:** DHS has established a new unit to review thousands of Green Cards, focusing on those approved under the Biden administration. At least [50 individuals](#) are already facing deportation, with 500 cases currently under active investigation for alleged fraud or "lax" vetting procedures. This represents a pivot from targeting undocumented arrivals to scrutinizing established legal residents.

- **Indictment of Raúl Castro:** U.S. prosecutors plan to charge the 94-year-old former dictator for his role in the 1996 shoot-down of "Brothers to the Rescue" civilian aircraft. This move is seen as a [strategic pressure](#) tactic against the current Cuban regime, which is currently facing a total energy collapse and severe food shortages.
- **Mexican State-Level Corruption Scandals:** Ten officials from Sinaloa, including the former Secretary of Security and the Secretary of Finance, have been [placed in U.S. custody](#) or indicted alongside Governor Rubén Rocha Moya. They face charges of taking million-wide bribes and providing electoral support to the Sinaloa Cartel in exchange for impunity.
- **Judicial Victories and Blockages:** While a federal judge blocked Texas's controversial SB4 law, which would have allowed local police to [arrest migrants](#), the Supreme Court handed a victory to Republicans by rejecting a Democratic attempt to revive a previous [congressional map](#) in Virginia. Additionally, the Supreme Court ruled that the abortion pill Mifepristone can [remain available](#) via mail.
- **Child Murders in San Antonio:** A 34-year-old mother, Marlene Vidal, was arrested for capital murder after her children, aged 5 and 7, were found [burned to death](#) inside a vehicle. Family members claim they repeatedly warned Texas authorities that the children were in danger, citing a total failure of the social services system.

KEY GOVERNANCE TOPICS

International Relations & Geopolitical Power Dynamics

- President Trump's summit with Xi Jinping concluded without a concrete commitment from Beijing to facilitate an [agreement with Iran](#), leaving Washington to consider a return to military escalation or further sanctions.
- The administration is closely monitoring "GAESA," a military-led conglomerate in Cuba that controls up to [70% of the island's economy](#), labeling it a strategic security risk.
- The extradition/deportation of Alex Saab, a key financial operator for the Venezuelan regime, [back to the U.S.](#) marks a major blow to Caracas's financial networks.

Domestic Stability & Social Order

- The detention of Joe Ceballos, a former mayor of Kansas who lived in the U.S. for 50 years, for [voting illegally](#) has sparked national debate on the "nuances" of immigration fraud versus clerical errors.
- The Long Island Rail Road (LIRR) strike by five unions has [interrupted service](#) for 250,000 daily commuters, highlighting labor tensions in critical infrastructure.

Corruption & Governance

- Investigations into the Sinaloa state government reveal deep-seated cartel infiltration at the [highest levels of administration](#), including security and finance ministries.

- The San Francisco Unified School District superintendent is scheduled to [testify before Congress](#) regarding parents' rights and federal education law compliance, a target of Republican oversight.

Biosurveillance & Health Security

- A Canadian citizen has [tested positive](#) for Hantavirus after a luxury cruise ship outbreak that claimed three lives earlier in the month.
- The first bird case of [West Nile Virus](#) in Fresno for the 2026 season was confirmed, prompting health warnings as summer temperatures rise.

LEGISLATIVE ROUNDUP

Governance activity focused on judicial oversight of state-level immigration and electoral policies, alongside federal scrutiny of local educational institutions and medical distribution. High-level diplomatic press events in Beijing and Havana set the tone for the administration's "America First" foreign policy application.

BILLS DISCUSSED/DEBATED:

- **Texas SB4:** A state law that would permit local police to arrest suspected illegal crossers; currently [blocked by a federal judge](#).
- **Virginia Redistricting Amendment:** A constitutional amendment to redraw districts, which the Supreme Court effectively upheld by [rejecting a Democratic challenge](#).

HEARINGS & PRESS EVENTS:

- **Congressional Education Hearing:** San Francisco's superintendent will [present testimony](#) regarding adherence to federal civil rights and education laws.
- **Trump-Xi Air Force One Presser:** The President clarified that no [commitments on Taiwan](#) were made during the summit and warned of consequences for Iran.
- **Laredo Police Conference:** Officials revealed that the six migrants found dead in a train car likely died from [extreme heat](#) during transit from California, not at the destination.

DEEP DIVE: TRENDS AND THEMES

The End of "Sanctuary" for Residents

The most significant domestic trend is the removal of the distinction between undocumented migrants and permanent residents (Green Card holders) in enforcement priority. The DHS unit's focus on "Biden-era" approvals suggests an [ideological audit](#) of the immigration system. Even long-standing community figures like Joe Ceballos or the spouses of veterans, such as [Daisy Rivera Ortega](#), are being swept into detention. This creates a new risk profile for legal immigrants: technical errors from decades ago are now being used as grounds for revocation of status.

Judicial Institutionalization of Foreign Policy

The U.S. judicial system is increasingly being used as a primary tool for regime change. By [indicting Raúl Castro](#) and holding Nicolás Maduro, the administration is effectively treating foreign heads of state as fugitive heads of criminal enterprises. This "lawfare"

strategy bypasses traditional diplomacy, aiming to isolate these regimes financially and legally. The upcoming May 20 announcement regarding Castro is timed for maximum [symbolic impact](#) within the Cuban exile community and on the island itself.

The Deterioration of the Mexican Security Partnership

Tensions with Mexico are reaching a breaking point following the [death of two CIA agents](#) in Mexico and the subsequent discovery of pervasive corruption in Sinaloa. The U.S. is no longer relying on Mexican federal cooperation, instead opting to [arrest Mexican officials](#) (such as General Gerardo Mérida Sánchez) on U.S. soil. This unilateral approach suggests the administration views the Mexican state as partially compromised by narco-interests.

STRATEGIC FORESIGHT

- **Short Term (1-4 Weeks):** Expect significant civil unrest or diplomatic retaliation from Havana following the formal indictment of Raúl Castro on [May 20](#). Domestic immigrant communities may see an increase in "voluntary departures" as the DHS review of Green Cards expands. The LIRR strike could trigger secondary labor actions in other transit sectors if not resolved quickly.
- **Medium Term (1-6 Months):** The 2026 World Cup preparations will face increasing security scrutiny as the U.S. balances massive tourism with [environmental and safety](#) mandates. High energy prices, potentially reaching [\\$7 per gallon](#) in California due to the Iran conflict, will become a central political liability for state-level governors.

- **Long Term (1-5 Years):** The U.S. will likely move toward a "merit-only" or "vetted-only" residency system, with retroactive audits becoming a standard feature of DHS. Geopolitically, the capture of regional leaders like Maduro and the pressure on Castro may lead to a [structural collapse](#) of the "Bolivarian" bloc, potentially opening new markets for U.S. investment in a "post-Castro" Cuba.

RECOMMENDATIONS & IMPLICATIONS

For International Policy:

- Diplomats should prepare for a period of "judicial volatility," where U.S. criminal courts dictate foreign policy outcomes more than the State Department.
- The "America First" stance on Iran suggests that U.S. allies should secure [alternative energy routes](#) as the Strait of Hormuz remains a high-risk zone for maritime traffic.
- Security architectures in the Western Hemisphere must account for a potential power vacuum in Cuba and Venezuela if the Castro and Maduro legal proceedings trigger regime collapses.

For Private Sector/Investors:

- **Regulatory Compliance:** Companies employing foreign nationals must conduct rigorous audits of employee residency paperwork, as [DHS scrutiny](#) now extends to previously "safe" permanent residents.
- **Supply Chain Risk:** Ongoing tensions with Iran and the potential for [surging fuel costs](#) necessitate a shift toward more fuel-efficient or electric logistics fleets, as seen in the [Natomas school district](#) model.

- **Investment Opportunities:** The eventual "recovery" of Cuba, as suggested by President Trump's interest in [exile investment](#), represents a high-risk, high-reward frontier for infrastructure and tourism sectors if legal barriers are removed.

ABOUT THIS REPORT

Today's Media Trends is a public interest experiment in applying deep thematic trend analysis to television news coverage from around the world to explore how responsibly applied advanced AI can help journalists and scholars better understand the overarching trends, themes and patterns of our global world.

No data is used to train or tune any AI model.

Each morning, in collaboration with the Internet Archive's TV News Archive, we apply Google's Gemini 3 to deeply examine yesterday's coverage from each television news channel to tease out the overarching

themes and trends of its news coverage into a richly annotated thematic analysis. Each high-level insight is connected back to the original broadcast, allowing journalists and scholars to understand the dominate themes and trends and instantly click out to the underlying sources for details.

By helping journalists and scholars see the broader trends and patterns of global news coverage, this analysis helps them identify relevant stories and coverage they might not otherwise have encountered and uncover connections, emphases and narrative shifts that enable more comprehensive reporting and deeper, evidence-based research.

This report is entirely machine generated using Gemini 3 and may include errors and omissions. Please verify all findings. No data is used to train or tune any AI model.

For questions or suggestions, please contact kalev.leetaru5@gmail.com. You can also learn more about the GDELT Project at <https://blog.gdeltproject.org/> and the Internet Archive's TV News Archive at <https://archive.org/details/tv>.