

TODAY'S MEDIA TRENDS

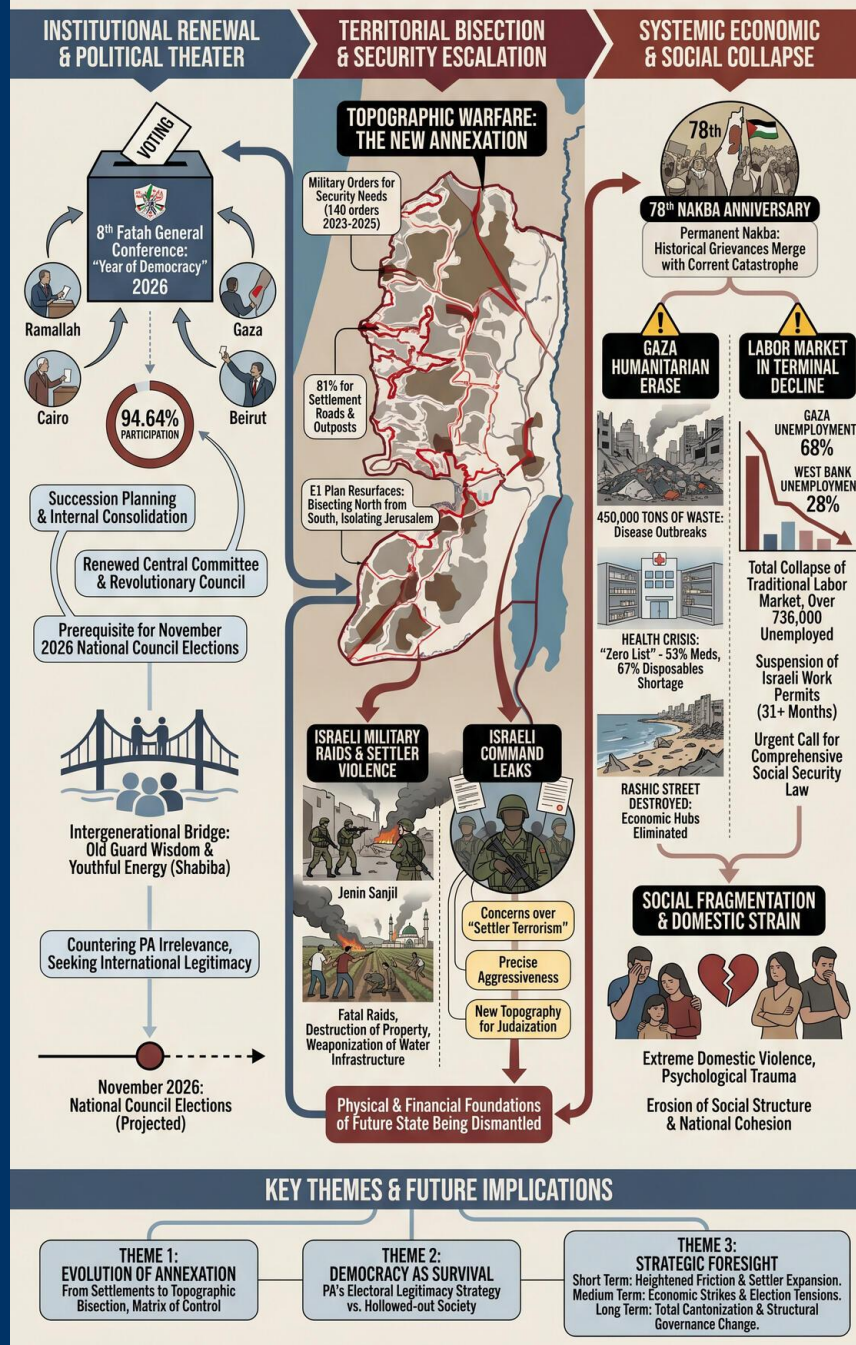
PALESTINETV

MAY 16, 2026

THE GDELT PROJECT

PALESTINIAN INSTITUTIONAL RENEWAL AMID TERRITORIAL BISECTION & ECONOMIC COLLAPSE

May 2026: Fatah Conference, West Bank Fragmentation, and Gaza's Humanitarian Crisis



TODAY'S MEDIA TRENDS

PALESTINETV

MAY 16, 2026

PALESTINIAN INSTITUTIONAL
RENEWAL THROUGH THE 8TH
FATAH GENERAL CONFERENCE
OCCURS AMID ESCALATING
TERRITORIAL BISECTION IN THE
WEST BANK AND SYSTEMIC
ECONOMIC COLLAPSE.

DAY-AT-A-GLANCE

The reporting cycle of May 16-17, 2026, is dominated by the conclusion of the 8th Fatah General Conference, framed by the Palestinian leadership as a pivotal "Year of Democracy." President Mahmoud Abbas and the Fatah leadership utilized the conference to signal institutional stability and succession planning, conducting simultaneous voting across Ramallah, Gaza, Cairo, and Beirut. This internal political consolidation is explicitly intended to counter narratives of Palestinian Authority (PA) irrelevance, with leadership emphasizing the [renewal of the Central Committee](#) and the Revolutionary Council as a prerequisite for upcoming National Council elections in November. However, this high-level political theater contrasts sharply with a deteriorating security environment in the West Bank, where settler-military

coordination has reached a new threshold of "topographic warfare," effectively slicing the territory into isolated enclaves through military orders and road infrastructure.

Simultaneously, the 78th anniversary of the Nakba has been re-contextualized by official media as a "permanent Nakba," merging historical grievances with the current humanitarian catastrophe in Gaza. The economic data presented is dire, with unemployment reaching [68% in the Gaza Strip](#) and 28% in the West Bank, signaling a total collapse of the traditional labor market and a desperate need for a new social security framework. This convergence of institutional electioneering, territorial loss, and economic erasure suggests a period of extreme volatility as the PA attempts to maintain its governing mandate while the physical and financial foundations of a future state are being dismantled.

MAJOR DEVELOPMENTS

8th Fatah General Conference and Succession Politics

- The conference concluded its third day with voting for [18 Central Committee seats](#) and 80 Revolutionary Council seats, involving approximately 2,580 delegates globally.
- Participation reached [94.64% across four voting arenas](#), including Gaza, despite the ongoing conflict and movement restrictions.
- Leadership framed the event as an "intergenerational bridge," attempting to balance the "wisdom of the old guard" with youthful energy to [confront future challenges](#).

- The conference is seen as a precursor to [National Council elections](#) scheduled for November 2026.

Systemic Settlement Expansion and "Topographic Warfare"

- The National Office for the Defense of Land reported that Israeli settlers, backed by the military, have [fundamentally altered the map](#) of the West Bank using military infrastructure and confiscation orders.
- A surge in "military orders for security needs" (140 orders between 2023-2025) has seen [81% of such orders used](#) for settlement bypass roads and outpost legalization.
- The E1 settlement plan has resurfaced, threatening to [bisect the northern West Bank](#) from the south and fully isolate Jerusalem.

West Bank Security Escalation

- Israeli forces conducted a fatal raid in Jenin, [killing Nour al-Din Fayyad](#), a schoolteacher, as part of ongoing operations in the northern West Bank.
- Settler violence escalated in Ramoun and Sanjil, with reports of [mosques being targeted](#) and agricultural infrastructure destroyed.
- Military leaks published in Israeli media (Haaretz) reveal internal concerns about ["settler terrorism" and a "new topography"](#) designed to Judaize Palestinian neighborhoods like Sheikh Jarrah.

Gaza Humanitarian and Infrastructure Erase

- Health officials warn of a "zero list" for [essential medicines \(53% shortage\)](#) and medical disposables (67% shortage) in Gaza.
- Over 450,000 tons of [waste are accumulating](#) around displaced persons' tents, fueling outbreaks of disease and rodent infestations.
- The systematic destruction of the [Rashid Street coastal infrastructure](#) has eliminated vital economic hubs for tourism and fishing.

KEY GOVERNANCE TOPICS

Economic Security and Labor Collapse

The labor market is in a state of terminal decline. The Palestinian Center for Statistics reports that the [labor force participation](#) has plummeted, leaving over 736,000 people unemployed. The suspension of Israeli work permits for over 31 months has created an [unprecedented financial vacuum](#), forcing families to survive on intermittent community aid or "shifts" of partial employment. There is an urgent call to implement a [Comprehensive Social Security Law](#) to recover funds held under the 1970 Paris Protocols and provide a safety net for the burgeoning unemployed population.

Elite Politics & Leadership Dynamics

The Fatah elections represent a critical attempt at [institutional survival](#). By including representatives from the diaspora and "the youth" (Shabiba), the PA is attempting to mitigate a legitimacy crisis. Analysts noted that Fatah is the [only Palestinian faction](#) currently holding public general conferences, a point used to contrast its governance model with its rivals.

Domestic Stability & Social Order Severe social strain is manifesting in extreme domestic violence. The case of [Naim Shami](#), a child murdered and burned by his father, has sparked a national debate on the "collapse of the family unit" under the pressure of [economic hardship and psychological trauma](#). Experts argue that the "stigma" of seeking mental health care, combined with the lack of a robust [child protection framework](#), is leading to a surge in preventable family tragedies.

Food & Water Access/Security Settler attacks on [water pumping stations](#) in the West Bank (specifically Ansamia) highlight the weaponization of critical infrastructure. While the PA is forced to buy water from Israel at high prices, settler groups are [smashing monitors and cutting wires](#) to deprive Palestinian communities of their basic needs.

LEGISLATIVE ROUNDUP

Governance efforts are focused on the "Democratic Roadmap" involving constitutional and party-law reforms to accommodate a broader political spectrum ahead of the November 2026 elections. This includes the [drafting of a new constitution](#) and laws governing political parties and general elections.

BILLS DISCUSSED/DEBATED:

- **Social Security Law:** Debates continue regarding a comprehensive [social insurance system](#) to provide unemployment and retirement benefits, intended to reclaim funds currently held in Israeli accounts.

- **Israeli Antiquities Authority Extension:** The Israeli Knesset passed the first reading of a bill to [establish an Israeli Antiquities Authority](#) in the West Bank, a move seen as "archaeological annexation."

HEARINGS & PRESS EVENTS:

- **Commemoration of the 78th Nakba at the UN:** Palestinian Ambassador Riyad Mansour delivered a speech [on behalf of President Abbas](#), asserting that the Palestine question remains the "greatest test for the international system."
- **Israeli Regional Command Press Event:** Leaked transcripts from an Israeli Commander (Avi Blot) [admitted to discriminatory shooting policies](#) and a "precise aggressiveness" toward Palestinians to prevent another October 7 scenario.

DEEP DIVE: TRENDS AND THEMES

The Evolution of Annexation: From Settlements to Topography A significant trend is the shift from "isolated settlement building" to "territorial bisection." Israeli military orders are no longer just about land for houses; they are about [controlling the "topography"](#)—the roads, the high ground, and the connectivity. By utilizing "security orders," the occupation is building a [permanent matrix of control](#) that makes the "two-state solution" physically impossible, even as Fatah holds elections based on that very premise.

Democracy as a Survival Mechanism The PA is doubling down on "electoral legitimacy." By framing 2026 as the [Year of Democracy](#), the leadership is attempting to revitalize a stagnant political class. The high turnout in

Fatah elections is being used as [evidence that the movement](#) is "still alive" and remains the only viable diplomatic partner for the international community. This is a strategic pivot intended to attract foreign investment and political backing in the face of Hamas's continued influence.

Social Fragmentation and Psychological Erosion The transcripts reveal a society at a breaking point. The normalization of [extreme violence within families](#) and the psychological toll of [repeated displacement](#) in Gaza (some families displacing 14 times) suggest a "hollowed-out" social structure. This fragmentation is arguably the most significant long-term threat to Palestinian national cohesion, as the "individual survival" instinct [overtakes the "collective resistance"](#) narrative.

STRATEGIC FORESIGHT

Short Term (1-4 Weeks): Expect heightened friction as the 8th Fatah Conference results are announced. The "losers" of the Central Committee vote may [challenge the legitimacy](#) of the process, particularly in the diaspora. Simultaneously, settler groups in the West Bank are likely to capitalize on the [current military cover](#) to establish more outposts before any potential international diplomatic shift.

Medium Term (1-6 Months): The economic crisis will likely trigger a new wave of [labor strikes or civil unrest](#) if the Social Security Law or an alternative financial injection is not finalized. The scheduled November elections for the National Council will become a flashpoint for Fatah-Hamas tensions, potentially leading to [another postponement](#) or a total breakdown in the "democratic roadmap."

Long Term (1-5 Years): The "Topographic Warfare" currently being implemented will likely result in the [total cantonization of the West Bank](#). This will force a structural change in Palestinian governance, moving away from a central PA toward localized "city-state" administrations, as [physical connectivity](#) between the north, center, and south of the West Bank is permanently severed by Israeli road networks.

RECOMMENDATIONS & IMPLICATIONS

For International Policy:

- The international community must recognize that "democracy" in the PA is being used for [internal elite consolidation](#) rather than broad political reform; engagement should focus on the transparency of the November National Council elections.
- Immediate biosurveillance and sanitation aid are required in Gaza to prevent [catastrophic disease outbreaks](#) stemming from the 450,000 tons of unmanaged waste.
- Diplomatic pressure is needed to halt the [archaeological annexation](#) through the Knesset's new Antiquities Authority bill, which will facilitate further land seizures.

For Private Sector/Investors:

- **Supply Chain Risk:** The bisection of the West Bank into northern and southern zones will significantly [increase logistical costs](#) and lead times for any manufacturing or agricultural transport.

- **Labor Market Instability:** The 68% unemployment in Gaza and the potential for [social unrest in the West Bank](#) create a high-risk environment for long-term capital investments, with a high likelihood of labor-related disruptions.
- **Institutional Opportunity:** The push for a [Social Security system](#) may create a niche for financial services and insurance firms to consult on the management of recovered Palestinian funds.

ABOUT THIS REPORT

Today's Media Trends is a public interest experiment in applying deep thematic trend analysis to television news coverage from around the world to explore how responsibly applied advanced AI can help journalists and scholars better understand the overarching trends, themes and patterns of our global world.

No data is used to train or tune any AI model.

Each morning, in collaboration with the Internet Archive's TV News Archive, we apply Google's Gemini 3 to deeply examine

yesterday's coverage from each television news channel to tease out the overarching themes and trends of its news coverage into a richly annotated thematic analysis. Each high-level insight is connected back to the original broadcast, allowing journalists and scholars to understand the dominate themes and trends and instantly click out to the underlying sources for details.

By helping journalists and scholars see the broader trends and patterns of global news coverage, this analysis helps them identify relevant stories and coverage they might not otherwise have encountered and uncover connections, emphases and narrative shifts that enable more comprehensive reporting and deeper, evidence-based research.

This report is entirely machine generated using Gemini 3 and may include errors and omissions. Please verify all findings. No data is used to train or tune any AI model.

For questions or suggestions, please contact kalev.leetaru5@gmail.com. You can also learn more about the GDEL Project at <https://blog.gdelproject.org/> and the Internet Archive's TV News Archive at <https://archive.org/details/tv>.