

# TODAY'S MEDIA TRENDS

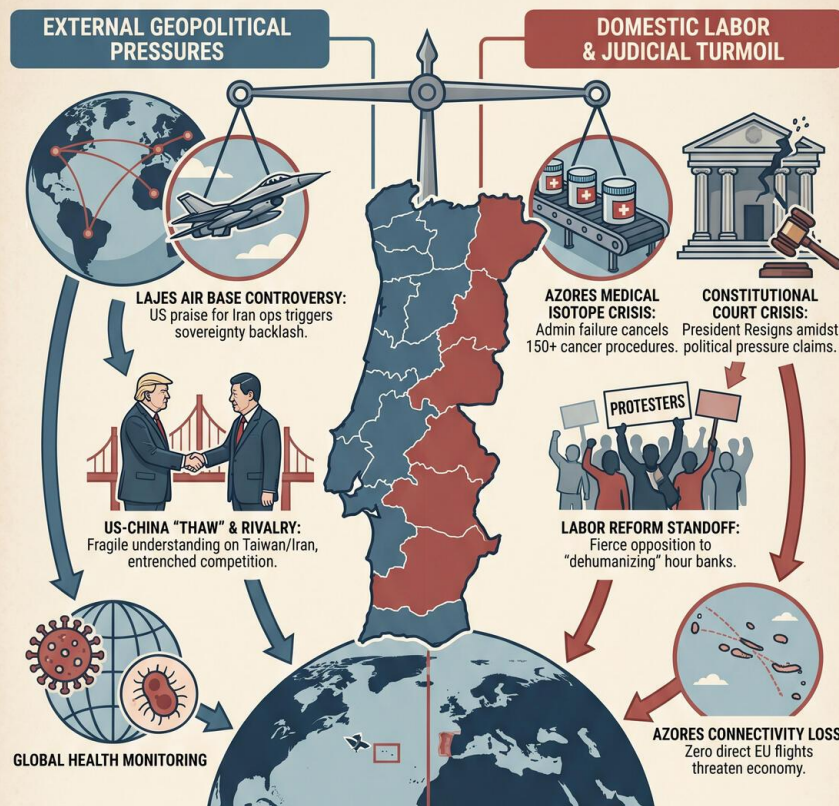
RTPI

MAY 16, 2026

THE GDELT PROJECT

## PORTUGAL'S DUAL CHALLENGE: Navigating Geopolitical Alignments & Domestic Crises (May 16, 2026)

A Critical Tension Between Strategic International Commitments and Systemic Internal Vulnerabilities.



### DEEP DIVE: KEY TRENDS & THEMES



**ADMINISTRATIVE FRAGILITY & "STATE INCOMPETENCE"**  
Recurring logistical failures & deficit in state execution capacity (e.g., Isotope Crisis, PRR fund loss).



**RISE OF HYBRID STRATEGIC RIVALRY**  
Economic interdependence mixed with systemic opposition creates alliance plasticity.



**SOCIAL FRAGMENTATION & "SENIOR" GAP**  
Market bias against workers over 50 & state failure to adapt social support.

### STRATEGIC FORESIGHT & RECOMMENDATIONS

#### FORESIGHT TIMELINE (SHORT TO LONG TERM)



#### IMPLICATIONS & RECOMMENDATIONS

- | FOR INTERNATIONAL POLICY   | FOR PRIVATE SECTOR  |
|--|---|
| <ul style="list-style-type: none"> <li>Clarify Lajes status</li> <li>Leverage Porto 5G</li> <li>Prepare for anti-Western bloc</li> </ul> | <ul style="list-style-type: none"> <li>Invest in healthcare logistics</li> <li>Avoid coastal real estate</li> <li>Review older worker hiring</li> </ul> |

# TODAY'S MEDIA TRENDS

RTPI

MAY 16, 2026

---

PORTUGAL NAVIGATES  
GEOPOLITICAL ALIGNMENT  
PRESSURES AND HEALTHCARE  
DISRUPTIONS AMID DOMESTIC  
LABOR AND JUDICIAL TURMOIL

## DAY-AT-A-GLANCE

---

May 16, 2026, was defined by a critical tension between Portugal's strategic international alignments and systemic domestic vulnerabilities. The most pressing diplomatic development involved a significant friction point regarding the use of the Lajes Air Base in the Azores. U.S. Secretary of State Marco Rubio publicly praised Portugal for granting what appeared to be early, broad authorization for military operations against Iran. This triggered a domestic political firestorm, with the Portuguese government struggling to frame the authorization as "conditional" and "proportional" while opposition parties accused the administration of a "planetary humiliation" and a loss of national sovereignty. This occurs against the backdrop of a broader "thaw" in U.S.-China relations following a historic summit between Donald Trump and Xi Jinping, where a fragile understanding on Taiwan and Iran was

established, though strategic rivalries remain entrenched.

Domestically, the Portuguese government faces a dual crisis of institutional trust and administrative efficacy. The sudden resignation of the President of the Constitutional Court, José João Abrantes, raised alarms regarding political pressure on the judiciary, despite his public denials. Simultaneously, a severe administrative failure in the Azores—where critical medical isotopes were impounded at an airport due to security manual discrepancies—resulted in the cancellation of life-saving procedures for over 150 cancer patients. These events, coupled with ongoing controversies over labor reforms and the withdrawal of the "Return Law" (immigration) for further refinement, suggest a government struggling to maintain coalition cohesion and state capacity in the face of mounting external and internal pressures.

## MAJOR DEVELOPMENTS

---

- **Lajes Air Base Controversy and Transatlantic Friction:** A diplomatic rift opened after [Marco Rubio thanked Portugal](#) for its cooperation in the Iran conflict, implying a level of military access that the Portuguese Ministry of Foreign Affairs (MNE) insists was [restricted by specific humanitarian and proportional conditions](#). The opposition has seized on this as a violation of sovereignty.
- **Azores Medical Isotope Crisis:** The region's only nuclear medicine unit was paralyzed when a [shipment of radioactive isotopes](#) was impounded at Ponta Delgada airport by SATA for failing to meet security manual specifications. This resulted in the [loss of €7,000 in medicine](#) and the suspension of critical cancer diagnostics.

- **Institutional Crisis in the Constitutional Court:** President José João Abrantes [resigned from the Constitutional Court](#), citing personal reasons while vigorously denying that [political pressure from the Chega party](#) or other factions influenced his departure, though the timing coincides with intense debates over judicial appointments.
- **U.S.-China Strategic "Understanding":** Following a high-profile visit to Beijing, [Donald Trump expressed confidence](#) that China would not support a formal declaration of independence by Taiwan during his tenure, characterizing [Xi Jinping as a "great statesman"](#) and securing major aircraft deals for Boeing.
- **Labor Reform Standoff:** The government's proposed labor reform continues to face [fierce opposition from the PS and Chega](#), with critics labeling the measures "dehumanizing" due to provisions on [individual hour banks and outsourcing](#) after collective dismissals.
- **Azores Connectivity Loss:** The region faces a [zero-direct-flight scenario](#) for European destinations this coming winter following [Azores Airlines' withdrawal](#) from routes to Paris and Barcelona, threatening tourism and economic competitiveness.

## KEY GOVERNANCE TOPICS

---

**Geopolitical Power Dynamics:** The strategic landscape is shifting as the U.S. attempts to balance a [trade-heavy relationship with China](#) while maintaining military pressure in the Middle East. Analysts suggest the U.S. is facing a [Thucydides Trap scenario](#), where the rising power (China) and the established power (U.S.) are increasingly [interdependent yet systemically opposed](#).

**Biosurveillance and Public Health:** Global health authorities are monitoring a [new Ebola outbreak](#) in the Congo that has claimed over 80 lives. Meanwhile, the WHO downplayed the [global risk of Hantavirus](#) following a suspected case in Tenerife, emphasizing that international [cooperation remains effective](#) in containing localized outbreaks.

**Critical Infrastructure and Connectivity:** In Portugal, the [city of Porto was recognized](#) for having the best 5G network in Europe, highlighting a [€1.6 billion annual investment](#) in digital infrastructure. However, this contrasts with physical infrastructure failures, such as [severe coastal erosion](#) threatening over 900 km of shoreline and [recurrent landslides in Madeira](#) that have damaged homes and critical roadways.

**Labor and Industry:** The domestic labor market is showing a [bias against workers over 50](#), with large companies making fewer than 5% of their new hires from this demographic. This is occurring as the government attempts to pass [reforms that would reduce overtime pay](#) and allow for greater labor flexibility, leading to [unions such as the CGTP](#) calling for regional minimum wage increases.

**Economic Security:** Rising fuel costs are directly impacting the [delivery of social services](#) in Portugal's interior. IPSS (Social Solidarity Institutions) report that [domiciliary support is at risk](#) because security social contracts only cover five days of service while [vulnerable populations require daily care](#).

## LEGISLATIVE ROUNDUP

---

The legislative agenda was marked by the government's retreat on controversial immigration measures and a persistent deadlock over labor laws. The "Return Law," designed to [expedite the expulsion of illegal](#)

[immigrants](#), was unexpectedly withdrawn from a final vote for further "perfection" following [negative opinions from the UN](#) and public prosecutors regarding the detention of minors.

- **Labor Reform Proposal (Reforma Laboral):** Includes [50 amendments](#) to the original project, re-introducing controversial [individual hour banks](#) with a 25% extra pay provision and [removing the ban on outsourcing](#) post-dismissal.
- **Law of Forgetting (Lei do Esquecimento):** New [regulations were clarified](#) to prevent banks and insurers from [discriminating against former cancer patients](#) who have been in remission for 2 to 10 years.
- **Return Law (Lei do Retorno):** A proposed [fast-track expulsion policy](#) for illegal immigrants, currently [postponed for revision](#) by the Constitutional Affairs Commission.

## HEARINGS & PRESS EVENTS

- **José João Abrantes Interview:** The outgoing Constitutional Court President [defended judicial independence](#) and warned that [reducing labor law to civil law](#) would be a "regression to the 19th century."
- **Donald Trump Presser:** Aboard Air Force One, the President claimed his relationship with Xi Jinping [secured global trade stability](#) and characterized the Taiwan situation as [stably "neutral"](#) under his leadership.
- **Marco Rubio Statement:** Praised Portugal for its [strategic alignment at Lajes](#), specifically regarding the conflict with Iran, sparking a major [domestic political backlash](#).

## DEEP DIVE: TRENDS AND THEMES

---

**Administrative Fragility and "State Incompetence":** A recurring theme across the transcripts is the failure of state or state-adjacent entities to manage basic logistics. The isotope crisis in the Azores—where [life-saving medicine was allowed to expire](#) due to a refusal to bypass a manual—highlights a [lack of common-sense administrative oversight](#). Similarly, the loss of [millions in EU funds \(PRR\)](#) for continuous care beds due to "calculation errors" points to a significant [deficit in state execution capacity](#).

**The Rise of Hybrid Strategic Rivalry:** The Janela Global analysis suggests that we have moved past the "Cold War" model. The U.S. and China are [economically inseparable yet militarily competitive](#). This creates a [plasticity in alliances](#) where countries like China can be "partners" in trade but "rivals" in technology, and the U.S. must [negotiate with autocrats](#) to secure regional interests (e.g., Iran/Straits of Hormuz).

**Social Fragmentation and the "Sénior" Gap:** Portugal's aging population is being [squeezed by a market](#) that favors young digital natives and a state that is [failing to adapt fuel and energy subsidies](#) to the realities of rural care. The fact that [only 5% of new hires](#) in major firms are over 50 suggests a looming [economic and social crisis](#) as the demographic pyramid continues to invert.

## STRATEGIC FORESIGHT

---

**Short Term (1-4 Weeks):** Expect a [parliamentary inquiry \(CPI\)](#) or urgent hearings regarding the Lajes Base authorization as the PCP and PS push for [disclosure of diplomatic documents](#). The

Azorean government will likely face [lawsuits from patients](#) affected by the medical isotope disruption.

**Medium Term (1-6 Months):** The [winter travel season](#) will see a significant economic dip in the Azores due to [zero direct European flight connectivity](#), potentially forcing a regional government bailout of SATA or new [subsidies for private airlines](#). The Constitutional Court will likely remain [unstable until new judges are elected](#), a process hindered by the current parliamentary fragmentation.

**Long Term (1-5 Years):** Coastal erosion will force [planned retreats of coastal communities](#), with the government likely facing [billions in relocation costs](#) as territory equivalent to the island of Corvo is [lost to the sea](#). Strategically, the Lajes base will become increasingly [pivotal for U.S. power projection](#) in the Middle East and Africa, likely leading to a [renegotiation of the bilateral agreement](#) with more explicit Portuguese sovereignty safeguards.

## RECOMMENDATIONS & IMPLICATIONS

---

### For International Policy:

- The MNE must [clarify the Lajes operational status](#) to avoid being caught between U.S. military expectations and [EU/NATO diplomatic constraints](#).
- Portugal should leverage its [Porto 5G hub](#) to lead EU discussions on [Web-based app technologies](#) (WebRTC) to reduce reliance on proprietary app stores.
- Preparation for [Putin's visit to China](#) is essential, as it may signal a [solidification of an anti-Western bloc](#) that directly impacts European security architecture.

### For Private Sector/Investors:

- **Healthcare Logistics:** There is a [critical need for private alternatives](#) in medical isotope transportation and [diagnostic units in the Azores](#) to mitigate state airline failures.
- **Real Estate/Insurance:** Coastal properties along the [Caparica and Madeira shorelines](#) represent an [escalating high-risk asset class](#) due to irreversible erosion and landslide trends.
- **Labor Compliance:** Companies should [proactively review hiring practices](#) for those over 50 to avoid potential [future age-discrimination litigation](#) or regulatory penalties as the state seeks to [balance the social security deficit](#).

## ABOUT THIS REPORT

---

**Today's Media Trends** is a public interest experiment in applying deep thematic trend analysis to television news coverage from around the world to explore how responsibly applied advanced AI can help journalists and scholars better understand the overarching trends, themes and patterns of our global world.

### No data is used to train or tune any AI model.

Each morning, in collaboration with the Internet Archive's TV News Archive, we apply Google's Gemini 3 to deeply examine yesterday's coverage from each television news channel to tease out the overarching themes and trends of its news coverage into a richly annotated thematic analysis. Each high-level insight is connected back to the original broadcast, allowing journalists and scholars to understand the dominate themes and trends

and instantly click out to the underlying sources for details.

By helping journalists and scholars see the broader trends and patterns of global news coverage, this analysis helps them identify relevant stories and coverage they might not otherwise have encountered and uncover connections, emphases and narrative shifts that enable more comprehensive reporting and deeper, evidence-based research.

This report is entirely machine generated using Gemini 3 and may include errors and omissions. Please verify all findings. No data is used to train or tune any AI model.

For questions or suggestions, please contact [kalev.leetaru5@gmail.com](mailto:kalev.leetaru5@gmail.com). You can also learn more about the GDELT Project at <https://blog.gdeltproject.org/> and the Internet Archive's TV News Archive at <https://archive.org/details/tv>.