

TODAY'S MEDIA TRENDS

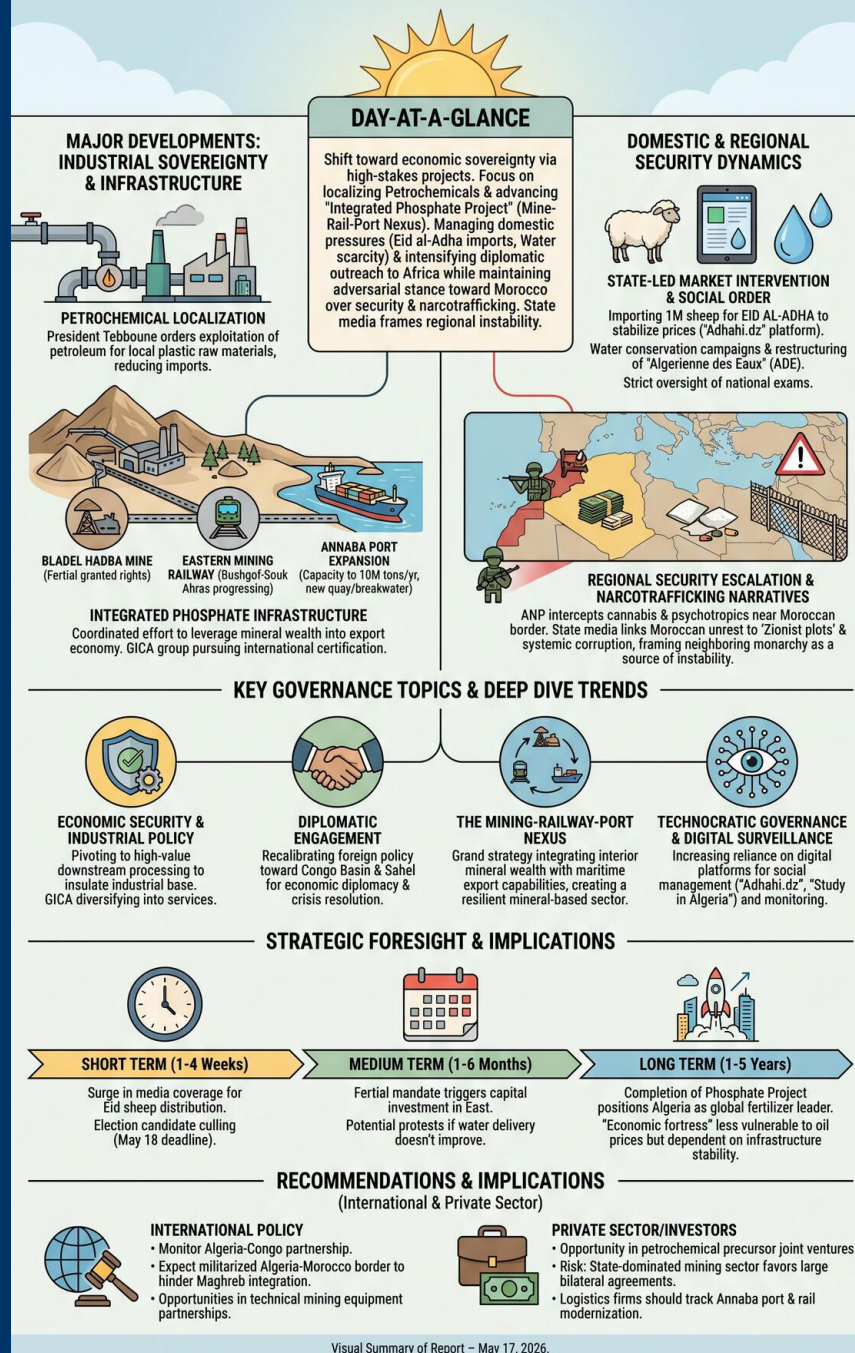
CANALALGERIE

MAY 17, 2026

THE GDELT PROJECT

ALGERIAN GOVERNANCE ACCELERATES STRATEGIC INDUSTRIAL DIVERSIFICATION & INFRASTRUCTURE EXPANSION WHILE ESCALATING REGIONAL SECURITY NARRATIVES

REPORT SUMMARY & VISUALIZATION – MAY 17, 2026



TODAY'S MEDIA TRENDS

CANALALGERIE

MAY 17, 2026

ALGERIAN GOVERNANCE
ACCELERATES STRATEGIC
INDUSTRIAL DIVERSIFICATION AND
INFRASTRUCTURE EXPANSION
WHILE ESCALATING REGIONAL
SECURITY NARRATIVES

DAY-AT-A-GLANCE

On May 17, 2026, the Algerian government, led by President Abdelmajid Tebboune, signaled a decisive shift toward economic sovereignty through the acceleration of high-stakes industrial and infrastructure projects. A pivotal Council of Ministers meeting focused on localizing the petrochemical industry to reduce import dependency and advancing the "Integrated Phosphate Project" at the Bladel Hadba mine, which is directly linked to the expansion of the Annaba port and the modernization of the Eastern Mining Railway. These developments represent a coordinated effort to leverage Algeria's mineral and hydrocarbon wealth into a diversified, export-oriented economy, supported by national industrial giants like the GICA group, which is currently pursuing international certification to penetrate global markets.

Simultaneously, the state is managing significant domestic social pressures. As Eid al-Adha approaches, the administration has committed to importing one million sheep to stabilize prices, while also launching nationwide awareness campaigns regarding water conservation and the integrity of upcoming national examinations. Externally, Algeria is intensifying its diplomatic outreach to sub-Saharan Africa, specifically the Republic of the Congo, while maintaining a staunchly adversarial stance toward Morocco. State media and security reports focused heavily on large-scale narcotrafficking interceptions originating from Moroccan territory and reported on civil unrest in Morocco, framing the neighboring monarchy as a source of regional instability and social decay following its normalization of ties with Israel.

MAJOR DEVELOPMENTS

- **Strategic Council of Ministers Directives on Industrial Sovereignty**
 - President Tebboune issued strict orders to exploit Algeria's petroleum resources for the [local production of raw materials](#) used in plastic manufacturing, aimed at drastically reducing the national import bill.
 - The Algerian company **Fertial** was granted [exclusive rights to exploit concentrated phosphate ore](#) as part of the initial phase of the national mining strategy.
 - The President emphasized that all strategic projects must adhere to strict deadlines to transition Algeria into an "emerging country" with a [diversified economy](#).

- **Acceleration of the Integrated Phosphate Infrastructure**

- Construction of the Eastern Mining Railway link between [Bushgof and Souk Ahras](#) is progressing despite the complex terrain of the Tell Atlas.
- Expansion works at the Annaba port are designed to [increase mineral export capacity](#) from 2 million tons per year to 10 million tons annually.
- The project includes the construction of a 1,600-meter quay and a 1,400-meter breakwater to [accommodate large mineral vessels](#) up to 80,000 tons.

- **Regional Security Escalation and Narcotrafficking**

- The National People's Army (ANP) and Gendarmerie intercepted over [five quintals of cannabis](#) near the Moroccan border, specifically in Sidi Bel Abbes and Tlemcen.
- Security forces seized [238,506 psychotropic tablets](#) (Pregabalin) in the Bechar military sector, highlighting a growing pharmaceutical smuggling threat.
- State media reports linked Moroccan social unrest and forced evictions to ["Zionist settlement" plots](#) and systemic government corruption in Rabat.

- **State-Led Market Intervention for Eid al-Adha**

- The government confirmed the [importation of 1 million sheep](#) to be distributed 48 hours before the holiday to preserve the national livestock wealth.
- A ban was placed on the [slaughter of imported female sheep](#), which must be redirected to breeding programs to rebuild national herds.
- The state launched the ["Adhahi.dz" digital platform](#) to facilitate sheep purchases and stabilize consumer prices.

- **Infrastructure and Utility Reform**

- President Tebboune ordered the restructuring of **Algerienne des Eaux (ADE)** to [expand service to all municipalities](#) and combat significant water loss through aging distribution networks.
- Modernization of the [Beni Mansour-Bejaia railway](#) reached a sustained rhythm, including the construction of 28 technical structures and three tunnels.

KEY GOVERNANCE TOPICS

Economic Security & Industrial Policy The Algerian government is pivoting toward high-value downstream hydrocarbon processing. The directive to localize plastic precursor production is a direct attempt to enhance [economic security](#) by insulating the domestic industrial base from supply chain shocks. The GICA cement group is also modernizing its export strategy, focusing on [international quality standards](#) (ISO and American

standards) to secure permanent positions in foreign markets.

- Ferial's exclusive mandate for phosphate signifies a consolidation of the mining sector under state-aligned industrial champions.
- The GICA group is expanding into "Katering" and industrial cleaning as part of a diversification strategy to support its core cement operations.

Diplomatic Engagement & Regional Influence

Algeria is actively recalibrating its foreign policy toward the Congo Basin and the Sahel. The visit of the Congolese Foreign Minister, carrying a message from President Denis Sassou Nguesso, underscores a shared [strategic commitment](#) to economic diplomacy and African-led crisis resolution, particularly in Libya. Meanwhile, the farewell reception for the Iranian Ambassador indicates a [stable diplomatic relationship](#) with Tehran as his mission concludes.

Food and Water Security Addressing the "water stress" anticipated during summer months and religious festivals, the government has launched a [water conservation campaign](#) through SEAAL. Governance is also being tested by the logistics of importing one million livestock from countries including [Romania, Spain, and Ireland](#), a massive state-led effort to mitigate inflation and social dissatisfaction.

Social Order and Domestic Stability State messaging is currently focused on protecting the "future of the nation" via strict oversight of [national school examinations](#), warning students against the "illusion of cheating" and the distractions of social media. Concurrently, public service announcements warn of the [dangers of the internet](#) for children and the

threat of fraudulent [multi-level marketing \(MLM\) schemes](#) targeting vulnerable families.

LEGISLATIVE ROUNDUP

Legislative activity was characterized by high-level executive decrees and regulatory updates rather than parliamentary debate. The Council of Ministers served as the primary venue for setting national policy on industry, agriculture, and infrastructure, with a heavy emphasis on the June 2026 legislative elections.

BILLS DISCUSSED/DEBATED:

- **Draft Strategy for Petrochemical Development:** Executive directive to mobilize state resources for plastic raw material localization.
- **National Service Act (Law 14-06):** Mandatory [census registration](#) requirements for citizens born in 2009, enforced by local municipalities.
- **Electoral Law Updates:** The Independent National Election Authority (ANIE) set a strict deadline of [May 18, 2026](#), for the submission of individual signature forms for legislative candidates.

HEARINGS & PRESS EVENTS:

- **Council of Ministers Meeting:** Chaired by President Tebboune, it provided the overarching policy framework for the day, specifically regarding [mining and import logistics](#).
- **Batimatec 2026 Expo:** A commercial and industrial forum where the [GICA group](#) outlined its export and training initiatives.

- **Diplomatic Audiences:** President Tebboune received the [Iranian Ambassador](#) and the [Congolese Minister of Foreign Affairs](#).

DEEP DIVE: TRENDS AND THEMES

The Mining-Railway-Port Nexus Algeria is executing a "grand strategy" to integrate its interior mineral wealth with its maritime export capabilities. By simultaneously funding the Bladel Hadba phosphate mine, the Eastern Mining Railway, and the Annaba port extension, the state is creating a closed-loop [logistics chain](#). This is intended to move the country away from a reliance on liquid hydrocarbons toward a more resilient mineral-based export sector. The technical difficulty of these projects, specifically the [bridge and tunnel construction](#) in the Tell Atlas, suggests a long-term commitment to high-level engineering and international cooperation (specifically with Chinese partners).

Weaponizing Narcotrafficking Narratives

There is a clear trend of using drug seizures to reinforce the narrative of Moroccan state hostility. By reporting on a ["systemic plan"](#) to flood Algeria with cannabis and psychotropics, the government justifies its closed borders and military posture. The addition of "Zionist settlement" rhetoric into reports on Moroccan social unrest suggests Algeria is framing the regional rivalry in [ideological and anti-colonial terms](#), likely to bolster domestic nationalist sentiment.

Technocratic Governance and Digital Surveillance The state is increasingly relying on digital platforms to manage sensitive social interactions. From the ["Adhahi.dz" platform](#) for livestock to the ["Study in Algeria" platform](#) for international students and digital [lost-](#)

[document reporting](#) by the DGSN, Algeria is undergoing a rapid "digitization of the social contract." This allows for more efficient state management but also provides a mechanism for monitoring economic transactions and population movements.

STRATEGIC FORESIGHT

Short Term (1-4 Weeks) We expect a surge in state media coverage surrounding the [import and distribution of sheep](#) as Eid al-Adha approaches to ensure public satisfaction with market prices. Concurrently, the [May 18 deadline](#) for signature forms will likely lead to a culling of minor political candidates for the upcoming legislative elections, consolidating the influence of major pro-state blocs.

Medium Term (1-6 Months) The **Fertial** phosphate mandate will trigger significant capital investment in the East, potentially increasing local employment in Annaba and Tebessa. However, if the restructuring of **Algerienne des Eaux** does not produce immediate improvements in water delivery during the summer heat, [domestic dissatisfaction](#) could manifest in localized protests, despite the government's efforts to modernize the grid.

Long Term (1-5 Years) Algeria's successful completion of the Integrated Phosphate Project would position it as a [leading global fertilizer producer](#), significantly altering the geopolitical power dynamics in North Africa and the Mediterranean. This industrial capacity, combined with a localized petrochemical sector, would create a new "economic fortress" Algeria, less vulnerable to oil price fluctuations but highly dependent on the stability of its [rail and port infrastructure](#).

RECOMMENDATIONS & IMPLICATIONS

For International Policy:

- Diplomatic missions should monitor the **Algeria-Congo partnership** as a signifier of Algeria's renewed ambition to act as a security and economic broker in sub-Saharan Africa.
- The escalation of narco-trafficking rhetoric suggests that the **Algeria-Morocco border** will remain militarized and closed for the foreseeable future, hindering any hopes for Maghreb integration.
- The transition to a mineral-based export economy may offer new opportunities for **Western and Asian partnerships** in technical mining equipment and sustainable extraction technologies.

For Private Sector/Investors:

- **Opportunity:** The mandate to localize **petrochemical precursors** opens a window for joint ventures in plastic manufacturing and chemical engineering.
- **Risk:** The high emphasis on **exclusive rights for state-aligned entities** (like Fertial) indicates that the investment climate in the mining sector remains heavily state-dominated, favoring large-scale bilateral agreements over open market competition.
- **Logistics:** Multinational logistics firms should track the **Annaba port expansion** and railway modernization as indicators of future bulk-commodity throughput capacity in the region.

ABOUT THIS REPORT

Today's Media Trends is a public interest experiment in applying deep thematic trend analysis to television news coverage from around the world to explore how responsibly applied advanced AI can help journalists and scholars better understand the overarching trends, themes and patterns of our global world.

No data is used to train or tune any AI model.

Each morning, in collaboration with the Internet Archive's TV News Archive, we apply Google's Gemini 3 to deeply examine yesterday's coverage from each television news channel to tease out the overarching themes and trends of its news coverage into a richly annotated thematic analysis. Each high-level insight is connected back to the original broadcast, allowing journalists and scholars to understand the dominant themes and trends and instantly click out to the underlying sources for details.

By helping journalists and scholars see the broader trends and patterns of global news coverage, this analysis helps them identify relevant stories and coverage they might not otherwise have encountered and uncover connections, emphases and narrative shifts that enable more comprehensive reporting and deeper, evidence-based research.

This report is entirely machine generated using Gemini 3 and may include errors and omissions. Please verify all findings. No data is used to train or tune any AI model.

For questions or suggestions, please contact kalev.leetaru5@gmail.com. You can also learn more about the GDELT Project at <https://blog.gdeltproject.org/> and the Internet

Archive's TV News Archive at <https://archive.org/details/tv>.