

TODAY'S MEDIA TRENDS

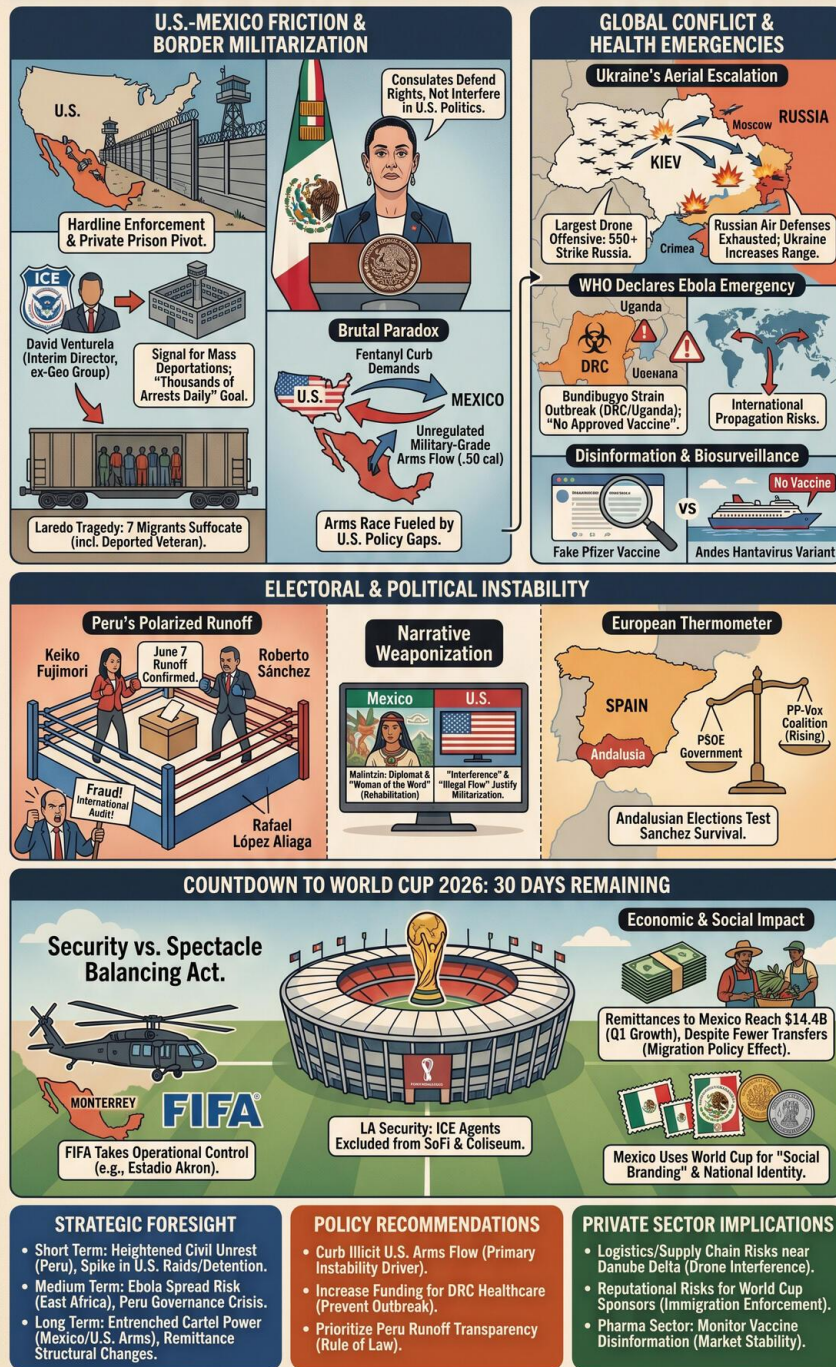
CANALCATORCE

MAY 17, 2026

THE GDELT PROJECT

BORDER MILITARIZATION & GLOBAL ESCALATIONS: MAY 17, 2026 TURNING POINTS

Convergence of Major Public Health, Electoral, and Geopolitical Crises on the Eve of the World Cup.



TODAY'S MEDIA TRENDS

CANALCATORCE

MAY 17, 2026

BORDER MILITARIZATION AND
GLOBAL ESCALATIONS COINCIDE
WITH MAJOR PUBLIC HEALTH AND
ELECTORAL TURNING POINTS

DAY-AT-A-GLANCE

May 17, 2026, is marked by a sharp intensification of friction between the United States and its regional partners, primarily driven by a return to hardline migration enforcement and the appointment of controversial figures to the U.S. security apparatus. The designation of David Venturela as interim director of ICE, a figure with deep ties to private prison conglomerates, signals a pivot toward mass deportation strategies that are already causing diplomatic strain. President Claudia Sheinbaum was forced to publicly deny allegations of Mexican consulate interference in U.S. politics, reflecting a deteriorating relationship as the U.S. ramps up pressure on Mexico regarding both fentanyl flows and the logistical requirements of "mass arrests." This tension is exacerbated by the tragic suffocation of migrants in Laredo, highlighting the human cost of current enforcement gaps.

On the global stage, the conflict in Ukraine has reached a new threshold of intensity with Kiev's largest drone offensive against Russian territory to date, utilizing over 550 drones to strike Moscow and Crimea. This escalation occurs as the World Health Organization (WHO) declares a new Ebola emergency (Bundibugyo strain) in the Democratic Republic of Congo and Uganda, warning of international propagation risks. Meanwhile, Latin American political stability faces a critical test in Peru, where a polarized runoff between Keiko Fujimori and Roberto Sánchez has been formalized amid cries of fraud from the right-wing opposition. These developments converge just 30 days before the 2026 World Cup, where security concerns are being balanced against public spectacle and nationalistic branding in North America.

MAJOR DEVELOPMENTS

U.S. Migration Policy and ICE Leadership Shift

- The Department of Homeland Security appointed [David Venturela](#) as interim director of ICE, replacing Todd Lions. Venturela, a veteran of the "Secure Communities" program and a former executive at Geo Group, is viewed as a key architect for the Trump administration's planned [mass deportation](#) campaign.
- Seven migrants, including three Mexican nationals and three Hondurans, were found [suffocated in a freight car](#) in Laredo, Texas; one victim, Carlos Eduardo Reyes, had been deported in 2025 after living in the U.S. for 26 years.

- President Claudia Sheinbaum denied a CBS report alleging that Mexican consulates are [engaging in U.S. internal politics](#), asserting their role is strictly limited to defending the rights of Mexican nationals.

Ukraine Escalates Aerial Warfare Against Russia

- Ukraine launched its [largest drone attack in a year](#), deploying 556 drones across 14 Russian regions and the Crimean Peninsula.
- The strikes resulted in at least four deaths and significant property damage in the Moscow region, which President Zelensky [justified as a reprisal](#) for previous Russian strikes on Kiev.
- Russian air defenses are reportedly facing [significant exhaustion](#) as Ukraine increases the range and production of its domestic missile and drone programs.

WHO Declares Ebola Emergency

- The WHO declared the [virus Bundibugyo](#) a public health emergency of international importance following an outbreak in the DRC and Uganda that has killed at least 80 people.
- Specialists warn that there is currently [no approved vaccine](#) for this specific strain, though historical protocols involving plasma from recovered patients are being deployed.

Peruvian Presidential Runoff Formalized

- The National Jury of Elections (JNE) confirmed that [Keiko Fujimori \(17.19%\)](#) and Roberto Sánchez (12.03%) will proceed to a runoff on June 7.

- Third-place candidate Rafael López Aliaga has [demanded an international audit](#), alleging irregularities and refusing to recognize the proclamation.

Countdown to World Cup 2026

- With 30 days remaining, FIFA has taken [full operational control](#) of key Mexican stadiums, including Guadalajara's Estadio Akron, forcing local clubs to relocate matches.
- In Los Angeles, authorities clarified that [ICE agents will not](#) participate in the security apparatus for the SoFi Stadium or the LA Coliseum, correcting previous host committee misinformation.

KEY GOVERNANCE TOPICS

Geopolitical Power Dynamics The emergence of an independent candidate in Colombia, described as a ["man of character"](#) and independent of traditional "clans," mirrors the populist surge of Javier Milei in Argentina. In Peru, the runoff between the "dynastic right" (Fujimori) and the "ideological left" (Sánchez) threatens to deepen [regional polarization](#). In Europe, the Andalusian elections in Spain are being treated as a [critical thermometer](#) for the survival of Pedro Sánchez's PSOE government against a rising PP-Vox coalition.

Biosurveillance / Disease Outbreaks The WHO's declaration regarding Ebola Bundibugyo highlights [vulnerabilities in the DRC](#) caused by ongoing armed conflict, which impedes containment. Simultaneously, health authorities are battling [disinformation regarding Hantavirus](#), specifically debunking a viral fake report that Pfizer had developed a vaccine in a single weekend. Real-world PCR testing on [affected cruise ships](#) confirms the

presence of the Andes variant, which lacks an authorized vaccine.

Corruption & Governance The appointment of David Venturela to ICE has triggered [conflict of interest concerns](#) among U.S. House Democrats due to his previous senior roles at Geo Group, a company holding billions in federal detention contracts. In Mexico, the government is using the World Cup as a platform for ["social branding,"](#) launching commemorative stamps and coins to link the event to national identity and community pride.

Economic Security Remittances to Mexico reached [over \\$14.4 billion](#) in the first quarter of 2026, showing 1.4% growth. However, experts note a decrease in the total number of transfers, likely due to [tightened U.S. migration policies](#), though the average amount per transfer remains high, bolstered by H2A agricultural visa holders.

LEGISLATIVE ROUNDUP

Legislative activity this week centered on electoral certifications and internal security restructuring, with significant debate over the legitimacy of the Peruvian vote count and the legality of U.S. detention contract oversight.

BILLS DISCUSSED/DEBATED:

- **Electoral Proclamation of Peru:** The official decree by the JNE finalizing the [June 7 runoff](#) date and dismissing initial appeals for an annulment by the Renovación Popular party.
- **U.S. Border Enforcement Mandates:** Administrative directives within DHS to achieve ["thousands of arrests daily"](#) as part of the renewed mass deportation campaign.

HEARINGS & PRESS EVENTS:

- **Sheinbaum Press Conference:** The Mexican President clarified that consulates are [not political entities](#) and denied receiving any formal diplomatic protest from the U.S. State Department.
- **Andalusia Election Media Briefing:** Regional reports indicate a [contested majority](#) for the PP, with the far-right Vox potentially acting as a kingmaker.
- **DRC Health Ministry Briefing:** Officials stated that despite the lack of vaccines, the [17th Ebola outbreak](#) is manageable through proven epidemiological control methods.

DEEP DIVE: TRENDS AND THEMES

The Weaponization of Regional Narratives

A recurring theme in the day's reporting is the struggle over historical and political narratives. In Mexico, a significant portion of state broadcasting was dedicated to rehabilitating the image of [Malintzin \(La Malinche\)](#), framing her as a diplomat and "woman of the word" rather than a traitor. This cultural re-centering aligns with the Sheinbaum administration's focus on [indigenous sovereignty](#) and linguistic preservation. Conversely, in the U.S., the narrative of Mexican "interference" and "illegal flow" is being used to justify [militarized border responses](#).

Militarization vs. Porous Markets

Analysts pointed out the [brutal paradox](#) of U.S. policy: the same government demanding Mexico curb fentanyl flows facilitates the legal retail sale of [military-grade weaponry](#) (such as .50 caliber rifles) that arm the cartels. This "arms race" between the Mexican state and criminal organizations is fueled by what experts call an

[incapacity or lack of political will](#) in Washington to regulate trans-border armaments flow.

The Vulnerability of Critical Corridors The war in Ukraine has begun to impact secondary global corridors. Russian drone incursions into [Romanian airspace](#) and the Danube delta are disrupting grain exports and local fishing economies. This "geographical isolation," once a benefit for residents, has become a [security concern](#) as civilians feel abandoned by authorities in the face of drifting conflict zones.

STRATEGIC FORESIGHT

Short Term (1-4 Weeks): Expect heightened civil unrest in Peru as Rafael López Aliaga mobilizes supporters against the electoral proclamation. In the U.S., the transition of ICE leadership under Ventura will likely lead to an [immediate spike in workplace raids](#) and detention center occupancy. Security for the World Cup will be tested as [black hawk helicopters](#) begin patrols in Monterrey.

Medium Term (1-6 Months): The Ebola Bundibugyo strain may reach urban centers in East Africa if [cross-border triaging](#) fails, potentially leading to travel restrictions. The outcome of the June 7 Peru runoff will likely result in a [governance crisis](#) regardless of the winner, given the narrow margins and high rejection rates for both candidates.

Long Term (1-5 Years): The continued [militarization of public security](#) in Mexico, combined with the U.S. industry's reliance on unregulated arms sales, suggests a long-term entrenchment of cartel power. Structural changes in [remittance patterns](#) may emerge if U.S. legal pathways (like H2A visas) are restricted under a sustained mass-deportation regime.

RECOMMENDATIONS & IMPLICATIONS

For International Policy:

- Diplomatic channels must address the [illicit arms flow](#) from U.S. retail shops as a primary driver of North American regional instability.
- The WHO declaration necessitates [increased funding](#) for the DRC's overwhelmed healthcare system to prevent a wider continental outbreak.
- Electoral monitors should prioritize the [transparency of the Peru runoff](#) to mitigate the risk of a post-election collapse of the rule of law.

For Private Sector/Investors:

- Logistics and supply chain firms operating near the [Danube delta](#) should prepare for increased operational delays and insurance premiums due to drone interference.
- Retail and hospitality sectors in World Cup host cities face [reputational and legal risks](#) if they become entangled in aggressive immigration enforcement operations during the tournament.
- The pharmaceutical sector should monitor [disinformation trends](#) closely, as false claims about vaccines (e.g., Hantavirus) are impacting public trust and market stability.

ABOUT THIS REPORT

Today's Media Trends is a public interest experiment in applying deep thematic trend analysis to television news coverage from around the world to explore how responsibly applied advanced AI can help journalists and scholars better understand the overarching

trends, themes and patterns of our global world.

No data is used to train or tune any AI model.

Each morning, in collaboration with the Internet Archive's TV News Archive, we apply Google's Gemini 3 to deeply examine yesterday's coverage from each television news channel to tease out the overarching themes and trends of its news coverage into a richly annotated thematic analysis. Each high-level insight is connected back to the original broadcast, allowing journalists and scholars to understand the dominate themes and trends and instantly click out to the underlying sources for details.

By helping journalists and scholars see the broader trends and patterns of global news

coverage, this analysis helps them identify relevant stories and coverage they might not otherwise have encountered and uncover connections, emphases and narrative shifts that enable more comprehensive reporting and deeper, evidence-based research.

This report is entirely machine generated using Gemini 3 and may include errors and omissions. Please verify all findings. No data is used to train or tune any AI model.

For questions or suggestions, please contact kalev.leetaru5@gmail.com. You can also learn more about the GDEL T Project at <https://blog.gdeltproject.org/> and the Internet Archive's TV News Archive at <https://archive.org/details/tv>.