

TODAY'S MEDIA TRENDS

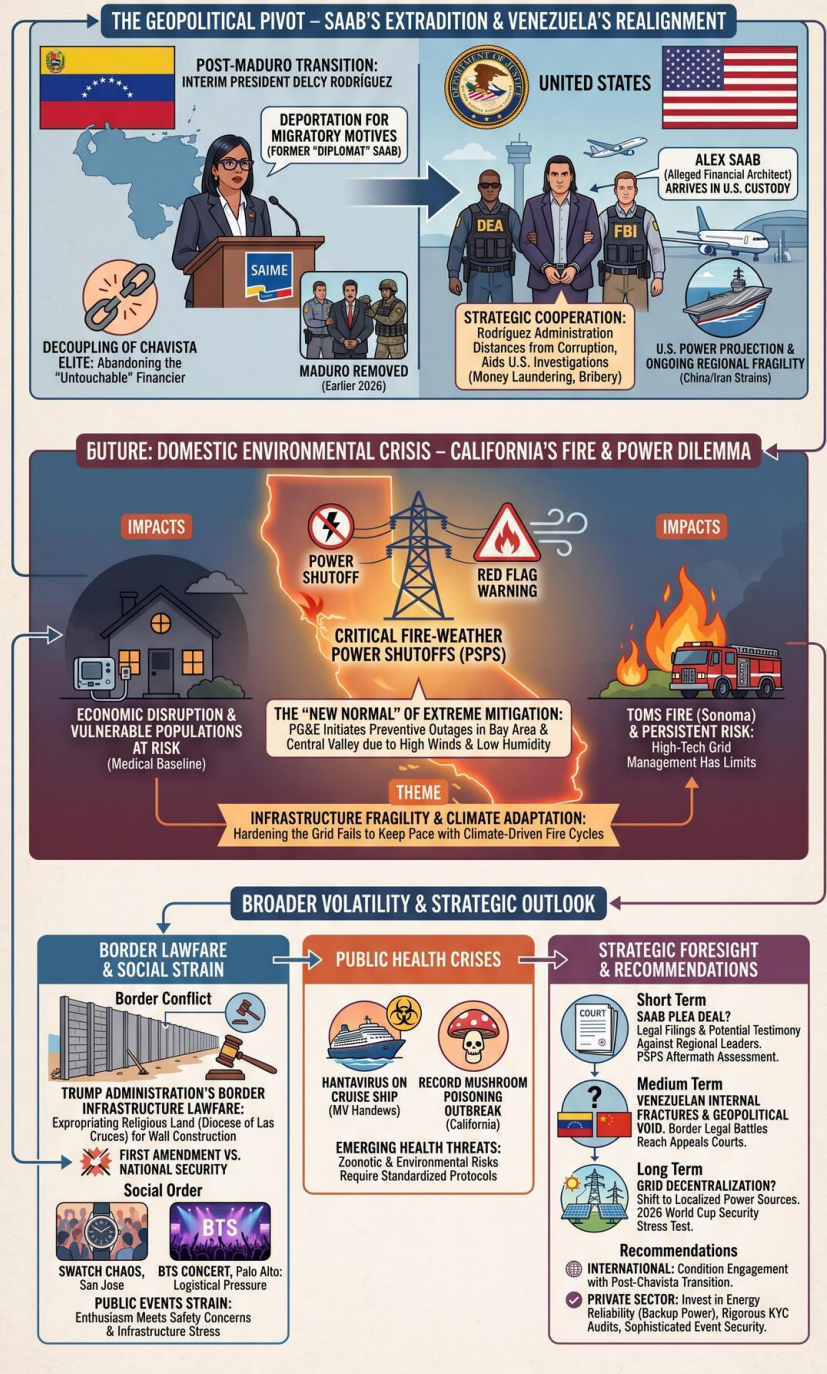
KSTS

MAY 17, 2026

T H E G D E L T P R O J E C T

MAY 17, 2026: A DAY OF GEOPOLITICAL SHIFTS & DOMESTIC VOLATILITY

REPORT NARRATIVE: From the Extradition of Alex Saab to California's Fire-Weather Power Shutoffs, and Beyond.



TODAY'S MEDIA TRENDS

KSTS

MAY 17, 2026

THE EXTRADITION OF ALEX SAAB AMID VENEZUELAN LEADERSHIP TRANSITIONS AND CRITICAL FIRE-WEATHER POWER SHUTOFFS IN CALIFORNIA DEFINE A DAY OF GEOPOLITICAL AND DOMESTIC VOLATILITY.

DAY-AT-A-GLANCE

May 17, 2026, marks a pivotal moment in the normalization of a post-Maduro Venezuela and a period of heightened domestic environmental risk in the United States. The central geopolitical development is the [deportation of Alex Saab](#) to the United States. Saab, a Colombian businessman and alleged financial architect for the Chavista regime, was previously released in a 2023 prisoner exchange but has now been handed back to U.S. authorities by Venezuela's interim president, Delcy Rodríguez. This move follows the earlier [capture and removal](#) of Nicolás Maduro by U.S. forces and signifies a strategic pivot by the Rodríguez administration to distance itself from the previous leadership's corruption while cooperating with U.S. federal investigations into money laundering and bribery.

Domestically, California is facing a severe intersection of infrastructure fragility and extreme weather. Pacific Gas and Electric (PG&E) has initiated [preventive power outages](#) (Public Safety Power Shutoffs) across several counties in the Bay Area and Central Valley due to a high-risk "Red Flag" weather pattern characterized by low humidity and [gusts up to 50 mph](#). This precautionary measure aims to prevent a repeat of historical disasters like the 2018 Camp Fire. Simultaneously, the Trump administration has intensified its border security agenda, initiating [legal proceedings to expropriate](#) religious land in New Mexico, setting the stage for a constitutional clash over religious expression and national security.

MAJOR DEVELOPMENTS

- **Extradition of Alex Saab and Venezuelan Political Realignment**
 - Alex Saab arrived in Miami in the custody of the [DEA and FBI](#) after being expelled by the Venezuelan interim government.
 - Interim President Delcy Rodríguez's administration framed the move as a [deportation for migratory motives](#), signaling a shift in the state's official stance from treating Saab as a "diplomat" to a "simple Colombian citizen."
 - The extradition opens the door for [Saab to testify](#) against his former protector, Nicolás Maduro, and other high-ranking officials currently facing U.S. justice.

- **Northern California Fire Risk and Energy Grid Instability**

- A [Red Flag Warning](#) is in effect through Monday, driven by a pressure gradient causing dangerously dry and windy conditions.
- PG&E issued warnings of [potential supply cuts](#) to mitigate fire risks from electrical equipment failures.
- The "Toms Fire" in Sonoma County, though [contained at 10 acres](#), demonstrated the volatility of the region after a residue pile reignited due to high winds.

- **U.S. Border Infrastructure Lawfare**

- The Trump administration is [suing the Diocese of Las Cruces](#) to seize 14 acres of land near Mount Cristo Rey for border wall construction.
- The Diocese has [rejected a \\$183 offer](#) for the land, citing violations of First Amendment religious protections.

- **Public Health Crises: Hantavirus and Mushroom Poisoning**

- A Canadian citizen tested [positive for Hantavirus](#) after traveling on the MV Handews cruise ship, with over 40 people now under surveillance.
- California is experiencing a record [outbreak of mushroom poisoning](#), with 47 cases and four deaths reported since November, including new cases in Napa County.

KEY GOVERNANCE TOPICS

International Relations & Geopolitical Power Dynamics The U.S. continues to project power in the Western Hemisphere, evidenced by the [return of the USS Gerald Ford](#) after a 326-day deployment that included

operations resulting in the capture of Nicolás Maduro. The relationship with China remains strained, as President Trump's recent [visit to Beijing](#) concluded without a concrete commitment from Xi Jinping regarding the ongoing conflict with Iran or the redirection of Iranian oil trade.

Energy Security & Critical Infrastructure

The ongoing reliance on [Public Safety Power Shutoffs](#) (PSPS) highlights a persistent failure to harden California's electrical grid against climate-driven fire cycles. While these measures protect the state from liability and catastrophic fire, they create significant economic disruption and risks for [medically vulnerable populations](#) who depend on continuous electricity.

Corruption & Governance In Venezuela, the "Free Alex Saab" campaign has been abandoned in favor of [legal pragmatism](#) by the Rodríguez administration. This suggests an internal purge or a "negotiated transition" where elements of the former regime are sacrificed to maintain some level of state continuity and avoid further U.S. military or economic escalation.

Domestic Stability & Social Order Public events are experiencing strain from both enthusiasm and safety concerns. In San Jose, the launch of a [luxury watch collaboration](#) caused such chaos that police intervention was required and sales were suspended. In Palo Alto, the [BTS concert at Stanford](#) drew 50,000 fans, creating significant logistical pressure on the region's infrastructure during a period of high fire risk.

LEGISLATIVE ROUNDUP

Governance activity focused on eminent domain and emergency health protocols. Federal efforts to accelerate border wall

construction have led to aggressive land expropriation filings. Locally, California authorities are reinforcing restrictions on open fires and campfires to prevent man-made disasters during the current weather event.

BILLS DISCUSSED/DEBATED:

- **Eminent Domain Filings (Border Wall):** Federal lawsuits to [expropriate 14 acres](#) from the Diocese of Las Cruces for "barriers and technology" to secure the border.
- **Medical Baseline Program Expansion:** Mention of the [eligibility for additional notifications](#) for power shutoffs for patients with electricity-dependent health needs.

HEARINGS & PRESS EVENTS:

- **Venezuela SAIME Statement:** A brief communique confirming the [deportation of Alex Saab](#), citing public knowledge of his crimes in the U.S.
- **PG&E PSPS Briefing:** Public notices regarding [potential outages](#) starting Sunday through Monday for multiple counties.

DEEP DIVE: TRENDS AND THEMES

The Decoupling of the Chavista Elite The abandonment of Alex Saab by Delcy Rodríguez indicates a profound fracture in the Chavista movement. For years, Saab was the regime's "untouchable" financier; his delivery to the U.S. suggests that the [interim government](#) is prioritizing its own survival and potential legitimacy over the protection of Maduro-era secrets. This "lawfare" within the Venezuelan state suggests Rodríguez is positioning herself as a cooperative partner to

the U.S. in exchange for easing sanctions or maintaining her "interim" status.

Normalization of "Extreme" Mitigation In California, preventive power outages are no longer an "emergency" measure but a [standard operational protocol](#). This trend shows the state's adaptation to a permanent state of climate risk. However, the continued occurrence of fires, such as the Sonoma fire starting from [residue piles from April](#), highlights that even high-tech grid management cannot account for all variables in a drying landscape.

The Militarization of Immigration Enforcement The U.S. focus on [human trafficking](#) in Texas and the aggressive seizure of land for the border wall reflect a hardline national security posture that increasingly prioritizes physical barriers over civil or religious objections. The use of federal agents to [escort financial figures](#) like Saab from international airports directly into federal custody further illustrates the integration of anti-corruption and border security efforts.

STRATEGIC FORESIGHT

Short Term (1-4 Weeks): Expect significant legal filings in the Alex Saab case as U.S. prosecutors attempt to secure a plea deal in exchange for testimony against other regional leaders. In California, the immediate aftermath of the Red Flag weather will reveal if the [PG&E outages](#) successfully prevented ignitions or if the economic fallout from the outages triggers new regulatory scrutiny. Public health officials will likely expand [Hantavirus screening](#) to other cruise lines operating in North American waters.

Medium Term (1-6 Months): The Venezuelan interim government will likely face internal challenges as the "Maduro-

loyalist" faction reacts to Saab's extradition. We may see a [resurgence of Iranian or Chinese](#) influence as they seek to fill the void left by Maduro's removal, particularly if the Rodríguez administration cannot secure immediate U.S. economic relief. The Diocese of Las Cruces case will likely reach a federal appeals court, serving as a landmark test for the [First Amendment](#) against border infrastructure expansion.

Long Term (1-5 Years): The successful prosecution of Saab could lead to the dismantling of several multinational money-laundering networks across Latin America. Structurally, the California energy grid may undergo a radical decentralization if [PSPS events](#) continue to be the primary defense against fire, as municipalities and the private sector seek more reliable, localized power sources. The 2026 World Cup, for which [Telemundo 48](#) is the official channel, will serve as a massive security and infrastructure stress test for the San Francisco Bay Area and Mexico.

RECOMMENDATIONS & IMPLICATIONS

For International Policy:

- The U.S. must prepare for a "post-Chavista" transition in Venezuela that may still include authoritarian elements; engagement with Delcy Rodríguez should be conditioned on [demonstrable anti-corruption](#) steps beyond just extraditing Saab.
- Security architecture in the Middle East remains fragile; the lack of a [Chinese agreement on Iran](#) suggests that the U.S. may need to maintain a high carrier presence in the region despite the USS Gerald Ford's return.

- Cross-border health protocols for cruise ships need standardization to prevent [Hantavirus or similar zoonotic](#) outbreaks from becoming regional pandemics.

For Private Sector/Investors:

- **Energy Reliability:** Companies in Northern California should invest in [backup power systems](#) and battery storage, as PG&E's preventive outages are now a semi-permanent feature of the operating environment.
- **Compliance Risk:** The Saab extradition signals that federal investigations into [Latin American financial networks](#) are intensifying; businesses with exposure to Venezuelan or Colombian commodity markets must conduct rigorous "know your customer" (KYC) audits.
- **Consumer Sentiment:** High-demand luxury and cultural events (e.g., [Swatch launches](#), BTS concerts) require sophisticated private security and crowd-management plans to avoid liability and store closures.

ABOUT THIS REPORT

Today's Media Trends is a public interest experiment in applying deep thematic trend analysis to television news coverage from around the world to explore how responsibly applied advanced AI can help journalists and scholars better understand the overarching trends, themes and patterns of our global world.

No data is used to train or tune any AI model.

Each morning, in collaboration with the Internet Archive's TV News Archive, we apply Google's Gemini 3 to deeply examine

yesterday's coverage from each television news channel to tease out the overarching themes and trends of its news coverage into a richly annotated thematic analysis. Each high-level insight is connected back to the original broadcast, allowing journalists and scholars to understand the dominate themes and trends and instantly click out to the underlying sources for details.

By helping journalists and scholars see the broader trends and patterns of global news coverage, this analysis helps them identify relevant stories and coverage they might not otherwise have encountered and uncover

connections, emphases and narrative shifts that enable more comprehensive reporting and deeper, evidence-based research.

This report is entirely machine generated using Gemini 3 and may include errors and omissions. Please verify all findings. No data is used to train or tune any AI model.

For questions or suggestions, please contact kalev.leetaru5@gmail.com. You can also learn more about the GDEL T Project at <https://blog.gdeltproject.org/> and the Internet Archive's TV News Archive at <https://archive.org/details/tv>.