

TODAY'S MEDIA TRENDS

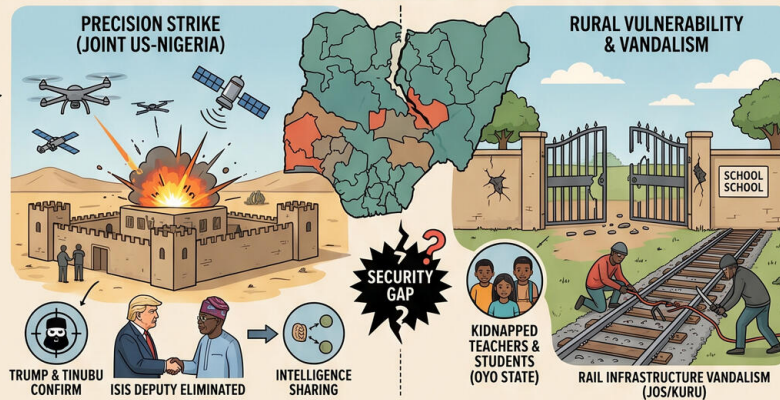
CHANNELSTV

MAY 18, 2026

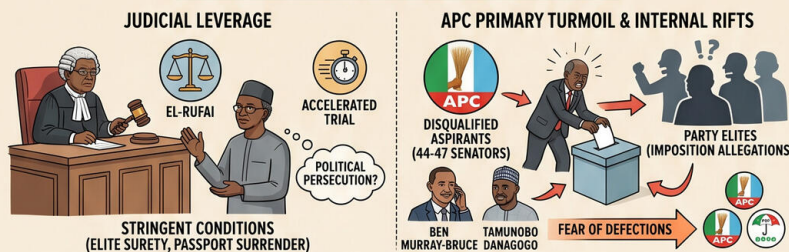
THE G D E L T P R O J E C T

NIGERIA: SECURITY FRACTURES & POLITICAL LAWFARE AMIDST GLOBAL SHOCKS (MAY 18, 2026)

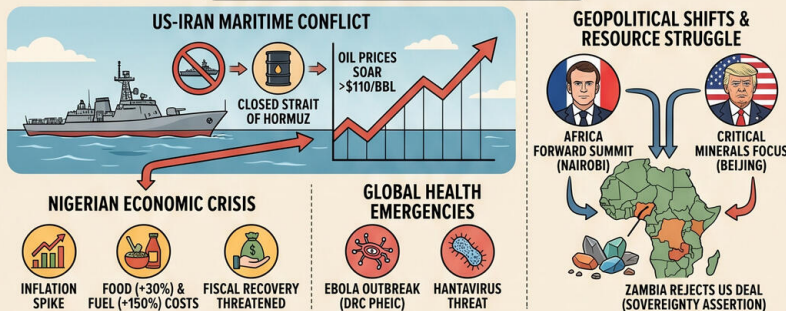
THE DUALITY OF SECURITY: HIGH-LEVEL SUCCESS VS. LOCAL FAILURE



POLITICAL LAWFARE & GOVERNANCE STRAINS



GLOBAL SHOCKS & ECONOMIC IMPACT



STRATEGIC FORESIGHT, REFORMS & RECOMMENDATIONS



TODAY'S MEDIA TRENDS

CHANNELSTV

MAY 18, 2026

NIGERIA FACES DOMESTIC
SECURITY FRACTURES AND
POLITICAL LAWFARE AMIDST
GLOBAL ENERGY SHOCKS AND
REGIONAL HEALTH EMERGENCIES

DAY-AT-A-GLANCE

May 18, 2026, was defined by a volatile intersection of high-stakes security operations, aggressive "lawfare" against political elites, and the deepening impact of a US-Iran maritime conflict on the Nigerian economy. The joint US-Nigeria elimination of [ISIS deputy leader Abu Bilal Al-Minuki](#) in the Lake Chad Basin served as a significant counter-terrorism victory, yet it was immediately overshadowed by domestic security failures, specifically the [kidnapping and killing of teachers](#) in Oyo State. This duality highlights a persistent gap between high-level precision strikes and the state's inability to secure rural communities and educational institutions.

In the judicial sphere, the granting of [bail to former Kaduna Governor Nasir El-Rufai](#) under exceptionally stringent conditions signals an escalation in the use of the legal system to manage high-profile political figures.

Concurrently, the All Progressives Congress (APC) faced internal fragmentation as it [disqualified dozens of senatorial aspirants](#) ahead of the 2027 elections, sparking accusations of candidate imposition. Externally, Nigeria is grappling with a second-order economic crisis; while inflation showed signs of cooling early in the year, the [closure of the Strait of Hormuz](#) due to the US-Iran conflict has driven crude prices to \$110, threatening to destabilize the nation's fiscal recovery and increase the cost of imported inputs.

MAJOR DEVELOPMENTS

- **Elimination of ISIS Global Deputy Leader:**
 - US President Donald Trump and Nigerian President Bola Tinubu confirmed the [killing of Abu Bilal Al-Minuki](#), described as the second-most-ranked ISIS leader globally, during a joint intelligence-driven operation in the Lake Chad Basin.
 - The operation involved [months of surveillance](#) and US-provided satellite intelligence, while Nigerian "boots on the ground" executed the final assault on the terrorist compound.
 - Skeptics within the security community noted that [Manuki was previously declared dead](#) in 2024, highlighting the "fog of war" and the frequent recycling of aliases among insurgent commanders.

- **Nasir El-Rufai Granted Stringent Bail:**

- The Federal High Court in Abuja granted bail to former Governor Nasir El-Rufai in the sum of [100 million Naira](#) following his prosecution for alleged national security breaches, specifically the [interception of phone conversations](#) belonging to the National Security Advisor.
- The bail conditions were noted as unusually severe, requiring a [Grade Level 17 civil servant](#) surety residing in elite Abuja districts and the surrender of all international passports.
- An accelerated trial has been ordered, as supporters of the former governor characterize the case as [purely political persecution](#).

- **APC Senatorial Primary Turmoil:**

- The APC leadership disqualified [44 to 47 senatorial aspirants](#), including high-profile figures like Ben Murray-Bruce and Tamunobo Danagogo, citing failure to secure clearance under party guidelines.
- The move has intensified internal divisions, with several [incumbents losing their seats](#) and allegations emerging of "imposition" by party elites in Lagos, Rivers, and Ogun states.
- President Tinubu has urged members to [embrace sportsmanship](#), but fears of mass defections to opposition parties like the PRP and ADC are rising.

- **Global Health Emergencies (Ebola and Hantavirus):**

- The WHO declared the Ebola outbreak in the DRC a [public health emergency of international concern](#) (PHEIC), with at least 100 reported deaths and cases spreading into Uganda.
- A secondary global threat, the [Hantavirus \(Andes virus\)](#), has triggered international contact tracing after an outbreak on the cruise ship *MV Hondius*, leading to quarantines in the Netherlands.
- Zambia made a strategic move by [rejecting a \\$2 billion health deal](#) with the US, citing unacceptable clauses regarding mining access and sensitive data sharing.

- **Impact of US-Iran Conflict on Nigeria:**

- The ongoing war between the US and Iran has resulted in a [blockade of Iranian ports](#) and the closure of the Strait of Hormuz, driving global oil prices past \$110 per barrel.
- Economic analysts warn that this "Middle East crisis" is [raising food prices by 30%](#) and fuel costs by up to 150% in fragile economies like Somalia and Nigeria.
- The conflict has disrupted the "breather" Nigeria enjoyed in early 2026, where [inflation had decelerated](#) to the 15% range before the March/April spike.

KEY GOVERNANCE TOPICS

Lawfare and Judicial Independence: The El-Rufai case and the [arrest of social media activist "Justice Crack"](#) suggest a tightening of control over dissent. The judiciary is being tested as it sets [highly restrictive bail terms](#)

that could effectively serve as pre-trial detention for political rivals.

Critical Infrastructure Vulnerability:

Massive [vandalism of rail assets](#) in the Jos/Kuru area highlights a "wickedness" and lack of community ownership of state property. Despite the Nigeria Railway Corporation's attempts to secure the lines, [syndicates continue to cut and sell](#) high-value rail panels, undermining the nation's multi-billion dollar transport investments.

Tax Reform and Fiscal Stability:

Implementation of the [2025 Tax Act](#) is underway, with the creation of the Nigeria Revenue Service (NRS). Reforms aim for [consolidation of multiple taxes](#) (reducing them from over 70 in some states) to improve the investment climate and transparency through digital tools.

Geopolitical Power Dynamics: The "[Africa Forward Summit](#)" in Nairobi saw French President Emmanuel Macron pledge 23 billion Euros, signaling a shift in France's strategy from the Sahel toward Anglophone Africa. Simultaneously, US President Trump's visit to Beijing focused on [rare earth elements](#) largely mined in Africa, placing the continent at the center of a superpower resource struggle.

Security Architecture Failure: While the military celebrates [precision airstrikes in Borno](#), rural security continues to fail. The [abduction of students and teachers](#) in Oyo State and the [killing of one teacher](#) by abductors underscores a "big gap" in intelligence sharing and local protection.

LEGISLATIVE ROUNDUP

Legislative activity focused on the solidification of new tax frameworks and the

ongoing debate over decentralizing police authority to manage local crises.

- **Nigerian Tax Administration Act 2025:** Sets new protocols for [tax refund processing](#), requiring payments within 90 days (30 for VAT) and establishing dedicated refund accounts to improve taxpayer trust.
- **Electoral Act 2026 Amendment:** Section 32 and 137 were highlighted in court and political discourse; notably, legal arguments were made that [term-limit bars cannot apply retroactively](#) to candidates who previously held office before the amendment.
- **State Police Reform:** President Tinubu and the Senate President signaled [accelerating the enactment of state police laws](#) following the recent spike in mass kidnappings in Oyo and Plateau.
- **Oyo State Security Review:** Governor Makinde convened a [security briefing](#) where he sympathized with victims and announced the launch of a new "violent crime response unit" to bridge intelligence gaps.
- **NRS Journal of Tax Studies Call for Papers:** The NRS Research Department invited scholars to submit work on [digital finance and tax reforms](#) to shape future policy via academic credibility.

DEEP DIVE: TRENDS AND THEMES

The Evolution of Combined Operations:

The Al-Minuki operation represents a [shift toward "combined operations"](#) where the US provides the high-tech reconnaissance (drones, satellite) and Nigeria provides the infantry. This model suggests a deeper

reliance on US Africom as regional threats like ISIS and ISWAP merge their command structures. However, the [announcement of the strike by Trump first](#) indicates a power imbalance in the partnership, with US political interests driving the messaging.

Resource Conflict Reframing: There is a growing narrative shift regarding violence in the North Central region. Traditionally viewed as "farmer-herder" clashes, analysts and residents now point to [land grabbing and mineral wealth](#) (Tin, Zinc, Columbite) as the true drivers. Violence is increasingly concentrated around [mining sites in Plateau State](#), suggesting that displacement is a precursor to illegal extraction by bandit syndicates.

Economic "Adaptability" vs. External Shocks: Lagos State officials describe their [4.44 trillion Naira budget](#) as "adaptive," but the macro reality is dictated by the [US-Iran naval conflict](#). The Nigerian economy is essentially being held hostage by global shipping costs and energy prices, rendering internal fiscal reforms less effective than anticipated by the [Ministry of Economic Planning](#).

STRATEGIC FORESIGHT

Short Term (1-4 Weeks): Expect [civil unrest and protests in Oyo State](#) as teachers continue to march against insecurity. The APC will likely face a wave of "pre-litigation" filings from [disqualified senatorial aspirants](#) seeking to overturn primary results.

Medium Term (1-6 Months): The [Dangote Cement listing on the London Stock Exchange](#) in September will serve as a bellwether for international confidence in Nigerian capital markets. If global oil prices remain above \$100 due to the Iran conflict, the CBN will

likely be forced into [further interest rate hikes](#) to manage imported inflation.

Long Term (1-5 Years): The rejection of US health aid by Zambia and the [Macron "Africa Forward"](#) initiative suggest a structural shift in how African states negotiate with Western powers, moving toward "partnership of equals" based on [critical mineral sovereignty](#). Nigeria's transition to the NRS could permanently broaden the tax base if the digitalization of the [civil service workforce](#) continues to improve accountability.

RECOMMENDATIONS & IMPLICATIONS

For International Policy:

- The US-Nigeria security partnership must ensure that [intelligence support](#) translates to local community safety, not just high-value target eliminations, to avoid public backlash.
- The WHO should prioritize [border screening capacity in West Africa](#) as the Ebola outbreak in the DRC shows high regional transmission risk.
- Global mineral supply chains should prepare for [more assertive negotiations](#) from African states following the Zambia precedent.

For Private Sector/Investors:

- Supply chain managers must hedge against [rising shipping and fuel costs](#) as the Strait of Hormuz closure appears prolonged.
- Investors in Nigeria should monitor the [NRS implementation](#) to take advantage of new tax refund and set-off provisions which improve corporate liquidity.

- Infrastructure firms should anticipate increased demand for [solar energy projects](#) as the state and private sectors move to insulate themselves from the unreliable national grid.

ABOUT THIS REPORT

Today's Media Trends is a public interest experiment in applying deep thematic trend analysis to television news coverage from around the world to explore how responsibly applied advanced AI can help journalists and scholars better understand the overarching trends, themes and patterns of our global world.

No data is used to train or tune any AI model.

Each morning, in collaboration with the Internet Archive's TV News Archive, we apply Google's Gemini 3 to deeply examine yesterday's coverage from each television news channel to tease out the overarching themes and trends of its news coverage into a

richly annotated thematic analysis. Each high-level insight is connected back to the original broadcast, allowing journalists and scholars to understand the dominate themes and trends and instantly click out to the underlying sources for details.

By helping journalists and scholars see the broader trends and patterns of global news coverage, this analysis helps them identify relevant stories and coverage they might not otherwise have encountered and uncover connections, emphases and narrative shifts that enable more comprehensive reporting and deeper, evidence-based research.

This report is entirely machine generated using Gemini 3 and may include errors and omissions. Please verify all findings. No data is used to train or tune any AI model.

For questions or suggestions, please contact kalev.leetaru5@gmail.com. You can also learn more about the GDEL Project at <https://blog.gdelproject.org/> and the Internet Archive's TV News Archive at <https://archive.org/details/tv>.