

TODAY'S MEDIA TRENDS

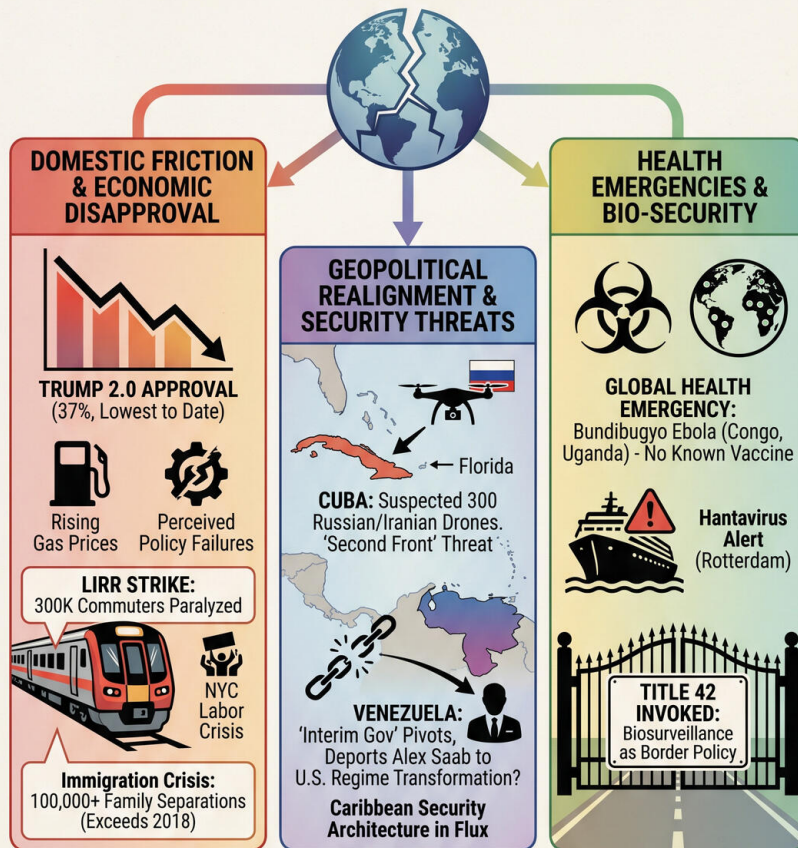
KSTS

MAY 18, 2026

T H E G D E L T P R O J E C T

CONVERGENCE OF CRISES:

The U.S. Landscape, May 2026



STRATEGIC FORESIGHT & IMPLICATIONS

SHORT TERM
(1-4 Weeks)



Heightened Military Activity in Florida Straits. LIRR Strike
Economic Loss Risk.
WHO Escalation?

MEDIUM TERM
(1-6 Months)



Mid-term Referendum on Economy & 'Law and Order'.
Alex Saab Trial Revelations.
Legislative Stalemate Risk

LONG TERM
(1-5 Years)



'Super El Niño' Climate Extremes.
Decades-long Judicial 'Hangover' from Separations

RECOMMENDATIONS & KEY TAKEAWAYS



FOR INTERNATIONAL POLICY & SECURITY
Clarify Stance on Venezuela's Interim Gov.
Collaborative Air-Defense for Drone Threat.
Prioritize Bundibugyo Vaccine Funding



FOR PRIVATE SECTOR & INVESTORS
Avoid Volatile Caribbean Maritime Logistics.
Plan for H-1B/Healthcare Workforce Risks.
Hedge Against Oil Market Destabilization

TODAY'S MEDIA TRENDS

KSTS

MAY 18, 2026

THE UNITED STATES FACES A CONVERGENCE OF DOMESTIC ECONOMIC DISAPPROVAL, AN ESCALATING IMMIGRATION CRISIS INVOLVING OVER 100,000 FAMILY SEPARATIONS, AND HEIGHTENED NATIONAL SECURITY THREATS FROM SUSPECTED CUBAN DRONE ACQUISITIONS.

DAY-AT-A-GLANCE

May 18, 2026, was defined by a critical intersection of domestic political instability and escalating geopolitical tensions in the Caribbean. The second Trump administration is grappling with its [lowest approval ratings](#) to date, as 76% of voters express deep concern over an economy marked by rising gas prices and perceived policy failures. This domestic friction is compounded by a labor crisis in New York, where a [historic strike](#) of the Long Island Railroad has paralyzed transit for 300,000 daily commuters. Simultaneously, the administration has doubled down on hardline immigration tactics, with new reports estimating that over [100,000 children have been separated](#) from their parents—a figure

that significantly exceeds the controversial "zero tolerance" benchmarks of 2018.

On the international front, the security architecture of the Western Hemisphere is shifting rapidly. The "interim government" of Venezuela, led by Delcy Rodriguez, has fundamentally pivoted away from the Maduro era by [deporting financier Alex Saab](#) to the United States, suggesting a collapse or total transformation of the former regime. Meanwhile, intelligence reports alleging that Cuba has acquired [300 drones from Russia and Iran](#) for potential strikes on U.S. soil have triggered a diplomatic and military alert. This occurs against the backdrop of a new [Ebola outbreak](#) in Africa involving a rare strain with no known vaccine, prompting the immediate invocation of Title 42 to restrict travel.

MAJOR DEVELOPMENTS

• Escalating Domestic Immigration Crisis:

- Analysis from the Brookings Institution indicates that 100,000 separations have occurred, with [75% involving U.S. citizen children](#).
- Public outcry has intensified following the [denial of humanitarian parole](#) for the parents of a 12-year-old girl requiring urgent neurosurgical follow-up in Texas.
- Health professionals are reporting a [chilling effect](#) on the medical workforce due to the arrest of foreign-born doctors by ICE.

- **Caribbean Security Realignment:**

- Cuba is suspected of discussing plans to use [military drones against targets](#) in Guantanamo and Key West.
- Major shipping lines have [suspended operations with Cuba](#) following new U.S. executive orders, threatening to collapse up to 60% of the island's maritime trade.
- The deportation of Alex Saab is being framed as a [strategic betrayal](#) by the Delcy Rodriguez administration to distance itself from the captured Nicolás Maduro.

- **Global Health Emergencies:**

- The WHO has declared a global health emergency regarding the [Bundibugyo Ebola strain](#) in Congo and Uganda.
- A cruise ship affected by [Hantavirus has docked in Rotterdam](#) for disinfection after the deaths of three passengers and alerts across 20 countries.

- **Infrastructure and Climate Risks:**

- New York's MTA faces a total [suspension of LIRR services](#) as 3,500 workers strike over wages and healthcare.
- PG&E has initiated [preemptive power cuts](#) across Northern California due to extreme wind-driven fire risks.
- Meteorologists warn of a ["Super El Niño"](#) developing between May and July 2026, which could produce the strongest climatic extremes of the century.

KEY GOVERNANCE TOPICS

Geopolitical Power Dynamics & International Relations

- The regional balance of power is in flux following the [capture of Nicolás Maduro](#) and Cilia Flores earlier in 2026. The subsequent Delcy Rodriguez "interim" government is actively utilizing "lawfare" to purge Maduro-era loyalists, signaling a desperate attempt to normalize relations with Washington by [handing over Alex Saab](#).
- The reported presence of [Shahed-136 drones](#) in Cuba suggests a deepening of the Russia-Iran-Cuba military axis, providing these actors with a "second front" capability near U.S. shores.

Biosurveillance & Public Health

- Biosurveillance systems are on high alert for the [Bundibugyo Ebola virus](#), which lacks the global vaccine stocks available for previous outbreaks. The [CDC confirmed infection](#) of at least one U.S. doctor, necessitating a high-stakes medical evacuation to Germany.
- Domestic health trends show a [spike in head and neck cancers](#) linked to HPV, leading medical experts to advocate for expanded pediatric immunization as a primary preventative measure.

Labor & Industry

- Critical infrastructure in the Northeast is under pressure as [LIRR negotiations failed](#). Governor Kathy Hochul has blamed the Trump administration for interrupting mediation, turning a local labor dispute into a [partisan political flashpoint](#).

- In California, new "MICO" legislation has made [home-based food businesses permanent](#) in Contra Costa County, aiming to reduce barriers for micro-entrepreneurs in the food sector.

National Security & Cybersecurity

- The use of [Title 42 to restrict travel](#) from Ebola-affected nations highlights the administration's continued reliance on health-based border closures as a dual-purpose national security tool.
- Security forces in Mexico are struggling with "domestic terrorism" as a [family massacre in Puebla](#) claimed 10 lives, including an infant, highlighting the breakdown of order in rural regions.

LEGISLATIVE ROUNDUP

Governance today was dominated by executive actions regarding trade sanctions and health-related border controls, alongside significant judicial rulings in high-profile criminal cases.

• **BILLS & POLICIES DISCUSSED:**

- **Title 42 Invocation:** Re-implemented to [restrict entry](#) from Congo, Uganda, and South Sudan due to Ebola.
- **Cuba Maritime Order:** An [executive order](#) expanding trade sanctions, resulting in the withdrawal of major global shipping carriers from Cuban ports.
- **MICO Permanent Program:** Contra Costa County [codified micro-enterprise food kitchen](#) regulations into permanent law.

• **HEARINGS & PRESS EVENTS:**

- **Alex Saab Arraignment:** A Miami court [heard charges](#) of money laundering and corruption against the former Maduro ally.
- **Mangione Evidence Ruling:** A judge [affirmed the admissibility](#) of a weapon and notebook in the United Healthcare CEO murder trial.
- **Díaz-Canel Statement:** The Cuban leader asserted a ["legitimate right to defense"](#) in response to reports of drone acquisitions.

DEEP DIVE: TRENDS AND THEMES

The Paradox of Trump 2.0 Approval

Despite the administration's aggressive posture on immigration and foreign policy, [voter disapproval](#) has reached a critical threshold. The 37% approval rating suggests that the "base" is no longer unified, specifically as [republican support dropped](#) eight points in a single month. The data indicates that economic anxiety—particularly over [gas prices](#) and perceived failures in the Iran nuclear renegotiations—is outweighing the ideological wins of border enforcement.

The "Second Front" in the Caribbean

The simultaneous reports of [Russian drones in Cuba](#) and the political upheaval in Venezuela represent a major reorganization of Caribbean geopolitics. The Venezuelan "interim" government is essentially [liquidating Maduro's network](#) to survive, while Cuba is moving toward a more overt military deterrence posture. This "second front" forces U.S. Northern Command to divert resources from European or Pacific theaters to monitor

potential [low-cost drone swarms](#) only 90 miles from Florida.

Biosurveillance as Border Policy

The Bundibugyo Ebola outbreak provides the administration with the "medical necessity" to [re-institutionalize Title 42](#). This creates a precedent where biosurveillance is inextricably linked to immigration policy. However, the [detention of foreign doctors](#) creates a strategic vulnerability, as the U.S. health system relies on international personnel to fill vacancies in rural and high-need areas.

STRATEGIC FORESIGHT

Short Term (1-4 Weeks): Expect heightened military activity in the Florida Straits as the U.S. Navy and Coast Guard conduct "freedom of navigation" or surveillance operations in response to the [Cuban drone reports](#). Domestically, the [LIRR strike](#) could lead to significant regional economic losses if a deal isn't reached by the next "rush hour" window. The WHO will likely escalate the [Ebola status](#) if cases appear in major transit hubs.

Medium Term (1-6 Months): The [Mangione trial](#) in September and the [November mid-term elections](#) will serve as a referendum on the administration's "law and order" and economic platforms. If gas prices do not stabilize, the 64% disapproval of the [economy](#) will likely result in a legislative stalemate or loss of Congressional control. The Alex Saab trial may reveal [classified details](#) of Maduro's former financing, potentially implicating other regional leaders.

Long Term (1-5 Years): The ["Super El Niño"](#) will likely trigger structural changes to global food supply chains and disaster response budgets. The 100,000+ family [separations](#) will

create a decades-long judicial and social "hangover," potentially leading to massive class-action settlements or structural changes to the citizenship rights of children in mixed-status families.

RECOMMENDATIONS & IMPLICATIONS

For International Policy:

- The U.S. must clarify its stance on the [Delcy Rodriguez interim government](#) in Venezuela; failure to capitalize on the Saab deportation could miss a window for total regional realignment.
- The "drone threat" in Cuba requires a [collaborative air-defense](#) strategy with Caribbean partners to prevent asymmetric provocations.
- Global health funding should prioritize a vaccine for the [Bundibugyo strain](#) to prevent a pandemic that could necessitate permanent border closures.

For Private Sector/Investors:

- **Supply Chain Risk:** Maritime logistics involving the Caribbean are [highly volatile](#); shipping to/from Cuba or Venezuela should be avoided or heavily insured.
- **Workforce Stability:** Firms relying on [H-1B or specialty visas](#) (particularly in healthcare) face high "ICE-intervention" risks; contingency planning for critical personnel is essential.
- **Energy Sector:** Dissatisfaction with [fuel prices](#) and Iran policy suggests continued volatility in oil markets; investors should hedge against further destabilization in Middle East negotiations.

ABOUT THIS REPORT

Today's Media Trends is a public interest experiment in applying deep thematic trend analysis to television news coverage from around the world to explore how responsibly applied advanced AI can help journalists and scholars better understand the overarching trends, themes and patterns of our global world.

No data is used to train or tune any AI model.

Each morning, in collaboration with the Internet Archive's TV News Archive, we apply Google's Gemini 3 to deeply examine yesterday's coverage from each television news channel to tease out the overarching themes and trends of its news coverage into a richly annotated thematic analysis. Each high-level insight is connected back to the original broadcast, allowing journalists and scholars to understand the dominate themes and trends

and instantly click out to the underlying sources for details.

By helping journalists and scholars see the broader trends and patterns of global news coverage, this analysis helps them identify relevant stories and coverage they might not otherwise have encountered and uncover connections, emphases and narrative shifts that enable more comprehensive reporting and deeper, evidence-based research.

This report is entirely machine generated using Gemini 3 and may include errors and omissions. Please verify all findings. No data is used to train or tune any AI model.

For questions or suggestions, please contact kalev.leetaru5@gmail.com. You can also learn more about the GDEL T Project at <https://blog.gdel tproject.org/> and the Internet Archive's TV News Archive at <https://archive.org/details/tv>.