

REVISIONS				
ZONE	REV.	DESCRIPTION	DATE	APPROVED
	A	Initial Release	2023-02-10	HA
	02	Initial Production Release	2023-02-10	HA
	03	Updates External Connector	2023-02-28	HA

MODEL NUMBER FORMAT:


aaaaa-bbb-cccc-ddddd-ee-fff-ggg

- aaaaa* - Sensor Model
- bbb* - Revision
- cccc* - Beam Config
- dddd* - Ethernet Type, Special Features
- ee* - Baseplate, Cap
- fff* - Firmware Version
- ggg* - Miscellaneous

Table of Contents	
Model Number	Sheet
OSDom-07 <i>b-cccc-ddddd-XX-fff-ggg</i>	2-3
OSDom-07 <i>b-cccc-ddddd-BX-fff-ggg</i>	4

PROPRIETARY AND CONFIDENTIAL

THE INFORMATION CONTAINED IN THIS DRAWING IS THE SOLE PROPERTY OF OUSTER INC. ANY REPRODUCTION IN PART OR AS A WHOLE WITHOUT THE WRITTEN PERMISSION OF OUSTER INC IS PROHIBITED.



Ouster, Inc.
350 Treat Ave
San Francisco, CA 94110

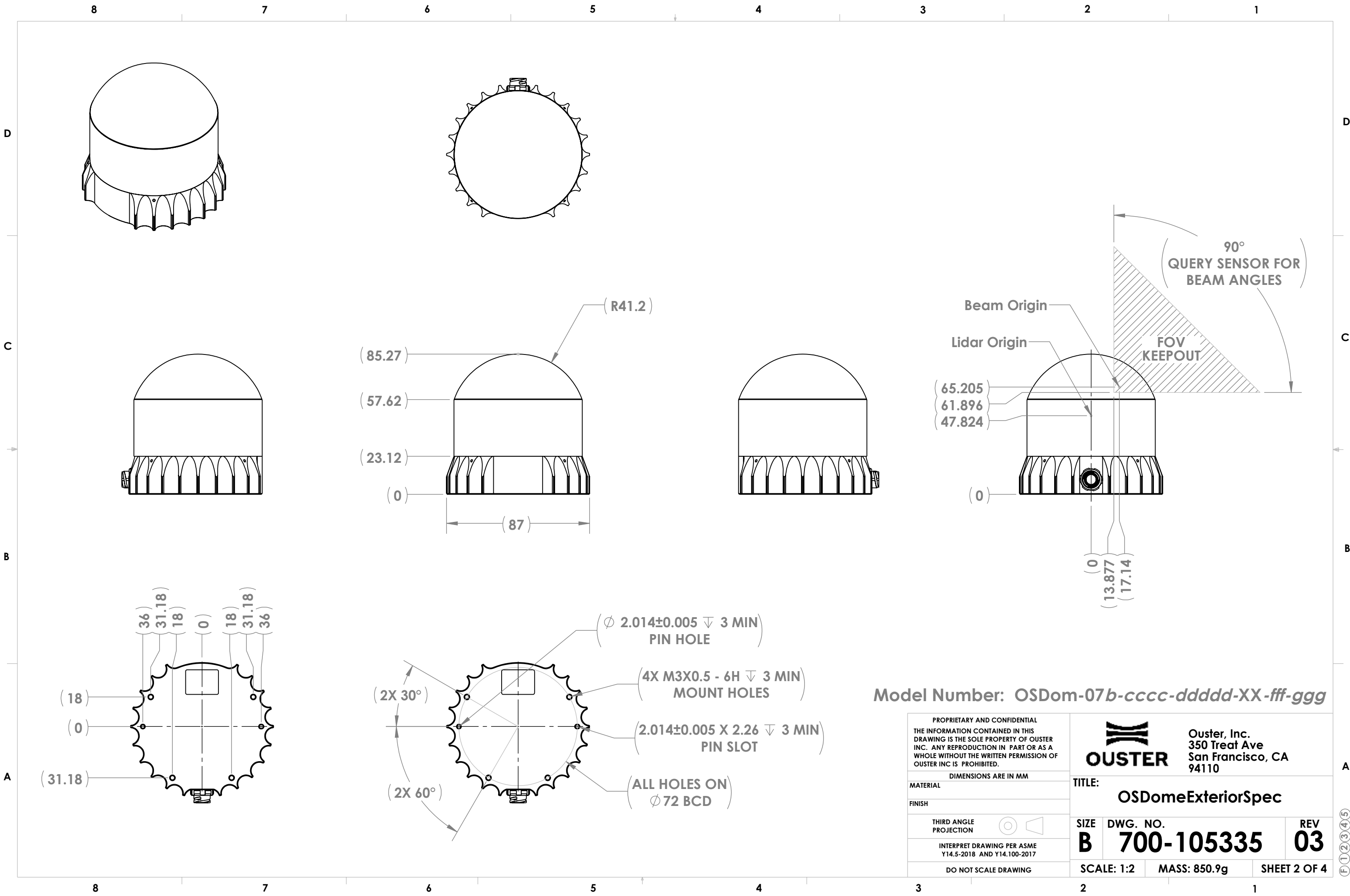
TITLE: OSDomeExteriorSpec

SIZE **B** DWG. NO. **700-105335** REV **03**

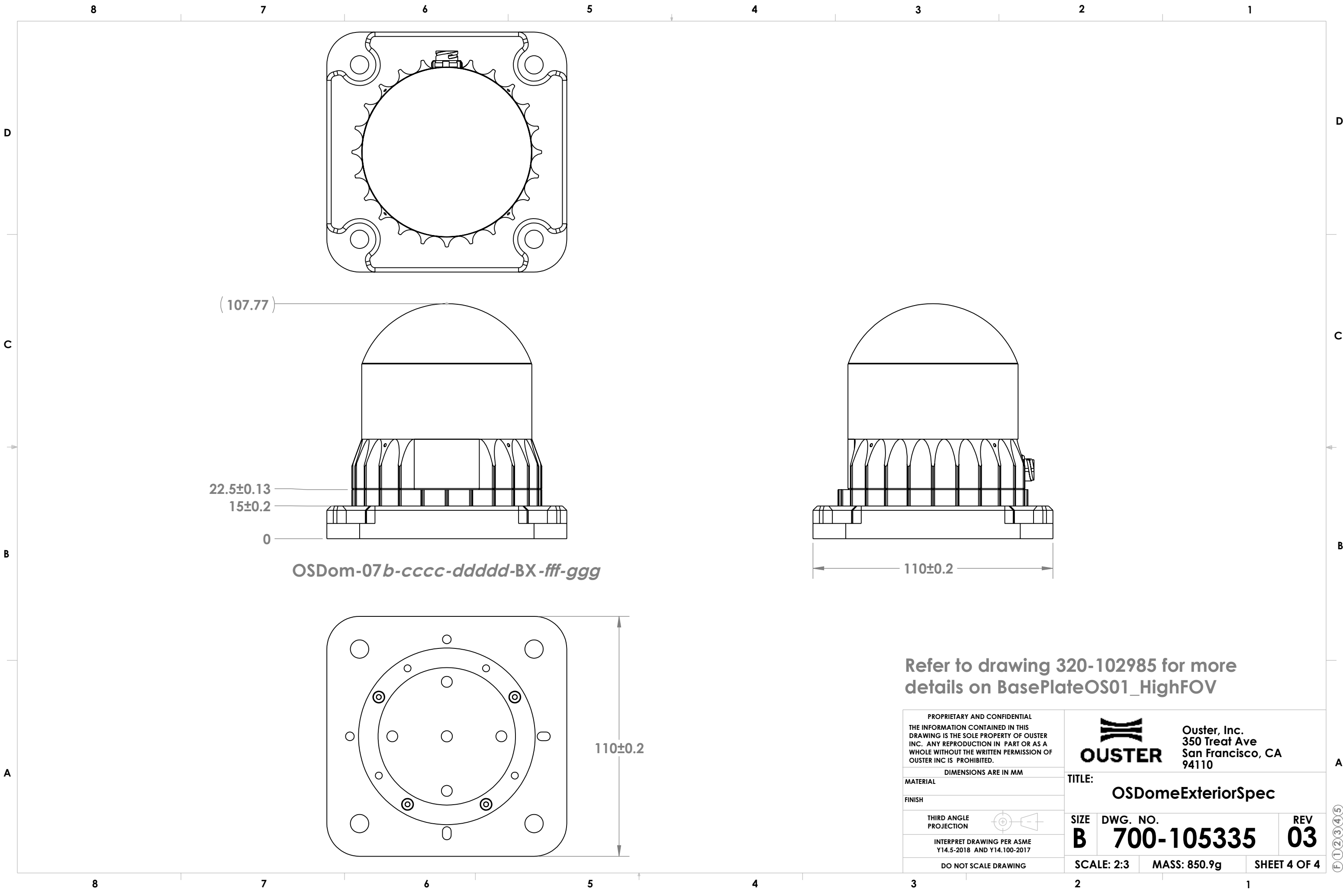
SCALE: 1:1 MASS: 850.9g SHEET 1 OF 4

DO NOT SCALE DRAWING

12345


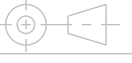






OSDom-07 *b-cccc-ddddd-BX-fff-ggg*

Refer to drawing 320-102985 for more details on BasePlateOS01_HighFOV

PROPRIETARY AND CONFIDENTIAL THE INFORMATION CONTAINED IN THIS DRAWING IS THE SOLE PROPERTY OF OUSTER INC. ANY REPRODUCTION IN PART OR AS A WHOLE WITHOUT THE WRITTEN PERMISSION OF OUSTER INC IS PROHIBITED.		 OUSTER		Ouster, Inc. 350 Treat Ave San Francisco, CA 94110	
DIMENSIONS ARE IN MM		TITLE: OSDomeExteriorSpec			
MATERIAL		SIZE B		DWG. NO. 700-105335	
FINISH		THIRD ANGLE PROJECTION 		REV 03	
INTERPRET DRAWING PER ASME Y14.5-2018 AND Y14.100-2017		SCALE: 2:3		MASS: 850.9g	
DO NOT SCALE DRAWING				SHEET 4 OF 4	

F12345