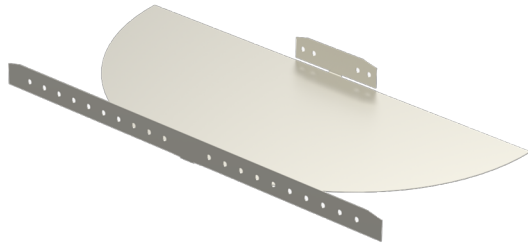


# Adjustable corner piece SRS-40-500 PG

Adjustable corners SRS are used to make 0–75° horizontal angles for cable trays KRA and KRB.



Product name	SRS-40-500 PG		
SKU	1431335		
Material	Steel		
Corrosivity category	C1-C2		
Color	Grey		
Sales unit	PCE		
Packing size	2 PCE		
Dimensions (mm) Width   Height   Length	497	38	1010
Weight (kg/pce)	3,34		
GTIN	6438377009953		
Surface finish	Manufactured of hot-dip galvanized steel in accordance with standard EN 10346		

Dimension A (mm)	497
Dimension B (mm)	1010
Dimension C (mm)	909
Dimension H (mm)	38

