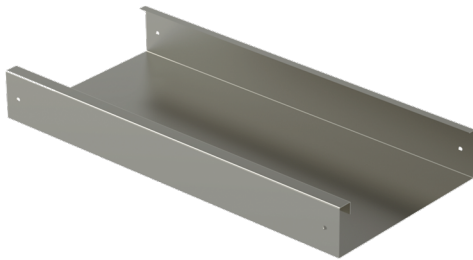


Bottom cover

PPU-200 L=3000 PG

Bottom covers PPU provide visual cover and protect cables from dents from below in cable ladders' straight sections.



Product name	PPU-200 L=3000 PG		
SKU	1432887		
Material	Steel		
Corrosivity category	C1-C2		
Color	Grey		
Sales unit	MTR		
Packing size	1 PCE / 3 MTR		
Dimensions (mm) Width Height Length	208	80	3000
Weight (kg/pce)	9,81		
GTIN	6438377017590		
Surface finish	Manufactured of hot-dip galvanized steel in accordance with standard EN 10346		

Dimension L (mm)	3000
Dimension A (mm)	208

