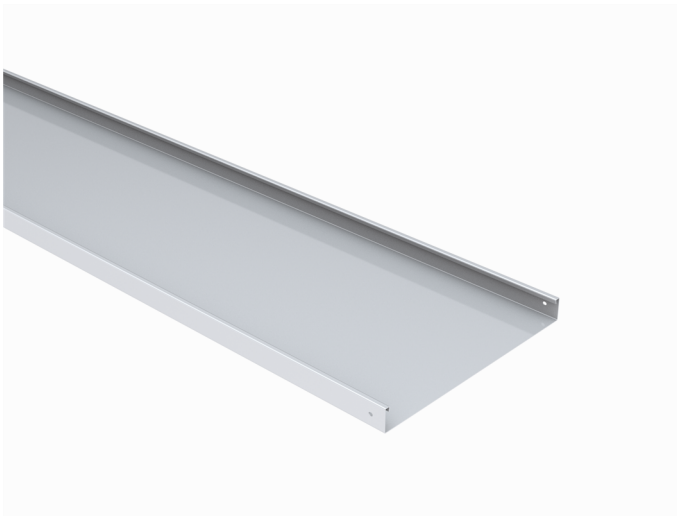


# Cable tray

## KRA-40-400 L=2000 M

Cable trays, non-perforated, are used in places where cables have to be totally invisible and protected underneath. Typically used in office- and commercial buildings, schools, hospitals and shopping centres but also in warehouses, parking halls and industrial buildings.



|  |  |    |      |
|--|--|----|------|
| Product name                               | KRA-40-400 L=2000 M                    |    |      |
| SKU  | 1431224                                |    |      |
| Material                                   | Steel                                  |    |      |
| Corrosivity category                       | C1-C2                                  |    |      |
| Color                                      | White                                  |    |      |
| Sales unit                                 | MTR                                    |    |      |
| Packing size                               | 30 PCE / 60 MTR                        |    |      |
| Dimensions (mm)<br>Width   Height   Length | 400                                    | 40 | 2000 |
| Weight (kg/pce)                            | 9,96                                   |    |      |
| GTIN                                       | 6438377009328                          |    |      |
| Surface finish                             | White RAL 9010 polyester paint coating |    |      |

|                         |      |
|-------------------------|------|
| Dimension L (mm)        | 2000 |
| Dimension A (mm)        | 400  |
| Dimension H (mm)        | 40   |
| Material thickness (mm) | 1,25 |

