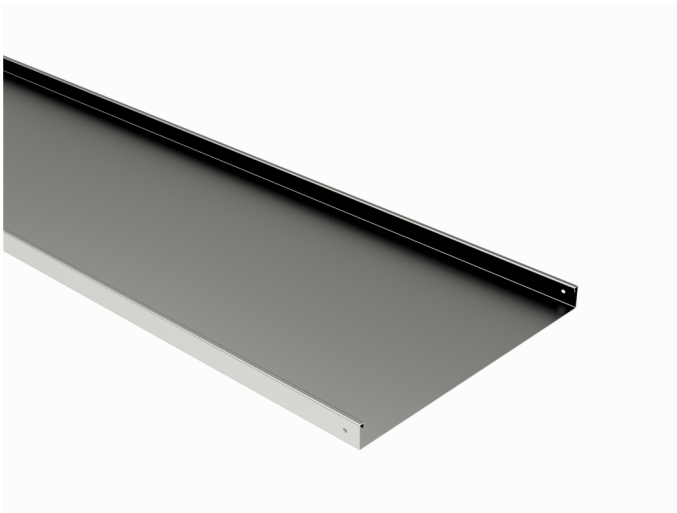


# Cable tray

## KRA-40-500 L=2000 PG

Cable trays, non-perforated, are used in places where cables have to be totally invisible and protected underneath. Typically used in office- and commercial buildings, schools, hospitals and shopping centres but also in warehouses, parking halls and industrial buildings.



|  |   |    |      |
|--|---|----|------|
| Product name                               | KRA-40-500 L=2000 PG  |    |      |
| SKU  | 1431205   |    |      |
| Material                                   | Steel   |    |      |
| Corrosivity category                       | C1-C2   |    |      |
| Color                                      | Grey  |    |      |
| Sales unit                                 | MTR   |    |      |
| Packing size                               | 30 PCE / 60 MTR   |    |      |
| Dimensions (mm)<br>Width   Height   Length | 500   | 40 | 2000 |
| Weight (kg/pce)                            | 11,82   |    |      |
| GTIN                                       | 6438377009212   |    |      |
| Surface finish                             | Manufactured of hot-dip galvanized steel in accordance with standard EN 10346 |    |      |

|                         |      |
|-------------------------|------|
| Dimension L (mm)        | 2000 |
| Dimension A (mm)        | 500  |
| Dimension H (mm)        | 40   |
| Material thickness (mm) | 1,25 |

