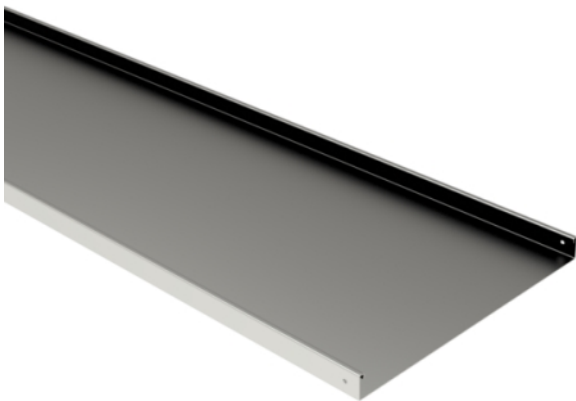


# Cable tray

## KRA-60-500 L=3000 XPG

Cable trays, non-perforated, are used in places where cables have to be totally invisible and protected underneath. KRA-type trays are typically used in office- and commercial buildings, schools, hospitals and shopping centres, but also in warehouses, parking halls and industrial buildings. To extend KRA cable trays joints RSS can be used. Joints RSS-40-100...500 have a special forming that allow to fasten these directly to wall or ceiling supports.



Product name	KRA-60-500 L=3000 XPG		
SKU	1432011		
Material	Steel		
Corrosivity category	C1-C4		
Color	Grey		
Sales unit	MTR		
Packing size	20 PCE / 60 MTR		
Dimensions (mm)			
Width   Height   Length	500	60	3000
Weight (kg/pce)	18,9		
GTIN	6438377128500		
Surface finish	Manufactured of coated steel in accordance with standard EN 10346		

Dimension L (mm)	3000
Dimension A (mm)	500
Dimension H (mm)	60
Material thickness (mm)	1,25

