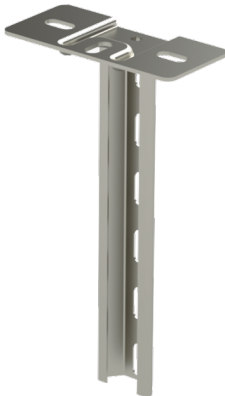


## Ceiling support HST TP1-1500

Ceiling supports TP1 are used to install cable ladders, cable trays and wire mesh trays to ceiling or floor with HK13-type intermediate supports and TPK-type gate supports.



Product name	HST TP1-1500		
SKU	1430194		
Material	Acid-proof steel		
Corrosivity category	C1-CX		
Color	Grey		
Sales unit	PCE		
Packing size	1 PCE		
Dimensions (mm) Width   Height   Length	150	1492	70
Weight (kg/pce)	3,14		
GTIN	6438377005306		
Surface finish	Manufactured of stainless steel in accordance with standard EN 10088		

Dimension A (mm)	1485
Loading capacity (kg)	350