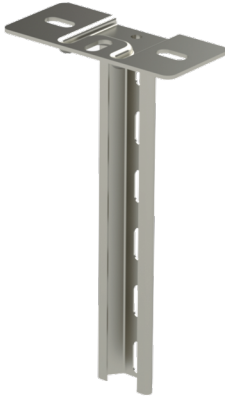


Ceiling support HST TP1-250

Ceiling supports TP1 are used to install cable ladders, cable trays and wire mesh trays to ceiling or floor with HK13-type intermediate supports and TPK-type gate supports.



| | | | |
|--|--|-----|----|
| Product name | HST TP1-250 | | |
| SKU | 1430190 | | |
| Material | Acid-proof steel | | |
| Corrosivity category | C1-CX | | |
| Color | Grey | | |
| Sales unit | PCE | | |
| Packing size | 10 PCE | | |
| Dimensions (mm) Width Height Length | 150 | 273 | 70 |
| Weight (kg/pce) | 0,95 | | |
| GTIN | 6438377005269 | | |
| Surface finish | Manufactured of stainless steel in accordance with standard EN 10088 | | |

| | |
|-----------------------|-----|
| Dimension A (mm) | 270 |
| Loading capacity (kg) | 350 |