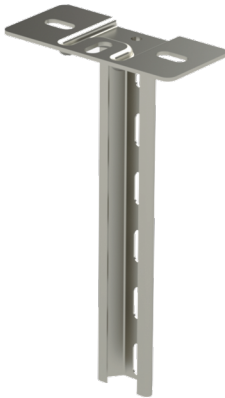


## Ceiling support TP1-1500 HDG

Ceiling supports TP1 are used to install cable ladders, cable trays and wire mesh trays to ceiling or floor with HK13-type intermediate supports and TPK-type gate supports.



Product name	TP1-1500 HDG		
SKU	1449606		
Material	Steel		
Corrosivity category	C1-C4		
Color	Grey		
Sales unit	PCE		
Packing size	1 PCE		
Dimensions (mm) Width   Height   Length	150	1492	70
Weight (kg/pce)	1,73		
GTIN	6438377022235		
Surface finish	Hot-dip galvanized after manufacturing in accordance with standard EN ISO 1461		

Dimension A (mm)	1483
Loading capacity (kg)	350

